



Chipsmall Limited consists of a professional team with an average of over 10 year of expertise in the distribution of electronic components. Based in Hongkong, we have already established firm and mutual-benefit business relationships with customers from,Europe,America and south Asia,supplying obsolete and hard-to-find components to meet their specific needs.

With the principle of “Quality Parts,Customers Priority,Honest Operation,and Considerate Service”,our business mainly focus on the distribution of electronic components. Line cards we deal with include Microchip,ALPS,ROHM,Xilinx,Pulse,ON,Everlight and Freescale. Main products comprise IC,Modules,Potentiometer,IC Socket,Relay,Connector.Our parts cover such applications as commercial,industrial, and automotives areas.

We are looking forward to setting up business relationship with you and hope to provide you with the best service and solution. Let us make a better world for our industry!



## Contact us

Tel: +86-755-8981 8866 Fax: +86-755-8427 6832

Email & Skype: info@chipsmall.com Web: www.chipsmall.com

Address: A1208, Overseas Decoration Building, #122 Zhenhua RD., Futian, Shenzhen, China





# *SAW Components*

*Data Sheet B7809*

Data Sheet

A large, stylized, 3D-rendered graphic of the EPCOS logo. The letters "EPCOS" are rendered in a bold, sans-serif font, appearing to be part of a curved, metallic-looking structure. The background is dark and textured, suggesting a globe or a complex circuit board layout.



**SAW Components**

**B7809**

**Low-Loss Filter for Mobile Communication**

**2441,75 MHz**

**Data Sheet**



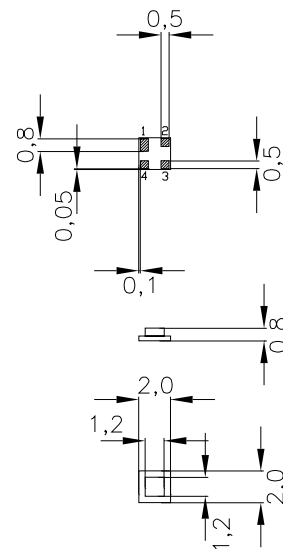
Chip sized SAW package

**Features**

- Low-loss RF filter for Bluetooth
- Low amplitude ripple
- Usable passband 83,5 MHz
- No matching network required for operation at 50 Ω
- Ceramic package for Surface Mounted Technology (SMT)

**Terminals**

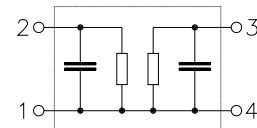
- Gold-plated Ni



Dimensions in mm, approx. weight 0,01 g

**Pin configuration**

- 2                    Input
- 3                    Output
- 1, 4                Ground



Type	Ordering code	Marking and Package according to	Packing according to
B7809	B39242-B7809-A510	C61157-A7-A63	F61074-V8099-Z000

Electrostatic Sensitive Device (ESD)

**Maximum ratings**

Operating temperature range	$T$	- 40/+ 85	°C	source impedance 50 Ω, 2400,0 ... 2483,5 MHz
Storage temperature range	$T_{stg}$	- 40/+ 85	°C	
DC voltage	$V_{DC}$	0	V	
Input Power max.	$P_{IN}$	15,0	dBm	



Data Sheet



Characteristics

Operating Temperature Range:  $T = -40^{\circ}\text{C}$  to  $85^{\circ}\text{C}$   
 Terminating source impedance:  $Z_S = 50\Omega$   
 Terminating load impedance:  $Z_L = 50\Omega$

		min.	typ.	max.	
<b>Center frequency</b>	$f_C$	—	2441,75	—	MHz
<b>Maximum insertion attenuation</b>	$\alpha_{\max}$				
	2400,0 ... 2483,5 MHz	—	2,6	3,5	dB
<b>Amplitude ripple</b>	$\Delta\alpha$				
	2400,0 ... 2483,5 MHz	—	1,2	2,2	dB
	2400,0 ... 2483,5 MHz *)	—	1,2	2,0	dB
<b>Attenuation</b>	$\alpha$				
	0,00 ... 1785,00 MHz	15	17	—	dB
	1785,00 ... 1850,00 MHz	20	24	—	dB
	1850,00 ... 1950,00 MHz	22	26	—	dB
	1950,00 ... 2170,00 MHz	24	29	—	dB
	2170,00 ... 2250,00 MHz	20	24	—	dB
	2250,00 ... 2300,00 MHz	18	20	—	dB
	2600,00 ... 3000,00 MHz	20	25	—	dB
	3000,00 ... 4000,00 MHz	15	18	—	dB
	4000,00 ... 5000,00 MHz	12	15	—	dB

\*)  $T = -30^{\circ}\text{C}$  to  $85^{\circ}\text{C}$



SAW Components

B7809

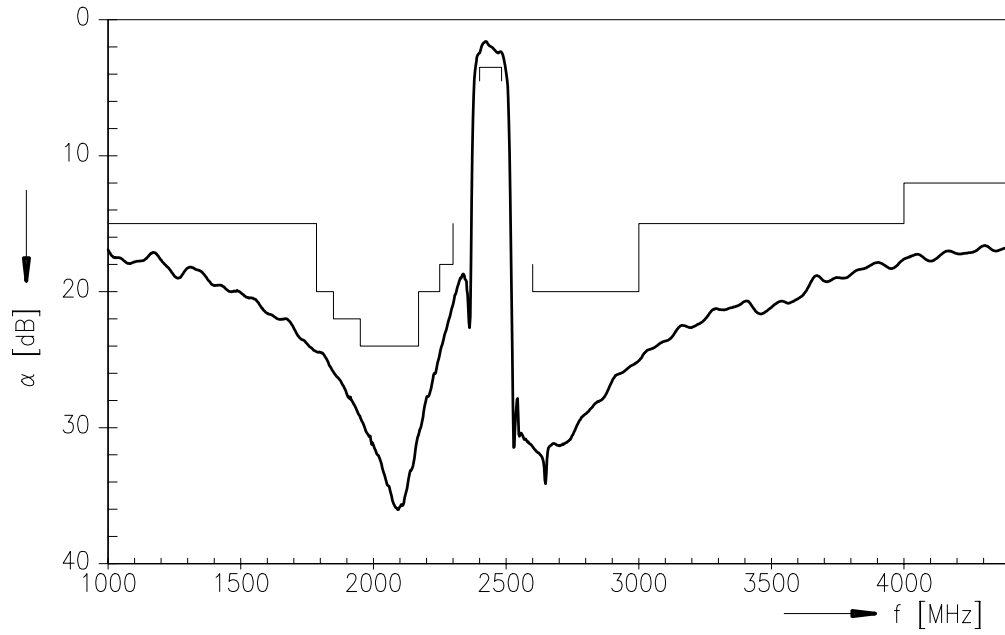
Low-Loss Filter for Mobile Communication

2441,75 MHz

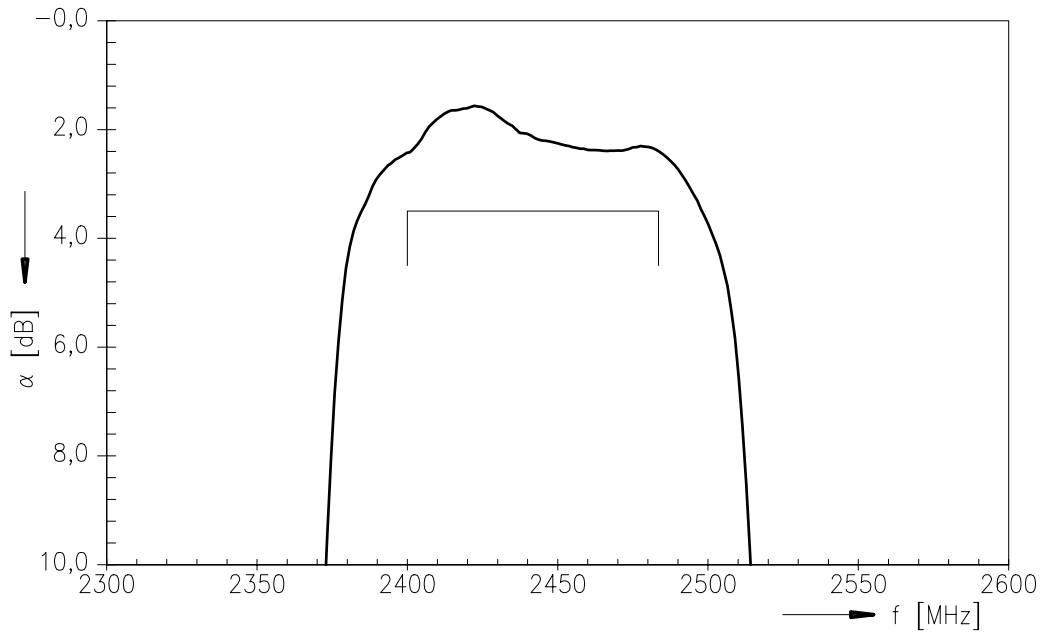
Data Sheet



Transfer function



Transfer function (passband)





**SAW Components**

**B7809**

**Low-Loss Filter for Mobile Communication**

**2441,75 MHz**

Data Sheet



**Published by EPCOS AG**

**SAW MC WT, P.O. Box 80 17 09, 81617 Munich, GERMANY**

**TEL +49 89 636 09, FAX +49 89 636-2 26 89**

© EPCOS AG 2002. Reproduction, publication and dissemination of this brochure and the information contained therein without EPCOS' prior express consent is prohibited.

Purchase orders are subject to the General Conditions for the Supply of Products and Services of the Electrical and Electronics Industry recommended by the ZVEI (German Electrical and Electronic Manufacturers' Association), unless otherwise agreed.

This brochure replaces the previous edition.

For questions on technology, prices and delivery please contact the Sales Offices of EPCOS AG or the international Representatives.

Due to technical requirements components may contain dangerous substances. For information on the type in question please also contact one of our Sales Offices.