



Chipsmall Limited consists of a professional team with an average of over 10 year of expertise in the distribution of electronic components. Based in Hongkong, we have already established firm and mutual-benefit business relationships with customers from,Europe,America and south Asia,supplying obsolete and hard-to-find components to meet their specific needs.

With the principle of "Quality Parts,Customers Priority,Honest Operation,and Considerate Service",our business mainly focus on the distribution of electronic components. Line cards we deal with include Microchip,ALPS,ROHM,Xilinx,Pulse,ON,Everlight and Freescale. Main products comprise IC,Modules,Potentiometer,IC Socket,Relay,Connector.Our parts cover such applications as commercial,industrial, and automotives areas.

We are looking forward to setting up business relationship with you and hope to provide you with the best service and solution. Let us make a better world for our industry!



Contact us

Tel: +86-755-8981 8866 Fax: +86-755-8427 6832

Email & Skype: info@chipsmall.com Web: www.chipsmall.com

Address: A1208, Overseas Decoration Building, #122 Zhenhua RD., Futian, Shenzhen, China





SAW Filters for Mobile Communications

Series/Type: **B7841**

The following products presented in this data sheet are being withdrawn.

Ordering Code	Substitute Product	Date of Withdrawal	Deadline Last Orders	Last Shipments
B39242B7841C710		2009-12-18	2010-06-30	2010-09-30

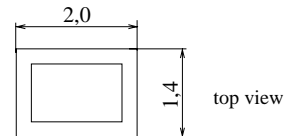
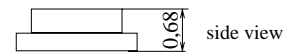
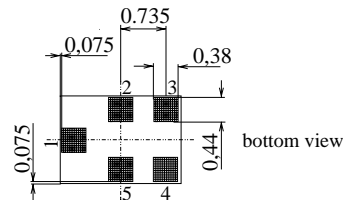
For further information please contact your nearest EPCOS sales office, which will also support you in selecting a suitable substitute. The addresses of our worldwide sales network are presented at www.epcos.com/sales.



Chip Sized Saw Package

Features

- Low-loss RF filter for bluetooth
- Usable passband 83,5 MHz
- Unbalanced to unbalanced operation
- Package for **Surface Mounted Technology (SMT)**

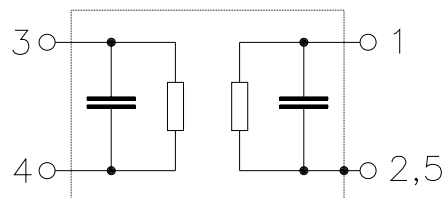

Terminals

- Ni, gold-plated

Dimensions in mm, approx. weight 0,007g

Pin configuration

- | | |
|-----|--------------------|
| 1 | Input, unbalanced |
| 4 | Output, unbalanced |
| 2,5 | Case ground |
| 3 | to be grounded |



Type	Ordering code	Marking and Package according to	Packing according to
B7841	B39242-B7841-C710	C61157-A7-A82	F61074-V8151-Z000

Electrostatic Sensitive Device (ESD)
Maximum ratings

Operable temperature range	T	- 40 /+ 85	°C	Machine Model, 10 pulses
Storage temperature range	T_{stg}	- 40 /+ 85	°C	
DC voltage	V_{DC}	3	V	
ESD voltage	V_{ESD}	50*	V	
Input power max. 2400...2483,5 MHz	P_{IN}	6	dBm	source/load impedance 50Ω
824...915, 1710...1980 MHz		15		

* - acc. to JESD22-A115A (Machine Model), 10 negative & 10 positive pulses


Characteristics

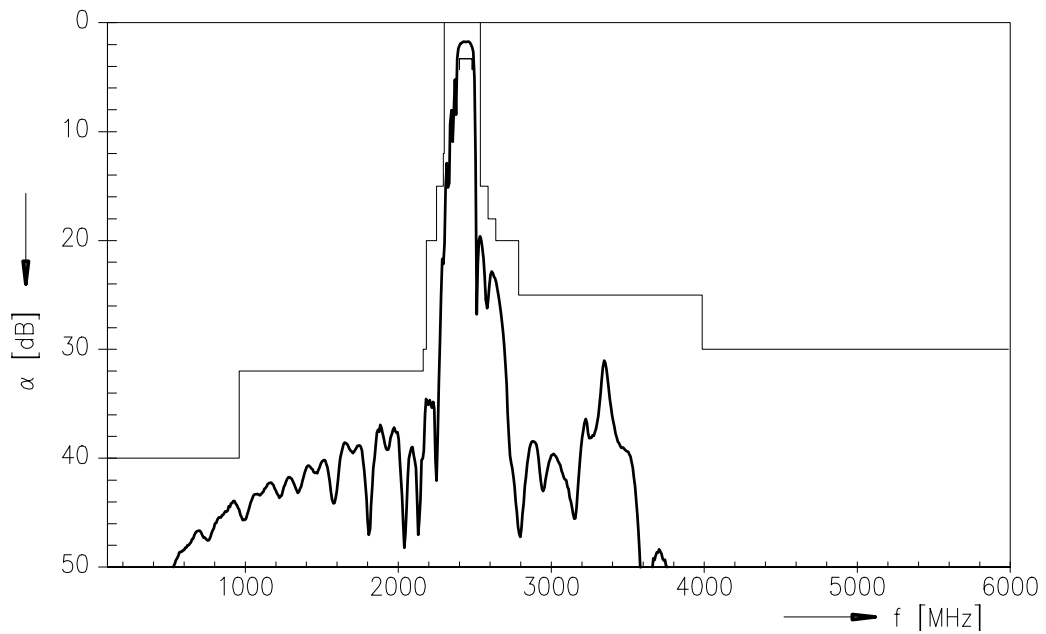
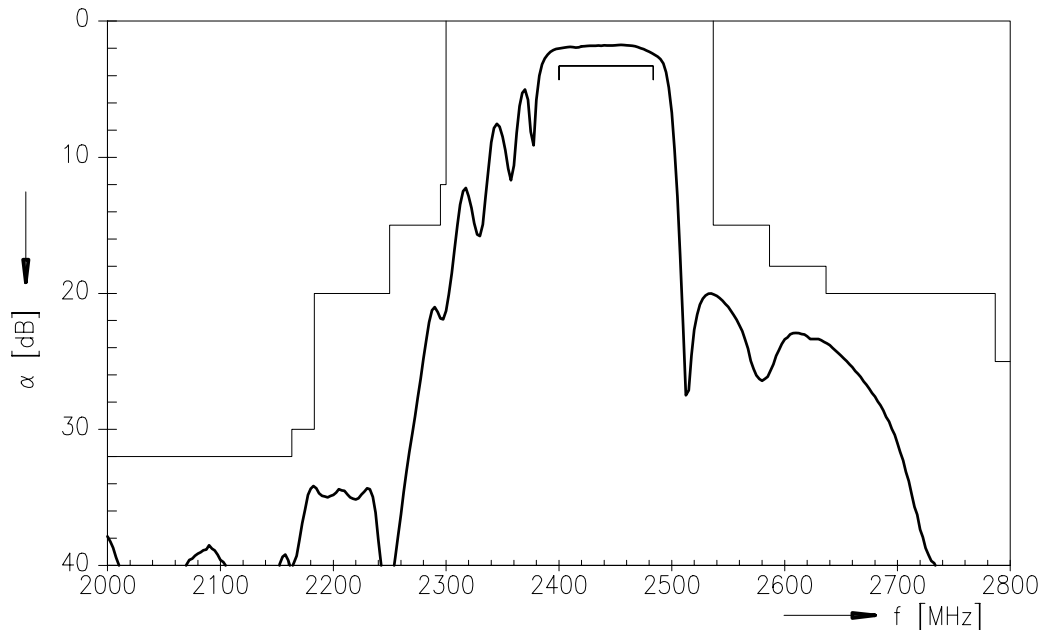
Operating temperature range:	$T = -40$ to $+85$ °C
Terminating source impedance:	$Z_S = 50 \Omega - 1,5$ nH (serial)
Terminating load impedance:	$Z_L = 50 \Omega - 2,5$ nH (serial)

		min.	typ.	max.	
Center frequency	f_c	—	2441,75	—	MHz
Maximum insertion attenuation	α_{max}				
	2400,0 ... 2483,5 MHz	—	2,2	3,3	dB
Return loss					
	2400,0 ... 2483,5 MHz*)	9,0	11,5	—	dB
Amplitude ripple (p-p)	$\Delta\alpha$				
	2400,0 ... 2483,5 MHz	—	0,5	1,5	dB
Attenuation	α				
	100,0 ... 960,0 MHz	40	44	—	dB
	960,0 ... 2150,0 MHz	32	38	—	dB
	2150,0 ... 2170,0 MHz	30	36	—	dB
	2170,0 ... 2250,0 MHz	20	35	—	dB
	2250,0 ... 2295,0 MHz	15	21	—	dB
	2295,0 ... 2300,0 MHz	12	20	—	dB
	2550,0 ... 2600,0 MHz	15	20	—	dB
	2600,0 ... 2650,0 MHz	18	23	—	dB
	2650,0 ... 2800,0 MHz	20	24	—	dB
	2800,0 ... 4000,0 MHz	25	30	—	dB
	4000,0 ... 6000,0 MHz	30	50	—	dB

 *) $T = +25$ °C



Transfer function



**Published by EPCOS AG****SAW MC WT, P.O. Box 80 17 09, 81617 Munich, GERMANY****TEL +49 89 636 09, FAX +49 89 636 2 26 89**

© EPCOS AG 2004. Reproduction, publication and dissemination of this brochure and the information contained therein without EPCOS' prior express consent is prohibited.

Purchase orders are subject to the General Conditions for the Supply of Products and Services of the Electrical and Electronics Industry recommended by the ZVEI (German Electrical and Electronic Manufacturers' Association), unless otherwise agreed.

This brochure replaces the previous edition.

For questions on technology, prices and delivery please contact the Sales Offices of EPCOS AG or the international Representatives.

Due to technical requirements components may contain dangerous substances. For information on the type in question please also contact one of our Sales Offices.