



Chipsmall Limited consists of a professional team with an average of over 10 year of expertise in the distribution of electronic components. Based in Hongkong, we have already established firm and mutual-benefit business relationships with customers from,Europe,America and south Asia,supplying obsolete and hard-to-find components to meet their specific needs.

With the principle of “Quality Parts,Customers Priority,Honest Operation,and Considerate Service”,our business mainly focus on the distribution of electronic components. Line cards we deal with include Microchip,ALPS,ROHM,Xilinx,Pulse,ON,Everlight and Freescale. Main products comprise IC,Modules,Potentiometer,IC Socket,Relay,Connector.Our parts cover such applications as commercial,industrial, and automotives areas.

We are looking forward to setting up business relationship with you and hope to provide you with the best service and solution. Let us make a better world for our industry!



## Contact us

Tel: +86-755-8981 8866 Fax: +86-755-8427 6832

Email & Skype: info@chipsmall.com Web: www.chipsmall.com

Address: A1208, Overseas Decoration Building, #122 Zhenhua RD., Futian, Shenzhen, China





# SAW Filters for Infrastructure Systems

## Series/Type: **B3662**

The following products presented in this data sheet are being withdrawn.

Ordering Code	Substitute Product	Date of Withdrawal	Deadline Last Orders	Last Shipments
B39331B3662Z510		2008-02-07	2008-07-31	2008-10-31

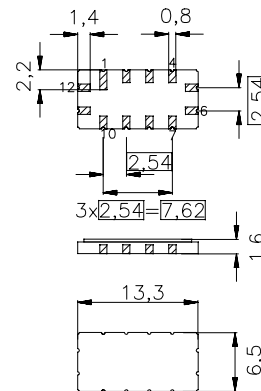
For further information please contact your nearest EPCOS sales office, which will also support you in selecting a suitable substitute. The addresses of our worldwide sales network are presented at [www.epcos.com/sales](http://www.epcos.com/sales).

**SAW Components**
**B3662**
**Low-Loss Filter**
**333,0 MHz**
**Data Sheet**
**Features**

- IF filter for WLL
- Ceramic SMD package
- Low insertion attenuation

 Ceramic package **QCC12**
**Terminals**

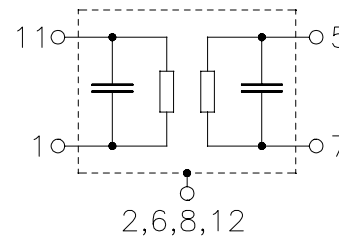
- Gold plated



Dimens. in mm, approx. weight 0,4 g

**Pin configuration**

11	Input
5	Output
1	Input ground
7	Output ground
3, 4, 9, 10	Ground
2, 6, 8, 12	Case ground



Type	Ordering code	Marking and Package according to	Packing according to
B3662	B39331-B3662-Z510	C61157-A7-A55	F61074-V8026-Z000

**Electrostatic Sensitive Device (ESD)**
**Maximum ratings**

Operable temperature range	$T_A$	-40 / +85	°C
Storage temperature range	$T_{stg}$	-45 / +85	°C
DC voltage	$V_{DC}$	0	V
Source power	$P_s$	10	dBm

**SAW Components**
**B3662**
**Low-Loss Filter**
**333,0 MHz**
**Data Sheet**
**Characteristics**

Operating temperature:

$T_A = -45 \dots +85 \text{ }^\circ\text{C}$

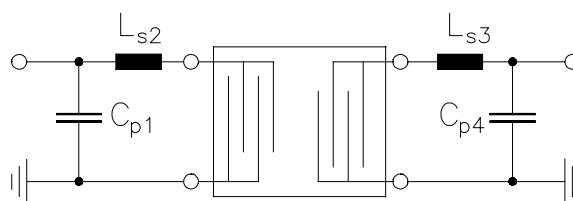
Terminating source impedance:

$Z_S = 50 \text{ } \Omega \text{ and matching network}$

Terminating load impedance:

$Z_L = 50 \text{ } \Omega \text{ and matching network}$

		<b>min.</b>	<b>typ.</b>	<b>max.</b>	
<b>Center frequency</b>	$f_C$	332,88	333,04	333,12	MHz
<b>Minimum insertion attenuation</b>	$\alpha_{\min}$	—	7,5	9,0	dB
<b>Passband width</b>					
$\alpha_{\text{rel}} \leq 3,0 \text{ dB}$	$B_{3,0\text{dB}}$	0,62	0,66	—	MHz
$\alpha_{\text{rel}} \leq 20,0 \text{ dB}$	$B_{20\text{dB}}$	—	1,42	1,5	MHz
$\alpha_{\text{rel}} \leq 30,0 \text{ dB}$	$B_{30\text{dB}}$	—	1,65	1,7	MHz
$\alpha_{\text{rel}} \leq 40,0 \text{ dB}$	$B_{40\text{dB}}$	—	1,83	1,9	MHz
$\alpha_{\text{rel}} \leq 50,0 \text{ dB}$	$B_{50\text{dB}}$	—	5,0	6,0	MHz
<b>Group delay ripple (p-p)</b>	$\Delta\tau$				
332,72 ... 333,25 MHz		—	400	500	ns
332,69 ... 333,31 MHz		—	400	650	ns
<b>Triple Transit Suppression</b>		30	31	—	dB

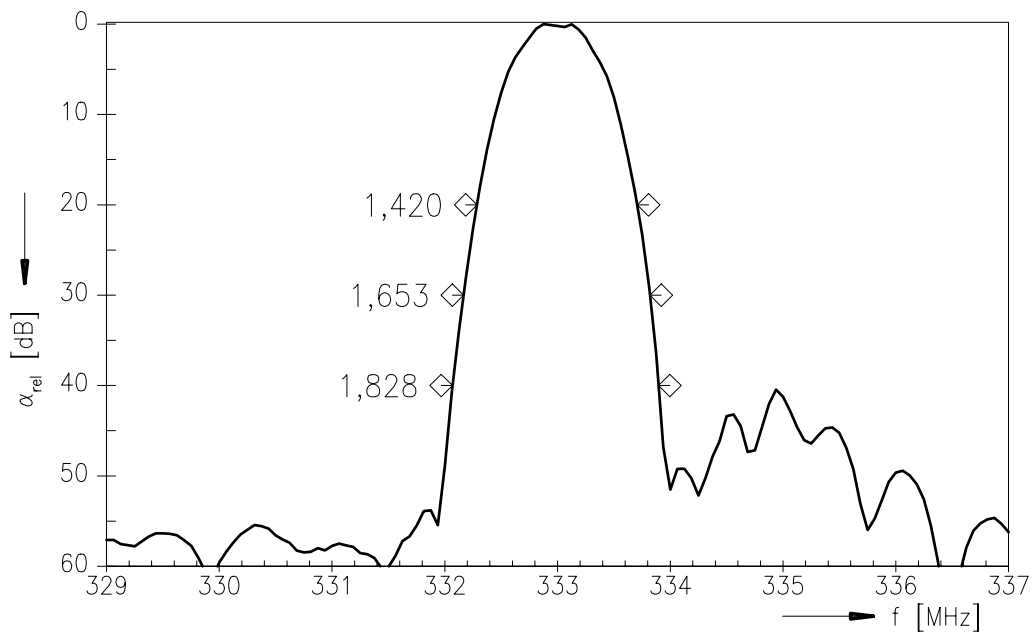
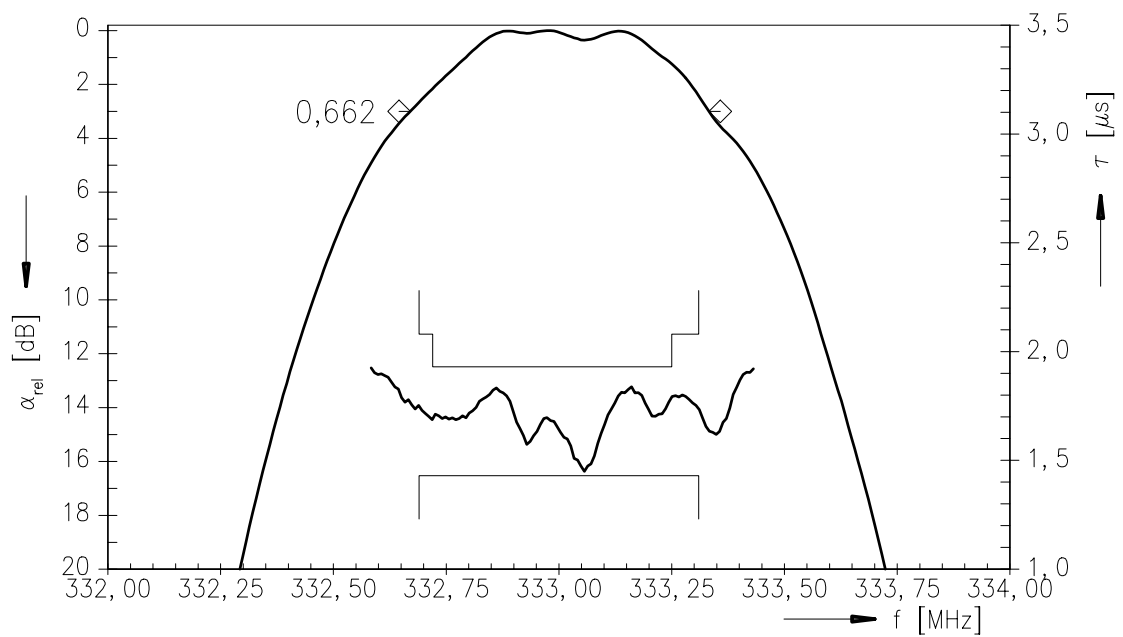
**Data Sheet**
**Matching network** (element values may depend on pcb layout)


$$C_{p1} = 15 \text{ pF}$$

$$L_{s2} = 18 \text{ nH}$$

$$L_{s3} = 12 \text{ nH}$$

$$C_{p4} = 18 \text{ pF}$$

**Data Sheet**
**Transfer function:**

**Transfer function (pass band):**


**Published by EPCOS AG**  
**Surface Acoustic Wave Components Division, OFW E NK**  
**P.O. Box 80 17 09, D-81617 München**

© EPCOS AG 1999. All Rights Reserved.

As far as patents or other rights of third parties are concerned, liability is only assumed for components per se, not for applications, processes and circuits implemented within components or assemblies.

The information describes the type of component and shall not be considered as assured characteristics.

Terms of delivery and rights to change design reserved.

For questions on technology, prices and delivery please contact the sales offices of EPCOS AG or the international representatives.

Due to technical requirements components may contain dangerous substances. For information on the type in question please also contact one of our sales offices.