



Chipsmall Limited consists of a professional team with an average of over 10 year of expertise in the distribution of electronic components. Based in Hongkong, we have already established firm and mutual-benefit business relationships with customers from,Europe,America and south Asia,supplying obsolete and hard-to-find components to meet their specific needs.

With the principle of “Quality Parts,Customers Priority,Honest Operation,and Considerate Service”,our business mainly focus on the distribution of electronic components. Line cards we deal with include Microchip,ALPS,ROHM,Xilinx,Pulse,ON,Everlight and Freescale. Main products comprise IC,Modules,Potentiometer,IC Socket,Relay,Connector.Our parts cover such applications as commercial,industrial, and automotives areas.

We are looking forward to setting up business relationship with you and hope to provide you with the best service and solution. Let us make a better world for our industry!



Contact us

Tel: +86-755-8981 8866 Fax: +86-755-8427 6832

Email & Skype: info@chipsmall.com Web: www.chipsmall.com

Address: A1208, Overseas Decoration Building, #122 Zhenhua RD., Futian, Shenzhen, China





SAW Components

Data Sheet G 1962 M

Data Sheet

A large, stylized, 3D-rendered version of the EPCOS logo, featuring the word "EPCOS" in a bold, sans-serif font, set against a dark, textured background with a glowing effect.



SAW Components

G 1962 M

IF Filter for Intercarrier Applications

38,90 MHz

Data Sheet

Standard

Plastic package **SIP5K**

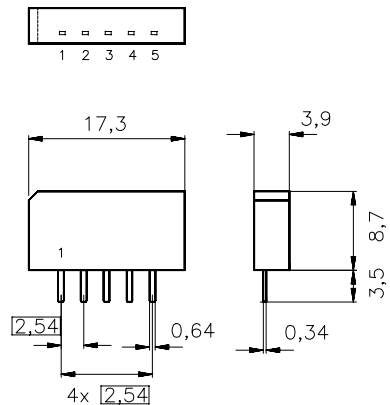
- B/G

Features

- TV IF filter with Nyquist slope and sound shelf
- Reduced group delay predistortion as compared with standard B/G, half
- Suitable for CENELEC EN 55020

Terminals

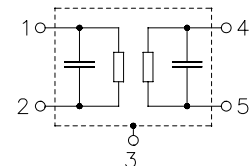
- Tinned CuFe alloy



Dimensions in mm, approx. weight 1,0 g

Pin configuration

- 1 Input
- 2 Input - ground
- 3 Chip carrier - ground
- 4 Output
- 5 Output



| Type | Ordering code | Marking and package according to | Packing according to |
|----------|-------------------|----------------------------------|----------------------|
| G 1962 M | B39389-G1962-M100 | C61157-A1-A15 | F61074-V8067-Z000 |

Maximum ratings

| | | | | |
|----------------------------|-----------|---------|----|-----------------------|
| Operable temperature range | T_A | -25/+65 | °C | |
| Storage temperature range | T_{stg} | -40/+85 | °C | |
| DC voltage | V_{DC} | 5 | V | between any terminals |
| AC voltage | V_{pp} | 10 | V | between any terminals |


SAW Components
G 1962 M
IF Filter for Intercarrier Applications
38,90 MHz
Data Sheet
Characteristics

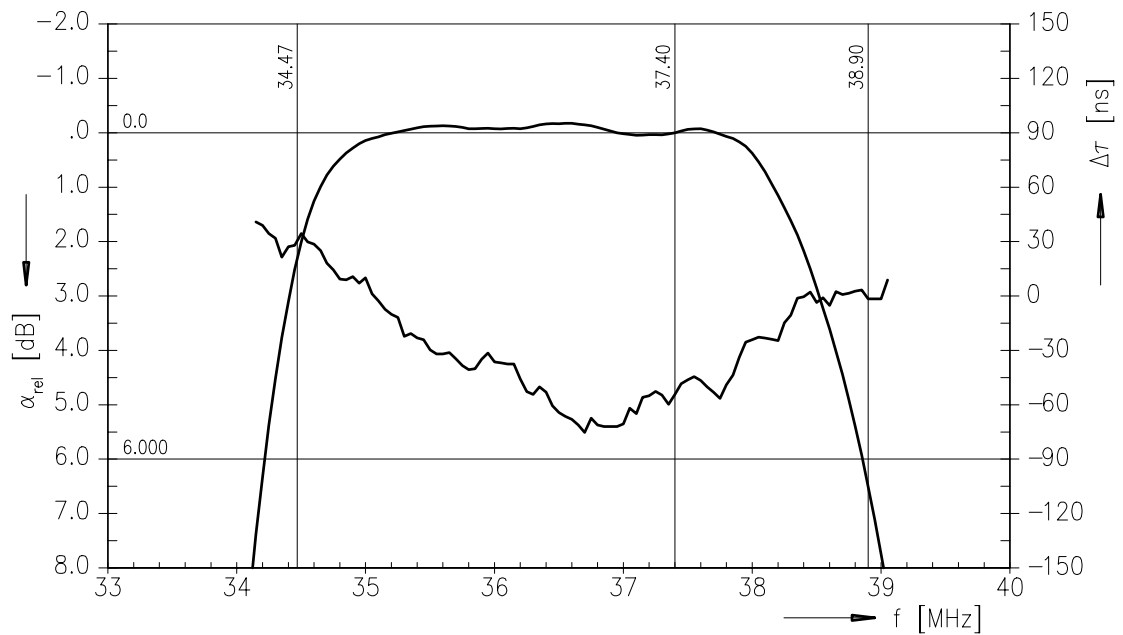
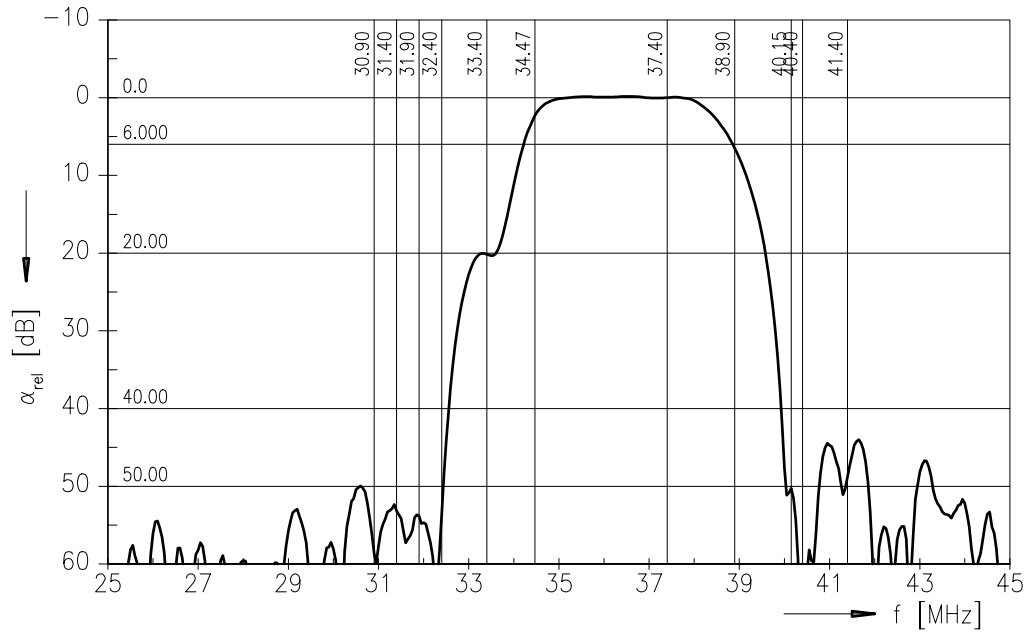
Reference temperature: $T_A = 25\text{ °C}$
 Terminating source impedance: $Z_S = 50\ \Omega$
 Terminating load impedance: $Z_L = 2\text{ k}\Omega \parallel 3\text{ pF}$

| | | min. | typ. | max. | |
|--|---------------------------------------|------|----------------------|------|---------------------------|
| Insertion attenuation | | | | | |
| | α | | | | |
| Reference level for the following data | 37,40 MHz | 13,6 | 15,1 | 16,6 | dB |
| Relative attenuation | | | | | |
| | α_{rel} | | | | |
| Picture carrier | 38,90 MHz | 4,9 | 5,9 | 6,9 | dB |
| Color carrier | 34,47 MHz | 1,3 | 2,3 | 3,3 | dB |
| Sound carrier | 33,40 MHz | 18,9 | 19,9 | 20,9 | dB |
| Adjacent picture carrier UHF | 30,90 MHz | 46,0 | 52,0 | — | dB |
| VHF | 31,90 MHz | 48,0 | 54,0 | — | dB |
| | 31,40 MHz | 46,0 | 52,0 | — | dB |
| | 32,40 MHz | 48,0 | 56,0 | — | dB |
| | 40,15 MHz | 42,0 | 49,0 | — | dB |
| Adjacent sound carrier VHF | 40,40 MHz | 46,0 | 58,0 | — | dB |
| UHF | 41,40 MHz | 42,0 | 52,0 | — | dB |
| Lower sidelobe | 25,00 ... 31,40 MHz | 42,0 | 47,0 | — | dB |
| Upper sidelobe | 40,40 ... 45,00 MHz | 38,0 | 43,0 | — | dB |
| Reflected wave signal suppression | | | | | |
| 1,3 μ s ... 6,0 μ s after main pulse (test pulse 250 ns, carrier frequency 37,40 MHz) | | 44,0 | 54,0 | — | dB |
| Feedthrough signal suppression | | | | | |
| 1,3 μ s ... 1,2 μ s before main pulse (test pulse 250 ns, carrier frequency 37,40 MHz) | | 50,0 | 56,0 | — | dB |
| Group delay predistortion | | | | | |
| (reference frequency 38,90 MHz) | | | | | |
| | $\Delta\tau$ | | | | |
| | 36,90 MHz | — | -70 | — | ns |
| | 34,47 MHz | — | 30 | — | ns |
| Impedance at 37,40 MHz | | | | | |
| Input: | $Z_{IN} = R_{IN} \parallel C_{IN}$ | — | 2,2 \parallel 13,3 | — | k Ω \parallel pF |
| Output: | $Z_{OUT} = R_{OUT} \parallel C_{OUT}$ | — | 1,4 \parallel 4,7 | — | k Ω \parallel pF |
| Temperature coefficient of frequency | | | | | |
| | TC_f | — | -72 | — | ppm/K |



Data Sheet

Frequency response





SAW Components

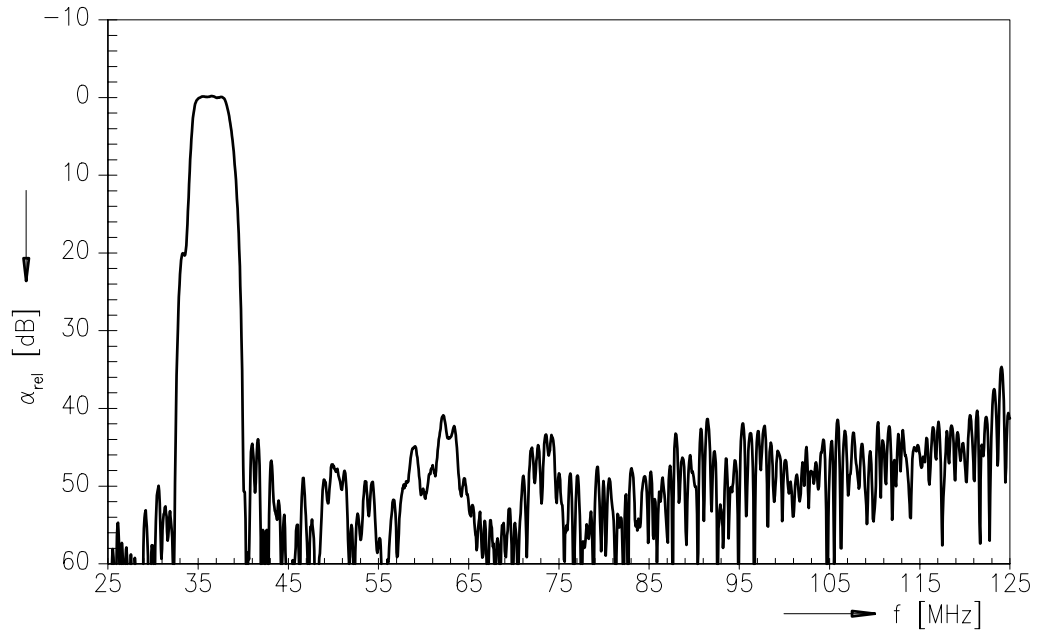
G 1962 M

IF Filter for Intercarrier Applications

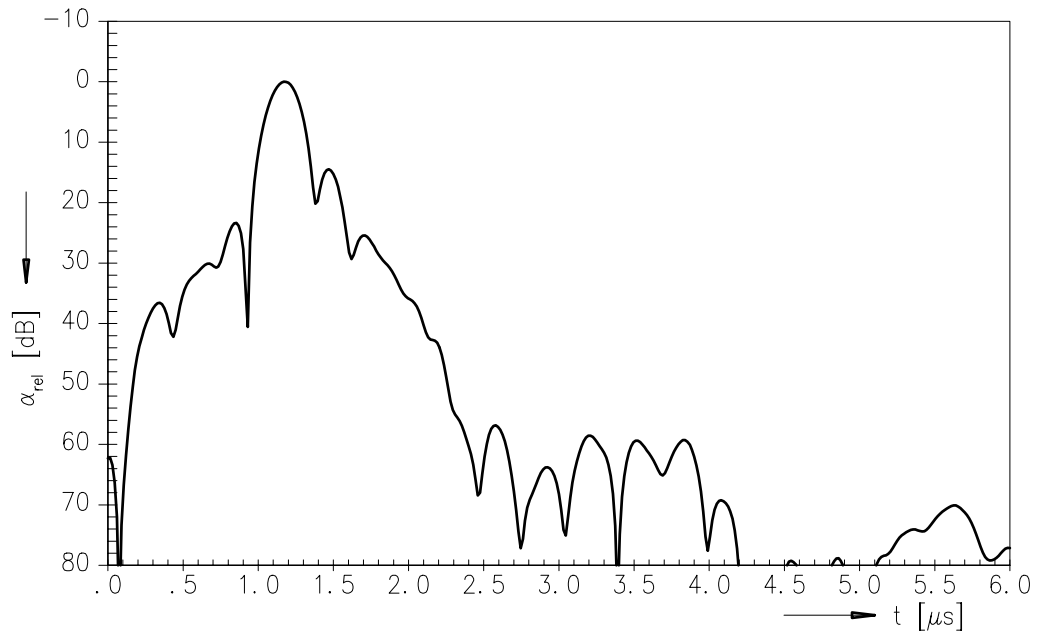
38,90 MHz

Data Sheet

Frequency response



Time domain response





SAW Components

G 1962 M

IF Filter for Intercarrier Applications

38,90 MHz

Data Sheet

Published by EPCOS AG

Surface Acoustic Wave Components Division, SAW CE MM PD

P.O. Box 80 17 09, D-81617 München

© EPCOS AG 2001. All Rights Reserved.

As far as patents or other rights of third parties are concerned, liability is only assumed for components per se, not for applications, processes and circuits implemented within components or assemblies.

The information describes the type of component and shall not be considered as assured characteristics.

Terms of delivery and rights to change design reserved.

For questions on technology, prices and delivery please contact the sales offices of EPCOS AG or the international representatives.

Due to technical requirements components may contain dangerous substances. For information on the type in question please also contact one of our sales offices.