



Chipsmall Limited consists of a professional team with an average of over 10 year of expertise in the distribution of electronic components. Based in Hongkong, we have already established firm and mutual-benefit business relationships with customers from,Europe,America and south Asia,supplying obsolete and hard-to-find components to meet their specific needs.

With the principle of “Quality Parts,Customers Priority,Honest Operation,and Considerate Service”,our business mainly focus on the distribution of electronic components. Line cards we deal with include Microchip,ALPS,ROHM,Xilinx,Pulse,ON,Everlight and Freescale. Main products comprise IC,Modules,Potentiometer,IC Socket,Relay,Connector.Our parts cover such applications as commercial,industrial, and automotives areas.

We are looking forward to setting up business relationship with you and hope to provide you with the best service and solution. Let us make a better world for our industry!



## Contact us

Tel: +86-755-8981 8866 Fax: +86-755-8427 6832

Email & Skype: info@chipsmall.com Web: www.chipsmall.com

Address: A1208, Overseas Decoration Building, #122 Zhenhua RD., Futian, Shenzhen, China





# *SAW Components*

*Data Sheet G 3962 M*

Data Sheet

A large, stylized, 3D-rendered graphic of the word "EPCOS" in white, set against a dark, textured background. The letters are thick and have a slight shadow, giving them a three-dimensional appearance. The background features a faint, circular pattern that resembles a globe or a complex circuit board layout.

EPCOS



**SAW Components**

**G 3962 M**

**IF Filter for Video Applications**

**38,90 MHz**

**Data Sheet**

**Standard**

Plastic package **SIP5K**

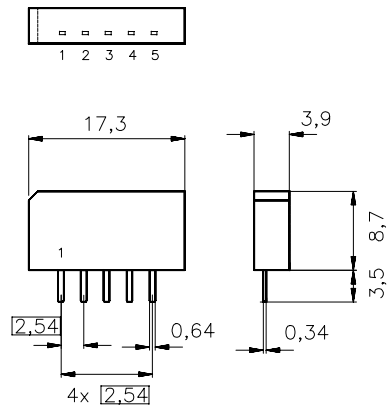
- B/G

**Features**

- TV IF filter with Nyquist slope and sound suppression
- Reduced group delay predistortion as compared with standard B/G, half
- Suitable for CENELEC EN 55020

**Terminals**

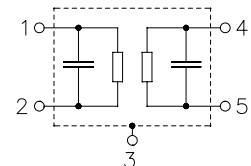
- Tinned CuFe alloy



Dimensions in mm, approx. weight 1,0 g

**Pin configuration**

- 1 Input
- 2 Input - ground
- 3 Chip carrier - ground
- 4 Output
- 5 Output



Type	Ordering code	Marking and package according to	Packing according to
G 3962 M	B39389-G3962-M100	C61157-A1-A15	F61074-V8067-Z000

**Maximum ratings**

Operable temperature range	$T_A$	-25/+65	°C	
Storage temperature range	$T_{stg}$	-40/+85	°C	
DC voltage	$V_{DC}$	12	V	between any terminals
AC voltage	$V_{pp}$	10	V	between any terminals



**SAW Components**

**G 3962 M**

**IF Filter for Video Applications**

**38,90 MHz**

**Data Sheet**

**Characteristics**

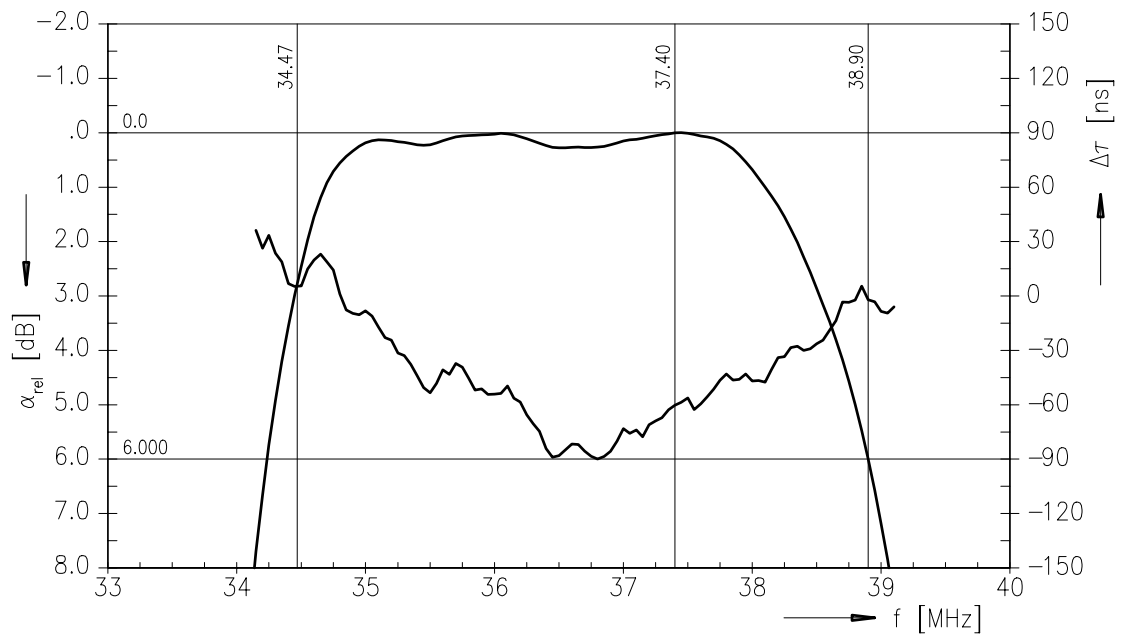
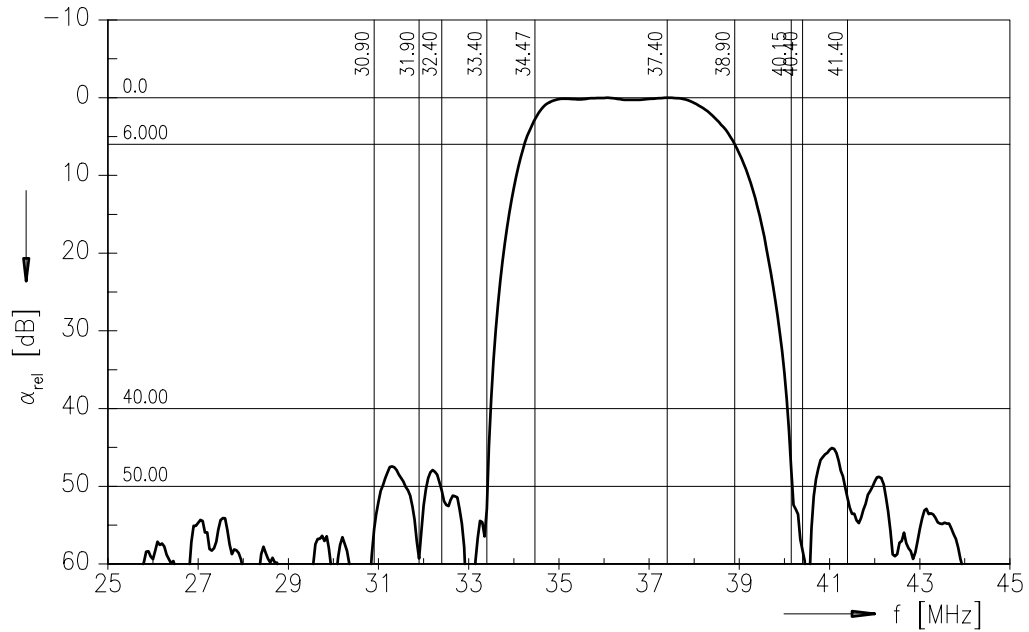
Reference temperature:  $T_A = 25\text{ °C}$   
 Terminating source impedance:  $Z_S = 50\ \Omega$   
 Terminating load impedance:  $Z_L = 2\text{ k}\Omega \parallel 3\text{ pF}$

		<b>min.</b>	<b>typ.</b>	<b>max.</b>	
<b>Insertion attenuation</b>					
	$\alpha$				
Reference level for the following data	37,40 MHz	12,0	13,5	15,0	dB
<b>Relative attenuation</b>					
	$\alpha_{rel}$				
Picture carrier	38,90 MHz	4,6	5,6	6,6	dB
Color carrier	34,47 MHz	2,0	3,0	4,0	dB
Sound carrier	33,40 MHz	42,0	54,0	—	dB
Adjacent picture carrier UHF	30,90 MHz	46,0	55,0	—	dB
VHF	31,90 MHz	48,0	59,0	—	dB
	32,40 MHz	44,0	50,0	—	dB
	40,15 MHz	37,0	43,0	—	dB
Adjacent sound carrier VHF	40,40 MHz	44,0	52,0	—	dB
UHF	41,40 MHz	42,0	48,0	—	dB
Lower sidelobe	25,00 ... 31,90 MHz	40,0	44,0	—	dB
Upper sidelobe	40,40 ... 45,00 MHz	36,0	41,0	—	dB
<b>Reflected wave signal suppression</b>					
1,1 $\mu$ s ... 6,0 $\mu$ s after main pulse (test pulse 250 ns, carrier frequency 37,40 MHz)		42,0	50,0	—	dB
<b>Feedthrough signal suppression</b>					
1,2 $\mu$ s ... 1,0 $\mu$ s before main pulse (test pulse 250 ns, carrier frequency 37,40 MHz)		50,0	56,0	—	dB
<b>Group delay predistortion</b>					
(reference frequency 38,90 MHz)					
	$\Delta\tau$				
	36,70 MHz	—	-85	—	ns
	34,47 MHz	—	15	—	ns
<b>Impedance at 37,40 MHz</b>					
Input:	$Z_{IN} = R_{IN} \parallel C_{IN}$	—	1,6    14,2	—	k $\Omega$    pF
Output:	$Z_{OUT} = R_{OUT} \parallel C_{OUT}$	—	1,3    5,7	—	k $\Omega$    pF
<b>Temperature coefficient of frequency</b>					
	$TC_f$	—	-72	—	ppm/K



Data Sheet

Frequency response





SAW Components

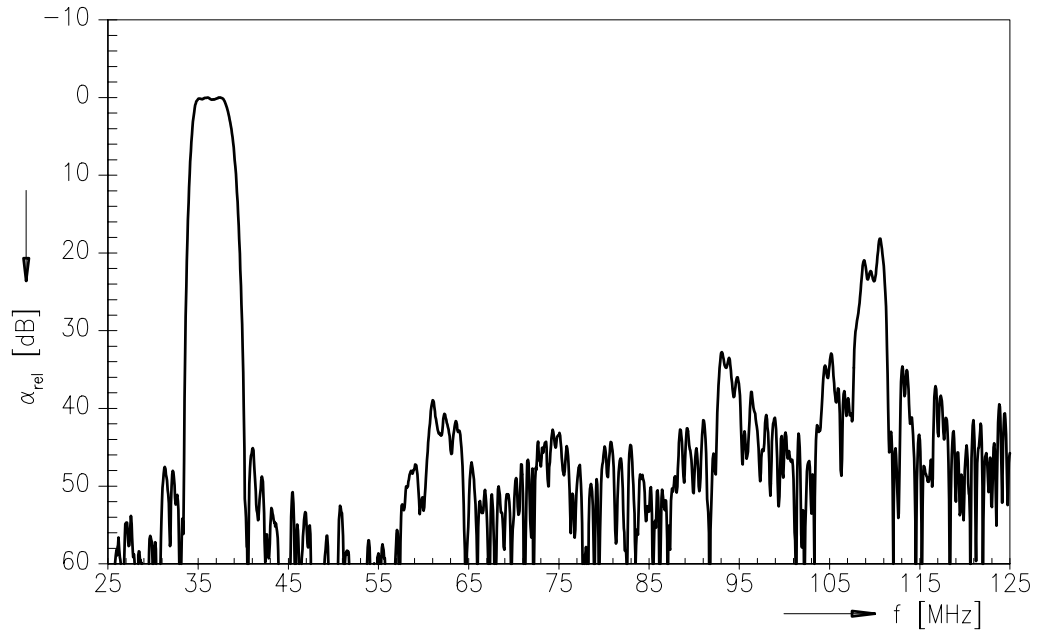
G 3962 M

IF Filter for Video Applications

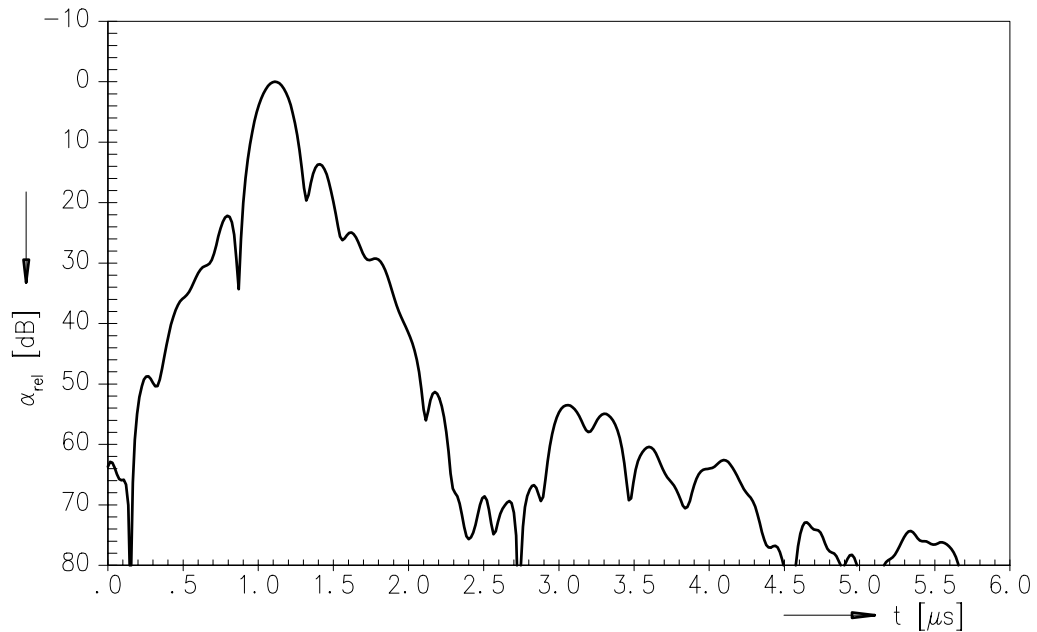
38,90 MHz

Data Sheet

Frequency response



Time domain response





**SAW Components**

**G 3962 M**

**IF Filter for Video Applications**

**38,90 MHz**

**Data Sheet**

**Published by EPCOS AG**

**Surface Acoustic Wave Components Division, SAW CE MM PD**

**P.O. Box 80 17 09, D-81617 München**

© EPCOS AG 2001. All Rights Reserved.

As far as patents or other rights of third parties are concerned, liability is only assumed for components per se, not for applications, processes and circuits implemented within components or assemblies.

The information describes the type of component and shall not be considered as assured characteristics.

Terms of delivery and rights to change design reserved.

For questions on technology, prices and delivery please contact the sales offices of EPCOS AG or the international representatives.

Due to technical requirements components may contain dangerous substances. For information on the type in question please also contact one of our sales offices.