



Chipsmall Limited consists of a professional team with an average of over 10 year of expertise in the distribution of electronic components. Based in Hongkong, we have already established firm and mutual-benefit business relationships with customers from,Europe,America and south Asia,supplying obsolete and hard-to-find components to meet their specific needs.

With the principle of “Quality Parts,Customers Priority,Honest Operation,and Considerate Service”,our business mainly focus on the distribution of electronic components. Line cards we deal with include Microchip,ALPS,ROHM,Xilinx,Pulse,ON,Everlight and Freescale. Main products comprise IC,Modules,Potentiometer,IC Socket,Relay,Connector.Our parts cover such applications as commercial,industrial, and automotives areas.

We are looking forward to setting up business relationship with you and hope to provide you with the best service and solution. Let us make a better world for our industry!



## Contact us

Tel: +86-755-8981 8866 Fax: +86-755-8427 6832

Email & Skype: info@chipsmall.com Web: www.chipsmall.com

Address: A1208, Overseas Decoration Building, #122 Zhenhua RD., Futian, Shenzhen, China





# *SAW Components*

*Data Sheet B3562*

Data Sheet

A large, stylized, 3D-rendered graphic of the word "EPCOS" in white, set against a dark background. The letters are thick and have a slight shadow, giving them a three-dimensional appearance. The graphic is positioned diagonally across the lower half of the page.



**SAW Components**

**B3562**

**Low-loss Filter**

**424,825 MHz**

**Data Sheet**

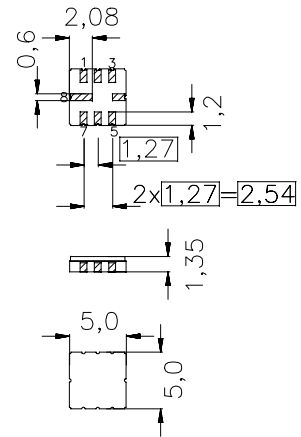
Ceramic package **QCC8C**

**Features**

- RF low-loss filter for remote control receivers
- Package for **Surface Mounted Technology (SMT)**
- Balanced and unbalanced operation possible

**Terminals**

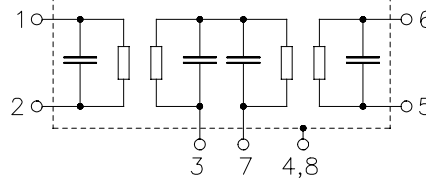
- Ni, gold plated



typ. dimensions in mm, approx. weight 0,1 g

**Pin configuration**

- 1 Input Ground
- 2 Input
- 5 Output
- 6 Output Ground
- 7 External coupling coil
- 4,8 Case-Ground
- 3 to be grounded



Type	Ordering code	Marking and package according to	Packing according to
B3562	B39421-B3562-U310	C61157-A7-A56	F61074-V8070-Z000

Electrostatic Sensitive Device (ESD)

**Maximum ratings**

Operable temperature range	$T_A$	-30/+85	°C	
Storage temperature range	$T_{stg}$	-45/+90	°C	
DC voltage	$V_{DC}$	0	V	
Source power	$P_S$	0	dBm	



**SAW Components**

**B3562**

**Low-loss Filter**

**424,825 MHz**

**Data Sheet**

**Characteristics**

Reference temperature:  $T_A = 25\text{ °C}$   
 Terminating source impedance:  $Z_S = 50\ \Omega$  and matching network  
 Terminating load impedance:  $Z_L = 50\ \Omega$  and matching network

		<b>min.</b>	<b>typ.</b>	<b>max.</b>	
<b>Center frequency</b> (center frequency between 3 dB points)	$f_C$	—	424,825	—	MHz
<b>Minimum insertion attenuation</b> 424,68 ... 425,05 MHz (including loss in matching coils)	$\alpha_{min}$	—	3,5	5,0	dB
<b>Pass band</b> (relative to $\alpha_{min}$ ) 424,68 ... 425,05 MHz		—	1,3	3,0	dB
<b>Relative attenuation</b> (relative to $\alpha_{min}$ )	$\alpha_{rel}$				
10,00 ... 421,00 MHz		45	50	—	dB
421,00 ... 424,08 MHz		33	38	—	dB
424,08 ... 424,36 MHz		10	15	—	dB
426,00 ... 432,00 MHz		30	35	—	dB
432,00 ... 445,00 MHz		40	45	—	dB
445,00 ... 1000,00 MHz		45	50	—	dB
<b>Impedance</b> for pass band matching <sup>2)</sup> Input: $Z_{IN} = R_{IN} \parallel C_{IN}$ Output: $Z_{OUT} = R_{OUT} \parallel C_{OUT}$		—	534    1,9 522    2,0	—	$\Omega \parallel \text{pF}$ $\Omega \parallel \text{pF}$
<b>Temperature coefficient of frequency</b> <sup>1)</sup>	$TC_f$	—	-0,03	—	ppm/K <sup>2</sup>
<b>Frequency inversion point</b>	$T_0$	10	—	40	°C

<sup>1)</sup>Temperature dependence of  $f_C$ :  $f_C(T_A) = f_C(T_0) (1 + TC_f(T_A - T_0)^2)$

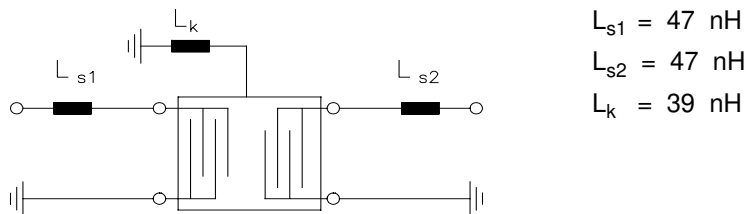
<sup>2)</sup> Impedance for passband matching bases on an ideal, perfect matching of the SAW filter to source- and to load impedance (here 50 Ohm). After the SAW filter is removed and input impedance into the input matching / output matching network is calculated.

The conjugate complex value of these characteristic impedances are the input and output impedances for flat passband. For more details, we refer to EPCOS application note #4.



Data Sheet

Matching network to 50 Ω (element values depend on pcb layout and equivalent circuit)



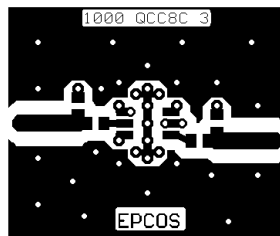
Minimising the crosstalk

For a good ultimate rejection a low crosstalk is necessary. Low crosstalk can be realised with a good RF layout. The major crosstalk mechanism is caused by the “ground-loop” problem.

Grounding loops are created if input-and output transducer GND are connected on the top-side of the PCB and fed to the system grounding plane by a common via hole. To avoid the common ground path, the ground pin of the input- and output transducer are fed to the system ground plane (bottom PCB plane) by their own via hole. The transducers’ grounding pins should be isolated from the upper grounding plane.

A common GND inductivity of 0.5nH degrades the ultimate rejection (crosstalk) by 20dB.

The optimised PCB layout, including matching network for transformation to 50 Ohm, is shown here. In this PCB layout the grounding loops are minimised to realise good ultimate rejection.



Optimised PCB layout for SAW filters in QCC8C package, pinning 2,5 (top side, scale 1:1)

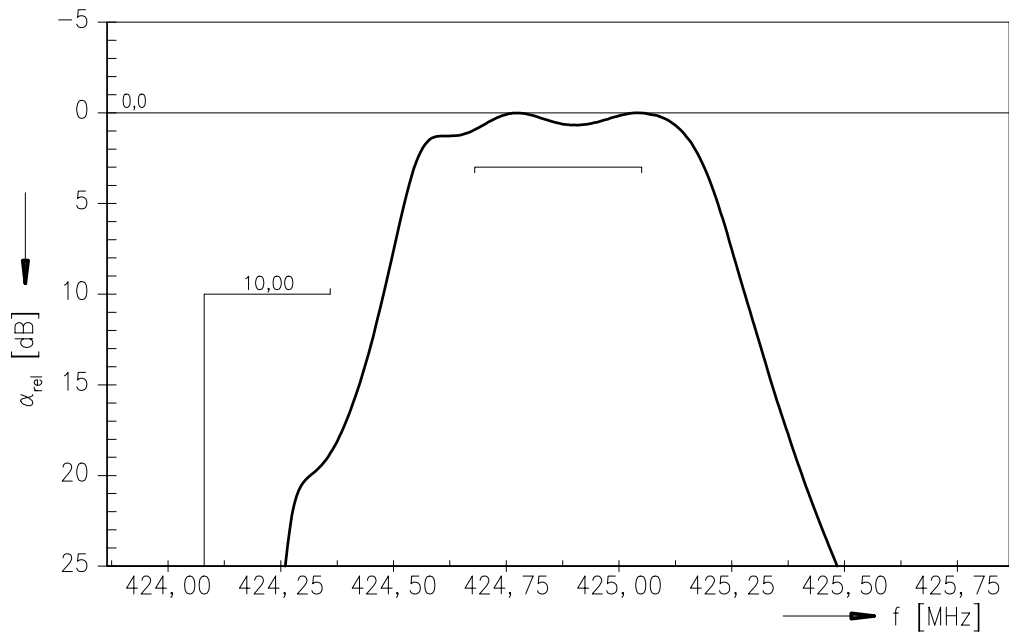
The bottom side is a copper plane (system ground area). The input and output grounding pins are isolated and connected to the common ground by separated via holes.

For good contact of the upper grounding area with the lower side it is necessary to place enough via holes.

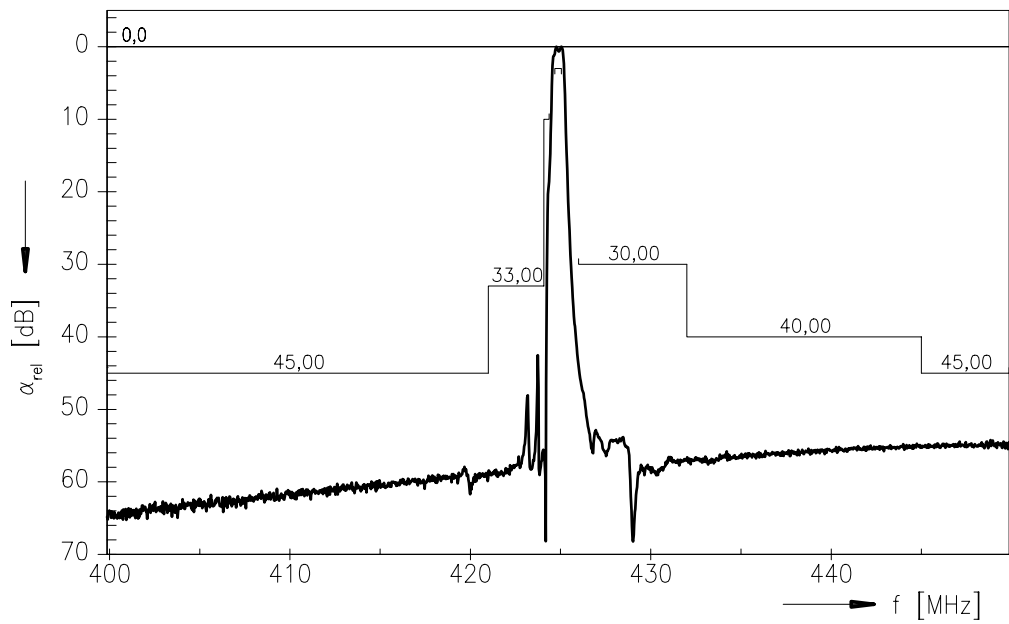


Data Sheet

Normalized frequency response



Normalized frequency response (wideband)





**SAW Components**

**B3562**

**Low-loss Filter**

**424,825 MHz**

**Data Sheet**

**Published by EPCOS AG**

**Surface Acoustic Wave Components Division, SAW CE AE PD**

**P.O. Box 80 17 09, D-81617 München**

© EPCOS AG 2001. All Rights Reserved.

As far as patents or other rights of third parties are concerned, liability is only assumed for components per se, not for applications, processes and circuits implemented within components or assemblies.

The information describes the type of component and shall not be considered as assured characteristics.

Terms of delivery and rights to change design reserved.

For questions on technology, prices and delivery please contact the sales offices of EPCOS AG or the international representatives.

Due to technical requirements components may contain dangerous substances. For information on the type in question please also contact one of our sales offices.