



Chipsmall Limited consists of a professional team with an average of over 10 year of expertise in the distribution of electronic components. Based in Hongkong, we have already established firm and mutual-benefit business relationships with customers from,Europe,America and south Asia,supplying obsolete and hard-to-find components to meet their specific needs.

With the principle of “Quality Parts,Customers Priority,Honest Operation,and Considerate Service”,our business mainly focus on the distribution of electronic components. Line cards we deal with include Microchip,ALPS,ROHM,Xilinx,Pulse,ON,Everlight and Freescale. Main products comprise IC,Modules,Potentiometer,IC Socket,Relay,Connector.Our parts cover such applications as commercial,industrial, and automotives areas.

We are looking forward to setting up business relationship with you and hope to provide you with the best service and solution. Let us make a better world for our industry!



## Contact us

Tel: +86-755-8981 8866 Fax: +86-755-8427 6832

Email & Skype: info@chipsmall.com Web: www.chipsmall.com

Address: A1208, Overseas Decoration Building, #122 Zhenhua RD., Futian, Shenzhen, China





# *SAW Components*

*Data Sheet B3767*

Data Sheet

A large, stylized, 3D-rendered graphic of the EPCOS logo. The letters "EPCOS" are rendered in a white, glowing, sans-serif font, appearing to be part of a larger, curved structure that resembles a stylized globe or a series of overlapping planes. The background is dark and textured.



**SAW Components**

**B3767**

**Low-loss Filter**

**447,725 MHz**

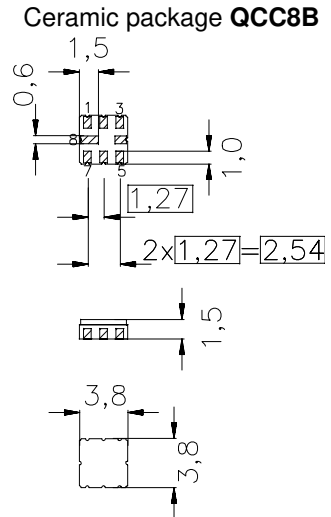
**Data Sheet**

**Features**

- RF low-loss filter for remote control receivers
- Package for **Surface Mounted Technology (SMT)**
- Balanced and unbalanced operation possible
- Protection layer: Elpas
- AEC-Q200 qualified component family

**Terminals**

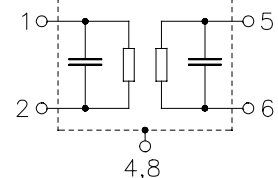
- Ni, gold plated



typ. dimensions in mm, approx. weight 0,07 g

**Pin configuration<sup>1)</sup>**

- 1 Input Ground (recommended) or Input
- 2 Input (recommended) or Input Ground
- 5 Output (recommended) or Output Ground
- 6 Output Ground (recommended) or Output
- 4,8 Case - Ground
- 3,7 to be grounded



Type	Ordering code	Marking and package according to	Packing according to
B3767	B39451-B3767-Z810	C61157-A7-A46	F61074-V8167-Z000

**Electrostatic Sensitive Device (ESD)**

**Maximum ratings**

Operable temperature range	$T_A$	-45/+120	°C	
Storage temperature range	$T_{stg}$	-45/+120	°C	
DC voltage	$V_{DC}$	6	V	
Source power	$P_S$	10	dBm	source impedance 50 $\Omega$

<sup>1)</sup> The recommended pin configuration usually offers best suppression of electrical crosstalk. The filter characteristics refer to this configuration.



**SAW Components**

**B3767**

**Low-loss Filter**

**447,725 MHz**

**Data Sheet**

**Characteristics**

Reference temperature:  $T_A = -40 \dots +95^\circ \text{C}$   
 Terminating source impedance:  $Z_S = 50 \Omega$  and matching network  
 Terminating load impedance:  $Z_L = 50 \Omega$  and matching network

		<b>min.</b>	<b>typ.</b>	<b>max.</b>	
<b>Center frequency</b> (center frequency between 3 dB points)	$f_C$	—	447,725	—	MHz
<b>Minimum insertion attenuation</b> including loss in matching elements	$\alpha_{\min}$	—	1,9	2,7	dB
excluding loss in matching elements		—	1,4	2,2	dB
<b>Pass band</b> (relative to $\alpha_{\min}$ )					
447,60 ... 447,85 MHz		—	0,5	2,0	dB
447,58 ... 447,87 MHz		—	0,7	3,0	dB
447,56 ... 447,91 MHz		—	1,0	6,0	dB
<b>Filter bandwidth</b>					
$\alpha_{\text{rel}} \leq 3 \text{ dB}$		0,61	0,67	0,73	MHz
<b>Relative attenuation</b> (relative to $\alpha_{\min}$ )	$\alpha_{\text{rel}}$				
10,00 ... 427,80 MHz		51	55	—	dB
427,80 ... 437,30 MHz		47	51	—	dB
437,30 ... 445,52 MHz		29	34	—	dB
445,52 ... 445,92 MHz		22	27	—	dB
445,92 ... 446,90 MHz		17	21	—	dB
448,72 ... 455,80 MHz		18	21	—	dB
455,80 ... 500,00 MHz		39	44	—	dB
500,00 ... 720,00 MHz		50	55	—	dB
720,00 ... 830,00 MHz		45	50	—	dB
830,00 ... 1000,00 MHz		60	65	—	dB
1000,00 ... 2500,00 MHz		45	50	—	dB
<b>Impedance</b> for pass band matching <sup>1)</sup>					
Input: $Z_{\text{IN}} = R_{\text{IN}} \parallel C_{\text{IN}}$		—	240 $\parallel$ 2,2	—	$\Omega \parallel \text{pF}$
Output: $Z_{\text{OUT}} = R_{\text{OUT}} \parallel C_{\text{OUT}}$		—	240 $\parallel$ 2,2	—	$\Omega \parallel \text{pF}$

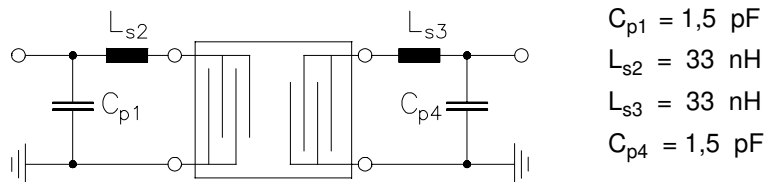
<sup>1)</sup> Impedance for passband matching bases on an ideal, perfect matching of the SAW filter to source- and to load impedance (here 50 Ohm). After the SAW filter is removed and input impedance into the input matching / output matching network is calculated.

The conjugate complex value of these characteristic impedances are the input and output impedances for flat passband. For more details, we refer to EPCOS application note #4.



Data Sheet

Matching network to 50 Ω (element values depend on pcb layout and equivalent circuit)



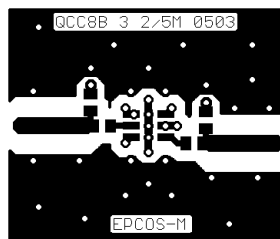
Minimising the crosstalk

For a good ultimate rejection a low crosstalk is necessary. Low crosstalk can be realised with a good RF layout. The major crosstalk mechanism is caused by the “ground-loop” problem.

Grounding loops are created if input-and output transducer GND are connected on the top-side of the PCB and fed to the system grounding plane by a common via hole. To avoid the common ground path, the ground pin of the input- and output transducer are fed to the system ground plane (bottom PCB plane) by their own via hole. The transducers’ grounding pins should be isolated from the upper grounding plane.

A common GND inductivity of 0.5nH degrades the ultimate rejection (crosstalk) by 20dB.

The optimised PCB layout, including matching network for transformation to 50 Ohm, is shown here. In this PCB layout the grounding loops are minimised to realise good ultimate rejection.



Optimised PCB layout for SAW filters in QCC8B package, pinning 2,5 (top side, scale 1:1)

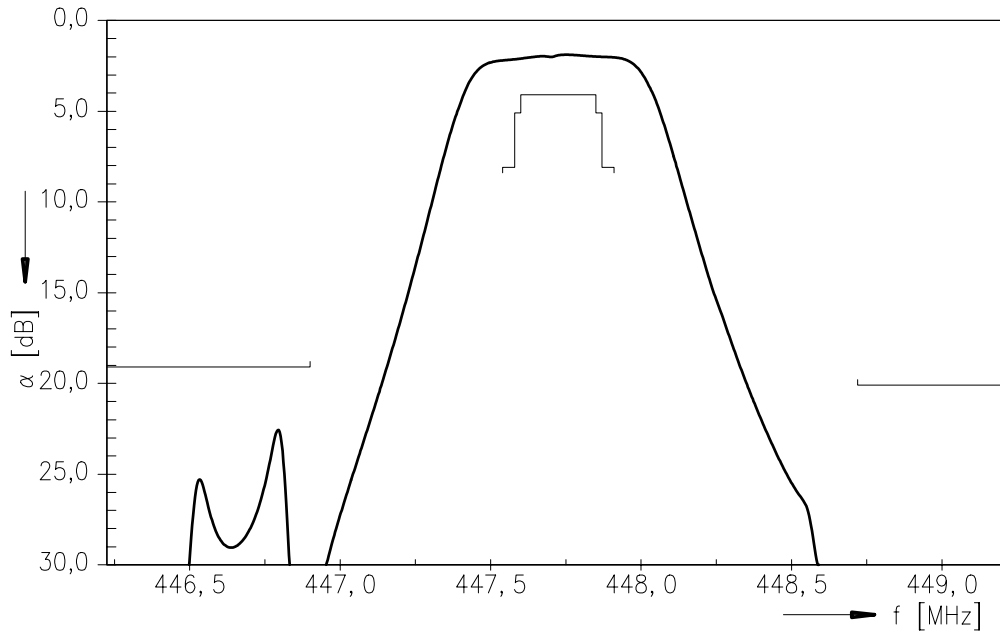
The bottom side is a copper plane (system ground area). The input and output grounding pins are isolated and connected to the common ground by separated via holes.

For good contact of the upper grounding area with the lower side it is necessary to place enough via holes.

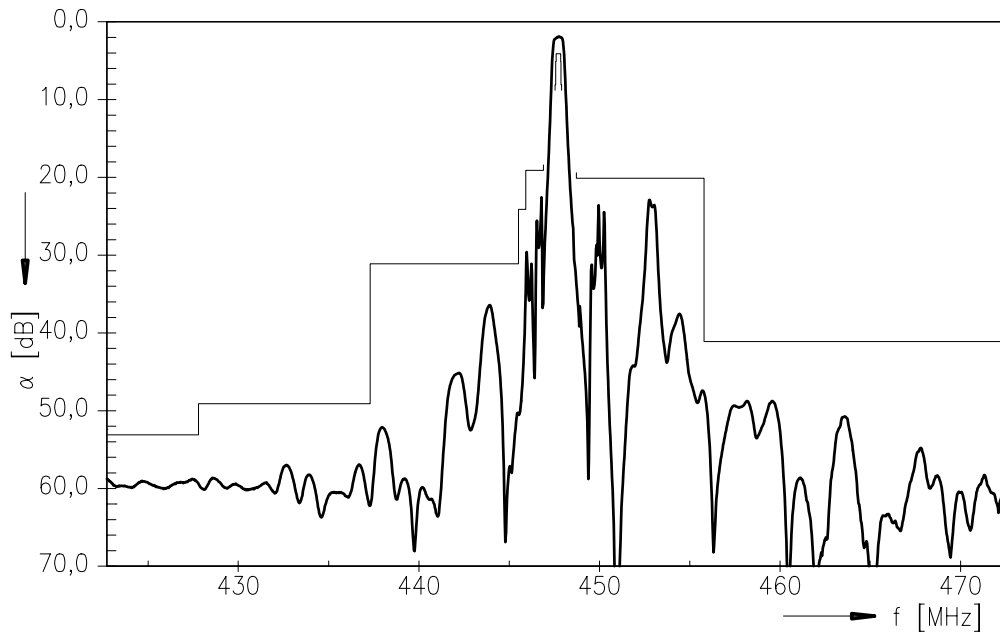


Data Sheet

Frequency response



Frequency response (wideband)





SAW Components

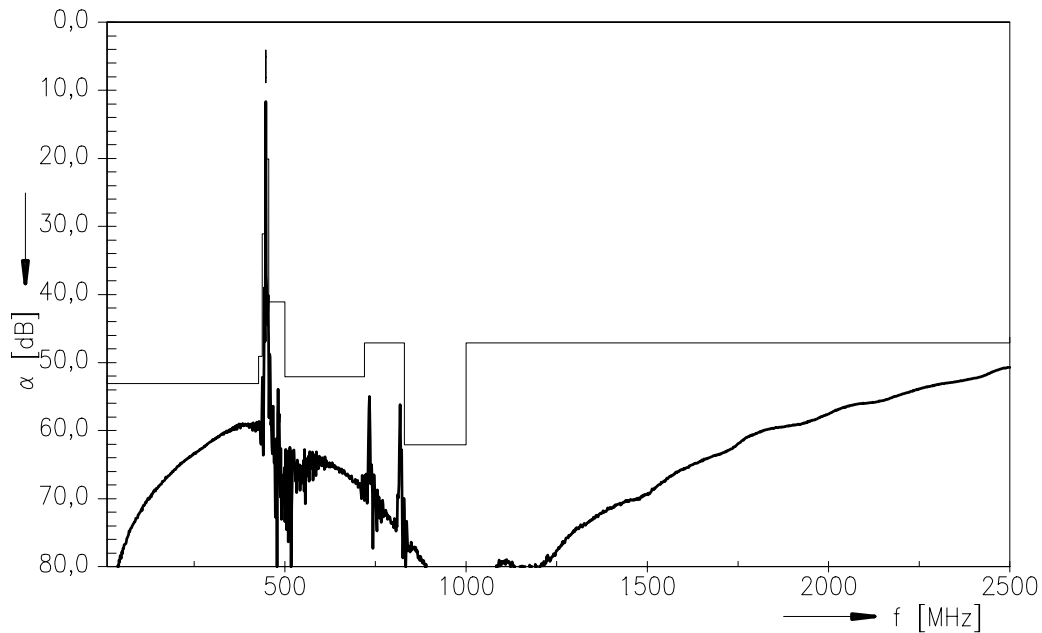
B3767

Low-loss Filter

447,725 MHz

Data Sheet

Frequency response (ultimate rejection)



Published by EPCOS AG

Surface Acoustic Wave Components Division, SAW CE AE PD

P.O. Box 80 17 09, D-81617 München

© EPCOS AG 2004. All Rights Reserved. Reproduction, publication and dissemination of this brochure and the information contained therein without EPCOS' prior express consent is prohibited.

The information contained in this brochure describes the type of component and shall not be considered as guaranteed characteristics. Purchase orders are subject to the General Conditions for the Supply of Products and Services of the Electrical and Electronics Industry recommended by the ZVEI (German Electrical and Electronic Manufacturers' Association), unless otherwise agreed.

This brochure replaces the previous edition.

For questions on technology, prices and delivery please contact the Sales Offices of EPCOS AG or the international Representatives.

Due to technical requirements components may contain dangerous substances. For information on the type in question please also contact one of our Sales Offices.