



Chipsmall Limited consists of a professional team with an average of over 10 year of expertise in the distribution of electronic components. Based in Hongkong, we have already established firm and mutual-benefit business relationships with customers from,Europe,America and south Asia,supplying obsolete and hard-to-find components to meet their specific needs.

With the principle of “Quality Parts,Customers Priority,Honest Operation,and Considerate Service”,our business mainly focus on the distribution of electronic components. Line cards we deal with include Microchip,ALPS,ROHM,Xilinx,Pulse,ON,Everlight and Freescale. Main products comprise IC,Modules,Potentiometer,IC Socket,Relay,Connector.Our parts cover such applications as commercial,industrial, and automotives areas.

We are looking forward to setting up business relationship with you and hope to provide you with the best service and solution. Let us make a better world for our industry!



## Contact us

Tel: +86-755-8981 8866 Fax: +86-755-8427 6832

Email & Skype: info@chipsmall.com Web: www.chipsmall.com

Address: A1208, Overseas Decoration Building, #122 Zhenhua RD., Futian, Shenzhen, China





# *SAW Components*

*Data Sheet N 3958 M*

Data Sheet

A large, stylized, 3D-rendered graphic of the EPCOS logo. The word "EPCOS" is written in a bold, sans-serif font, with the letters appearing to be part of a curved, metallic-looking structure. The background is dark and textured, suggesting a circuit board or a similar technical surface.

EPCOS



**SAW Components**

**N 3958 M**

**IF Filter for Video Applications**

**58,75 MHz**

**Data Sheet**

**Standard**

Plastic package **SIP5K**

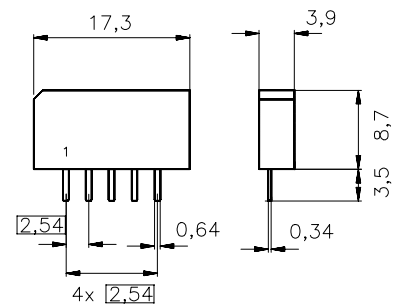
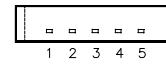
- M

**Features**

- TV IF filter with Nyquist slope and sound suppression
- Constant group delay

**Terminals**

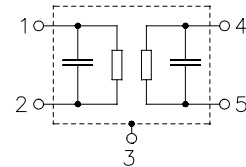
- Tinned CuFe alloy



Dimensions in mm, approx. weight 1,0 g

**Pin configuration**

- 1 Input
- 2 Input - ground
- 3 Chip carrier - ground
- 4 Output
- 5 Output



Type	Ordering code	Marking and package according to	Packing according to
N 3958 M	B39588-N3958-M100	C61157-A1-A15	F61074-V8067-Z000

**Maximum ratings**

Operable temperature range	$T_A$	-25/+65	°C	
Storage temperature range	$T_{stg}$	-40/+85	°C	
DC voltage	$V_{DC}$	12	V	between any terminals
AC voltage	$V_{pp}$	10	V	between any terminals


**SAW Components**
**N 3958 M**
**IF Filter for Video Applications**
**58,75 MHz**
**Data Sheet**
**Characteristics**

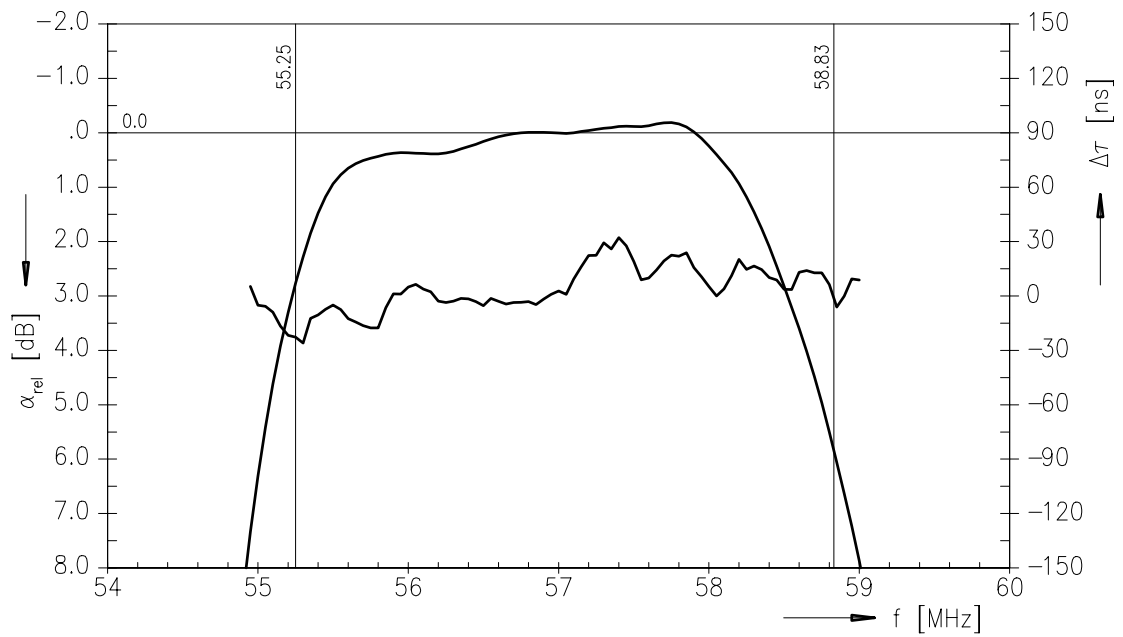
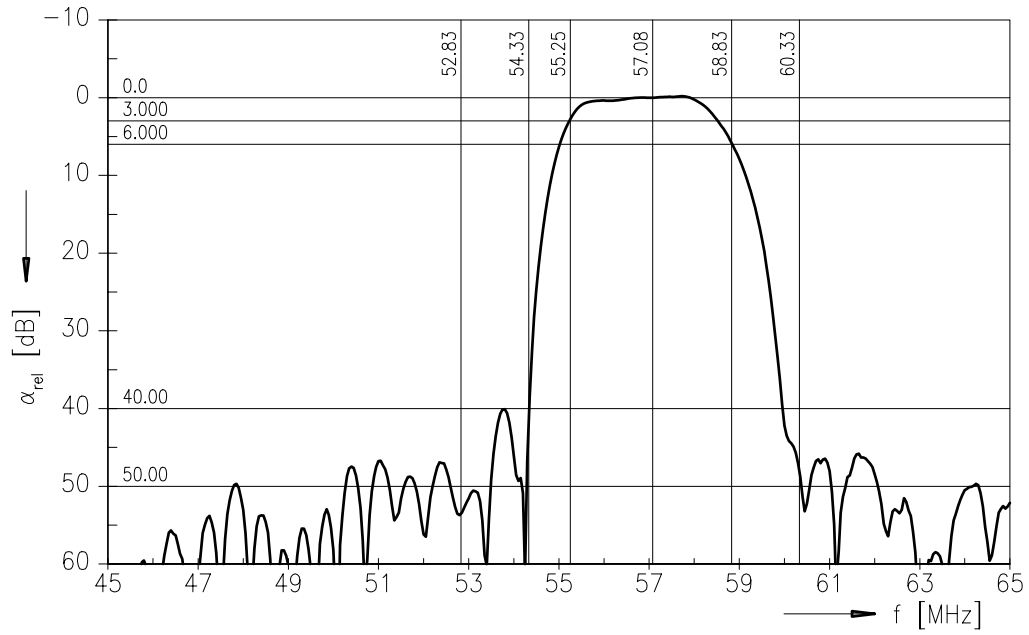
Reference temperature:  $T_A = 25 (45) \text{ }^\circ\text{C}$   
 Terminating source impedance:  $Z_S = 50 \text{ } \Omega$   
 Terminating load impedance:  $Z_L = 2 \text{ k}\Omega \parallel 3 \text{ pF}$

		min.	typ.	max.	
<b>Insertion attenuation</b>	$\alpha$				
Reference level for the following data	57,08 (57,00) MHz	11,3	12,8	14,3	dB
<b>Relative attenuation</b>	$\alpha_{rel}$				
Picture carrier	58,83 (58,75) MHz	4,8	5,8	6,8	dB
Color carrier	55,25 (55,17) MHz	1,8	2,8	3,8	dB
Sound carrier	54,33 (54,25) MHz	30,0	40,0	—	dB
Adjacent picture carrier	52,83 (52,75) MHz	44,0	54,0	—	dB
Adjacent sound carrier	60,33 (60,25) MHz	40,0	48,0	—	dB
Lower sidelobe					
45,08 ... 52,83 (45,00 ... 52,75) MHz		40,0	46,0	—	dB
Upper sidelobe					
60,33 ... 65,08 (60,25 ... 65,00) MHz		36,0	42,0	—	dB
<b>Reflected wave signal suppression</b>					
1,1 $\mu\text{s}$ ... 6,0 $\mu\text{s}$ after main pulse (test pulse 250 ns, carrier frequency 57,08 (57,00) MHz)		42,0	48,0	—	dB
<b>Feedthrough signal suppression</b>					
1,2 $\mu\text{s}$ ... 1,1 $\mu\text{s}$ before main pulse (test pulse 250 ns, carrier frequency 57,08 (57,00) MHz)		50,0	56,0	—	dB
<b>Group delay ripple (p-p)</b>	$\Delta\tau$	—	60	—	ns
<b>Impedance at 57,08 (57,00) MHz</b>					
Input: $Z_{IN} = R_{IN} \parallel C_{IN}$		—	1,2 $\parallel$ 8,9	—	k $\Omega$ $\parallel$ pF
Output: $Z_{OUT} = R_{OUT} \parallel C_{OUT}$		—	0,8 $\parallel$ 2,7	—	k $\Omega$ $\parallel$ pF
<b>Temperature coefficient of frequency</b>	$TC_f$	—	-72	—	ppm/K



Data Sheet

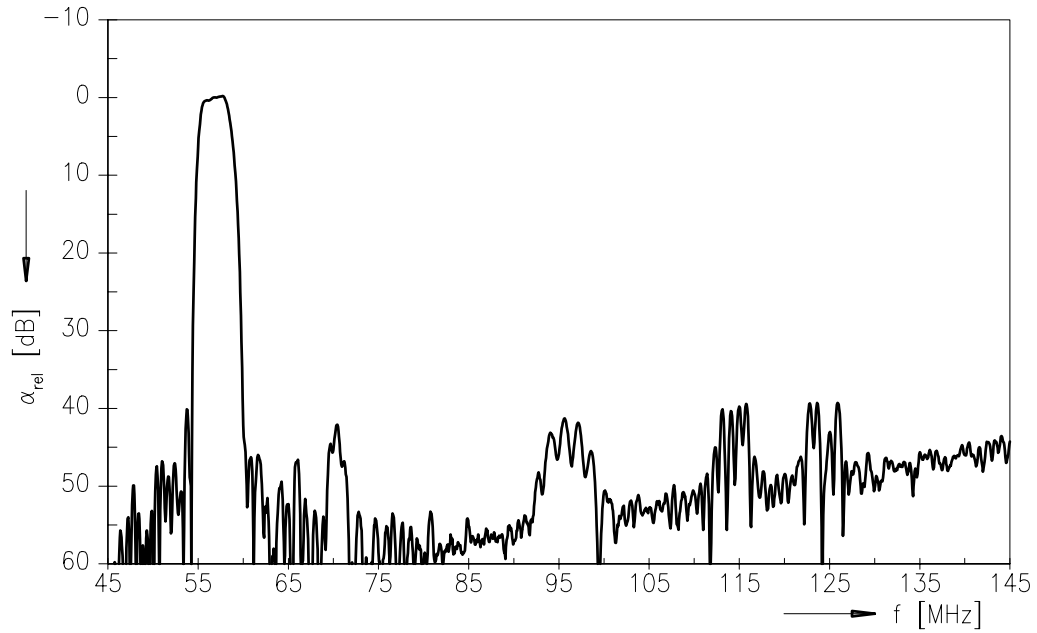
Frequency response



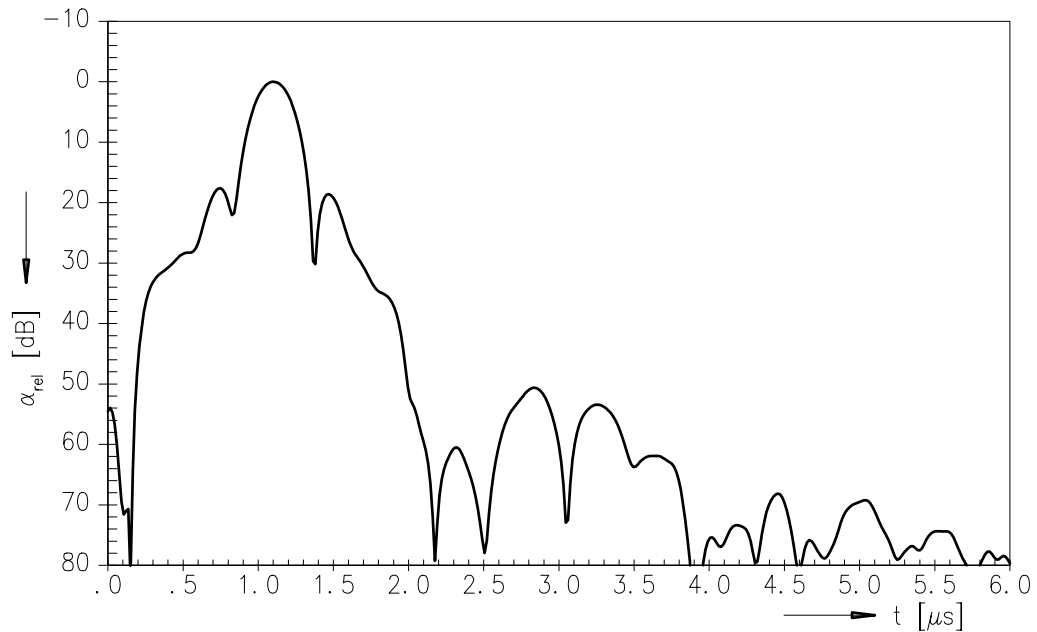


Data Sheet

Frequency response



Time domain response





**SAW Components**

**N 3958 M**

**IF Filter for Video Applications**

**58,75 MHz**

**Data Sheet**

**Published by EPCOS AG**

**Surface Acoustic Wave Components Division, SAW CE MM PD**

**P.O. Box 80 17 09, D-81617 München**

© EPCOS AG 2001. All Rights Reserved.

As far as patents or other rights of third parties are concerned, liability is only assumed for components per se, not for applications, processes and circuits implemented within components or assemblies.

The information describes the type of component and shall not be considered as assured characteristics.

Terms of delivery and rights to change design reserved.

For questions on technology, prices and delivery please contact the sales offices of EPCOS AG or the international representatives.

Due to technical requirements components may contain dangerous substances. For information on the type in question please also contact one of our sales offices.