



Chipsmall Limited consists of a professional team with an average of over 10 year of expertise in the distribution of electronic components. Based in Hongkong, we have already established firm and mutual-benefit business relationships with customers from,Europe,America and south Asia,supplying obsolete and hard-to-find components to meet their specific needs.

With the principle of "Quality Parts,Customers Priority,Honest Operation,and Considerate Service",our business mainly focus on the distribution of electronic components. Line cards we deal with include Microchip,ALPS,ROHM,Xilinx,Pulse,ON,Everlight and Freescale. Main products comprise IC,Modules,Potentiometer,IC Socket,Relay,Connector.Our parts cover such applications as commercial,industrial, and automotives areas.

We are looking forward to setting up business relationship with you and hope to provide you with the best service and solution. Let us make a better world for our industry!



Contact us

Tel: +86-755-8981 8866 Fax: +86-755-8427 6832

Email & Skype: info@chipsmall.com Web: www.chipsmall.com

Address: A1208, Overseas Decoration Building, #122 Zhenhua RD., Futian, Shenzhen, China





SAW Components

Data Sheet B3705

Data Sheet

A large, stylized, 3D-rendered graphic of the EPCOS logo. The letters "EPCOS" are rendered in a white, glowing, sans-serif font, appearing to be part of a larger, curved structure that resembles a globe or a stylized wave. The background is dark and textured.



SAW Components

B3705

Low Loss Filter

915,00 MHz

Data Sheet

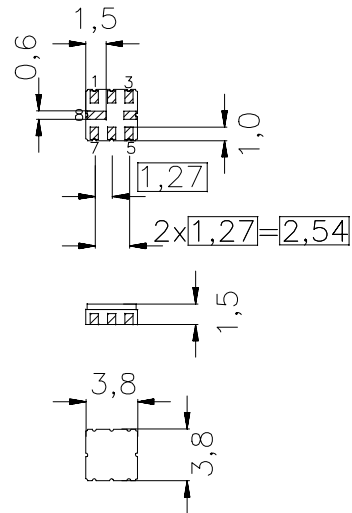
Features

- RF low-loss filter for wireless audio application
- Package for **S**urface **M**ounted **T**echnology (**SMT**)
- Hermetically sealed ceramic package
- No Matching network required for operation at 50 Ω

Terminals

- Ni, gold plated

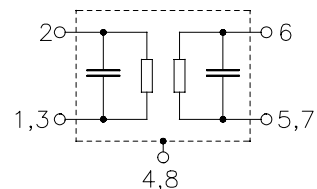
Ceramic package **QCC8B**



Dimensions in mm, approx. weight 0,1 g

Pin configuration

- 2 Input
- 1,3 Input Ground
- 6 Output
- 5,7 Output Ground
- 4,8 to be grounded



Type	Ordering code	Marking and Package according to	Packing according to
B3705	B39921-B3705-Z810	C61157-A7-A46	F61074-V8070-Z000

Electrostatic Sensitive Device (ESD)

Maximum ratings

Operable temperature range	T_A	-40/+85	°C	source impedance 50 Ω
Storage temperature range	T_{stg}	-40/+85	°C	
DC voltage	V_{DC}	0	V	
Source power	P_S	0	dBm	



SAW Components

B3705

Low Loss Filter

915,00 MHz

Data Sheet

Characteristics (Spec. 1)

Reference temperature: $T_A = +5 \dots 65 \text{ }^\circ\text{C}$
 Terminating source impedance: $Z_S = 50 \text{ } \Omega$
 Terminating load impedance: $Z_L = 50 \text{ } \Omega$

		min.	typ.	max.	
Center frequency	f_c	—	914,70	—	MHz
Maximum insertion attenuation					
913,90 ... 915,50 MHz	α_{\max}	—	4,0	6,0	dB
Amplitude ripple (p-p)	$\Delta\alpha$				
913,90 ... 915,50 MHz		—	1,0	2,0	dB
Relative attenuation (relative to α_{\max})	α_{rel}				
10,00 ... 890,00 MHz		43	48	—	dB
892,30 ... 895,10 MHz		30	35	—	dB
903,40 ... 904,60 MHz		25	35	—	dB
955,00 ... 1100,00 MHz		38	45	—	dB
Temperature coefficient of frequency	TC_f	—	-30	—	ppm/K



SAW Components

B3705

Low Loss Filter

915,00 MHz

Data Sheet

Characteristics (Spec. 2)

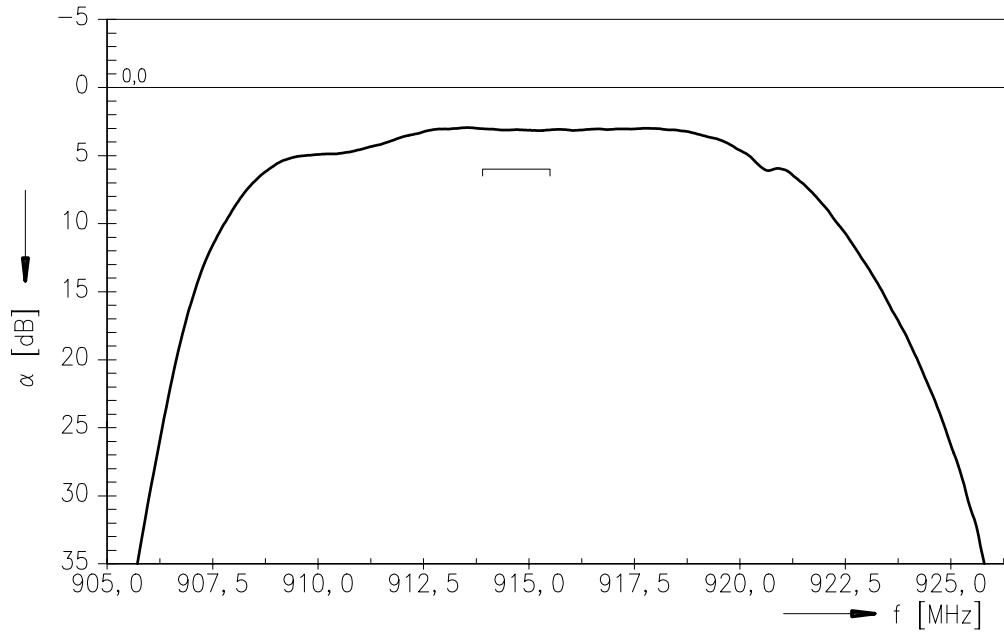
Reference temperature: $T_A = -40 \dots +85 \text{ }^\circ\text{C}$
 Terminating source impedance: $Z_S = 50 \text{ } \Omega$
 Terminating load impedance: $Z_L = 50 \text{ } \Omega$

		min.	typ.	max.	
Center frequency	f_c	—	914,70	—	MHz
Maximum insertion attenuation					
914,50 ... 916,00 MHz	α_{\max}	—	4,0	6,0	dB
Amplitude ripple (p-p)	$\Delta\alpha$				
914,50 ... 916,00 MHz		—	1,0	2,0	dB
Relative attenuation (relative to α_{\max})	α_{rel}				
10,00 ... 890,00 MHz		43	48	—	dB
892,30 ... 895,10 MHz		30	35	—	dB
955,00 ... 1100,00 MHz		38	45	—	dB
Temperature coefficient of frequency	TC_f	—	-30	—	ppm/K

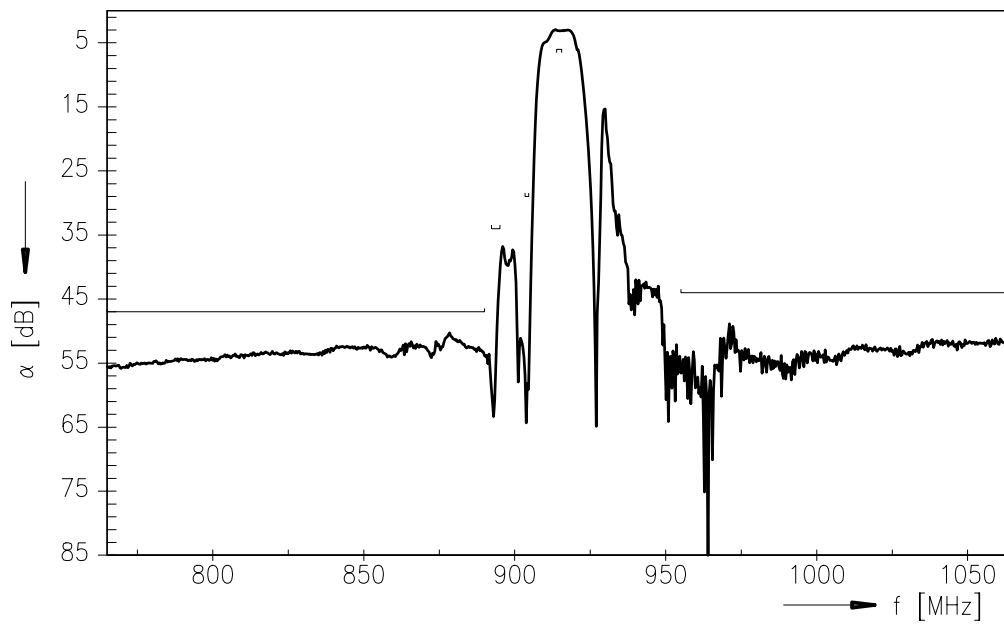


Data Sheet

Normalized frequency response (Spec.1)



Normalized frequency response (Spec. 1) (wideband)





SAW Components

B3705

Low Loss Filter

915,00 MHz

Data Sheet

Published by EPCOS AG

Surface Acoustic Wave Components Division, SAW CE AE

P.O. Box 80 17 09, 81617 Munich, GERMANY

©.EPCOS AG 2002. Reproduction, publication and dissemination of this brochure and the information contained therein without EPCOS' prior express consent is prohibited.

Purchase orders are subject to the General Conditions for the Supply of Products and Services of the Electrical and Electronics Industry recommended by the ZVEI (German Electrical and Electronic Manufacturers' Association), unless otherwise agreed.

This brochure replaces the previous edition.

For questions on technology, prices and delivery please contact the Sales Offices of EPCOS AG or the international Representatives.

Due to technical requirements components may contain dangerous substances. For information on the type in question please also contact one of our Sales Offices.