



Chipsmall Limited consists of a professional team with an average of over 10 year of expertise in the distribution of electronic components. Based in Hongkong, we have already established firm and mutual-benefit business relationships with customers from,Europe,America and south Asia,supplying obsolete and hard-to-find components to meet their specific needs.

With the principle of "Quality Parts,Customers Priority,Honest Operation,and Considerate Service",our business mainly focus on the distribution of electronic components. Line cards we deal with include Microchip,ALPS,ROHM,Xilinx,Pulse,ON,Everlight and Freescale. Main products comprise IC,Modules,Potentiometer,IC Socket,Relay,Connector.Our parts cover such applications as commercial,industrial, and automotives areas.

We are looking forward to setting up business relationship with you and hope to provide you with the best service and solution. Let us make a better world for our industry!



## Contact us

Tel: +86-755-8981 8866 Fax: +86-755-8427 6832

Email & Skype: info@chipsmall.com Web: www.chipsmall.com

Address: A1208, Overseas Decoration Building, #122 Zhenhua RD., Futian, Shenzhen, China



# XDSL SPLITTER FILTER MODULE

## B8887NL

SmartER Series



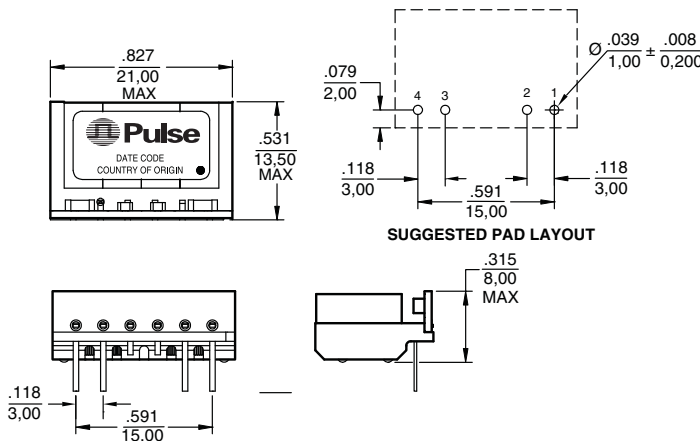
-  POTS CO splitter for standard ADSL / VDSL2 applications
-  LPF compliant to China YD/T 1187-2006 ADSL2+ and VDSL2 requirements
-  LPF matched to 600  $\Omega$  impedance
-  Low profile part
-  Compliant with Broadband Forum TR-127 standard for VDSL2 applications
-  Patented technology US7598837, US7598839, CN1667763, EP1644943, TWI316724, CA2531599

### Electrical Specifications @ 25°C

PARAMETER	FREQUENCY	
POTS Impedance	100 Hz to 3.4k Hz	600 $\Omega$
POTS Insertion Loss	1 kHz	0.3 dB MAX
POTS Insertion Loss Distortion relative to 1 kHz	300 Hz to 3.4 kHz	0.3 dB MAX
POTS Return Loss	300 Hz to 500 Hz / 2 kHz-3.4 kHz	14 dB MIN
	500 Hz to 2kHz	18 dB MIN
POTS Group Delay	500 Hz to 3.4 kHz	150 $\mu$ s MAX
Longitudinal Balance	50 Hz to 600 Hz	40 dB MIN
	600 Hz to 3.4 kHz	46 dB MIN
	3.4k Hz to 30 kHz	40 dB MIN
	30 kHz to 1104 kHz	45 dB MIN
	1104 kHz to 12 MHz	30 dB MIN
xDSL Attenuation	20kHz to 138 kHz	45 dB MIN
	138 kHz to 17 MHz	55 dB MIN
Tip to Ring Capacitance	—	20 nF MIN 115 nF MAX
Tip to Ring Insulation	—	5 M $\Omega$ MIN
DC Current	—	100 mA MAX
Total DC Resistance	—	25 $\Omega$ MAX

### Mechanical

B8887NL



Weight . . . . . 5.0 grams  
 Tray . . . . . .60/tray  
 Dimensions:  $\frac{\text{Inches}}{\text{mm}}$   
 Unless otherwise specified, all  
 tolerances are  $\pm \frac{.010}{0,25}$

# XDSL SPLITTER FILTER MODULE

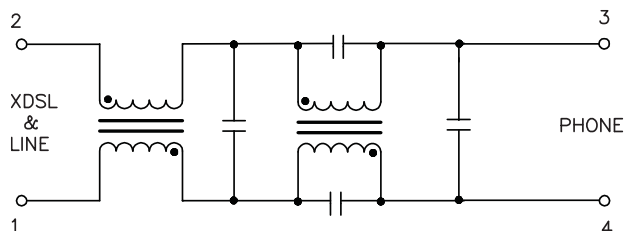
## B8887NL

SmartER Series



### Schematic

**B8887NL**



### For More Information:

**Pulse Worldwide Headquarters**

12220 World Trade Dr.  
San Diego, CA 92128  
U.S.A.

[www.pulseeng.com](http://www.pulseeng.com)

Tel: 858 674 8100  
Fax: 858 674 8262

**Pulse Europe**

Zeppelinstrasse 15  
D-71083 Herrenberg  
Germany

Tel: 49 7032 7806 0  
Fax: 49 7032 7806 135

**Pulse China Headquarters**

B402, Shenzhen Academy of  
Aerospace Technology Bldg.  
10th Kejinan Rd.  
High-Tech Zone  
Nanshan District  
Shenzhen, PR China 518057

Tel: 86 755 33966678  
Fax: 86 755 33966700

**Pulse North China**

Room 2704/2705  
Super Ocean Finance Ctr.  
2067 Yan An Rd. West  
Shanghai 200336  
China

Tel: 86 21 62787060  
Fax: 86 2162786973

**Pulse South Asia**

135 Joo Seng Rd.  
#03-02  
PM Industrial Bldg.  
Singapore 368363

Tel: 65 6287 8998  
Fax: 65 6287 8998

**Pulse North Asia**

3F, No. 198  
Zhongyuan Rd.  
Zhongli City  
Taoyuan County 320  
Taiwan R. O. C.

Tel: 886 3 4356768  
Fax: 886 3 4356823 (Pulse)  
Fax: 886 3 4356820 (FRE)

Performance warranty of products offered on this data sheet is limited to the parameters specified. Data is subject to change without notice. Other brand and product names mentioned herein may be trademarks or registered trademarks of their respective owners.

© Copyright, 2010. Pulse Engineering, Inc. All rights reserved.