



Chipsmall Limited consists of a professional team with an average of over 10 year of expertise in the distribution of electronic components. Based in Hongkong, we have already established firm and mutual-benefit business relationships with customers from,Europe,America and south Asia,supplying obsolete and hard-to-find components to meet their specific needs.

With the principle of “Quality Parts,Customers Priority,Honest Operation,and Considerate Service”,our business mainly focus on the distribution of electronic components. Line cards we deal with include Microchip,ALPS,ROHM,Xilinx,Pulse,ON,Everlight and Freescale. Main products comprise IC,Modules,Potentiometer,IC Socket,Relay,Connector.Our parts cover such applications as commercial,industrial, and automotives areas.

We are looking forward to setting up business relationship with you and hope to provide you with the best service and solution. Let us make a better world for our industry!



## Contact us

Tel: +86-755-8981 8866 Fax: +86-755-8427 6832

Email & Skype: info@chipsmall.com Web: www.chipsmall.com

Address: A1208, Overseas Decoration Building, #122 Zhenhua RD., Futian, Shenzhen, China



# Reversible motor driver

## BA6218

The BA6218 reversible-motor driver supplies an output current of 0.7A (maximum). Two logic inputs allow four output modes: forward, reverse, idling, and braking. The logic section and power section have separate ground pins. By connecting an electronic governor, the IC can be used for controlling reversible, variable-speed motors.

### ● Features

- 1) Built-in surge absorbing diodes.
- 2) Small standby supply current.
- 3) Wide range of operating voltage. (4.5 ~ 15V)
- 4) Interfaces with TTL devices.

### ● Absolute maximum ratings (Ta = 25°C)

Parameter	Symbol	Limits	Unit
Power supply voltage	V <sub>CC</sub>	18	V
Power dissipation	P <sub>d</sub>	800*	mW
Operating temperature	T <sub>opr</sub>	-20~+60	°C
Storage temperature	T <sub>stg</sub>	-55~+125	°C
Maximum output current	I <sub>o</sub>	0.7	A

\* Reduced by 8 mW for each increase in Ta of 1°C over 25°C.

### ● Recommended operating conditions (Ta = 25°C)

Parameter	Min.	Typ.	Max.	Unit
Voltage applied between V <sub>CC</sub> (pin 6) and GND (pins 2 and 5)	4.5	—	15	V
Voltage applied between V <sub>CC</sub> (pin 6) and COM (pin 8)	4.0	—	15	V

### ● Electrical characteristics (unless otherwise noted, Ta = 25°C, V<sub>CC</sub> = 9V)

Parameter	Symbol	Min.	Typ.	Max.	Unit	Conditions	Measurement circuit
Supply current 1	I <sub>o1</sub>	18	34	50	mA	1pin "H", 3pin "L" or 1pin "L", 3pin "H", R <sub>L</sub> =∞	Fig.2
Supply current 2	I <sub>o2</sub>	34	52	70	mA	1pin "H", 3pin "H", R <sub>L</sub> =∞	Fig.2
Standby supply current	I <sub>ST</sub>	—	1	11	μA	1pin "L", 3pin "L"	Fig.2
Input high level voltage	V <sub>IH</sub>	2.0	—	—	V	—	Fig.2
Input low level voltage	V <sub>IL</sub>	—	—	0.8	V	—	Fig.2
Input high level current	I <sub>H</sub>	—	93	135	μA	V <sub>IN</sub> =2.0V	Fig.2
Output saturation voltage	V <sub>CE</sub>	—	1.2	1.6	V	I <sub>o</sub> Sum of high and low side output transistor voltages with I <sub>o</sub> = 200 mA	Fig.2

● Input truth table

3pin (IN)	1pin (IN)	7pin (OUT)	9pin (OUT)
H	L	L	H
L	H	H	L
H	H	L	L
L	L	OPEN	OPEN

Note : HIGH level input is 2.0 V or more.  
 LOW level input is 0.8 V or less.

● Internal circuit configuration

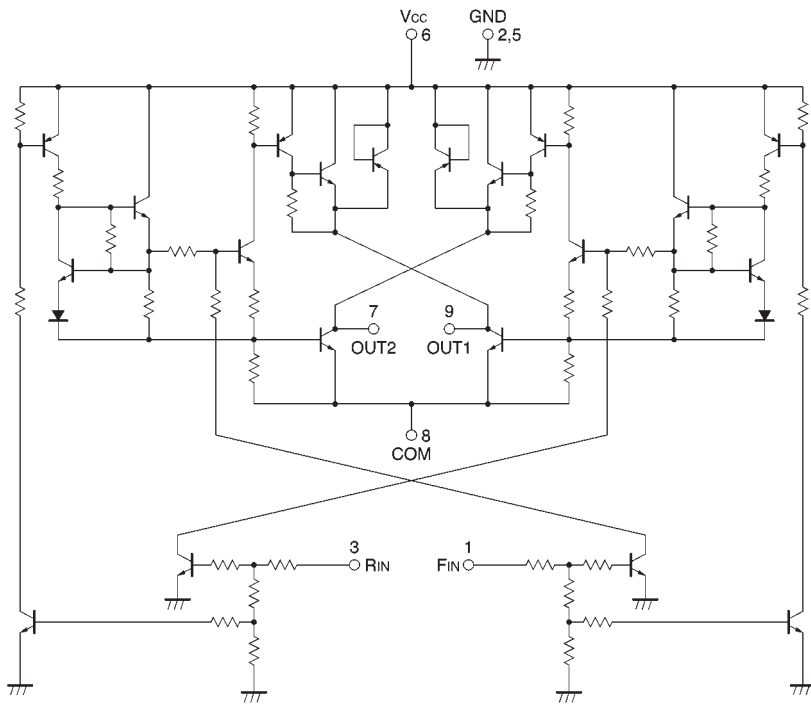


Fig.1

● Measurement circuit

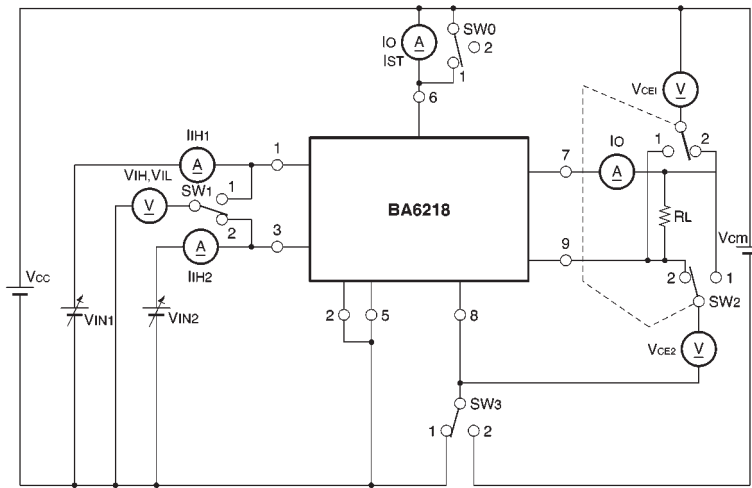


Fig.2

● Application examples

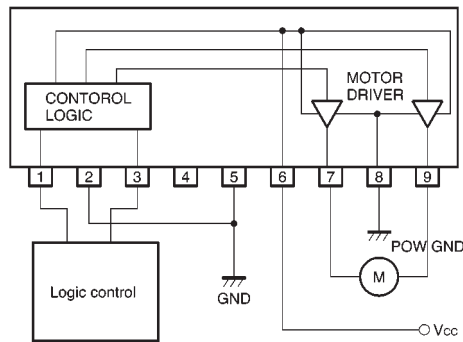


Fig.3

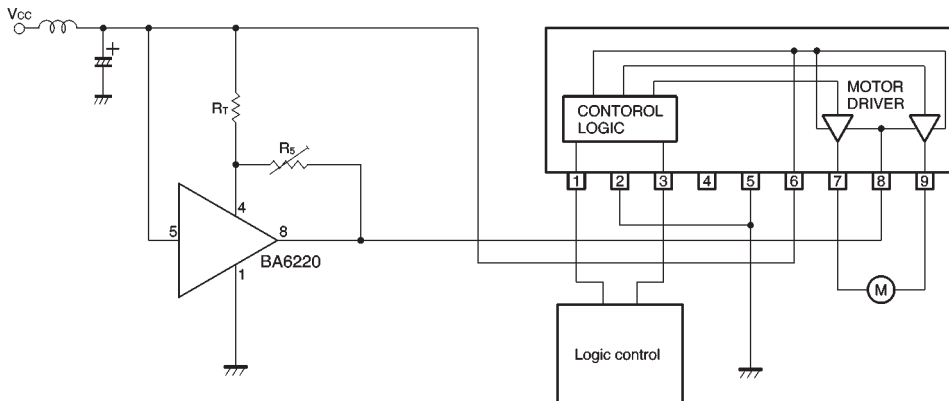


Fig.4

● External dimensions (Units: mm)

