



Chipsmall Limited consists of a professional team with an average of over 10 year of expertise in the distribution of electronic components. Based in Hongkong, we have already established firm and mutual-benefit business relationships with customers from,Europe,America and south Asia,supplying obsolete and hard-to-find components to meet their specific needs.

With the principle of "Quality Parts,Customers Priority,Honest Operation,and Considerate Service",our business mainly focus on the distribution of electronic components. Line cards we deal with include Microchip,ALPS,ROHM,Xilinx,Pulse,ON,Everlight and Freescale. Main products comprise IC,Modules,Potentiometer,IC Socket,Relay,Connector.Our parts cover such applications as commercial,industrial, and automotives areas.

We are looking forward to setting up business relationship with you and hope to provide you with the best service and solution. Let us make a better world for our industry!



Contact us

Tel: +86-755-8981 8866 Fax: +86-755-8427 6832

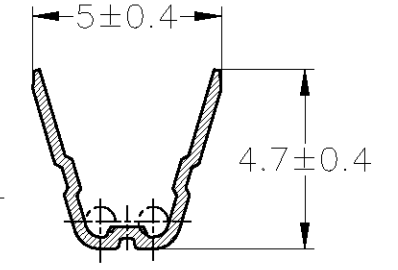
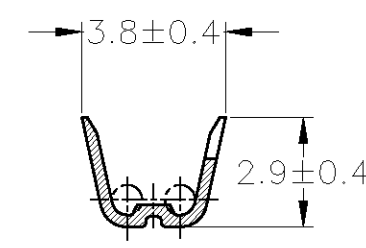
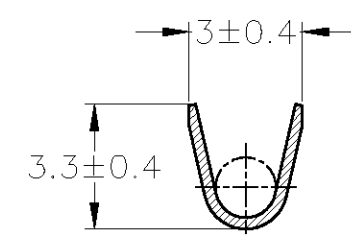
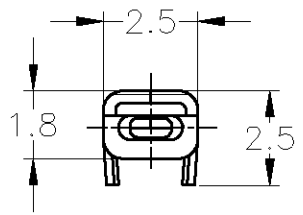
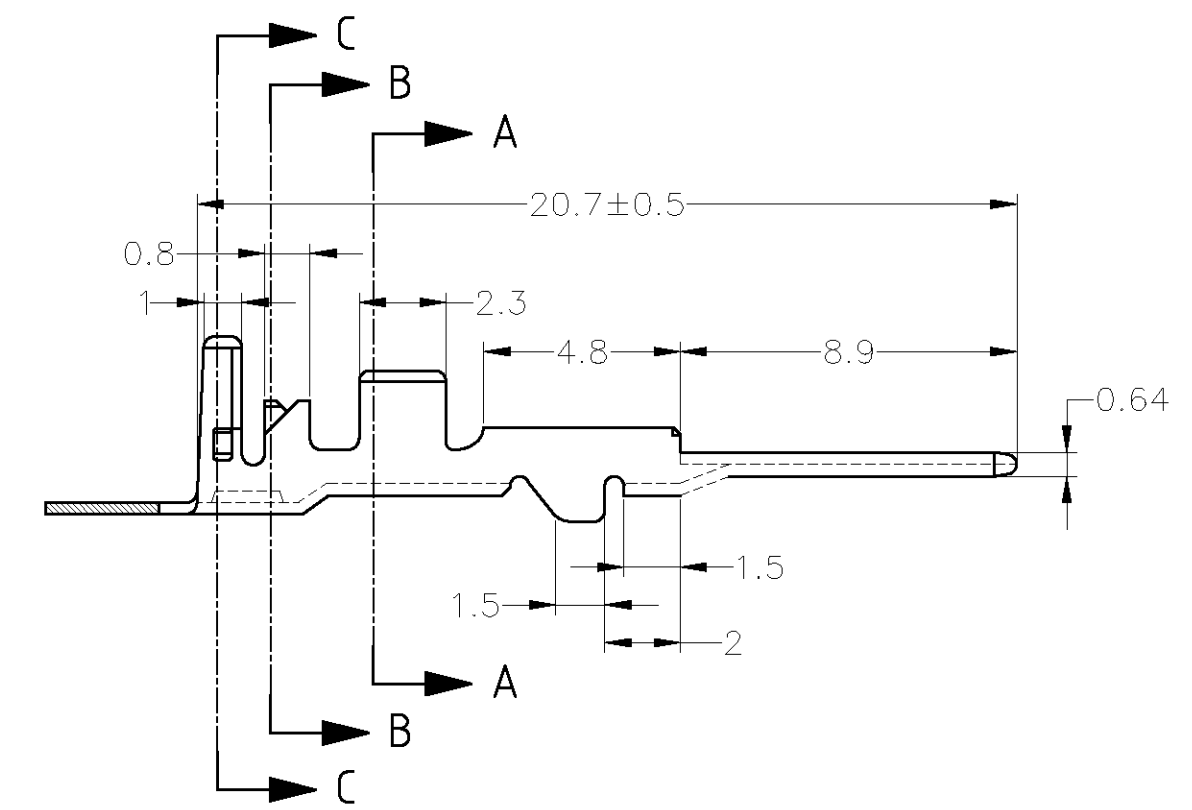
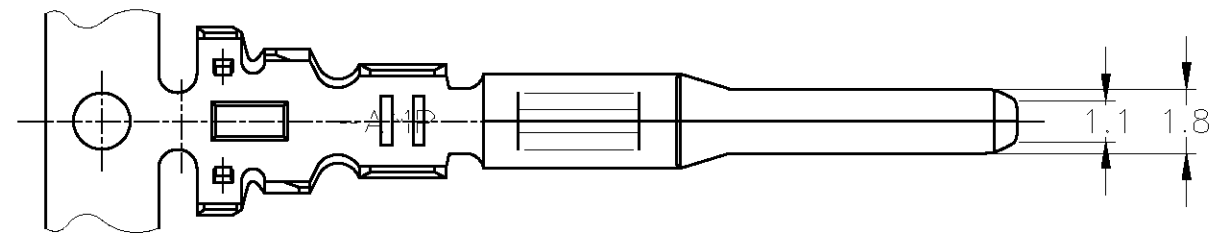
Email & Skype: info@chipsmall.com Web: www.chipsmall.com

Address: A1208, Overseas Decoration Building, #122 Zhenhua RD., Futian, Shenzhen, China



THIS DRAWING IS UNPUBLISHED. RELEASED FOR PUBLICATION
 © COPYRIGHT - By Tyco Electronics JAPAN G.K. ALL RIGHTS RESERVED.

LOC	DIST	REVISIONS					
		P	LTR	DESCRIPTION	DATE	DWN	APVD
J	-	A1	REDRAWN W/CHANGE	ECR-11-010663	15JUN2012	TS	KB



A-A

B-B

C-C

- 1. 嵌合相手端子型番 ; 175095 他
- 1. RECEPTACLE CONTACT ; 175095 etc

TOLERANCES UNLESS OTHERWISE SPECIFIED:

10 ≥	: ±0.2
30 ≥	> 10 : ±0.25
100 ≥	> 30 : ±0.3
ANGLE : ±3°	

WIRE RANGE 0.5~1.25mm ² (AWG#20-#16)	INSULATION DIA. 1.2~2.2mmφ
THIS DRAWING IS A CONTROLLED DOCUMENT.	
DIMENSIONS: mm	TOLERANCES UNLESS OTHERWISE SPECIFIED:
	0 PLC ± -
	1 PLC ± -
	2 PLC ± -
	3 PLC ± -
	4 PLC ± -
	ANGLES ± -
MATERIAL SEE TABLE	FINISH SEE TABLE

錫めっき済み PRE-TINNED	黄銅 板厚0.32 BRASS t=0.32	175208-1
仕上げ FINISH	材料 MATERIAL	型番 PART NUMBER

DWN T.SHINOHARA 15JUN2012	STE TE Connectivity		
CHK K.BETSUI 15JUN2012			
APVD K.BETSUI 15JUN2012	NAME		
PRODUCT SPEC	070 SERIES TAB CONTACT		
APPLICATION SPEC	SIZE	CAGE CODE	DRAWING NO
114-5157	A3	00779	C-175208
WEIGHT 0.3 g	RESTRICTED TO		
CUSTOMER DRAWING	SCALE 5:1	SHEET 1 OF 1	REV A1