



Chipsmall Limited consists of a professional team with an average of over 10 year of expertise in the distribution of electronic components. Based in Hongkong, we have already established firm and mutual-benefit business relationships with customers from,Europe,America and south Asia,supplying obsolete and hard-to-find components to meet their specific needs.

With the principle of “Quality Parts,Customers Priority,Honest Operation,and Considerate Service”,our business mainly focus on the distribution of electronic components. Line cards we deal with include Microchip,ALPS,ROHM,Xilinx,Pulse,ON,Everlight and Freescale. Main products comprise IC,Modules,Potentiometer,IC Socket,Relay,Connector.Our parts cover such applications as commercial,industrial, and automotives areas.

We are looking forward to setting up business relationship with you and hope to provide you with the best service and solution. Let us make a better world for our industry!



Contact us

Tel: +86-755-8981 8866 Fax: +86-755-8427 6832

Email & Skype: info@chipsmall.com Web: www.chipsmall.com

Address: A1208, Overseas Decoration Building, #122 Zhenhua RD., Futian, Shenzhen, China



IoT Development Kit (IDK) Quick Start Guide

Getting Started with the IoT Development Kit from ON Semiconductor

Available Shields

- IDK Baseboard
- Ambient Light Sensor (ALS) Shield
- Touch Shield, PIR Shield, Stepper Motor Shield
- LED Ballast Shield, Wi-Fi® Module
- BLDC Shield, PoE Shield, CAN Shield

Accessories

- Mini-USB Cable
- Cable Assembly

Tools Needed

- IDE Installer
- PC: Windows® PC with minimum 1 USB port, JRE/JDK version 8u101 or later installed. OS: Windows 7, 8 or 10.

Introduction

The IDK baseboard can be connected with different shields depending on the required IoT application. The IDK baseboard allows the user to create many types of IoT nodes and/or gateways depending on which shields are used with the baseboard. The IDK baseboard is configured by connecting the baseboard with the PC and USB cable and using accompanying PC software.

Software Installation

Programming/configuring the IDK requires the ON Semiconductor IDE software. The IDE should be installed on the PC before connecting the hardware to the PC. The Software Suite can be downloaded from www.onsemi.com.

Steps for installation of the IDE are mentioned on page 5 of this Quick Start guide.

Hardware Setup

After the IDE software is installed, hardware can be connected as shown in Figure 1. A single 12 V, 2 A power supply adapter powers the evaluation board (e.g. CUI INC, model SMI24-12....12 V/2 A or any other supporting $V_{OUT} = 10-35$ V). Jumper settings required for the correct operation of the baseboard and the shields are listed in subsequent sections in this document. The shield boards plug directly into the IDK baseboard. The PC connects to the IDK baseboard through a USB cable.

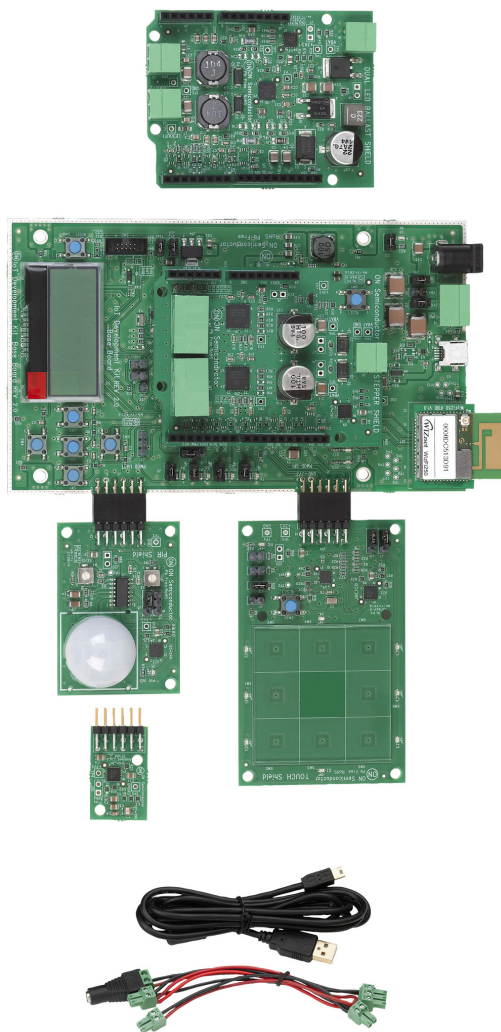
The shields are classified into two broad categories – PMOD & Arduino – based on the interface where the shields are connected to the baseboard. In addition, Arduino-type shields include “Powered” and “Non-Input Power” shields.



ON Semiconductor®

www.onsemi.com

EVAL BOARD USER'S MANUAL



EVBUM2497/D

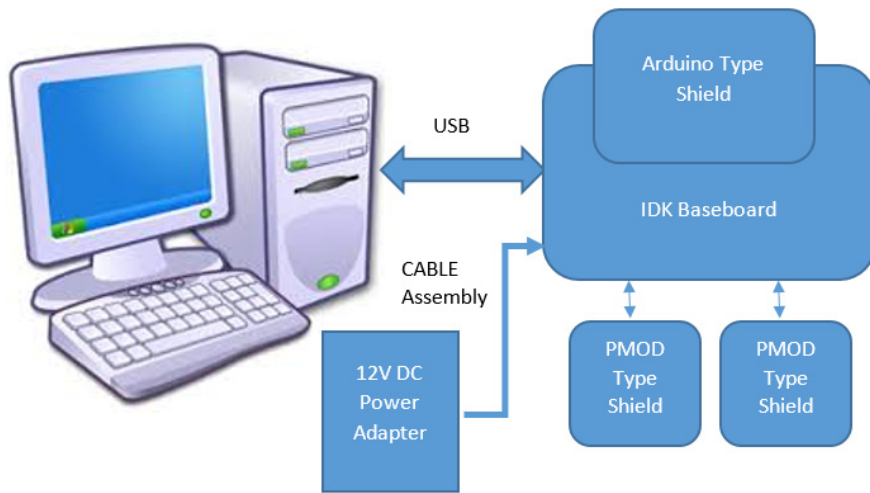


Figure 1. Hardware Setup

APPLICATIONS INFORMATION

Powering Up the IDK

The IDK baseboard can be powered up in stand-alone USB Mode.

Powered shields require additional power supply for its operation. No-Input power shields (e.g. PMOD-type shields) draw power from the baseboard itself.

PMOD type shields: ALS, PIR & Touch (does not require additional power supply).

Arduino powered shields: *Stepper Motor & LED Ballast shields are supplied from external power source.*

IDK Powering Modes

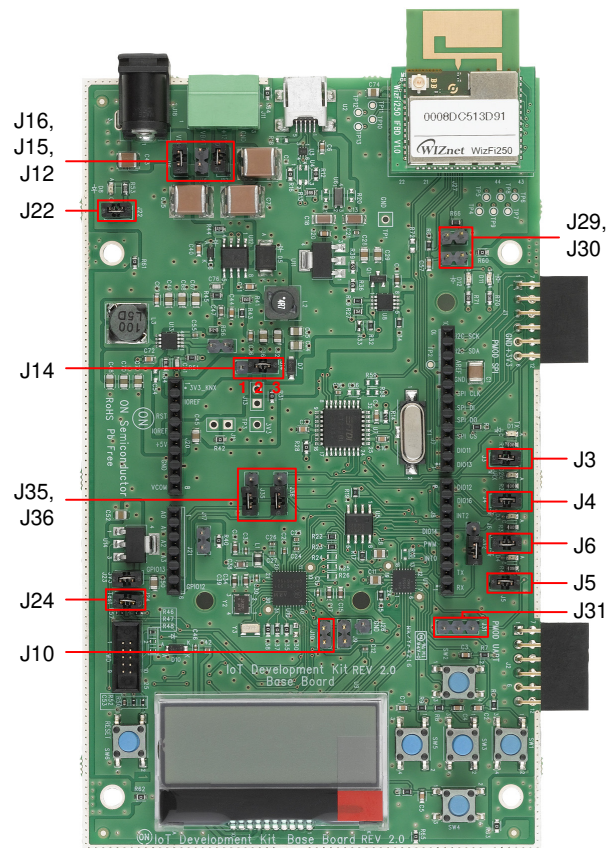
The IDK can be powered in 4 different ways:

1. USB: The IDK baseboard can be powered through USB Mode. Jumper setting: None.
 - CAUTION:** In USB Mode, powered shields like Stepper motor, LED Ballast, etc. need to be connected to an external 12 V supply using the cable assembly provided with the IDK.
2. External 12 V DC power adapter supplied with the IDK: Wall power adapter can be connected to the DC jack J11. Jumper settings: J16:ON, J12: OFF & J15: OFF.
3. External 12 V DC through J11 Connector: 12 V can be provided from an external DC power supply through J11 Pin no.2 (+Ve) & J11 Pin No. 3 (-Ve). Jumper settings: J12: ON, J15: OFF & J16: OFF.
4. External 9–32 V DC through J11 Connector: 12 V can be provided from an external DC power supply through J11 Pin No.2 (+Ve) & J11 Pin No. 3 (-Ve). Jumper settings: J12: OFF, J15: ON & J16: OFF.

Jumper Settings

The default jumper settings are highlighted below for the IDK boards.

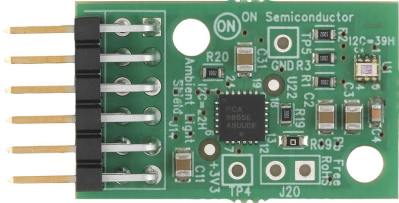
Baseboard Rev2.0



- J32: Pins 2–3 to be shunted for Expander IO1_6 th pin as Wi-Fi Mod Chip select
- J31: Pins 1–2 to be shunted for HR pulse from HRM shield to DIO16
- J31: Pins 2–3 to be shunted for DIO16 to Arduino connector.
- J35, J36: Pins 1–2 to be shunted for expander IO pins to Arduino connectors
- J35, J36: Pins 2–3 to be shunted for expander IO Pins to LEDs

Figure 2. Baseboard Rev 2.0

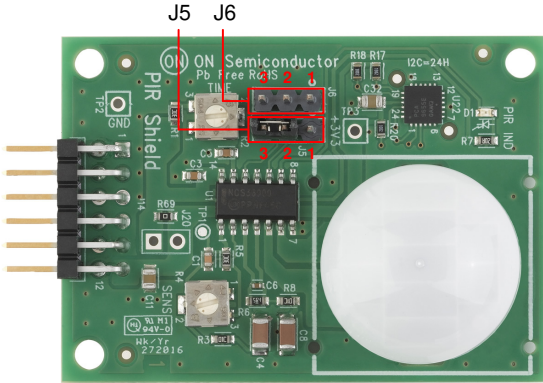
ALS



No Jumper settings needed

Figure 3. ALS

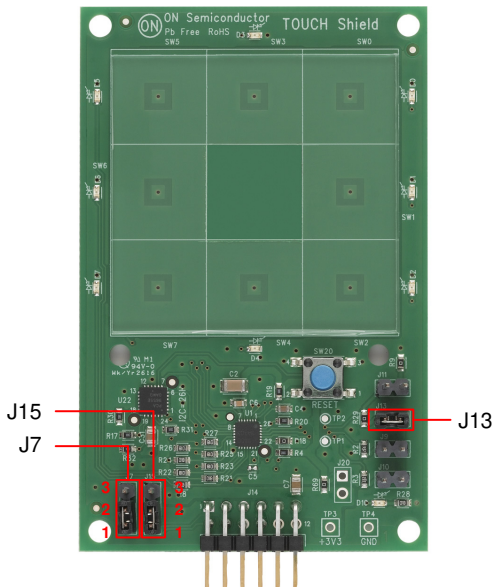
PIR



J6: 2-3 to be shunted
J5: 2-3 to be shunted

Figure 4. PIR

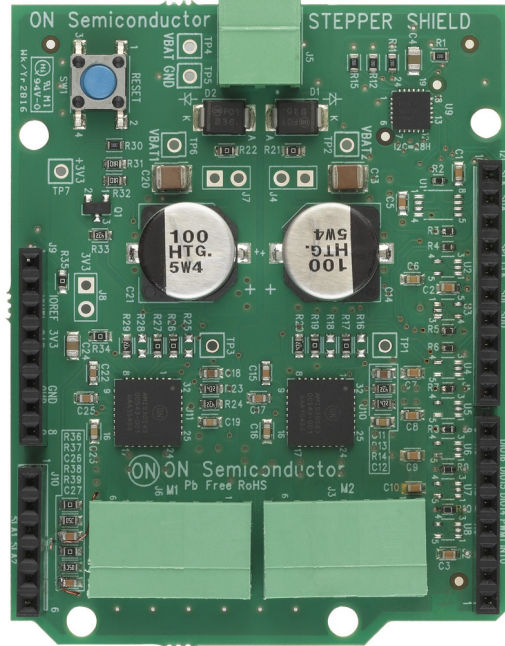
Touch



J7: 1-2 to be shunted for I²C Mode selection
J15: 1-2 to be shunted for I²C Mode selection
J13: 1-2 to be shunted

Figure 5. Touch

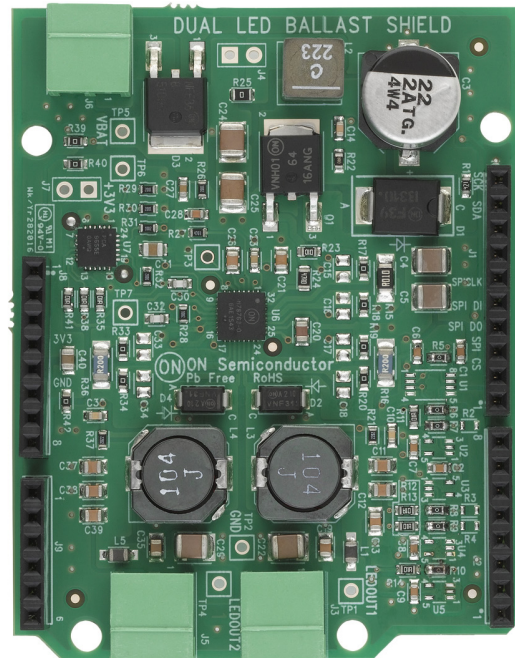
Stepper



No Jumper settings needed

Figure 6. Stepper

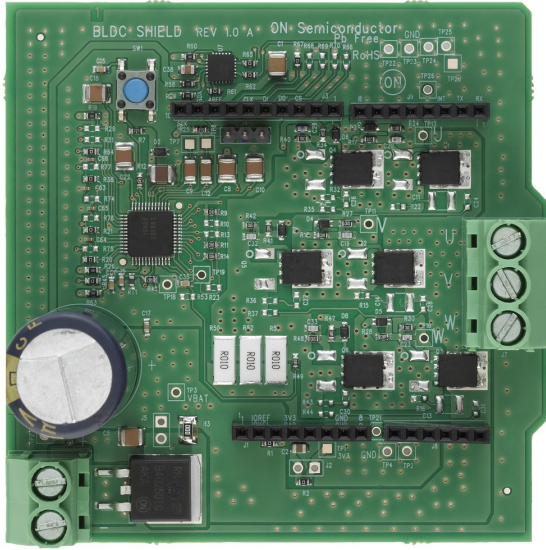
Ballast



No Jumper settings needed

Figure 7. Ballast

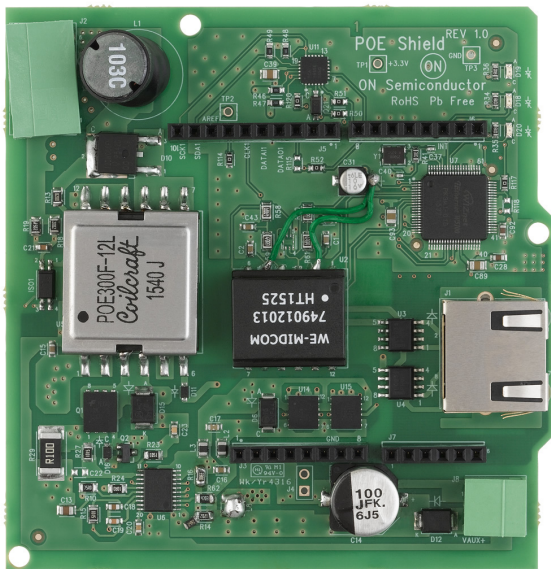
BLDC Shield



No Jumper settings needed

Figure 8. BLDC Shield

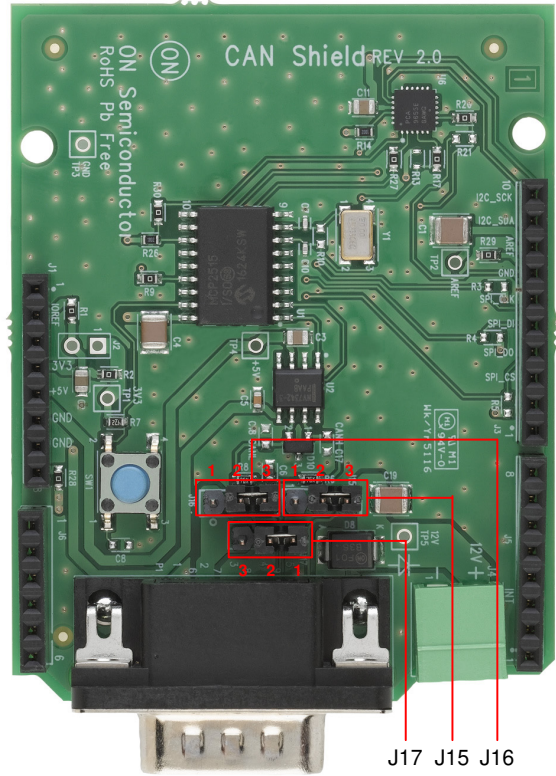
PoE Shield



No Jumper settings needed

Figure 9. PoE Shield

CAN Shield



CAN H – J15, CAN L – 16, GND – J17

Jumper Configuration for DB9 Pins		
	CAN	OBD II
CAN H	Pin 7	Pin 3
CAN L	Pin 2	Pin 5
GND	Pin 3	Pin 2

Figure 10. CAN Shield

SW INSTALLATION STEPS

Java Installation

JRE/JDK version 8u101 or above needs to be installed on the PC: <http://www.oracle.com/technetwork/java/javase/downloads/jdk8-downloads-2133151.html>

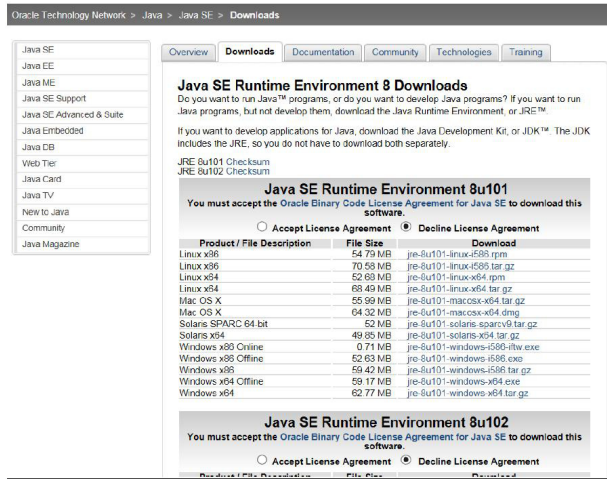


Figure 11. Java

GNUToolchain

The GNU cross compiler needs to be installed to compile the IDK application. Double click on the GNUToolchain.exe to install the cross compiler. *Internet connection is mandatory to install the cross compiler.*

Name	Date modified	Type	Size
Gnutoolchain.exe		Application	163 KB
IDK_Installer_x86.exe		Application	145,726 KB
IDK_Installer_x86_64.exe		Application	145,854 KB

Figure 12. GNU Toolchain Installation (1/5)

Select the “GNU Toolchain” checkbox and click Next.

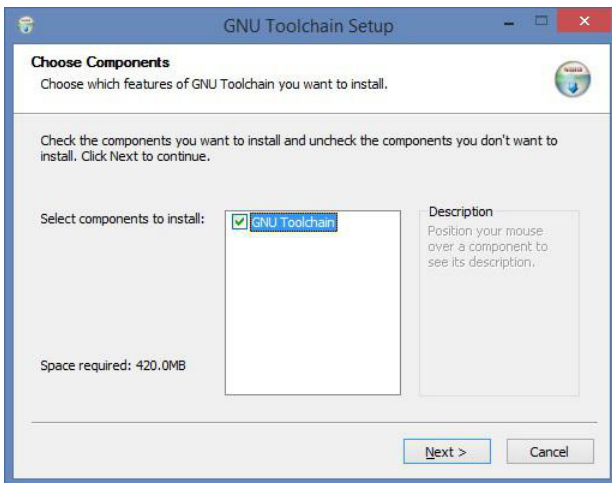


Figure 13. GNU Toolchain Installation (2/5)

Select Destination folder and click Next. *It is recommended to not change installation path.*

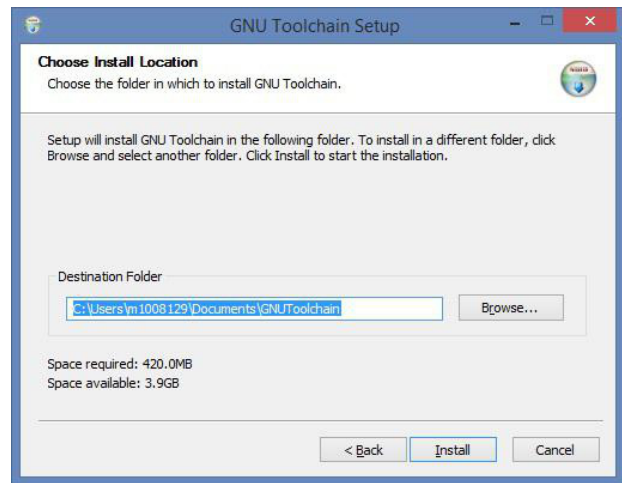


Figure 14. GNU Toolchain Installation (3/5)

Installer automatically downloads toolchain and installs.

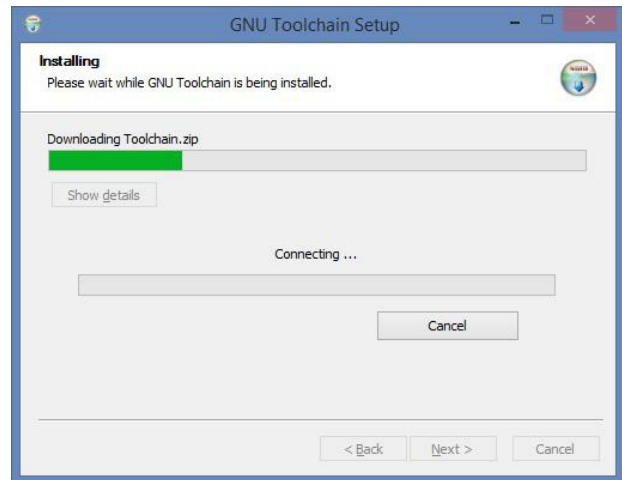


Figure 15. GNU Toolchain Installation (4/5)

GNU Tool chain installation complete.

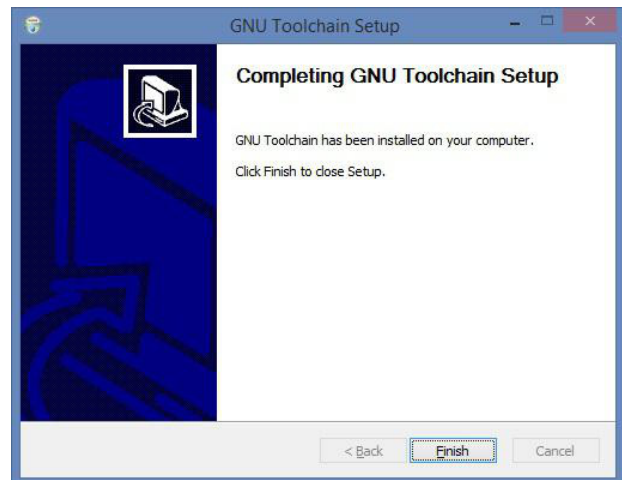


Figure 16. GNU Toolchain Installation (5/5)

IDK Installation

Double click on the installer downloaded from ON Semiconductor.

For 32 bit machines, install IDK Installer x86.exe. For 64 bit machines, install IDK Installer x86 64.exe



Figure 17. IDK Installation (1/5)

Read the license, check the box and click Next.

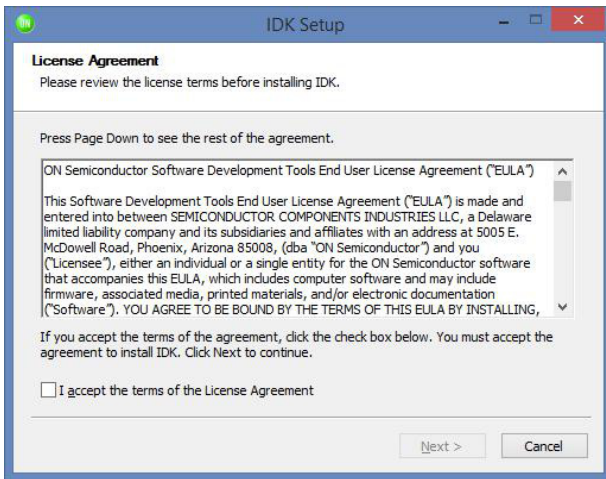


Figure 18. IDK Installation (2/5)

Choose the destination directory to install the IDK. *It is recommended to have IDK installed under C:\OnSemiconductor or D:\OnSemiconductor.*

If a previous workspace is being retained, then make sure that metadata folder inside Workspace directory is deleted.

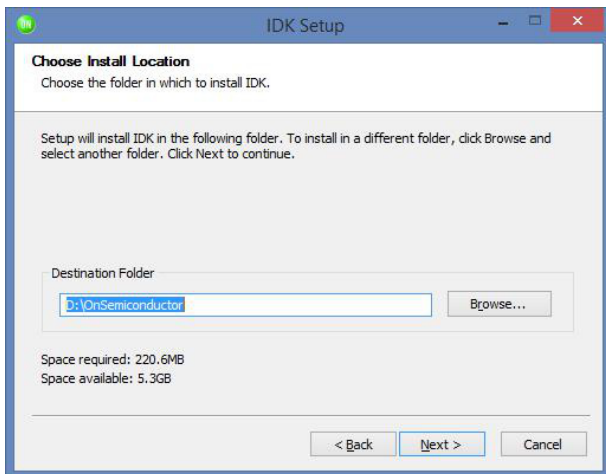


Figure 19. IDK Installation (3/5)

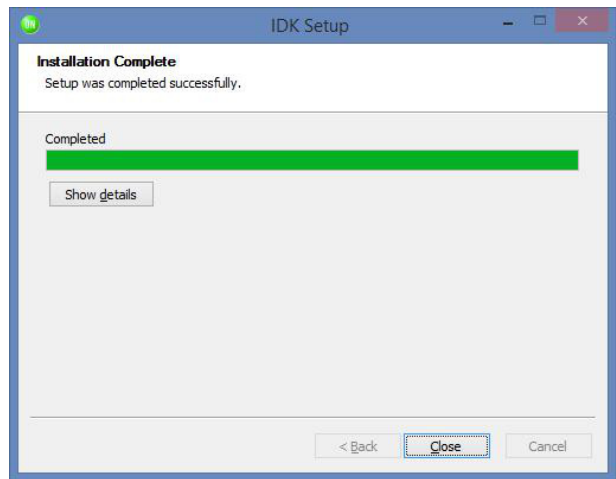


Figure 20. IDK Installation (4/5)

Once in is successfully installed, a shortcut will be created on the desktop.

Double click on the IDK shortcut on the desktop to launch the IDK IDE.

The ON Semiconductor splash screen will launch, followed by the Welcome Screen.

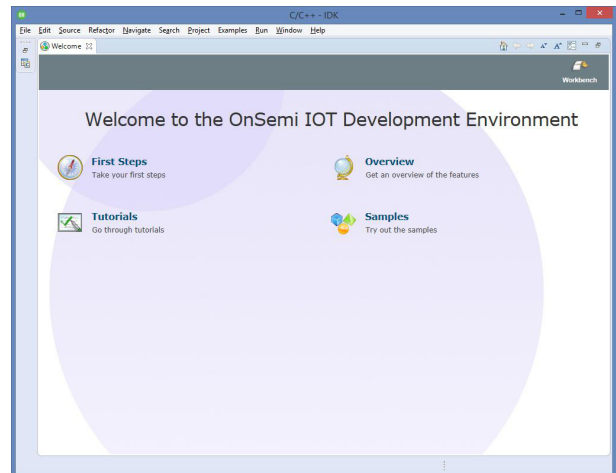



Figure 21. IDK Installation (5/5)

Windows is a registered trademark of Microsoft Corporation. Wi-Fi is a registered trademark of Wi-Fi Alliance. All other brand names and product names appearing in this document are registered trademarks or trademarks of their respective holders.

ON Semiconductor and  are trademarks of Semiconductor Components Industries, LLC dba ON Semiconductor or its subsidiaries in the United States and/or other countries. ON Semiconductor owns the rights to a number of patents, trademarks, copyrights, trade secrets, and other intellectual property. A listing of ON Semiconductor's product/patent coverage may be accessed at www.onsemi.com/site/pdf/Patent-Marking.pdf. ON Semiconductor reserves the right to make changes without further notice to any products herein. ON Semiconductor makes no warranty, representation or guarantee regarding the suitability of its products for any particular purpose, nor does ON Semiconductor assume any liability arising out of the application or use of any product or circuit, and specifically disclaims any and all liability, including without limitation special, consequential or incidental damages. Buyer is responsible for its products and applications using ON Semiconductor products, including compliance with all laws, regulations and safety requirements or standards, regardless of any support or applications information provided by ON Semiconductor. "Typical" parameters which may be provided in ON Semiconductor data sheets and/or specifications can and do vary in different applications and actual performance may vary over time. All operating parameters, including "Typicals" must be validated for each customer application by customer's technical experts. ON Semiconductor does not convey any license under its patent rights nor the rights of others. ON Semiconductor products are not designed, intended, or authorized for use as a critical component in life support systems or any FDA Class 3 medical devices or medical devices with a same or similar classification in a foreign jurisdiction or any devices intended for implantation in the human body. Should Buyer purchase or use ON Semiconductor products for any such unintended or unauthorized application, Buyer shall indemnify and hold ON Semiconductor and its officers, employees, subsidiaries, affiliates, and distributors harmless against all claims, costs, damages, and expenses, and reasonable attorney fees arising out of, directly or indirectly, any claim of personal injury or death associated with such unintended or unauthorized use, even if such claim alleges that ON Semiconductor was negligent regarding the design or manufacture of the part. ON Semiconductor is an Equal Opportunity/Affirmative Action Employer. This literature is subject to all applicable copyright laws and is not for resale in any manner.

PUBLICATION ORDERING INFORMATION

LITERATURE FULFILLMENT:

Literature Distribution Center for ON Semiconductor
19521 E. 32nd Pkwy, Aurora, Colorado 80011 USA
Phone: 303-675-2175 or 800-344-3860 Toll Free USA/Canada
Fax: 303-675-2176 or 800-344-3867 Toll Free USA/Canada
Email: orderlit@onsemi.com

N. American Technical Support: 800-282-9855 Toll Free
USA/Canada
Europe, Middle East and Africa Technical Support:
Phone: 421 33 790 2910
Japan Customer Focus Center
Phone: 81-3-5817-1050

ON Semiconductor Website: www.onsemi.com
Order Literature: <http://www.onsemi.com/orderlit>

For additional information, please contact your local Sales Representative