



Chipsmall Limited consists of a professional team with an average of over 10 year of expertise in the distribution of electronic components. Based in Hongkong, we have already established firm and mutual-benefit business relationships with customers from,Europe,America and south Asia,supplying obsolete and hard-to-find components to meet their specific needs.

With the principle of “Quality Parts,Customers Priority,Honest Operation,and Considerate Service”,our business mainly focus on the distribution of electronic components. Line cards we deal with include Microchip,ALPS,ROHM,Xilinx,Pulse,ON,Everlight and Freescale. Main products comprise IC,Modules,Potentiometer,IC Socket,Relay,Connector.Our parts cover such applications as commercial,industrial, and automotives areas.

We are looking forward to setting up business relationship with you and hope to provide you with the best service and solution. Let us make a better world for our industry!



## Contact us

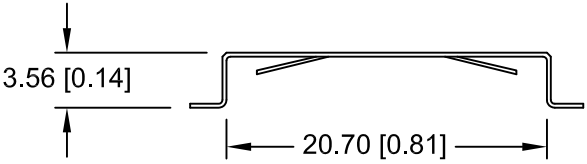
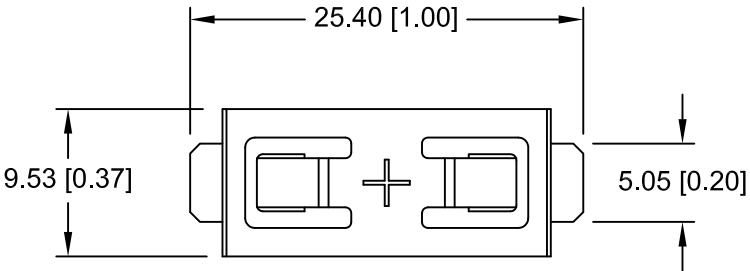
Tel: +86-755-8981 8866 Fax: +86-755-8427 6832

Email & Skype: info@chipsmall.com Web: www.chipsmall.com

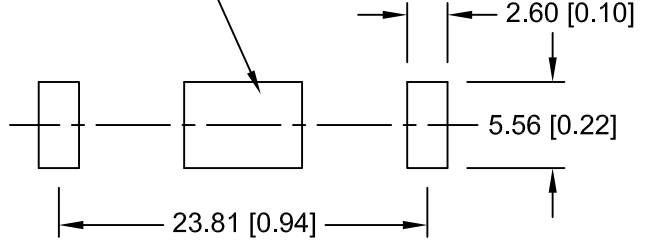
Address: A1208, Overseas Decoration Building, #122 Zhenhua RD., Futian, Shenzhen, China



Date	SYM	REVISION RECORD	AUTH	DR.	CK.
08/14/15	C	Removed Dim. 1.40	T.B.	B.S.	
12/11/15	D	Dim. 9.53 was 6.99	T.B.	B.S.	
12/16/16	E	Added Battery Table	T.B.	B.S.	
02/03/17	F	Added Nickel Or Gold Plated for negative pad	T.B.	B.S.	



NEGATIVE CONTACT PAD  
NICKEL OR GOLD PLATED




PCB LAYOUT

NOTES:

- \* Material- 0.25mm Phosphor Bronze, Nickle plated.
- \* Vibration test: 10-50-10 hz swept in 60 seconds  
x,y,z direction: 1 hour each direction
- \* Result: no dislodgement of the cell or damage  
no discontinuity over 10 micro-seconds
- \* Shock test: half sine wave acceleration 150g.  
6 ms 1 shock pulses each direction per axis
- \* Result: no evidence of physical damage
- \* Drop Test: Mounted on board and dropped 1 time per direction  
from 1m high to wooden floor
- \* Result: No dislodgement of the cell, No damage to the holders
- \* Approximate weight: 0.48g

\* ROHS 2 COMPLIANT

CELL SIZE	RETAINS BATTERY NUMBERS
20mm	BR2032, CR2032, DL2032, LIR2032, BR2025, CR2025, DL2025, LIR2025

Tolerance (Except as noted)	 <b>Memory Protection Devices, Inc</b> 200 Broad Hollow Road, Farmingdale, New York 11735		
		decimal ±.5 (.020)	Scale
Fractional ± .8 (.030)	Title CR2032 BATTERY STRAP, SMT	Approved By T.B.	
Angular ± 3°	Date 02/03/17	Drawing Number BC-2003	