



Chipsmall Limited consists of a professional team with an average of over 10 year of expertise in the distribution of electronic components. Based in Hongkong, we have already established firm and mutual-benefit business relationships with customers from,Europe,America and south Asia,supplying obsolete and hard-to-find components to meet their specific needs.

With the principle of "Quality Parts,Customers Priority,Honest Operation,and Considerate Service",our business mainly focus on the distribution of electronic components. Line cards we deal with include Microchip,ALPS,ROHM,Xilinx,Pulse,ON,Everlight and Freescale. Main products comprise IC,Modules,Potentiometer,IC Socket,Relay,Connector.Our parts cover such applications as commercial,industrial, and automotives areas.

We are looking forward to setting up business relationship with you and hope to provide you with the best service and solution. Let us make a better world for our industry!



Contact us

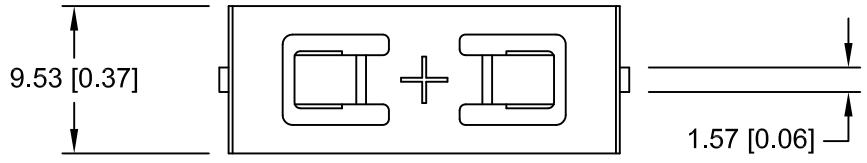
Tel: +86-755-8981 8866 Fax: +86-755-8427 6832

Email & Skype: info@chipsmall.com Web: www.chipsmall.com

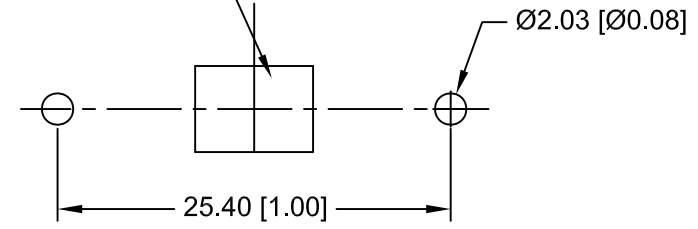
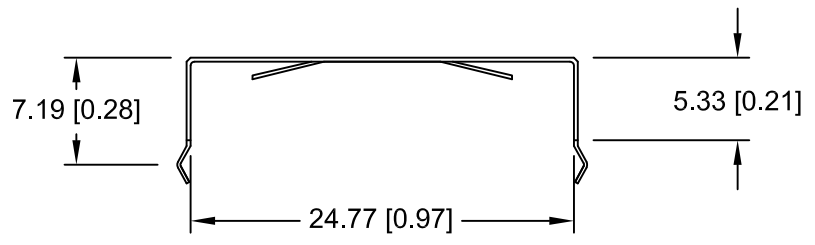
Address: A1208, Overseas Decoration Building, #122 Zhenhua RD., Futian, Shenzhen, China



Date	SYM	REVISION RECORD	AUTH	DR.	CK.
08/12/16	A	DIM. 9.52 WAS 8.26 DIM. 1.62 WAS 1.40 CHANGED DIRECTION OF POSITIVE CONTACT TABS	T.B.	B.S.	
08/22/16	B	UPDATED NOTE FOR NEGATIVE CONTACT	T.B.	B.S.	
09/02/16	C	ADDED WEIGHT OF THE PART	T.B.	B.S.	
12/09/16	D	ADDED TABLE OF BATTERIES	T.B.	B.S.	



NEGATIVE CONTACT PAD
NICKEL OR GOLD PLATED
RECOMMENDED




PCB LAYOUT

NOTES:

- MATERIAL:
0.25mm PHOSPHOR BRONZE, NICKEL PLATED.
Weight: 0.65gram
- ROHS 2 COMPLIANT

CELL SIZE	RETAINS BATTERY NUMBERS
24mm	BR2450, CR2450, DL2450, LIR2450

Tolerance (Except as noted)	 Memory Protection Devices, Inc 200 Broad Hollow Road, Farmingdale, New York 11735	Scale	Drawn By B.S.
			Approved By T.B.
decimal ±.5 (.020)	Title CR2450 BATTERY STRAP, PC		
Fractional ± .8 (.030)	Date 12/09/16	Drawing Number BC-2007	
Angular ± 3°			