



Chipsmall Limited consists of a professional team with an average of over 10 year of expertise in the distribution of electronic components. Based in Hongkong, we have already established firm and mutual-benefit business relationships with customers from,Europe,America and south Asia,supplying obsolete and hard-to-find components to meet their specific needs.

With the principle of “Quality Parts,Customers Priority,Honest Operation,and Considerate Service”,our business mainly focus on the distribution of electronic components. Line cards we deal with include Microchip,ALPS,ROHM,Xilinx,Pulse,ON,Everlight and Freescale. Main products comprise IC,Modules,Potentiometer,IC Socket,Relay,Connector.Our parts cover such applications as commercial,industrial, and automotives areas.

We are looking forward to setting up business relationship with you and hope to provide you with the best service and solution. Let us make a better world for our industry!



## Contact us

Tel: +86-755-8981 8866 Fax: +86-755-8427 6832

Email & Skype: info@chipsmall.com Web: www.chipsmall.com

Address: A1208, Overseas Decoration Building, #122 Zhenhua RD., Futian, Shenzhen, China



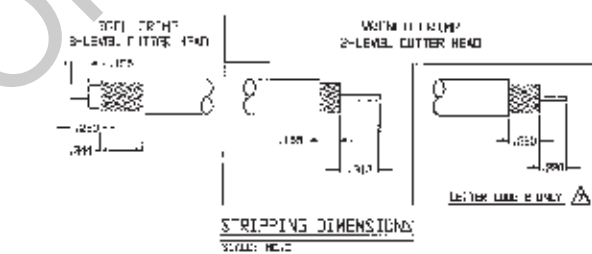
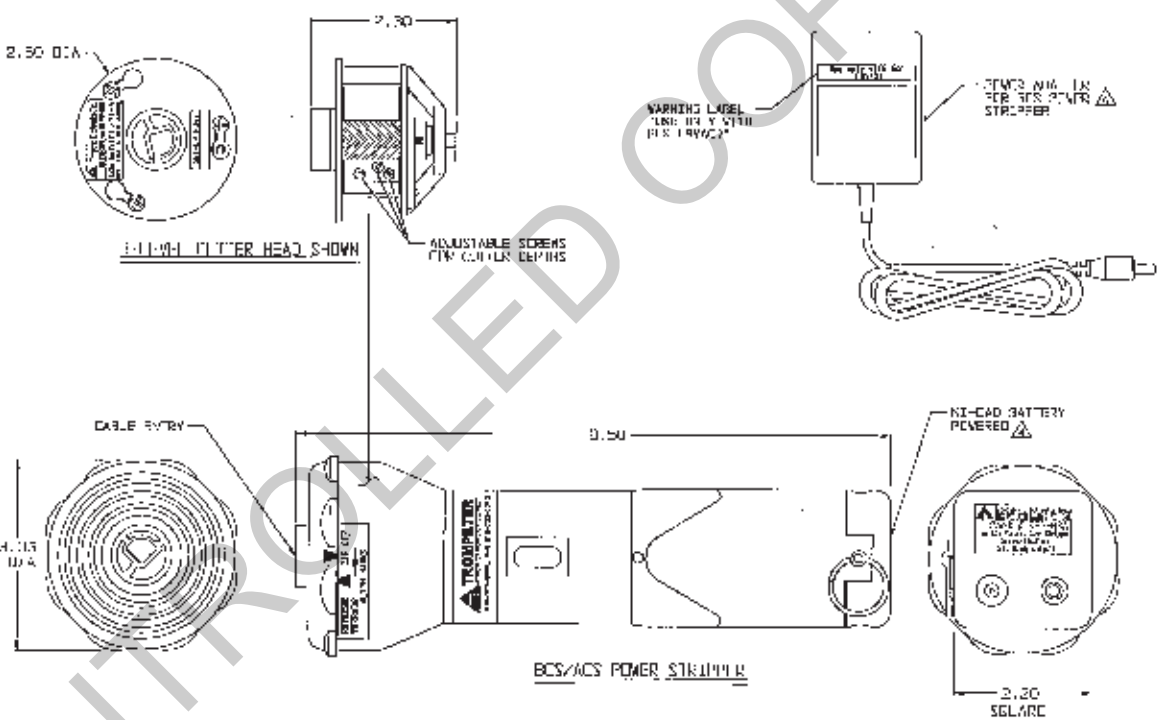
CABLE TYPE	CABLE DIMENSIONS (DIA X LENGTH)	CABLE TYPES	REFERENCE CABLE CODES	
			100	500
A	.070 / .110	RS-174, RS-170, RS-215, RS-178, RS-753 00001	-100	-500
I	.110 / .185	RS-100, AT&T 7225, RS-100, RS-101, RS-102, RS-103, RS-104	-100	-500
B	.150 / .210	RS-100-2, RS-100, RS-101, RS-102, RS-103, RS-104, RS-105, RS-106, RS-107, RS-108	-101	-501
C	.150 / .230	RS-100, RS-101, RS-102, RS-103, RS-104	-101	-501
O	.235 / .270	RS-100-2, RS-100, RS-101, RS-102, RS-103, RS-104, RS-105, RS-106, RS-107, RS-108	-101	-501
F1	.271 / .305	RS-100, RS-101, RS-102, RS-103, RS-104, RS-105, RS-106, RS-107, RS-108	-101	-501
F2	.271 / .305	RS-100, RS-101, RS-102, RS-103, RS-104, RS-105, RS-106, RS-107, RS-108	-101	-501
F3	.271 / .305	RS-100, RS-101, RS-102, RS-103, RS-104, RS-105, RS-106, RS-107, RS-108	-101	-501
F4	.271 / .305	RS-100, RS-101, RS-102, RS-103, RS-104, RS-105, RS-106, RS-107, RS-108	-101	-501

PART NO.		DESCRIPTION	
1	100-100	100-100	100-100
2	100-100	100-100	100-100
3	100-100	100-100	100-100
4	100-100	100-100	100-100

REVISIONS		DATE	BY
REV	DESCRIPTION		
1	U-SLE P11111		
2	REVISED PER ECU 13114	6/10/06	MS

RED INDICATES ORIGINAL

- SEE SPECIAL STRIPPING DIMENSIONS
6. EACH ITEM MAY BE SOLD SEPARATELY
5. EACH KIT IS SUPPLIED WITH A 12.5 X 0.5 X 0.4 CARRYING CASE AND USER INSTRUCTIONS
- INDIVIDUAL BATTERY OR OPTIMAL POWER SOURCE MAY BE ORDERED AS SUPPLY FOR TABLE 2
- EXAMPLE OF CABLE TYPE NO.
- 1115 / C24T 3 A
- 1115 - CABLE CANNUL LETTER CODE (SEE TABLE 1)
  - 3 - 3-LEVEL FOR TOOL CODE
  - 2 - 2-LEVEL FOR CABLE CODE
- CUTTER HEAD BASIC PART NO.
- POWER STRIPPER KIT:
- BLS - NI-CAD BATTERY WITH AC & DC CHARGER FOR NORTH & SOUTH AMERICA
  - BCS - NI-CAD BATTERY WITH AC & DC CHARGER AND RAPID CHARGER FOR NORTH & SOUTH AMERICA
  - BFS-EU - NI-CAD BATTERY WITH AC & DC CHARGER FOR EUROPE
  - BFS-UK - NI-CAD BATTERY WITH AC & DC CHARGER FOR UNITED KINGDOM
  - ACS - AC POWER CONVERTER FOR NORTH & SOUTH AMERICA
  - ACS-EU - AC POWER CONVERTER FOR EUROPE
  - ACS-UK - AC POWER CONVERTER FOR UNITED KINGDOM
- PORTABLE HAND HELD, POWERED CORD FREE STRIPPER KIT WITH AND WITH-OUT CABLE HEADS, WITH OPTIONAL POWER SOURCES, SEE TABLE 2
1. ALL DIMENSIONS IN INCHES



TROMPETER		RF connectivity	
MODEL	ACS	SCALE	KPS
DATE	6/10/06	REV	A 14949
DATE	6/10/06	REV	10-1E-03
DATE	6/10/06	REV	10-1E-03
DATE	6/10/06	REV	10-1E-03