



Chipsmall Limited consists of a professional team with an average of over 10 year of expertise in the distribution of electronic components. Based in Hongkong, we have already established firm and mutual-benefit business relationships with customers from,Europe,America and south Asia,supplying obsolete and hard-to-find components to meet their specific needs.

With the principle of “Quality Parts,Customers Priority,Honest Operation,and Considerate Service”,our business mainly focus on the distribution of electronic components. Line cards we deal with include Microchip,ALPS,ROHM,Xilinx,Pulse,ON,Everlight and Freescale. Main products comprise IC,Modules,Potentiometer,IC Socket,Relay,Connector.Our parts cover such applications as commercial,industrial, and automotives areas.

We are looking forward to setting up business relationship with you and hope to provide you with the best service and solution. Let us make a better world for our industry!



Contact us

Tel: +86-755-8981 8866 Fax: +86-755-8427 6832

Email & Skype: info@chipsmall.com Web: www.chipsmall.com

Address: A1208, Overseas Decoration Building, #122 Zhenhua RD., Futian, Shenzhen, China



High Side Switch ICs 2ch

BD651xF Series BD20xxAFJ Series

●General Description

This High side switch IC for Universal Serial Bus (USB) is a high side switch that features over current protection used in power supply line of USB. Its switch unit has two channels of N-channel power MOSFET which are capable of current equal to 500mA for each channel. Moreover, it features over current detection, thermal shutdown, under voltage lockout and soft start circuit that are all built in.

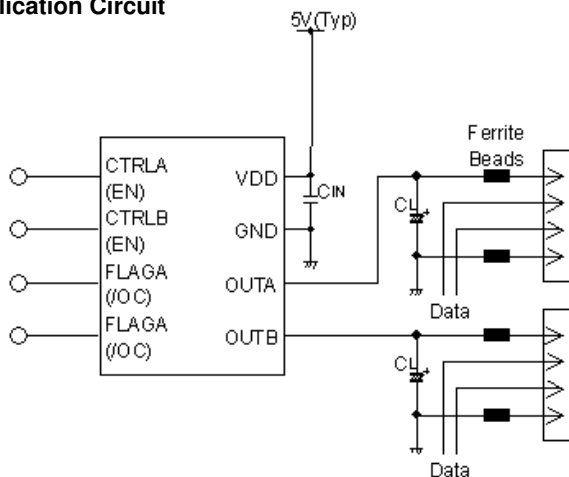
●Features

- Dual N-MOS high side switch
- Continuous current load 0.5A
- Control input logic
Active-Low
Active-High
- Soft start circuit
- Over current detection
- Thermal shutdown
- Under voltage lockout
- Open drain error flag output
- Reverse-current protection when switch off
- Flag output delay filter built in

●Applications

USB hub in consumer appliances, Car accessory, PC, PC peripheral equipment, and so on.

●Typical Application Circuit

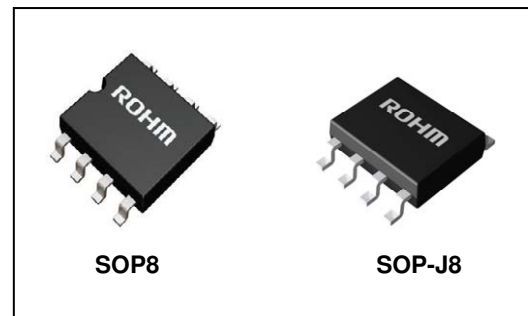


●Key Specifications

- Input voltage range:
 - BD651xF Series 3.0V to 5.5V
 - BD20xxAFJ Series 2.7V to 5.5V
- ON resistance :
 - BD6512F/BD6513F 100mΩ or 120mΩ(Typ.)
 - BD6516F/BD6517F 110mΩ or 140mΩ(Typ.)
 - BD2042FAFJ/BD2052AFJ 100 mΩ(Typ.)
- Over current threshold:
 - BD6512F/BD6513F 1.25A min., 2.2A max.
 - BD6516F/BD6517F 1.2A min., 2.5A max.
 - BD2042FAFJ/BD2052AFJ 0.7A min., 1.8A max.
- Standby current:
 - BD20xxAFJ Series 0.01μA (Typ.)
- Operating temperature range:
 - BD651xF Series -25°C to +85°C
 - BD20xxAFJ Series -40°C to +85°C

●Packages

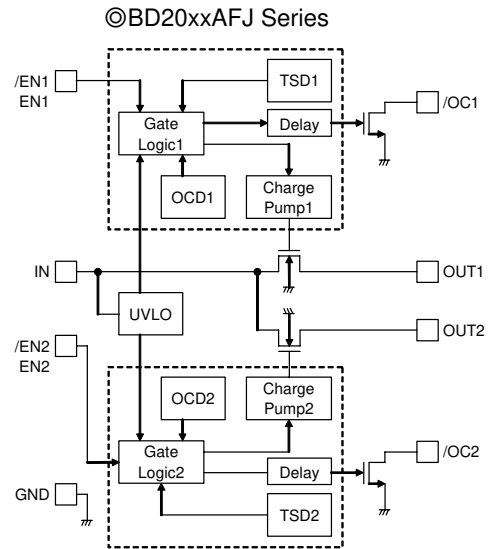
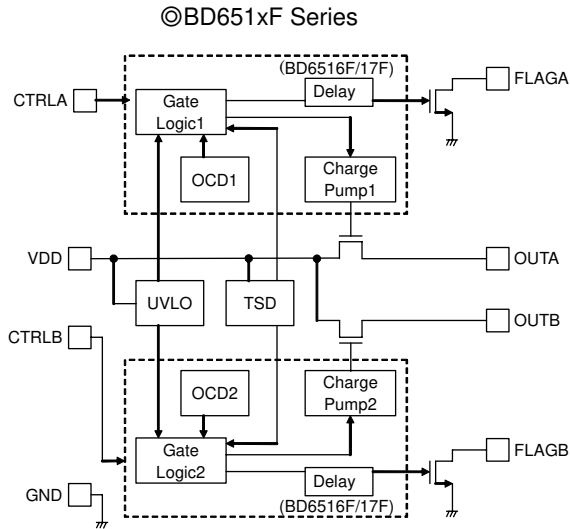
- SOP8 W(Typ.) D(Typ.) H (Max.)
5.00mm x 6.20mm x 1.71mm
- SOP-J8 4.90mm x 6.00mm x 1.65mm



●Lineup

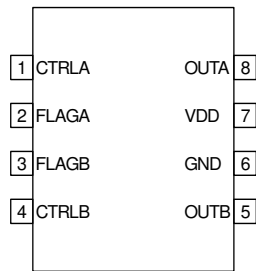
Over current threshold			Control input logic	Package	Orderable Part Number
Min.	Typ.	Max.			
1.25A	1.65A	2.2A	High	SOP8	BD6512F – E2
1.25A	1.65A	2.2A	Low		BD6513F – E2
1.2A	1.65A	2.5A	High		BD6516F – E2
1.2A	1.65A	2.5A	Low		BD6517F – E2
0.7A	1.0A	1.8A	High	SOP-J8	BD2042AFJ – E2
0.7A	1.0A	1.8A	Low		BD2052AFJ – E2

●Block Diagrams

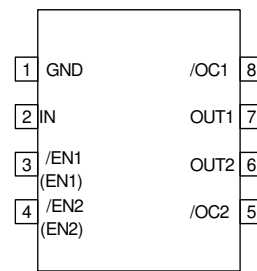


●Pin Configurations

BD651xF Series
TOP VIEW



BD20xxAFJ Series
TOP VIEW



●Pin Descriptions

©BD651xF Series

Pin No.	Symbol	I / O	Pin function
1, 4	CTRLA CTRLB	I	Enable input. Switch ON at Low level. (BD6513F/BD6517F) Low level input < 0.7V. Switch ON at High level. (BD6512F/BD6516F) High level input > 2.5V.
2, 3	FLAGA FLAGB	O	Error flag output. Low at over current, thermal shutdown. Open drain output.
5, 8	OUTB OUTA	O	Switch output.
6	GND	I	Ground.
7	VDD	I	Power supply input. Input terminal of the switch and power supply of internal circuit.

©BD20xxAFJ Series

Pin No.	Symbol	I / O	Pin function
1	GND	I	Ground.
2	IN	I	Power supply input. Input terminal of the switch and power supply of internal circuit.
3, 4	/EN, EN	I	Enable input. Switch on at Low level. (BD2042AFJ) Low level input < 0.8V Switch On at High level. (BD2052AFJ) High level input > 2.0V. .
5, 8	/OC	O	Error flag output. Low at over current, thermal shutdown. Open drain output.
6, 7	OUT	O	Switch output.

● Absolute Maximum Ratings

◎BD651xF Series

Parameter	Symbol	Ratings	Unit
Input voltage	V _{DD}	-0.3 to 6.0	V
CTRL voltage	V _{CTRL}	-0.3 to V _{DD} +0.3	V
Flag voltage	V _{FLAG}	-0.3 to 6.0	V
Output voltage	V _{OUT}	-0.3 to V _{DD} +0.3 (BD6512F/ BD6513F)	V
		-0.3 to 6.0 (BD6516F/ BD6517F)	V
Storage temperature	T _{STG}	-55 to 150	°C
Power dissipation *1	P _d	560 *1	mW

◎BD20xxAFJ Series

Parameter	Symbol	Ratings	Unit
Input voltage	V _{IN}	-0.3 to 6.0	V
EN,/EN voltage	V _{EN} , V _{/EN}	-0.3 to 6.0	V
/OC voltage	V _{/OC}	-0.3 to 6.0	V
/OC current	I _{S/OC}	10	mA
OUT voltage	V _{OUT}	-0.3 to 6.0	V
Storage temperature	T _{STG}	-55 to 150	°C
Power dissipation *1	P _d	560*1	mW

*1 This value decreases by 4.48mW/°C above Ta=25°C.

● Recommended Operation Ratings

◎BD651xF Series

Parameter	Symbol	Ratings	Unit
Input voltage	V _{DD}	3.0 to 5.5	V
Operation temperature	T _{OPR}	-25 to 85	°C
Continuous output current	I _{LO}	0 to 500	mA

◎BD20xxAFJ Series

Parameter	Symbol	Ratings	Unit
Input voltage	V _{IN}	2.7 to 5.5	V
Operation temperature	T _{OPR}	-40 to 85	°C
Continuous output current	I _{LO}	0 to 500	mA

● Electrical Characteristics

©BD6512F/BD6513F ($V_{DD}=5V$, $T_a=25^{\circ}C$, unless otherwise specified.)

Parameter	Symbol	Limits			Unit	Condition
		Min.	Typ.	Max.		
Operating current	I _{DD}	-	85	120	μA	V _{CTRL} =5V(BD6512F), 0V(BD6513F) OUT=OPEN
		-	0.01	2	μA	V _{CTRL} =0V(BD6512F), 5V(BD6513F) OUT=OPEN
Control input voltage	V _{CTRL}	-	-	0.7	V	CTRL Low Level Input
		2.5	-	-	V	CTRL High Level Input
Control input current	I _{CTRL}	-1	0.01	1	μA	V _{CTRL} =0V or 5V
On resistance	R _{ON}	-	100	130	mΩ	V _{DD} =5V, I _{OUT} =500mA
		-	120	160	mΩ	V _{DD} =3.3V, I _{OUT} =500mA
Turn on delay	T _{RD}	100	600	2000	μs	R _L =10Ω
Turn on rise time	T _R	200	1500	6000	μs	R _L =10Ω
Turn off delay	T _{FD}	-	3	20	μs	R _L =10Ω
Turn off fall time	T _F	-	1	20	μs	R _L =10Ω
UVLO threshold voltage	V _{UVLOH}	2.3	2.5	2.7	V	V _{DD} increasing
	V _{UVLOL}	2.1	2.3	2.5	V	V _{DD} decreasing
Thermal shutdown threshold	T _{TS}	-	135	-	°C	
Flag output resistance	R _{FLAG}	-	16	40	Ω	I _{FLAG} =5mA
Flag off current	I _{FLAG}	-	0.01	1	μA	
Current limit threshold	I _{THLIM}	1.25	1.65	2.20	A	
Over current limit level	I _{LIM}	0.6	1.1	1.6	A	

©BD6516F/BD6517F ($V_{DD}=5V$, $T_a=25^{\circ}C$, unless otherwise specified.)

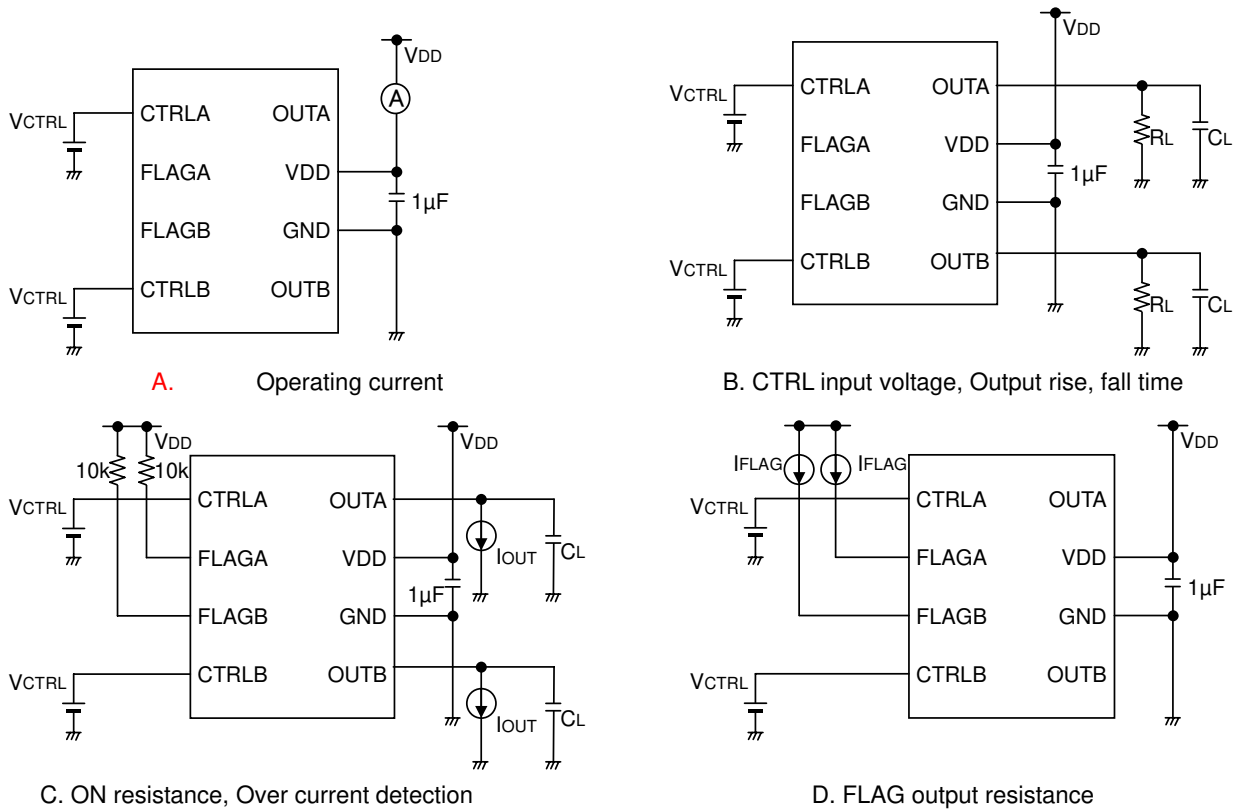
Parameter	Symbol	Limits			Unit	Condition
		Min.	Typ.	Max.		
Current consumption	I _{DD}	-	100	140	μA	V _{CTRL} =5V(BD6516F), 0V(BD6517F) OUT=OPEN
		-	0.01	2	μA	V _{CTRL} =0V(BD6516F), 5V(BD6517F) OUT=OPEN
CTRL input voltage	V _{CTRL}	-	-	0.7	V	Low level input voltage
		2.5	-	-	V	High level input voltage
CTRL input current	I _{CTRL}	-1	0.01	1	μA	V _{CTRL} =0V or 5V
FLAG output resistance	R _{FLAG}	-	250	450	Ω	I _{FLAG} =1mA
FLAG output leak current	I _{FLAG}	-	0.01	1	μA	V _{FLAG} =5V
FLAG output delay	T _{DFL}	-	1	4	ms	
ON resistance	R _{ON}	-	110	150	mΩ	V _{DD} =5V, I _{OUT} =500mA
		-	140	180	mΩ	V _{DD} =3.3V, I _{OUT} =500mA
Over-current Threshold	I _{TH}	1.2	1.65	2.5	A	
Short circuit output current	I _{SC}	1.2	1.65	2.2	A	V _{OUT} =0V
Output leak current	I _{LEAK}	-	-	10	μA	V _{CTRL} =0V(BD6516F), 5V(BD6517F)
Thermal shutdown threshold	T _{TS}	-	135	-	°C	At T _j increase
Output rise time	T _{ON1}	100	1300	4000	μs	R _L =10Ω
Output turn on delay time	T _{ON2}	200	1500	6000	μs	R _L =10Ω
Output fall time	T _{OFF1}	-	1	20	μs	R _L =10Ω
Output turn off delay time	T _{OFF2}	-	3	20	μs	R _L =10Ω

©BD20xxAFJ Series ($V_{DD} = 5V$, $T_a = 25^\circ C$, unless otherwise specified.)

Parameter	Symbol	Limits			Unit	Condition
		Min.	Typ.	Max.		
Operating Current	I_{DD}	-	110	140	μA	$V_{/EN} = 0V$, OUT = OPEN (BD2042AFJ) $V_{EN} = 5V$, OUT = OPEN (BD2052AFJ)
Standby Current	I_{STB}	-	0.01	1	μA	$V_{/EN} = 5V$, OUT = OPEN (BD2042AFJ) $V_{EN} = 0V$, OUT = OPEN (BD2052AFJ)
/EN input voltage	$V_{/EN,EN}$	2.0	-	-	V	High input
		-	-	0.8	V	Low input
		-	-	0.4	V	Low input $2.7V \leq V_{IN} \leq 4.5V$
/EN input current	$I_{/EN,EN}$	-1.0	0.01	1.0	μA	$V_{/EN,EN} = 0V$ or $V_{/EN,EN} = 5V$
/OC output LOW voltage	$V_{/OC}$	-	-	0.5	V	$I_{/OC} = 5mA$
/OC output leak current	$I_{L/OC}$	-	0.01	1	μA	$V_{/OC} = 5V$
ON resistance	R_{ON}	-	100	130	$m\Omega$	$I_{OUT} = 500mA$
Over Current Threshold	I_{TH}	0.7	1.0	1.8	A	
Output current at short	I_{SC}	0.7	1.0	1.3	A	$V_{IN} = 5V$, $V_{OUT} = 0V$, $C_L = 100\mu F$ (RMS)
Output rise time	T_{ON1}	-	1.8	10	ms	$R_L = 10\Omega$, $C_L = OPEN$
Output turn on time	T_{ON2}	-	2.1	20	ms	
Output fall time	T_{OFF1}	-	1	20	μs	
Output turn off time	T_{OFF2}	-	3	40	μs	
UVLO threshold	V_{TUVH}	2.1	2.3	2.5	V	Increasing V_{IN}
	V_{TUVL}	2.0	2.2	2.4	V	Decreasing V_{IN}

● Measurement Circuit

©BD651xF Series



©BD20xxAFJ Series

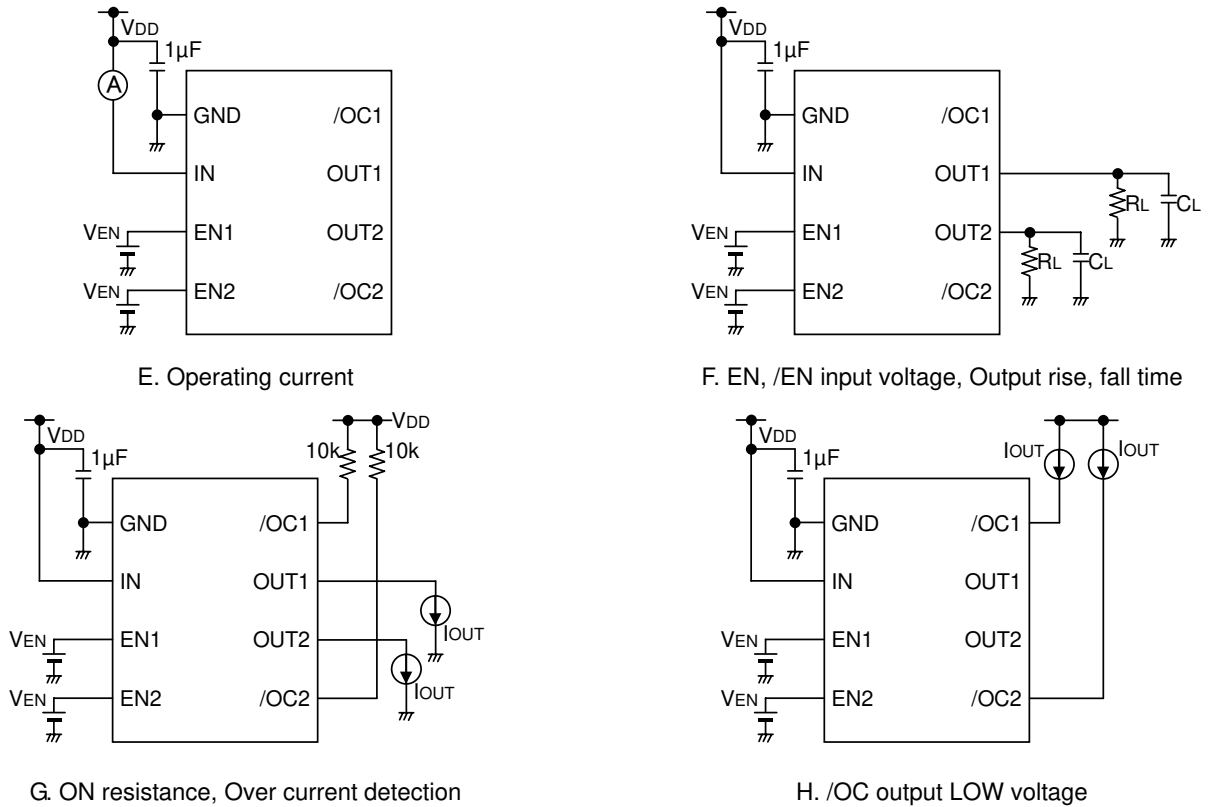
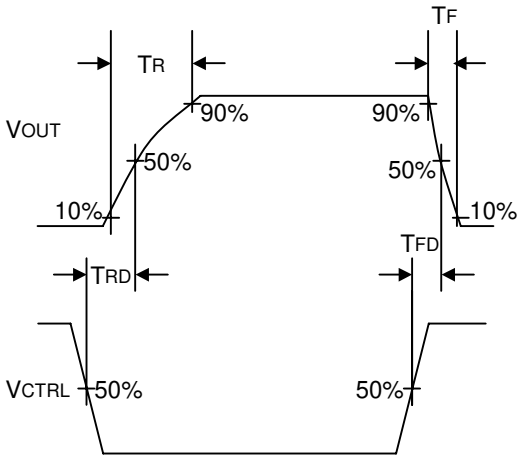


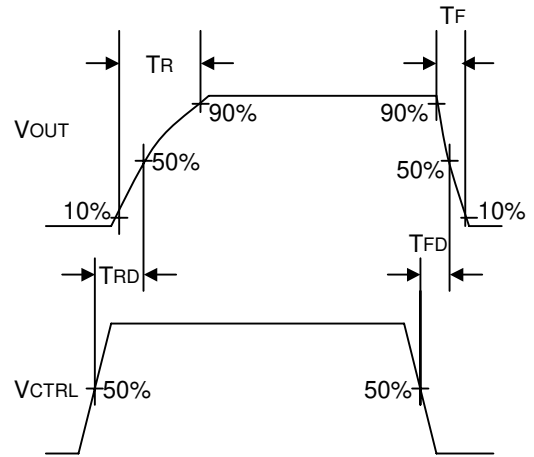
Figure 1. Measurement circuits

●Timing Diagram

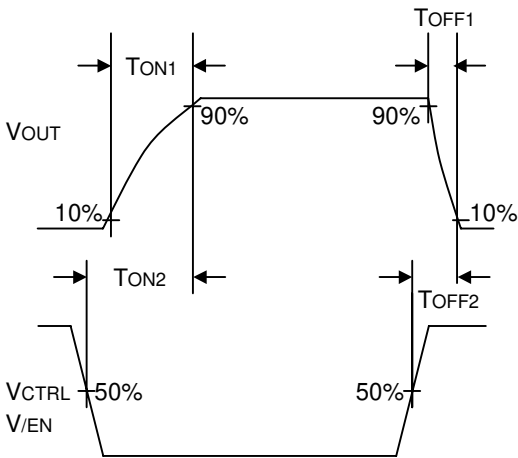
©BD6513F



©BD6512F



©BD6516F/BD2042AFJ



©BD6517F/BD2052AFJ

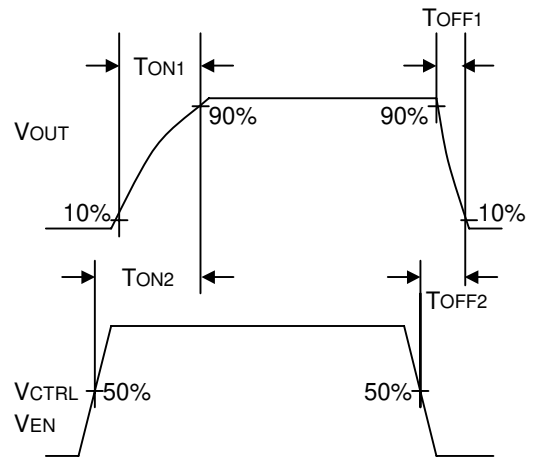


Figure 2. Timing Diagram

● Typical Performance Curves

©BD6512F/ BD6513F

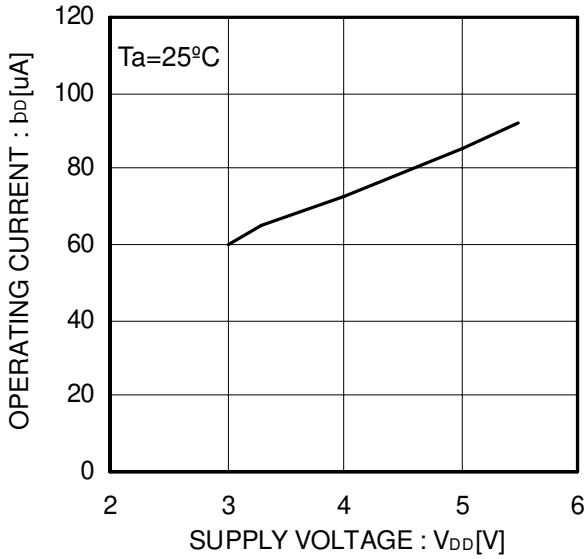


Figure 3. Operating current

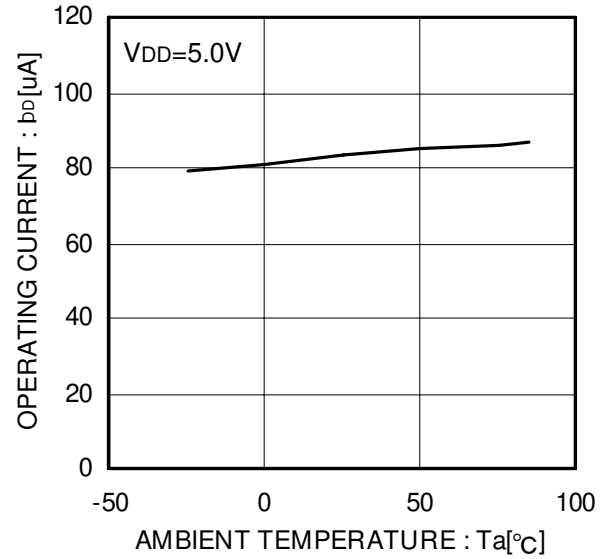


Figure 4. Operating current

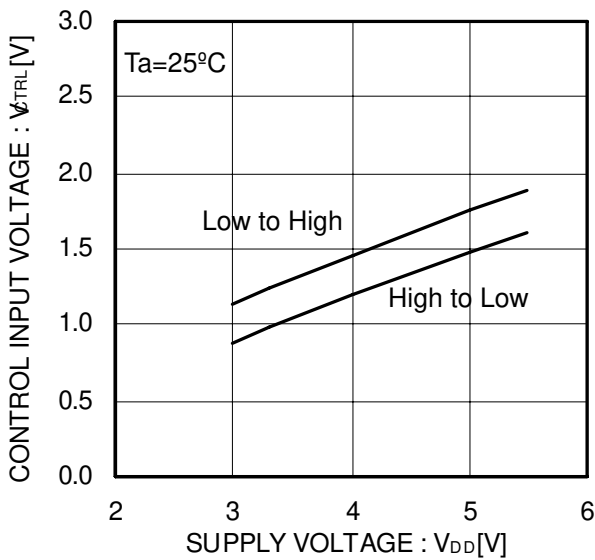


Figure 5. CTRL input voltage

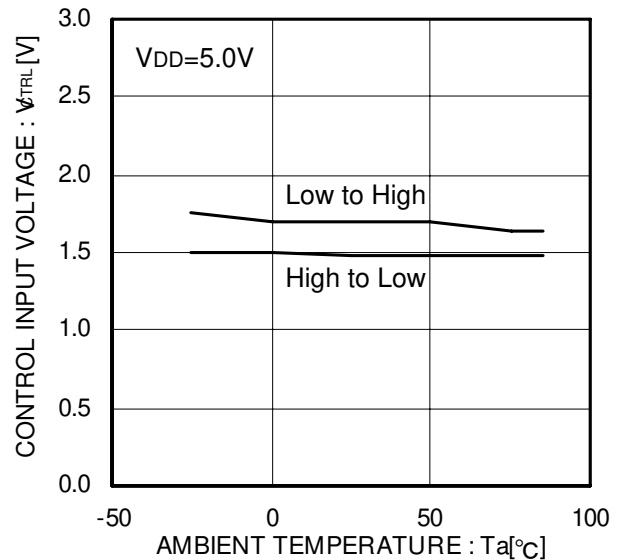


Figure 6. CTRL input voltage

● Typical Performance Curves - continued

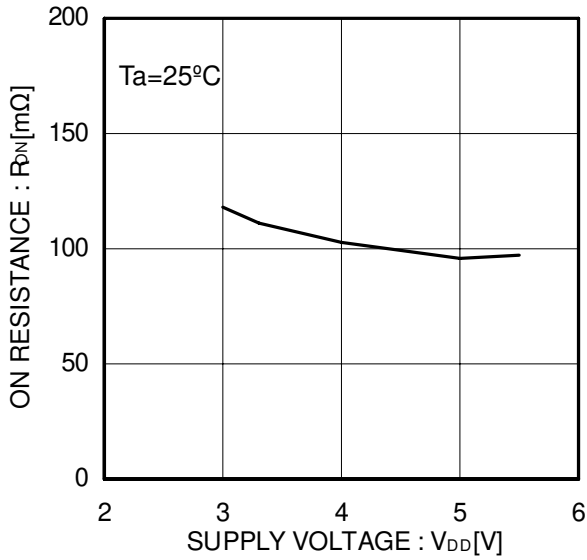


Figure 7. ON resistance

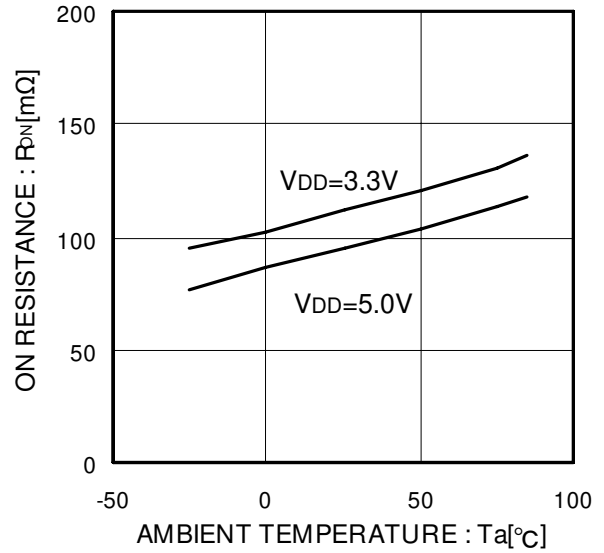


Figure 8. ON resistance

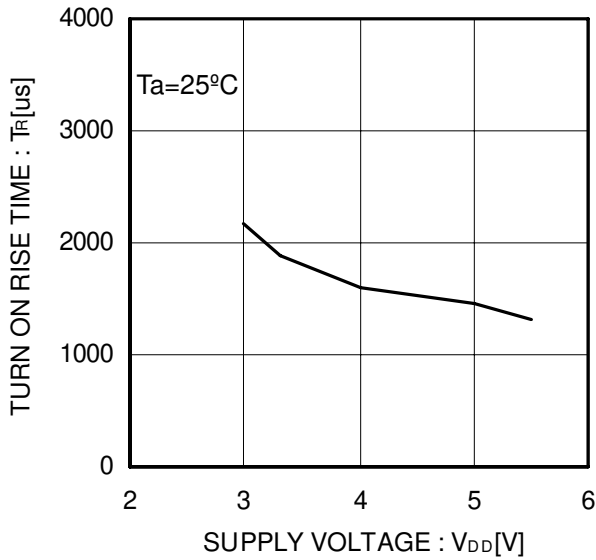


Figure 9. Output rise time

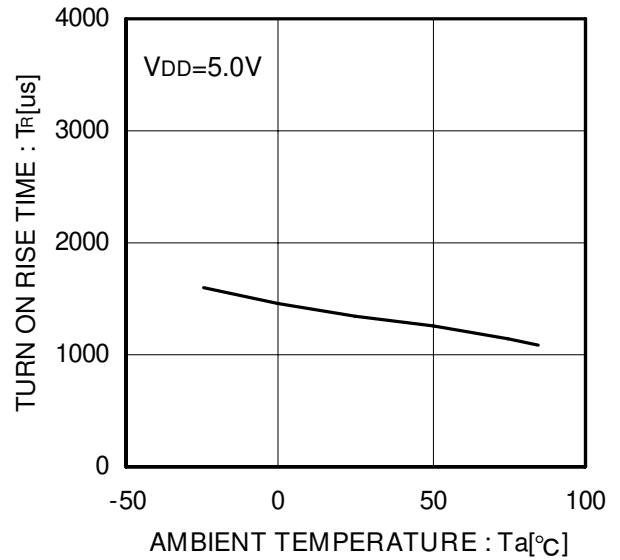


Figure 10. Output rise time

● Typical Performance Curves - continued

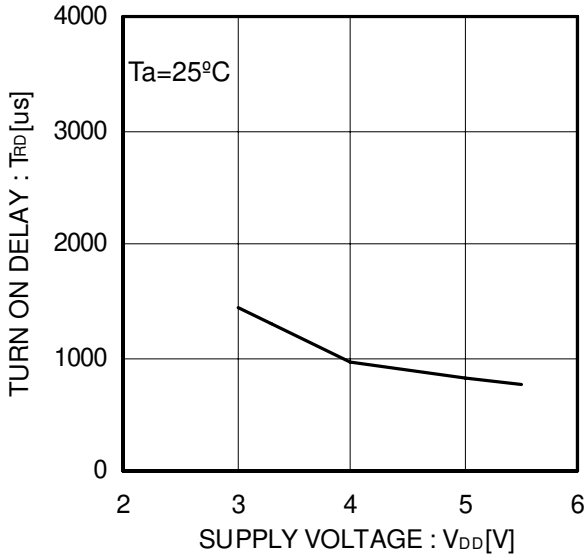


Figure 11. Output rise delay time

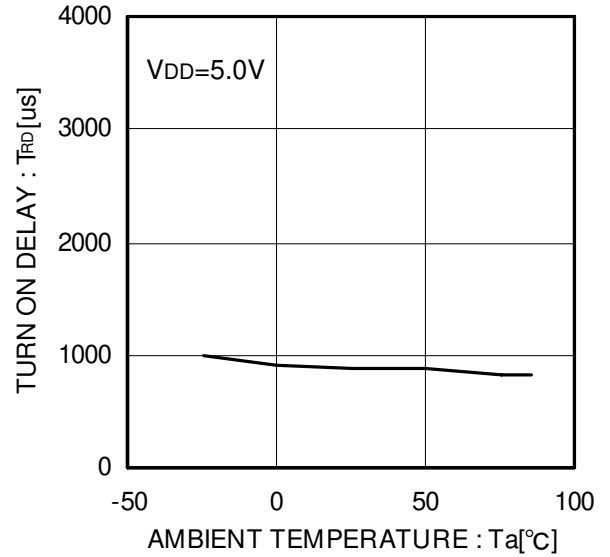


Figure 12. Output rise delay time

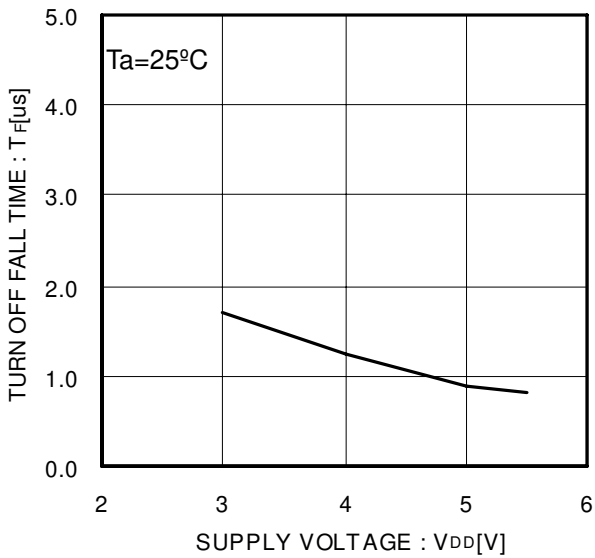


Figure 13. Output fall time

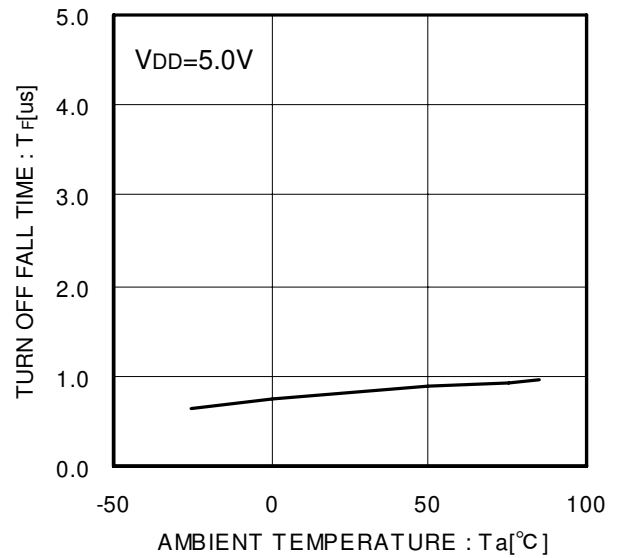


Figure 14. Output fall time

● Typical Performance Curves - continued

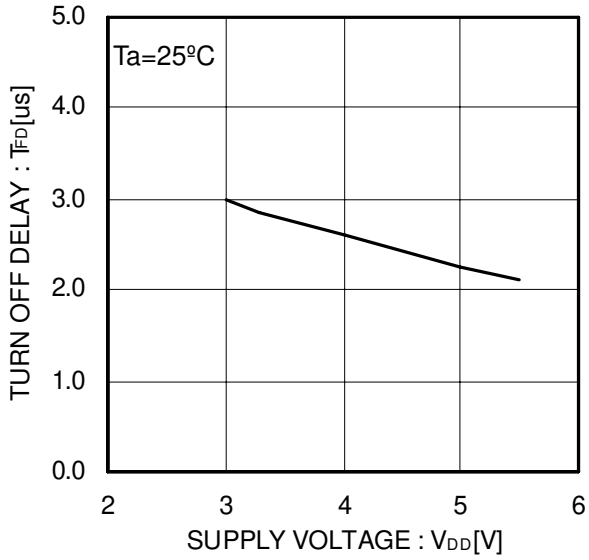


Figure 15. Output fall delay time

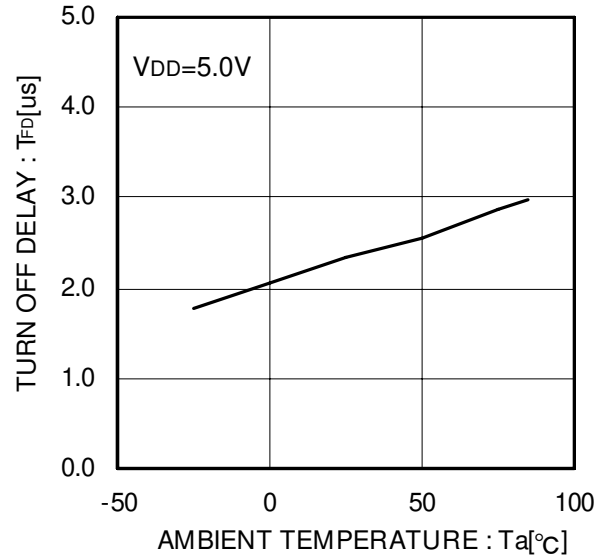


Figure 16. Output fall delay time

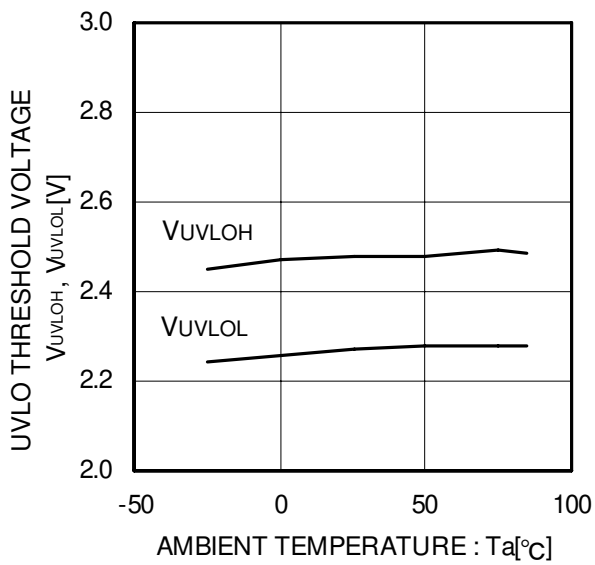


Figure 17. UVLO threshold voltage

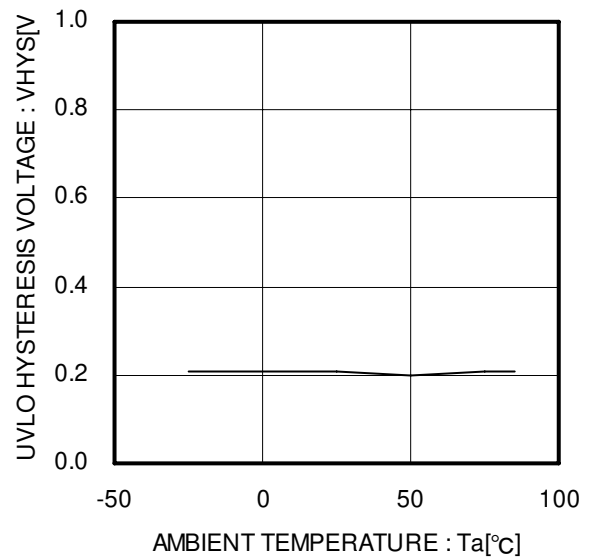


Figure 18. UVLO hysteresis voltage

● Typical Performance Curves - continued

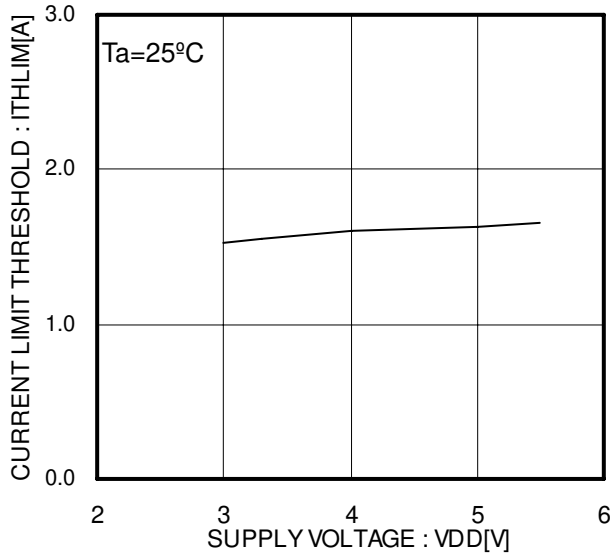


Figure 19. Over current threshold

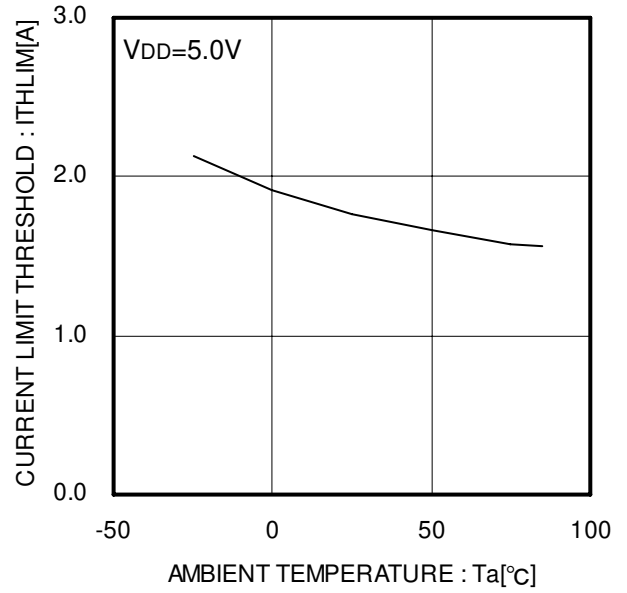


Figure 20. Over current threshold

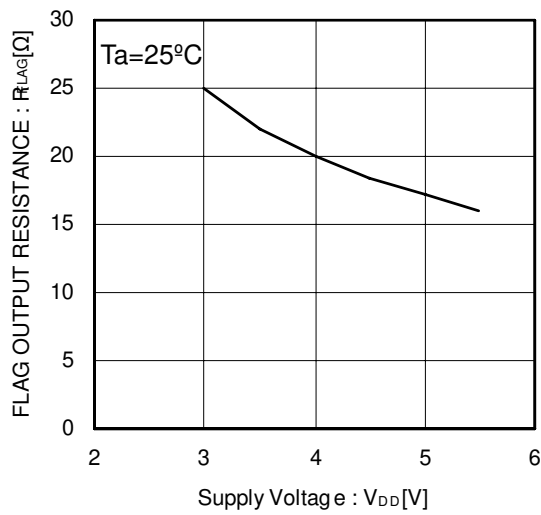


Figure 21. Flag output resistance

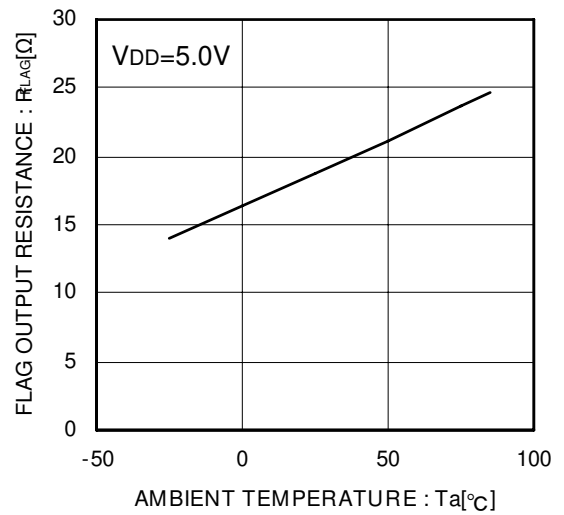


Figure 22. Flag output resistance

● Typical Performance Curves - continued

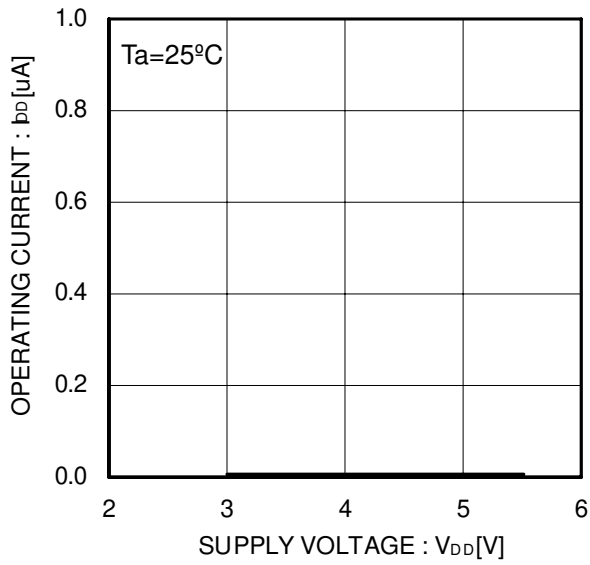


Figure 23. Operating current
CTRL Disable

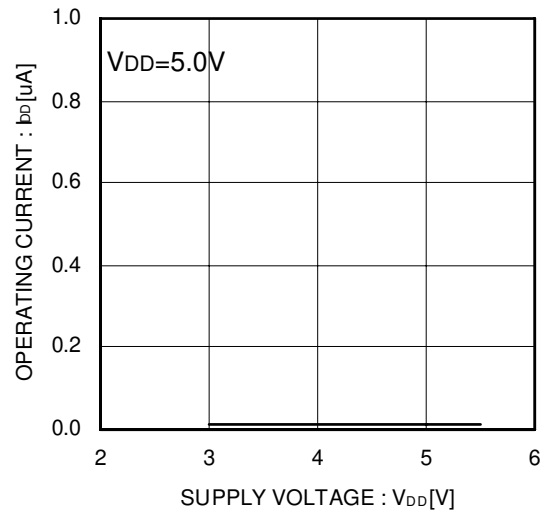


Figure 24. Operating current
CTRL Disable

● Typical Performance Curves – continued

©BD6516F/ BD6517F

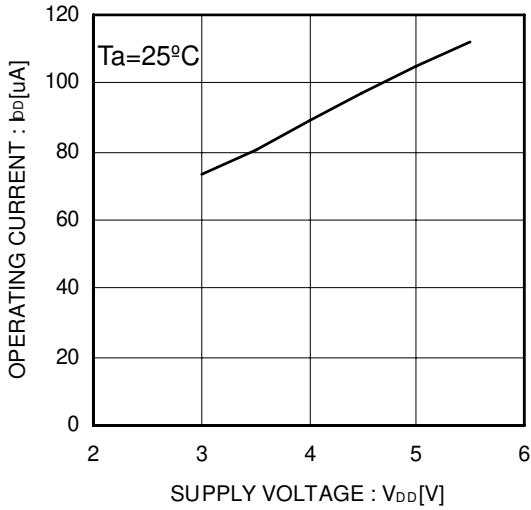


Figure 25. Operating current

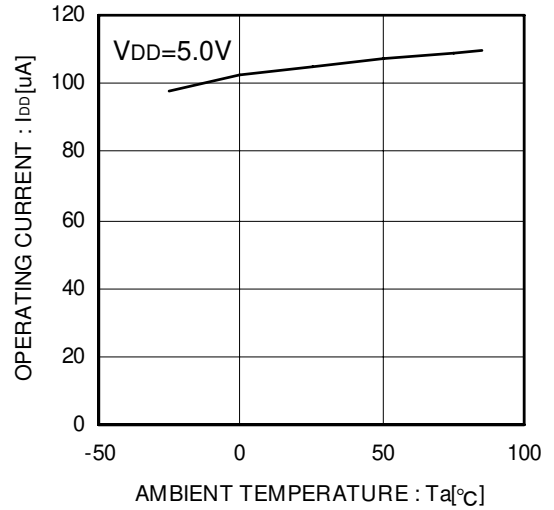


Figure 26. Operating current

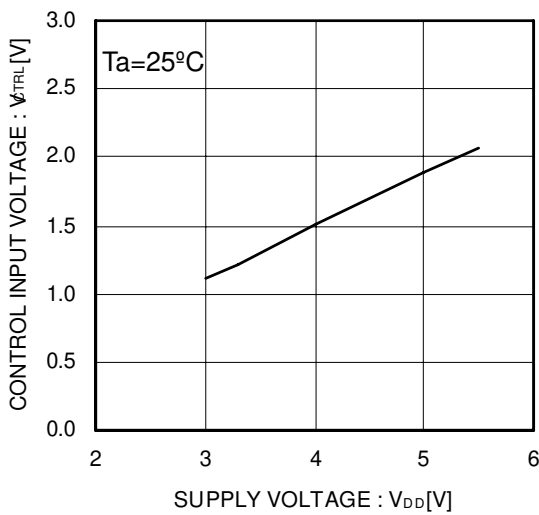


Figure 27. CTRL input voltage (BD6516F)

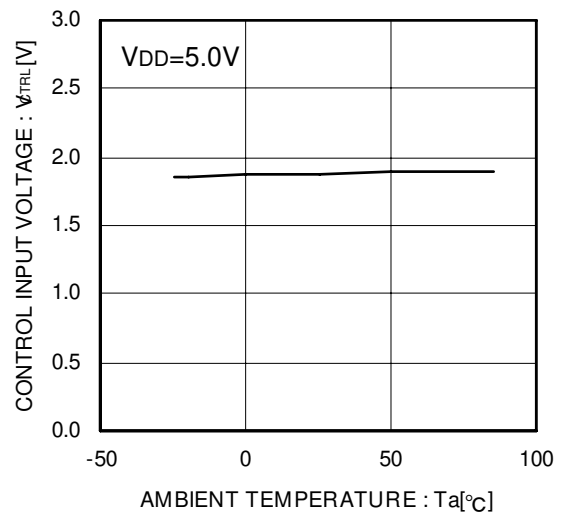


Figure 28. CTRL input voltage (BD6516F)

● Typical Performance Curves - continued

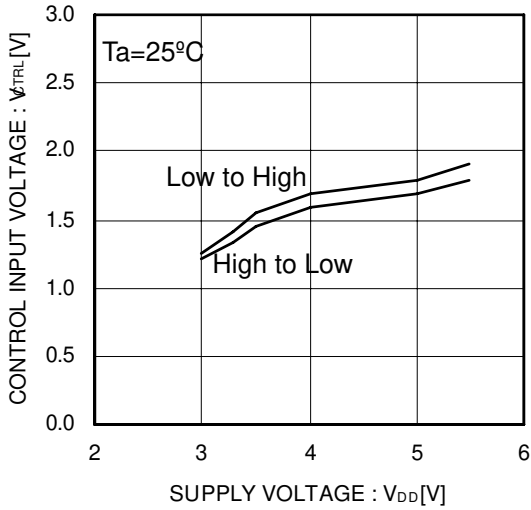


Figure 29. CTRL input voltage (BD6517F)

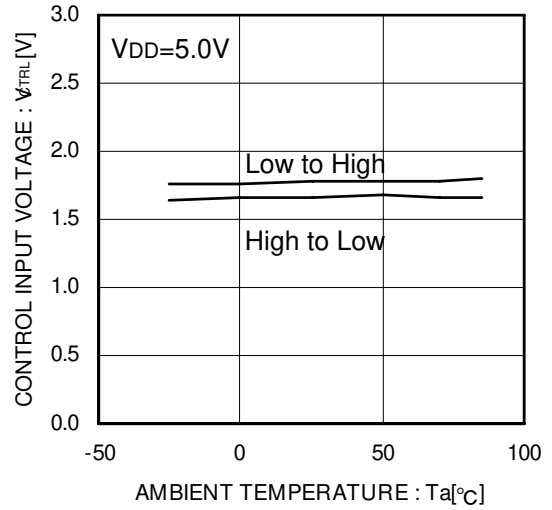


Figure 30. CTRL input voltage (BD6517F)

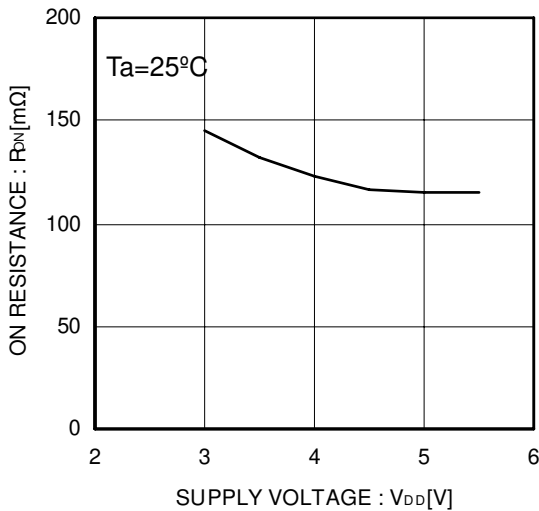


Figure 31. ON resistance

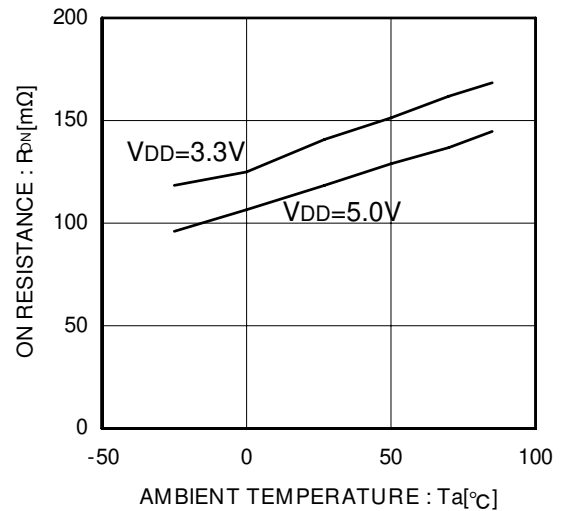


Figure 32. ON resistance

● Typical Performance Curves - continued

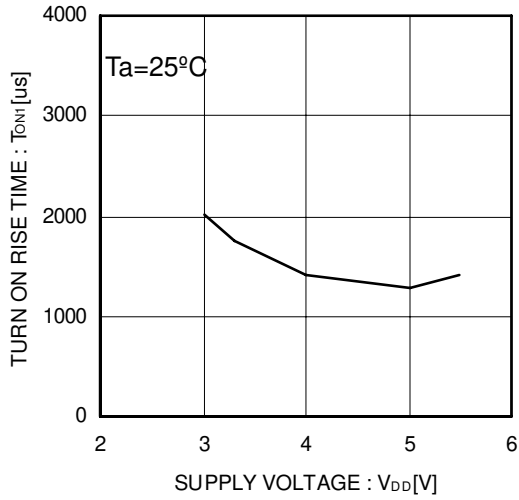


Figure 33. Output rise time

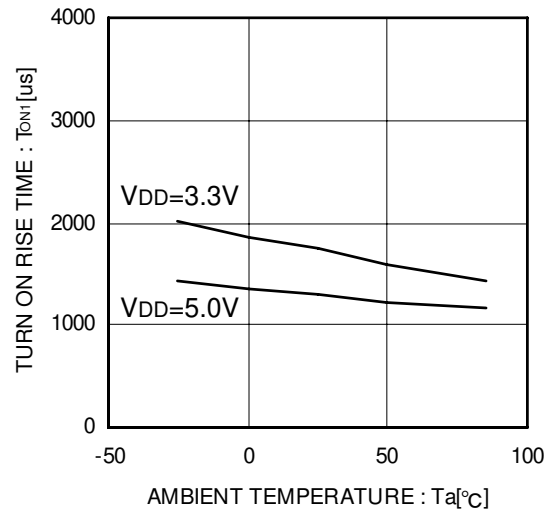


Figure 34. Output rise time

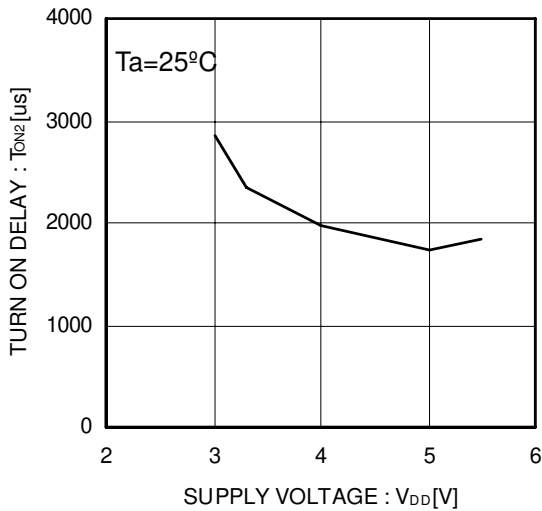


Figure 35. Output rise delay time

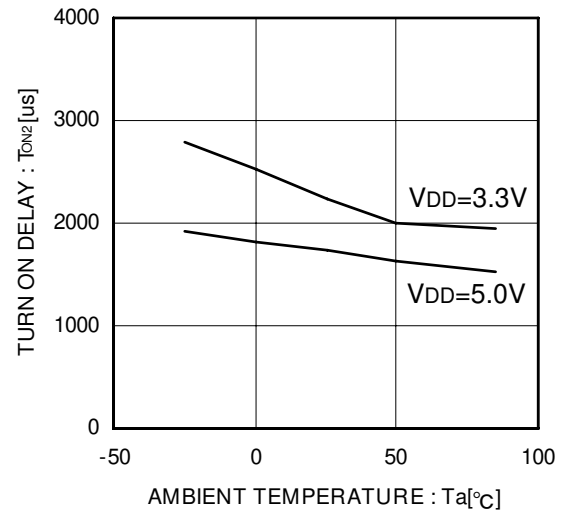


Figure 36. Output rise delay time

● Typical Performance Curves - continued

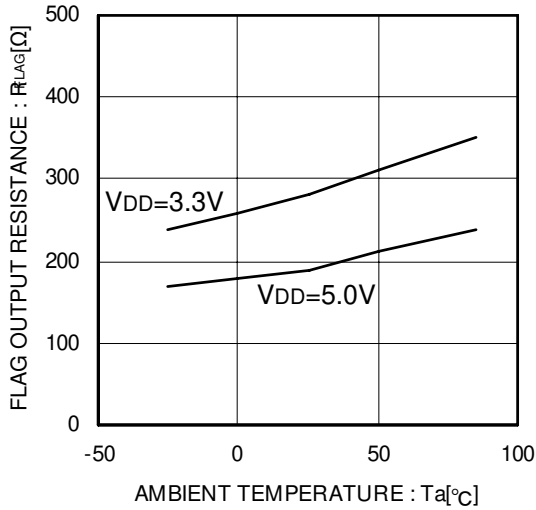


Figure 37. Flag output resistance

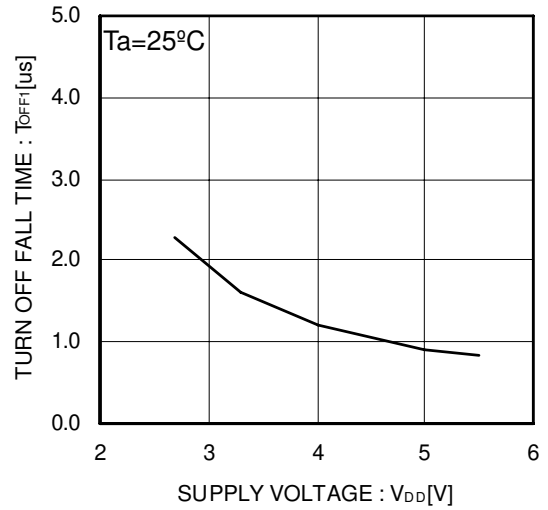


Figure 38. Output fall time

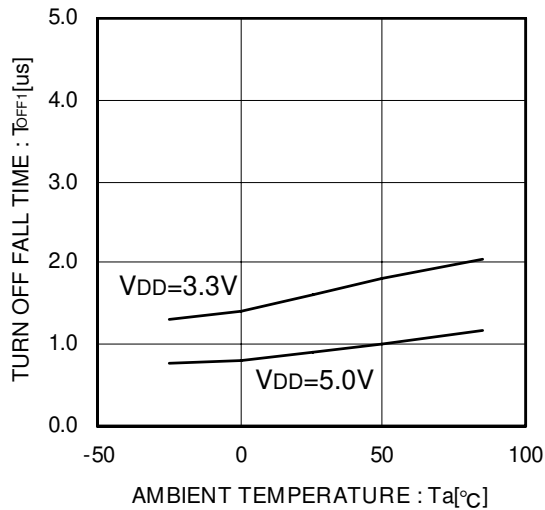


Figure 39. Output fall time

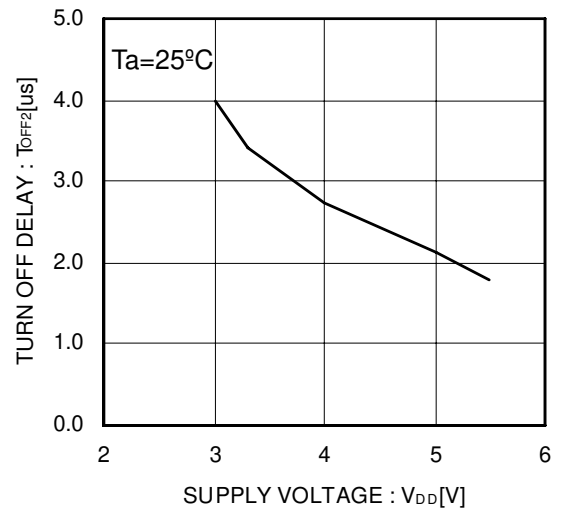


Figure 40. Output fall delay time

● Typical Performance Curves - continued

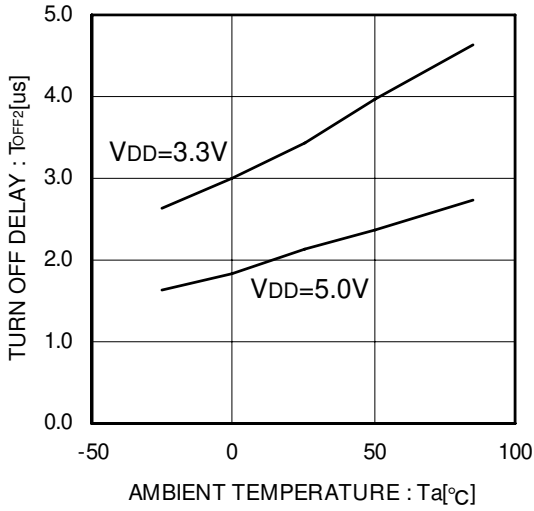


Figure 41. Output fall delay time

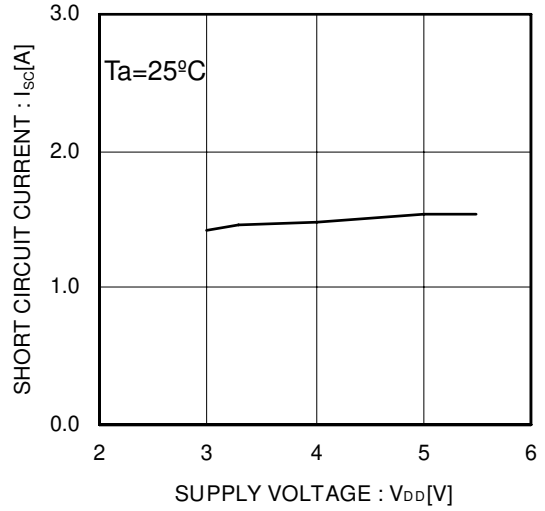


Figure 42. Short-circuit output current

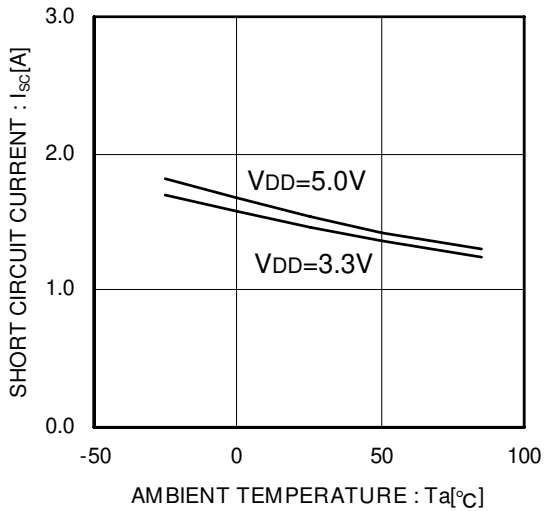


Figure 43. Short-circuit output current

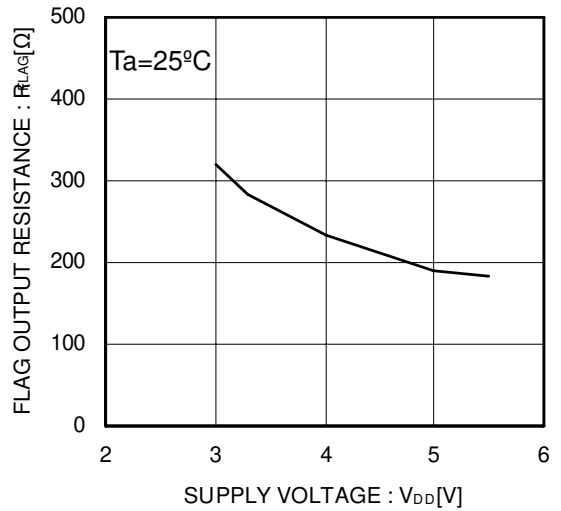


Figure 44. Flag output resistance

● Typical Performance Curves - continued

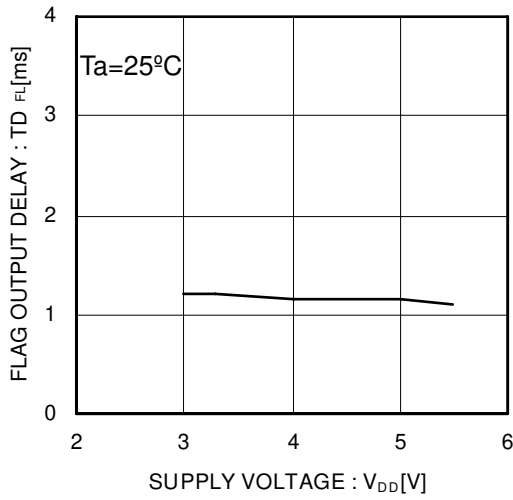


Figure 45. Flag output delay

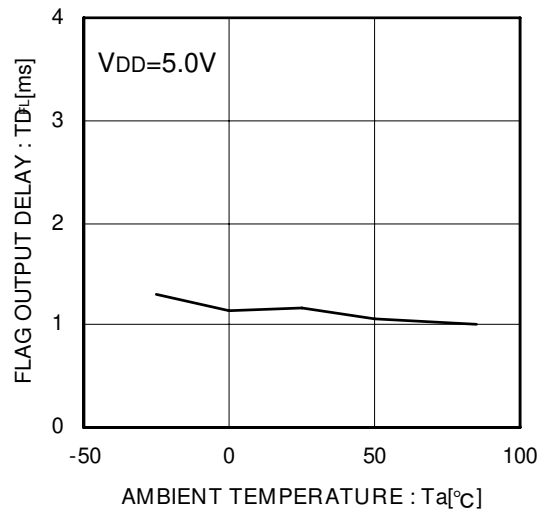


Figure 46. Flag output delay

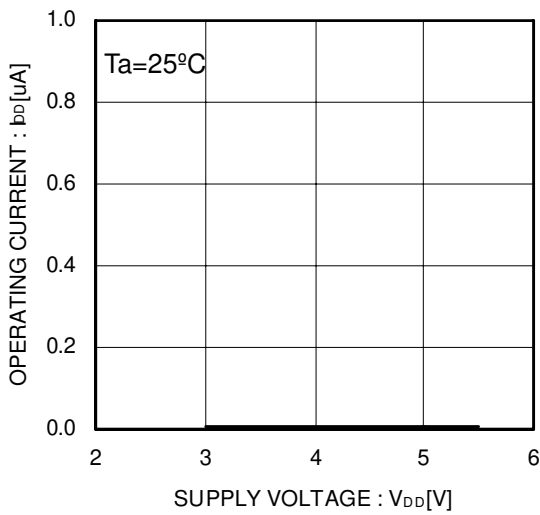


Figure 47. Operating current CTRL Disable

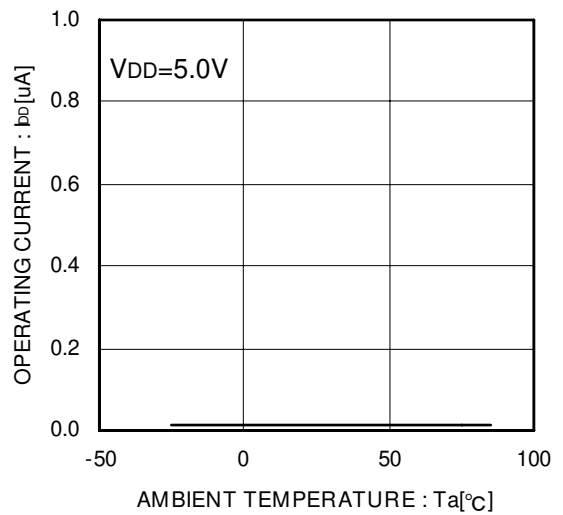


Figure 48. Operating current CTRL Disable

● Typical Performance Curves – continued

©BD2042AFJ/ BD2052AFJ

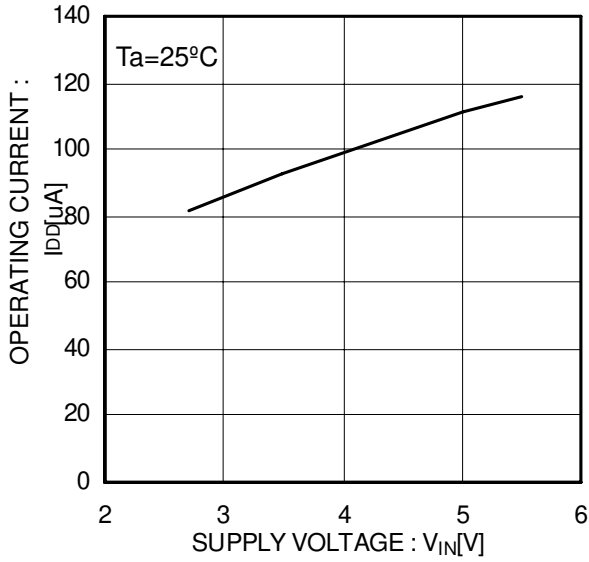


Figure 49. Operating current EN,/EN Enable

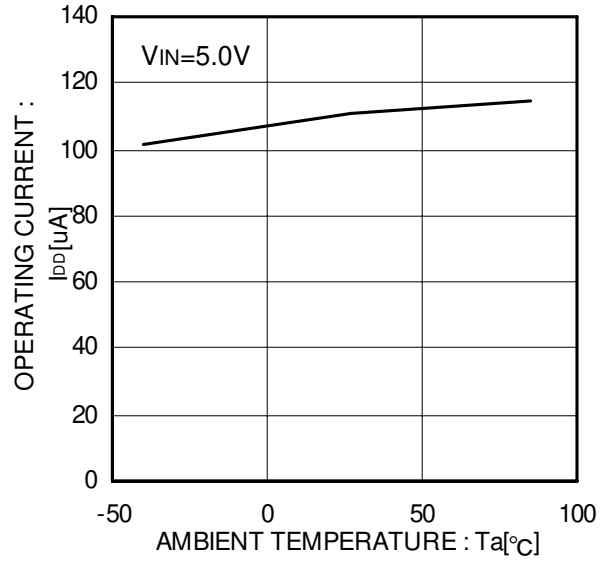


Figure 50. Operating current EN,/EN Enable

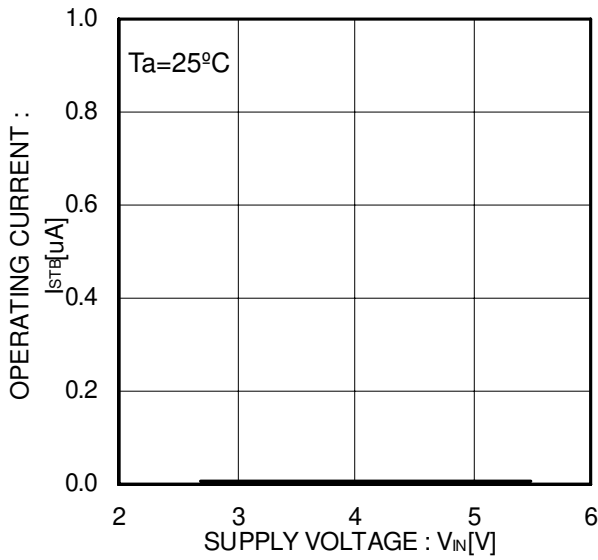


Figure 51. Operating current EN,/EN Disable

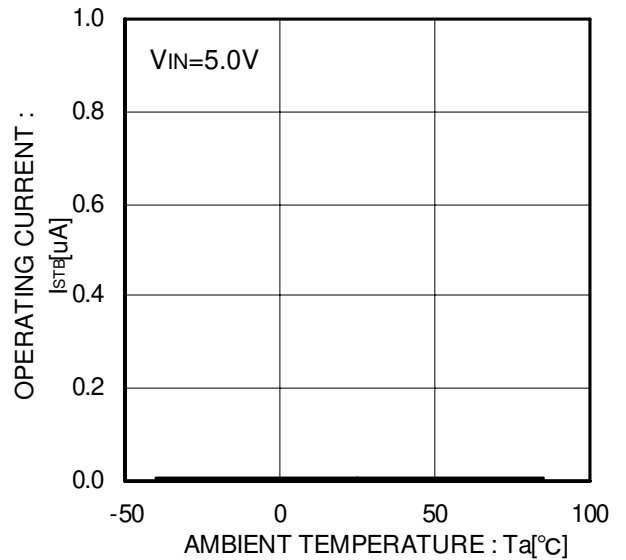


Figure 52. Operating current EN,/EN Disable

● Typical Performance Curves - continued

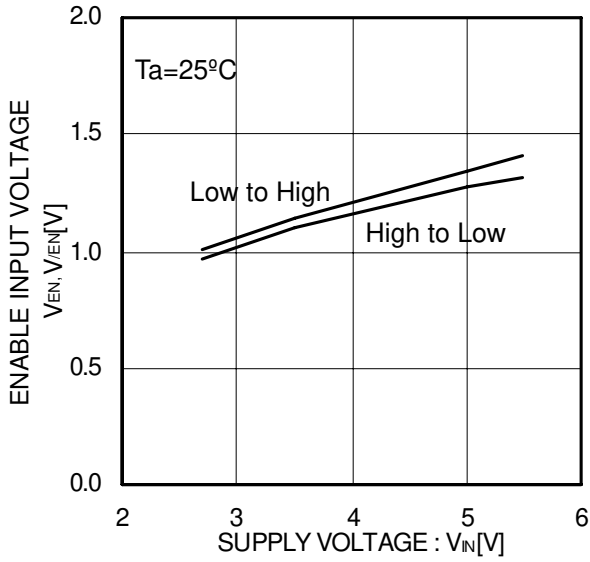


Figure 53. EN,/EN input voltage

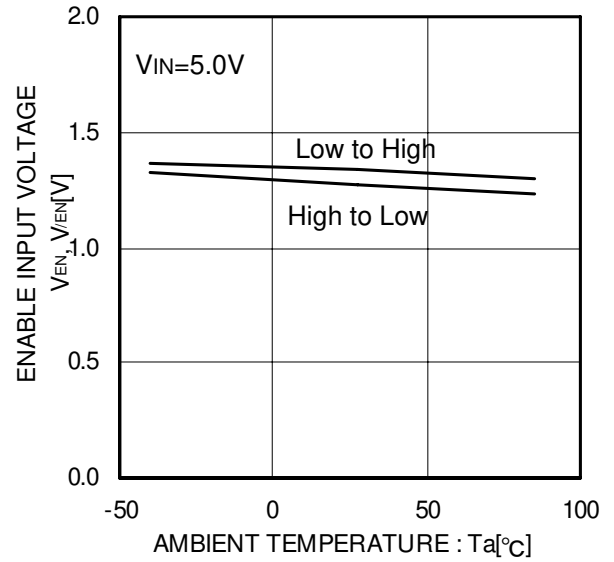


Figure 54. EN,/EN input voltage

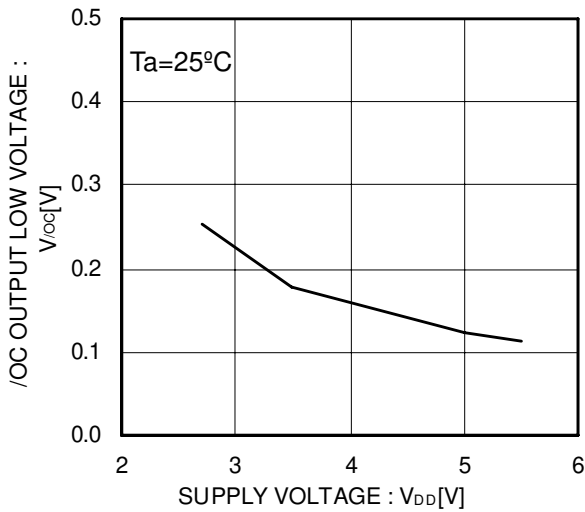


Figure 55. /OC output LOW voltage

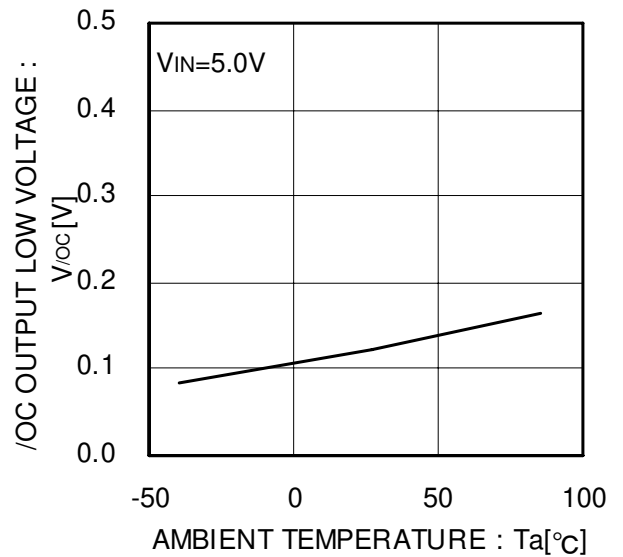


Figure 56. /OC output LOW voltage

● Typical Performance Curves - continued

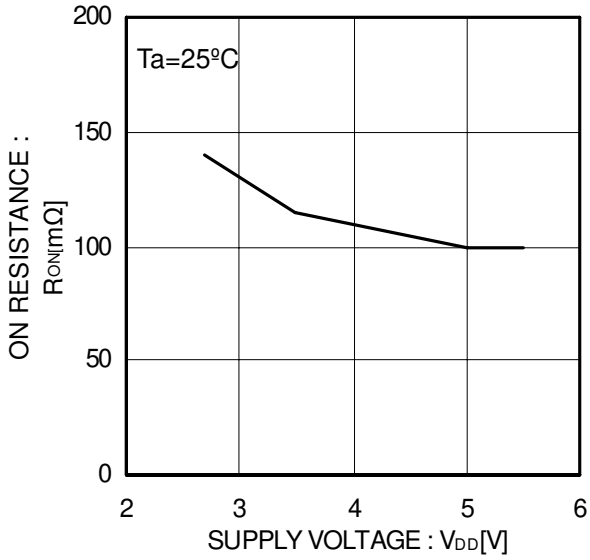


Figure 57. ON resistance

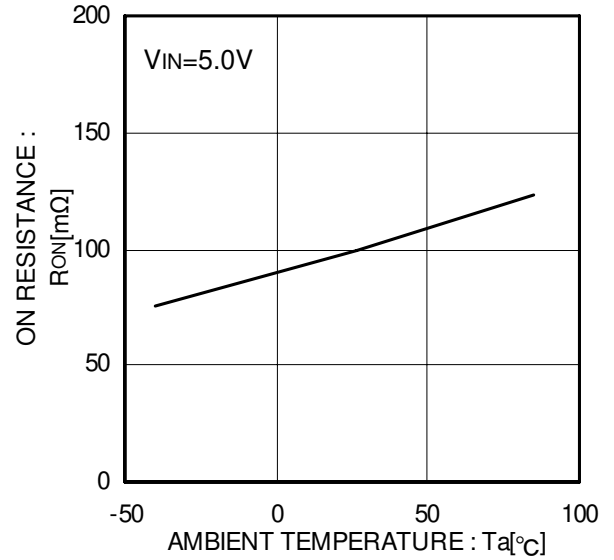


Figure 58. ON resistance

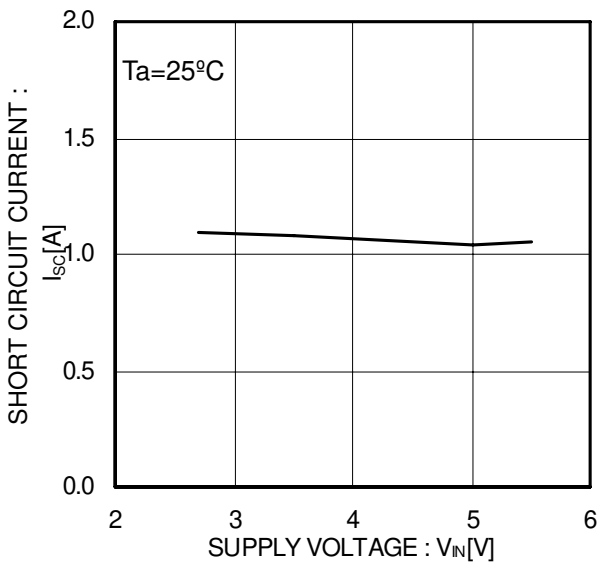


Figure 59. Output current at short-circuit

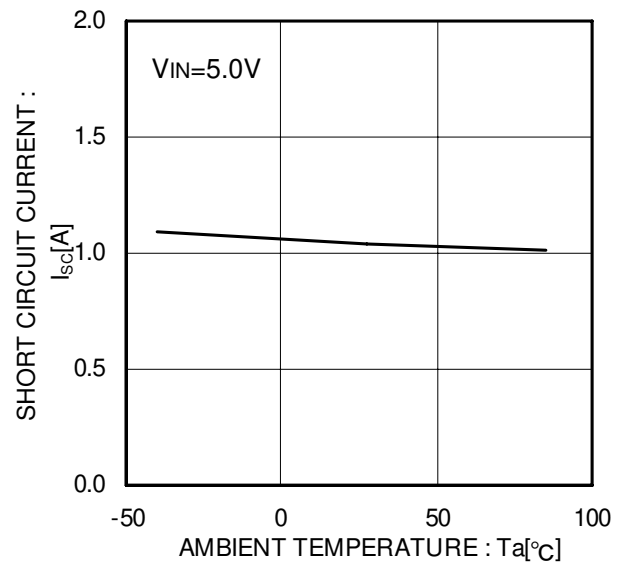


Figure 60. Output current at short-circuit

● Typical Performance Curves - continued

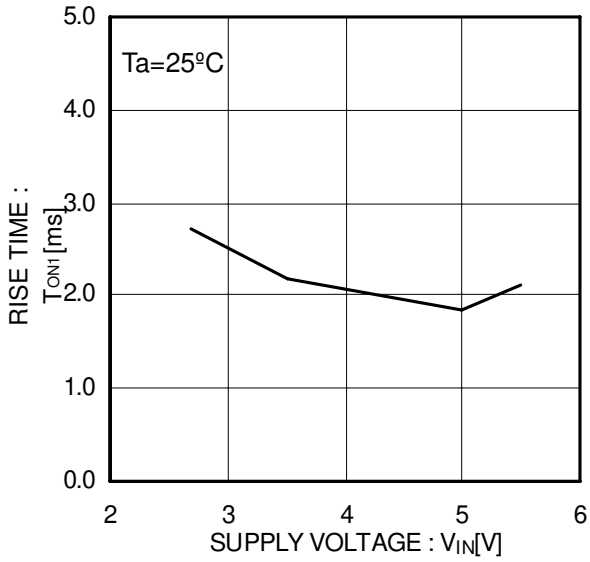


Figure 61. Output rise time

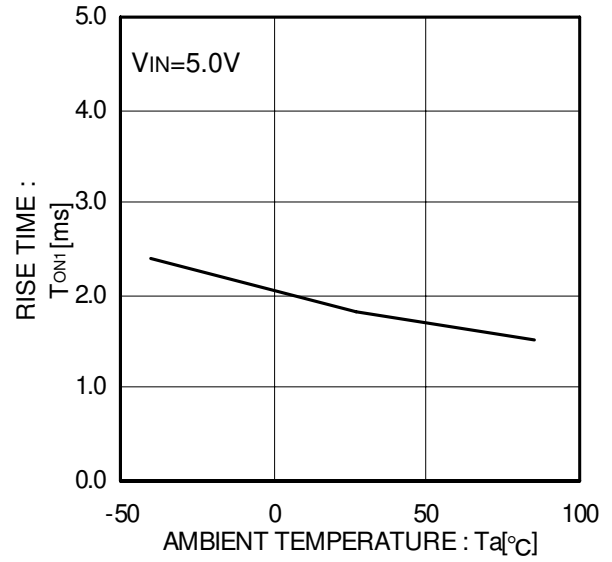


Figure 62. Output rise time

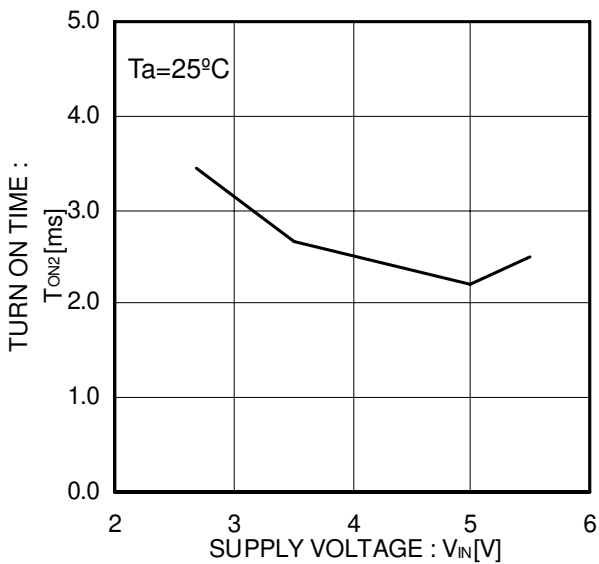


Figure 63. Output turn on time

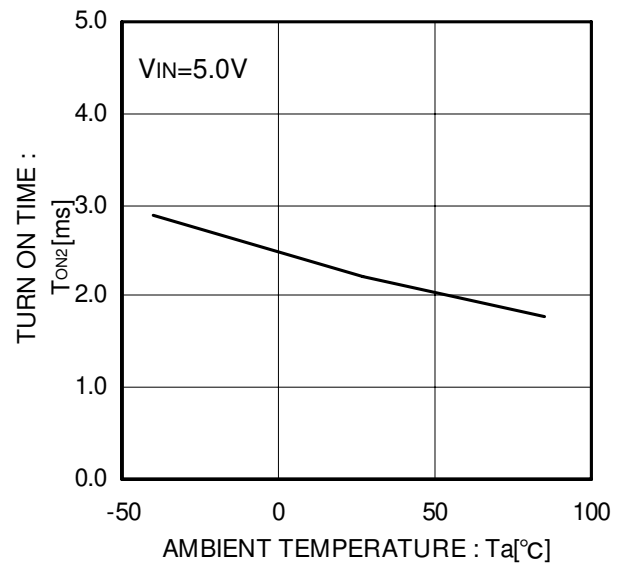


Figure 64. Output turn on time

● Typical Performance Curves - continued

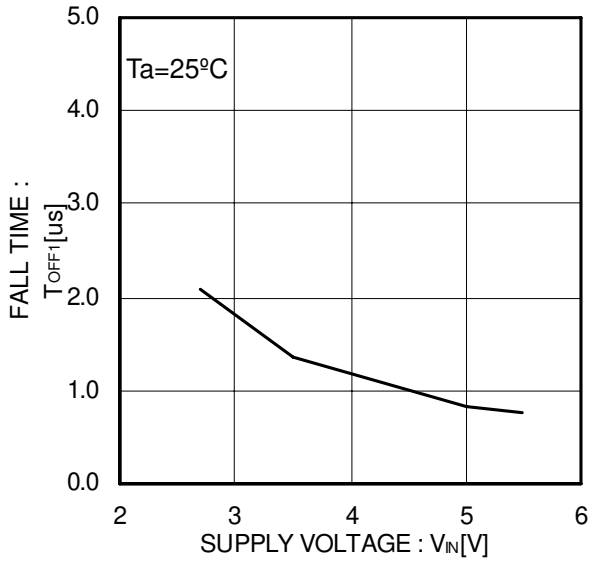


Figure 65. Output fall time

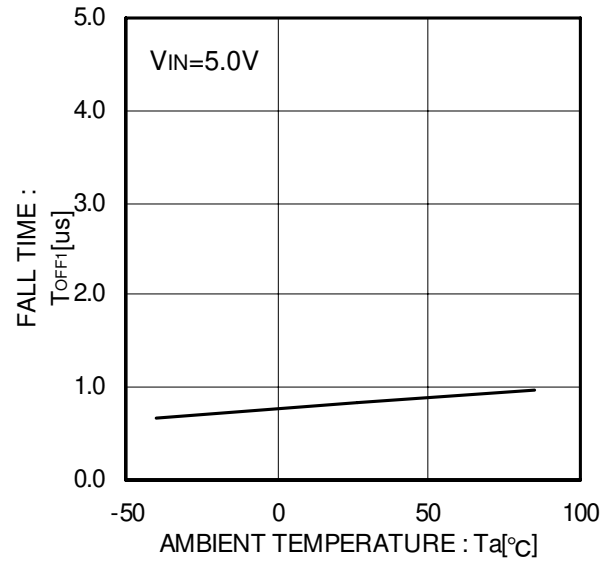


Figure 66. Output fall time

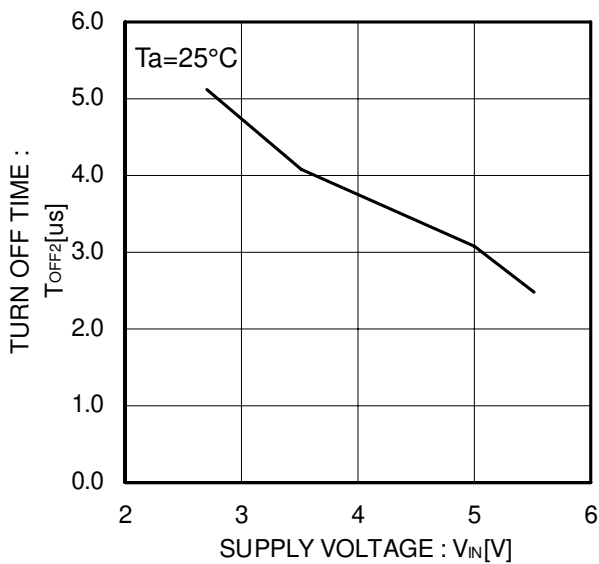


Figure 67. Output turn off time

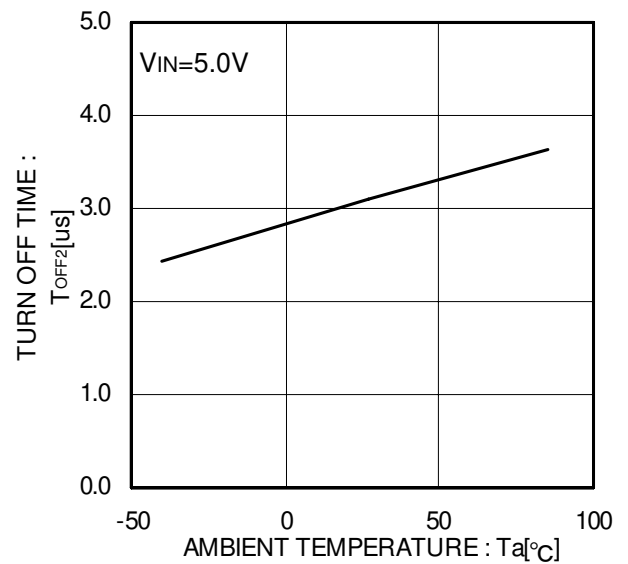


Figure 68. Output turn off time

● Typical Performance Curves - continued

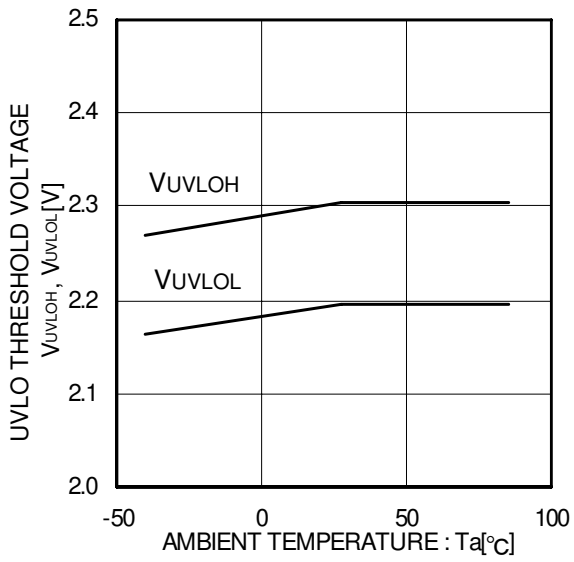


Figure 69. UVLO threshold voltage

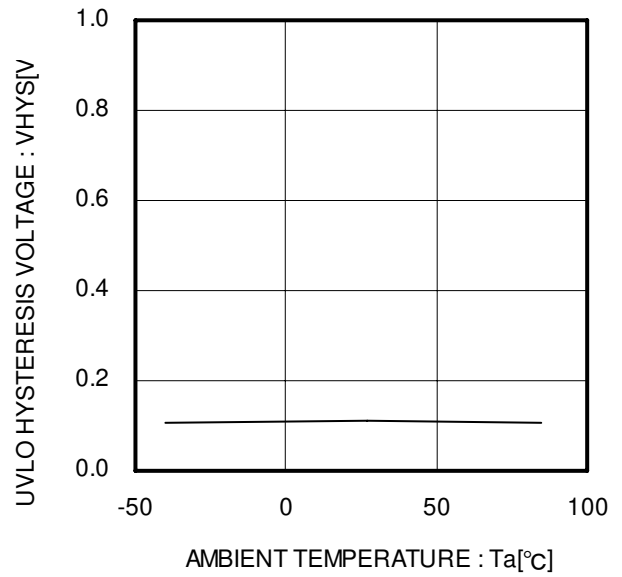


Figure 70. UVLO hysteresis voltage