



Chipsmall Limited consists of a professional team with an average of over 10 year of expertise in the distribution of electronic components. Based in Hongkong, we have already established firm and mutual-benefit business relationships with customers from,Europe,America and south Asia,supplying obsolete and hard-to-find components to meet their specific needs.

With the principle of “Quality Parts,Customers Priority,Honest Operation,and Considerate Service”,our business mainly focus on the distribution of electronic components. Line cards we deal with include Microchip,ALPS,ROHM,Xilinx,Pulse,ON,Everlight and Freescale. Main products comprise IC,Modules,Potentiometer,IC Socket,Relay,Connector.Our parts cover such applications as commercial,industrial, and automotives areas.

We are looking forward to setting up business relationship with you and hope to provide you with the best service and solution. Let us make a better world for our industry!



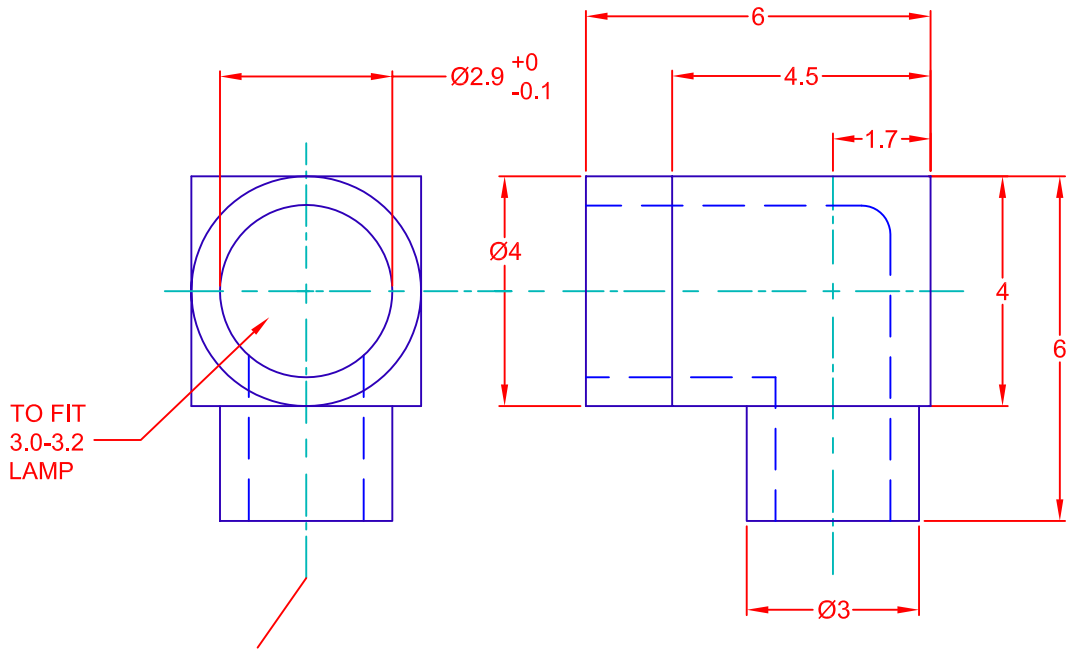
## Contact us

Tel: +86-755-8981 8866 Fax: +86-755-8427 6832

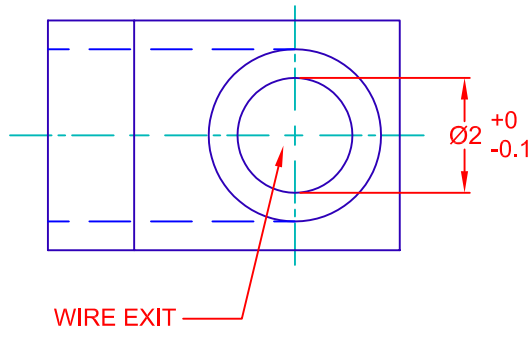
Email & Skype: info@chipsmall.com Web: www.chipsmall.com

Address: A1208, Overseas Decoration Building, #122 Zhenhua RD., Futian, Shenzhen, China





PARTING LINE 0.20 MAX.  
FLASH ALLOWED



ALL DIMENSIONS APPLY AS MOLDED.  
MATERIAL: SILICONE RUBBER/UL94V-0  
COLOR: GRAY

REV. NO.	DESCRIPTION/ECO NUMBER	APPV'D DATE
A	ADD DIMENSIONS & HIDDEN LINES	3/9/06
	RELEASED TO CAD	7/16/03

METRIC	DIMENSIONS ARE IN MILLIMETERS
	TOLERANCE UNLESS OTHERWISE SPECIFIED
THIRD ANGLE PROJECTION	1 PL +/- 0.2
	2 PL +/- 0
	ANGLE +/- 0
DRAWN BY	APPV'D BY DATE
L. WENGSTROM	J.K. 3/9/06
- CAD DRAWING -	
MANUAL REVISIONS NOT PERMITTED	

<b>JKL COMPONENTS CORPORATION</b>			
TITLE 3mm FLUORESCENT RIGHT ANGLE END CAP			
SIZE	FSCM NO.	DRAWING NO.	
A	55335	BF3/RC	
SCALE	RELEASED DATE	REVISION DATE	REV. NO.
NONE	7/16/03	3/9/06	A
			SHEET 1 OF 1