



Chipsmall Limited consists of a professional team with an average of over 10 year of expertise in the distribution of electronic components. Based in Hongkong, we have already established firm and mutual-benefit business relationships with customers from,Europe,America and south Asia,supplying obsolete and hard-to-find components to meet their specific needs.

With the principle of "Quality Parts,Customers Priority,Honest Operation,and Considerate Service",our business mainly focus on the distribution of electronic components. Line cards we deal with include Microchip,ALPS,ROHM,Xilinx,Pulse,ON,Everlight and Freescale. Main products comprise IC,Modules,Potentiometer,IC Socket,Relay,Connector.Our parts cover such applications as commercial,industrial, and automotives areas.

We are looking forward to setting up business relationship with you and hope to provide you with the best service and solution. Let us make a better world for our industry!



Contact us

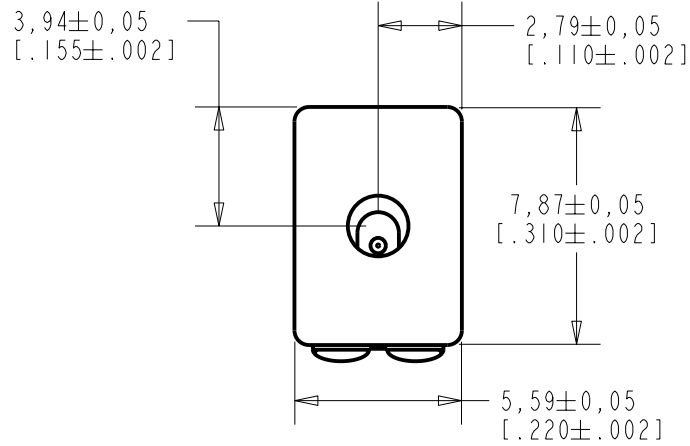
Tel: +86-755-8981 8866 Fax: +86-755-8427 6832

Email & Skype: info@chipsmall.com Web: www.chipsmall.com

Address: A1208, Overseas Decoration Building, #122 Zhenhua RD., Futian, Shenzhen, China

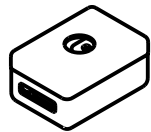
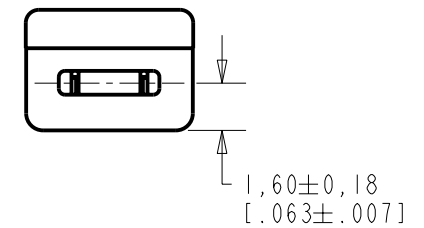
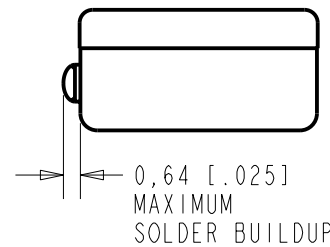
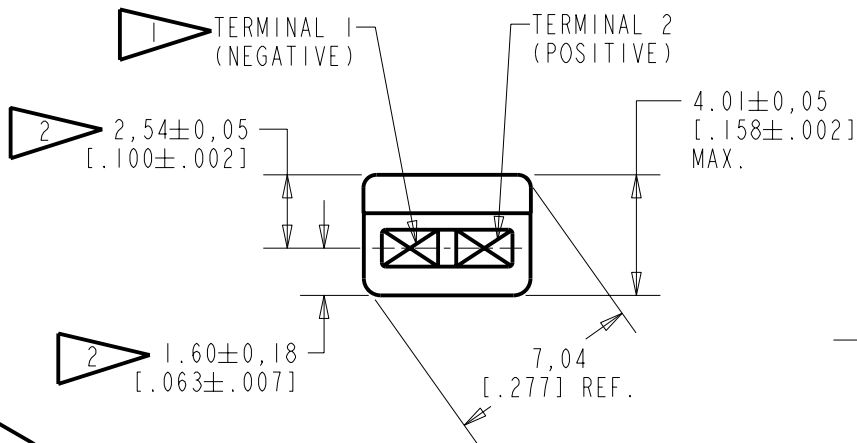


BJ-28471-000
SHT 1.1



NOTES:

- 1 A DECREASE IN PRESSURE AT THE SOUND INLET WILL CAUSE A POSITIVE VOLTAGE AT TERMINAL 2 RELATIVE TO TERMINAL 1.
- 2 LOCATED FROM TWO SURFACES FOR CUSTOMER CONVENIENCE. ONLY APPLICABLE FROM ONE SURFACE, NOT TO BE USED TOGETHER.



SCALE 2:1
NOMINAL WEIGHT
.66 GRAM

DIMENSIONS IN MILLIMETERS [INCHES]

Revision	C.O. #	Implementation Date	RELEASE LEVEL	REVISION
A	CI0103470	12-9-05	Released	A

SCALE: 4:1		DR. BY: CRG	DATE: 12-9-05
DO NOT SCALE DRAWING			
TITLE: MICROPHONE		BJ-28471-000	
OUTLINE DRAWING		SHT 1.1	
		APP. BY: GJP	DATE: 1-5-06
		GJP	1-5-06

KNOWLES ELECTRONICS
ITASCA, ILLINOIS U.S.A.

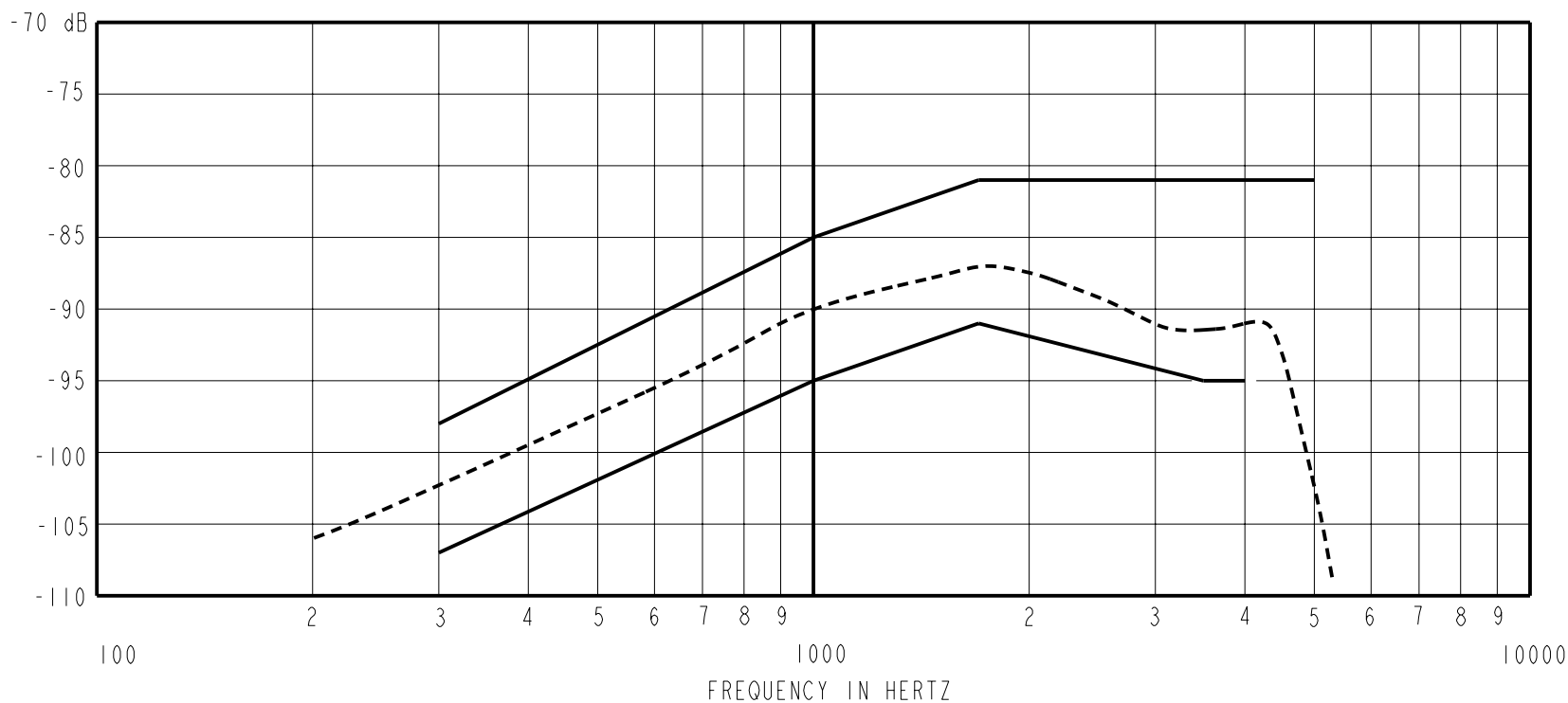
WHEN TEST LIMITS ARE USED TO ESTABLISH INCOMING INSPECTION ACCEPTANCE/REJECTION CRITERIA, CORRELATION OF TEST EQUIPMENT WITH KNOWLES IS ALSO REQUIRED FOR ELIMINATION OF EQUIPMENT AND TEST METHOD VARIATIONS.

NO DAMPING

BJ-28471-000

SHEET 2.1

SENSITIVITY IN dB RELATIVE TO 1.0 VOLT/0.1 Pa (N/M²)
FOR CONDITIONS SHOWN BELOW.



NOTES: SENSITIVITY DEVICE CONFORMITY
FREQUENCY MIN. NOM. MAX. RANGE OF DEVIATION FROM 1KHz

- LOAD RESISTANCE FOR SENSITIVITY MEASUREMENT: 150 OHMS
- OUTPUT IMPEDANCE AT 1kHz: 150 OHMS NOMINAL
- NOMINAL DC RESISTANCE AT 20°C: 34.5 OHMS
- TESTED WITH REAR PORT OPEN TO LARGE SOUND FREE VOLUME
-

<u>SENSITIVITY</u>		
<u>FREQUENCY</u>	<u>MIN.</u>	<u>MAX.</u>
300	-107.0	-97.0
1000	-95.0	-85.0
1700	-91.0	-81.0
3500	-95.0	---
4000	-95.0	---
5000	---	-81.0

- FOR EQUAL SPL APPLIED TO FRONT AND REAR PORTS IN PHASE AT 1000 Hz THE SENSITIVITY WILL REDUCE BY AT LEAST 10 dB.
- FRONT PORT LOCATION: 0N
REAR PORT LOCATION: 12N

Revision	C.O. #	Implementation Date	RELEASE LEVEL	REVISION
			Released	A
A	C10103470	12-9-05		

KNOWLES ELECTRONICS
ITASCA, ILLINOIS U.S.A.

WHEN TEST LIMITS ARE USED TO ESTABLISH INCOMING INSPECTION ACCEPTANCE/REJECTION CRITERIA, CORRELATION OF TEST EQUIPMENT WITH KNOWLES IS ALSO REQUIRED FOR ELIMINATION OF EQUIPMENT AND TEST METHOD VARIATION

TITLE: **MICROPHONE**
PERFORMANCE SPECIFICATION

BJ-28471-000
SHT 2.1

DR. BY	DATE
CRG	12-9-05
CK. BY	DATE
GJP	1-5-06
APP. BY	DATE
GJP	1-5-06