



Chipsmall Limited consists of a professional team with an average of over 10 year of expertise in the distribution of electronic components. Based in Hongkong, we have already established firm and mutual-benefit business relationships with customers from,Europe,America and south Asia,supplying obsolete and hard-to-find components to meet their specific needs.

With the principle of "Quality Parts,Customers Priority,Honest Operation,and Considerate Service",our business mainly focus on the distribution of electronic components. Line cards we deal with include Microchip,ALPS,ROHM,Xilinx,Pulse,ON,Everlight and Freescale. Main products comprise IC,Modules,Potentiometer,IC Socket,Relay,Connector.Our parts cover such applications as commercial,industrial, and automotives areas.

We are looking forward to setting up business relationship with you and hope to provide you with the best service and solution. Let us make a better world for our industry!



Contact us

Tel: +86-755-8981 8866 Fax: +86-755-8427 6832

Email & Skype: info@chipsmall.com Web: www.chipsmall.com

Address: A1208, Overseas Decoration Building, #122 Zhenhua RD., Futian, Shenzhen, China



DATA CONTAINED IN THIS DOCUMENT IS
 PROPRIETARY TO TROMPETER ELECTRONICS INC.
 AND SHALL NOT BE DISCLOSED, COPIED OR USED
 FOR PROCUREMENT OR MANUFACTURE WITHOUT
 EXPRESS WRITTEN PERMISSION OF TROMPETER
 ELECTRONICS INC.

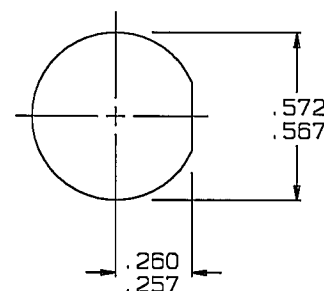
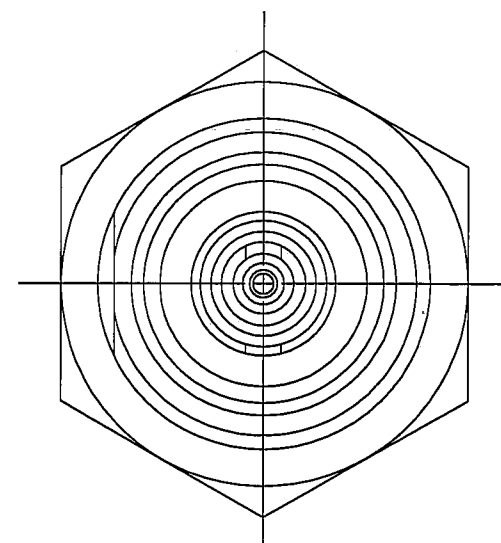
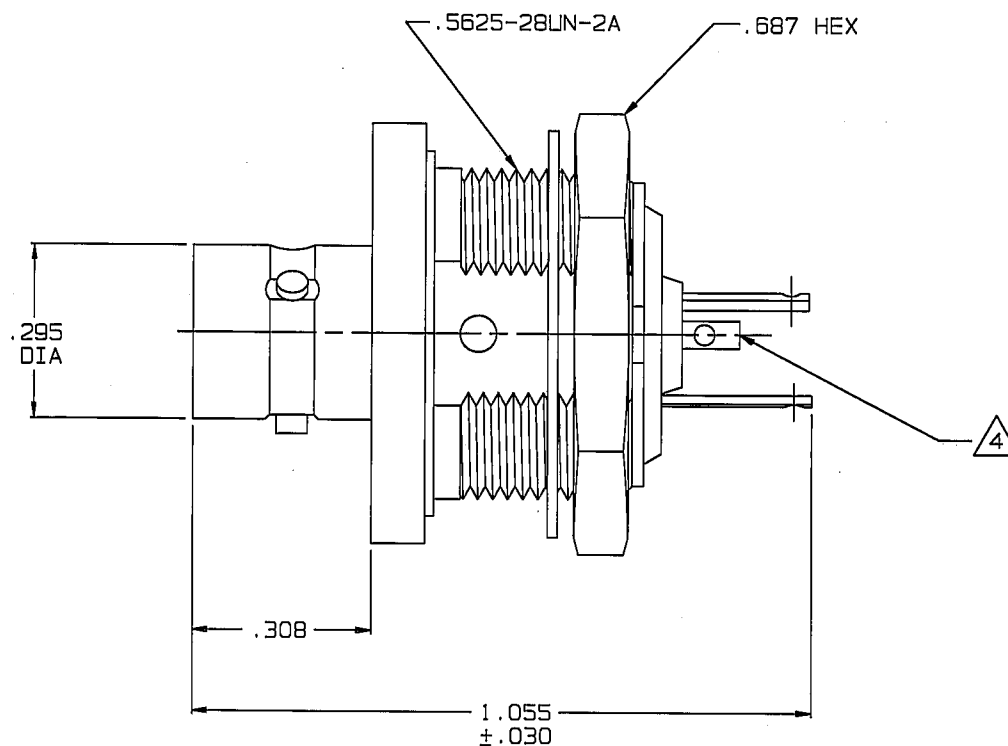
REVISIONS

3-0078

SH 1C

REV	DESCRIPTION	DATE	APPROVED
F	REVISED PER ECO #13860	2/20/01	WMark

RED INDICATES ORIGINAL



RECOMMENDED
 PANEL CUTOUT
 SCALE: 2/1

5. INSULATED 3-LUG SUBMINIATURE TRIAXIAL SOLDER
 POT BULKHEAD MOUNT RECEPTACLE (TPS STYLE)

4. SOLDER POT ACCEPTS .034 MAX DIA CONDUCTOR

3. MAX PANEL THK: .208

2. FINISH: TFS-1A (NICKEL)

1. ALL DIMENSIONS ARE IN INCHES

INTERPRET DRAWING PER
 MIL-STD-100
 DIMENSIONS ARE IN INCHES
 AND INCLUDE FINISH THICKNESS
 UNLESS OTHERWISE SPECIFIED

TOL: UNLESS SPECIFIED
 .XX ±
 .XXX ± .005
 .XXXX
 ANGLES



DRAWN
 R L 2/13/01

MATERIAL:

TITLE:
 BJ152

CHECKED
 WMark 2/16/01

FINISH:

SIZE	CAGE CODE	DRAWING NO.	REV.
A	14949	3-0078	F

APPROVED
 WMark 2/16/01

SCALE	DATE	SHEET
3/1	3/29/83	1C

CAD FILE NO.
 3-0078F1

DO NOT SCALE DWG

NEXT ASSY