



Chipsmall Limited consists of a professional team with an average of over 10 year of expertise in the distribution of electronic components. Based in Hongkong, we have already established firm and mutual-benefit business relationships with customers from,Europe,America and south Asia,supplying obsolete and hard-to-find components to meet their specific needs.

With the principle of “Quality Parts,Customers Priority,Honest Operation,and Considerate Service”,our business mainly focus on the distribution of electronic components. Line cards we deal with include Microchip,ALPS,ROHM,Xilinx,Pulse,ON,Everlight and Freescale. Main products comprise IC,Modules,Potentiometer,IC Socket,Relay,Connector.Our parts cover such applications as commercial,industrial, and automotives areas.

We are looking forward to setting up business relationship with you and hope to provide you with the best service and solution. Let us make a better world for our industry!



## Contact us

Tel: +86-755-8981 8866 Fax: +86-755-8427 6832

Email & Skype: [info@chipsmall.com](mailto:info@chipsmall.com) Web: [www.chipsmall.com](http://www.chipsmall.com)

Address: A1208, Overseas Decoration Building, #122 Zhenhua RD., Futian, Shenzhen, China



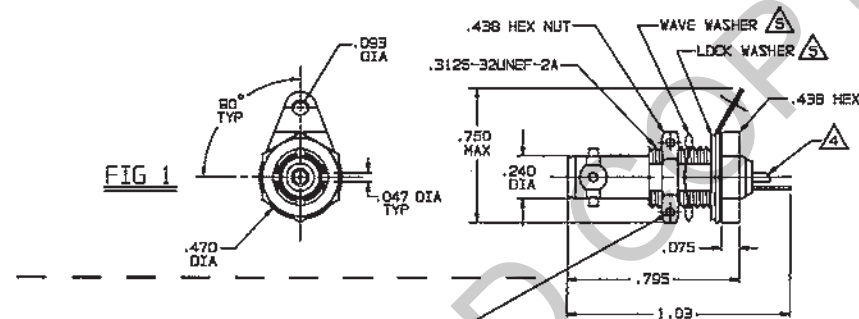
# RED INDICATES ORIGINAL

DATA CONTAINED ON THIS DOCUMENT IS PROPRIETARY TO TROMPETER ELECTRONICS, INC. AND SHALL NOT BE DISCLOSED, COPIED OR USED FOR REPRODUCTION OR MANUFACTURE WITHOUT EXPRESS WRITTEN PERMISSION.

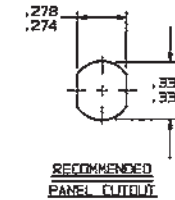
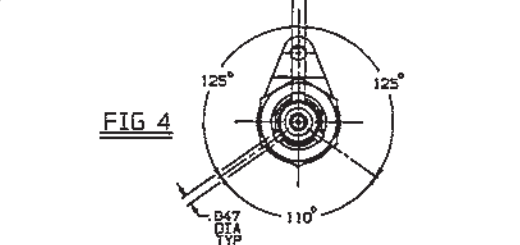
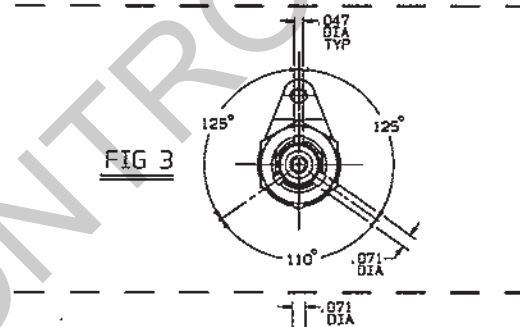
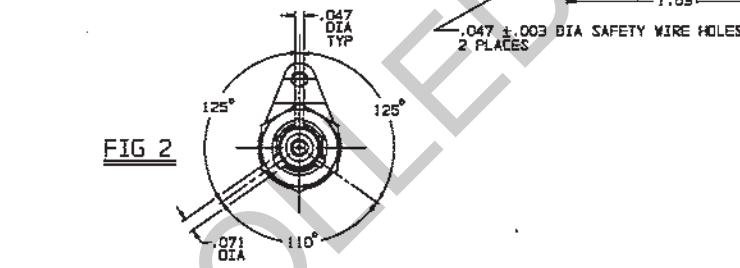
REVIEWS			3-0120	SH 1
REV	BY	DESCRIPTION	DWN	APPROVED
D	10049	.750 MAX WAS .717 ADDED SAFETY WIRE HOLES TO SH 1	OKC	BM, FOL
				9/1/94

DASH NO	MODEL NO	CENTER CONTACT/ INTERM CONTACT TYPE
-1	BJ450FLP	SOCKET/PIN
-2	BJ450FLS	PIN/SOCKET
-3	BJ450PP	SOCKET/PIN
-4	BJ450PS	PIN/SOCKET
-5	BJ450RP	SOCKET/PIN
-6	BJ450RS	PIN/SOCKET
-7	BJ450WP	SOCKET/PIN
-8	BJ450WS	PIN/SOCKET

INCH	MM
.010	0.25
.026	0.66
.03	0.76
.047	1.19
.071	1.80
.075	1.91
.093	2.36
.130	3.30
.240	6.10
.274	6.98
.278	7.08
.330	8.38
.335	8.51
.438	11.13
.470	11.94
.750	19.05
.795	20.19
1.03	26.18



-1 SHOWN



## 7. EXAMPLE OF COMPLETE MODEL NO:

BJ450 W P  
BASIC MODEL NO  
LUG POLARIZATION  
FL = 4-LUG, FIG 1  
P = 3-LUG, FIG 2  
R = 3-LUG, FIG 3  
W = 3-LUG, FIG 4  
CENTER & INTERMEDIATE CONTACT TYPE

## 8. EXAMPLE OF COMPLETE PART NO:

3-0120 -1  
BASIC PART NO DASH NO

MAX PNL THK .130 WITH EITHER LOCK WASHER OR WAVE WASHER

SOLDER PNT ACCEPTS .028 MAX DIA CONDUCTOR

CONCENTRIC TWINAX NONINSULATED BULKHEAD MOUNT RECEPTACLE, SOCKET CENTER CONTACT AND PIN INTERMEDIATE CONTACT OR PIN CENTER CONTACT AND SOCKET INTERMEDIATE CONTACT

FINISH: TFS-111 (500 HRS SALT SPRAY)

ALL DIM ARE IN INCHES

QTY	DESCRIPTION	PART NUMBER	ITEM
TOL UNLESS SPECIFIED			
.XX ± .03			
.XXX ± .010			
.XXXX ± .0005			
UNLESS			
DWN OKC 8-19-84	MATERIAL	CODE IDENT	DRAWING NO.
CHK BM 8-31-94			3-0120
ENGR			REV
APPR FOL 9/1/94	SCALE 2/1	DATE 5-21-87	SHEET 1 OF 2

NEXT ASSY