



Chipsmall Limited consists of a professional team with an average of over 10 year of expertise in the distribution of electronic components. Based in Hongkong, we have already established firm and mutual-benefit business relationships with customers from,Europe,America and south Asia,supplying obsolete and hard-to-find components to meet their specific needs.

With the principle of “Quality Parts,Customers Priority,Honest Operation,and Considerate Service”,our business mainly focus on the distribution of electronic components. Line cards we deal with include Microchip,ALPS,ROHM,Xilinx,Pulse,ON,Everlight and Freescale. Main products comprise IC,Modules,Potentiometer,IC Socket,Relay,Connector.Our parts cover such applications as commercial,industrial, and automotives areas.

We are looking forward to setting up business relationship with you and hope to provide you with the best service and solution. Let us make a better world for our industry!




Contact us

Tel: +86-755-8981 8866 Fax: +86-755-8427 6832

Email & Skype: info@chipsmall.com Web: www.chipsmall.com

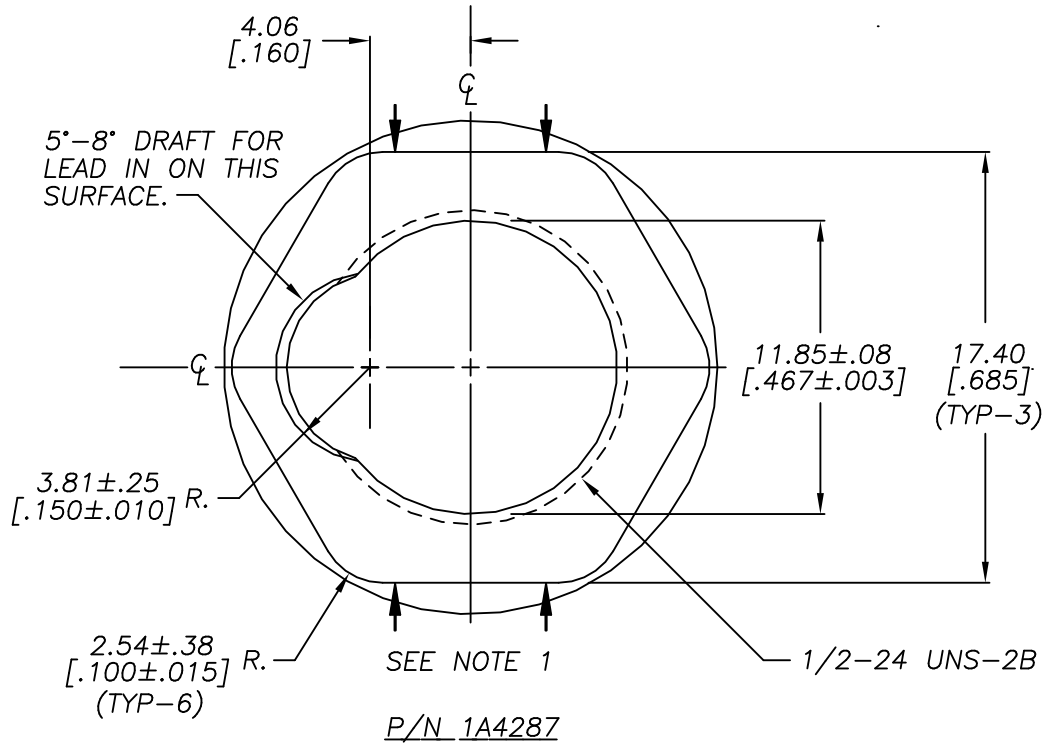
Address: A1208, Overseas Decoration Building, #122 Zhenhua RD., Futian, Shenzhen, China



TITLE		PLASTIC NUT		DATE	10-28-09	NO.	1A4287	REV.	T
DWG.	CK.	 St. Louis, MO 63178		SUP. NO.	1A4287 S	DATED	6-26-07	SUPERSEDES	
JG				BU-N09095					

PAGE 1

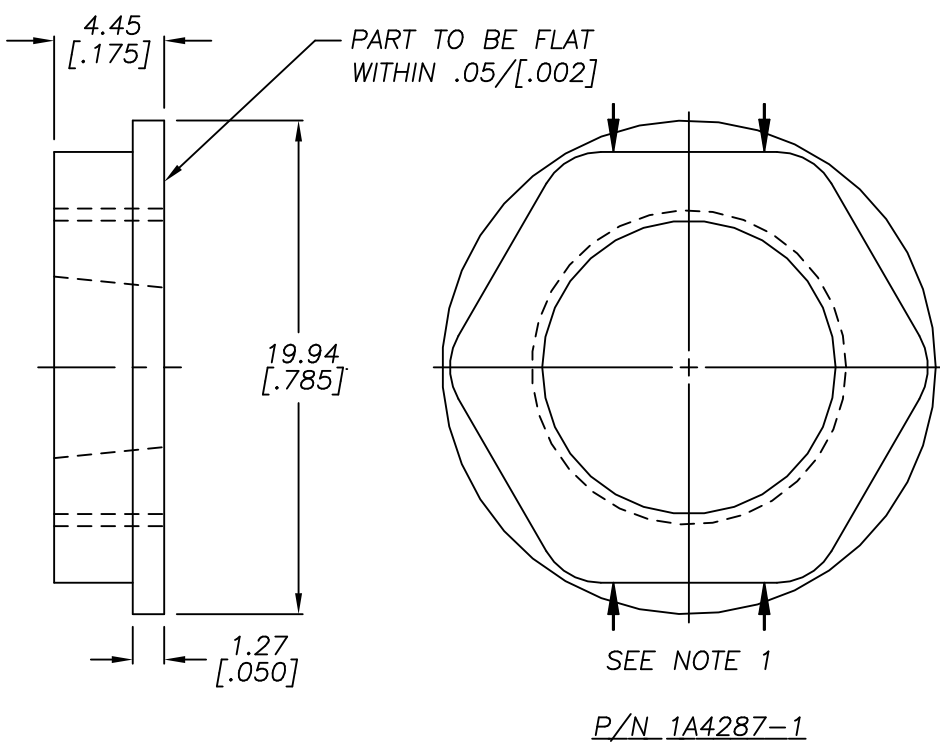
USED ON FUSEHOLDERS HJM, HKM, HKP & HTB



J	N	CONFIDENTIAL THE INFORMATION CONTAINED IN THIS DOCUMENT IS THE PROPERTY OF COOPER INDUSTRIES, INC. IT IS NOT FOR PUBLIC DISCLOSURE. PERMISSION OF THE INFORMATION DOES NOT CONVEY ANY RIGHT TO COPY, REPRODUCE OR USE OF THE INFORMATION FOR UNAUTHORIZED REPRODUCTION OR USE OF THE INFORMATION IS PROHIBITED. THIS DOCUMENT IS TO BE RETURNED TO COOPER INDUSTRIES, INC. UPON COMPLETION OF THE PURPOSE FOR WHICH IT IS LOANED OR UPON REQUEST. COPYRIGHT Cooper Industries, Inc. This is an unpublished work. The disclosure of this work is limited to select personnel. Further dissemination or disclosure to the public is prohibited. This unpublished work is protected by Federal Copyright law and all rights thereunder are reserved by Cooper Industries, Inc.	SCALE	UNLESS OTHERWISE SPECIFIED TOLERANCES TO BE:	C/F NO. 79642
			3x	METRIC ± .13mm INCHES ± .005" ANGULAR ± 2°	
			INDICATES CRITICAL DIMENSION OR FEATURE	THIRD ANGLE PROJECTION	

INCHES (OR U.S. UNITS) IS THE PRIMARY UNIT OF MEASURE
METRIC(mm)
[INCHES]

PART FEATURES TO BE SYMMETRICAL ABOUT INDICATED CENTER LINE WITHIN .25 TYP RFS.
[.010]



SAME AS PART NUMBER 1A4287 EXCEPT IT DOES NOT CONTAIN 3.81/[.150] CUTOUT.

NOTES:

- 1) STRENGTH TEST - NUT MUST WITHSTAND A MINIMUM OF 30 LBS. OF FORCE APPLIED TO THE SURFACES INDICATED.