



Chipsmall Limited consists of a professional team with an average of over 10 year of expertise in the distribution of electronic components. Based in Hongkong, we have already established firm and mutual-benefit business relationships with customers from,Europe,America and south Asia,supplying obsolete and hard-to-find components to meet their specific needs.

With the principle of “Quality Parts,Customers Priority,Honest Operation,and Considerate Service”,our business mainly focus on the distribution of electronic components. Line cards we deal with include Microchip,ALPS,ROHM,Xilinx,Pulse,ON,Everlight and Freescale. Main products comprise IC,Modules,Potentiometer,IC Socket,Relay,Connector.Our parts cover such applications as commercial,industrial, and automotives areas.

We are looking forward to setting up business relationship with you and hope to provide you with the best service and solution. Let us make a better world for our industry!



Contact us

Tel: +86-755-8981 8866 Fax: +86-755-8427 6832

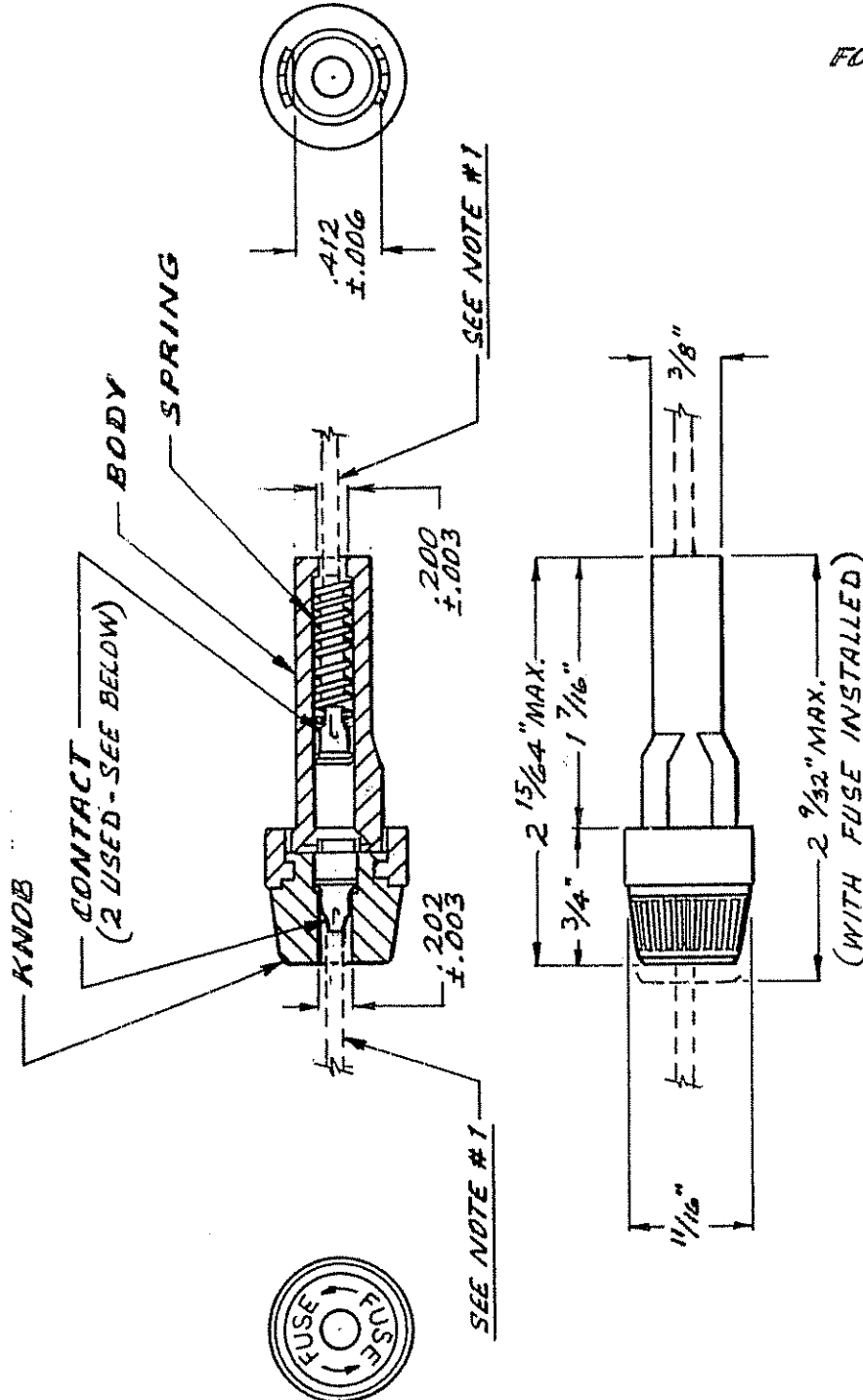
Email & Skype: info@chipsmall.com Web: www.chipsmall.com

Address: A1208, Overseas Decoration Building, #122 Zhenhua RD., Futian, Shenzhen, China



* THIS DOCUMENT CONTAINS CONFIDENTIAL AND TRADE SECRET INFORMATION WHICH IS THE PROPERTY OF BUSSMANN DIVISION OF COOPER INDUSTRIES, INC. AND RECEIPT OR POSSESSION DOES NOT CONVEY ANY RIGHTS TO LOAN, SELL OR OTHERWISE DISCLOSE SAID INFORMATION. REPRODUCTION OR USE OF SAID INFORMATION FOR ANY PURPOSE OTHER THAN THAT IN CONNECTION WITH WHICH SAID INFORMATION WAS SUPPLIED MAY NOT BE MADE WITHOUT EXPRESS WRITTEN PERMISSION OF BUSSMANN. THIS DOCUMENT IS TO BE RETURNED TO COOPER INDUSTRIES, INC. UPON REQUEST AND IN ALL EVENTS UPON COMPLETION OF THE PURPOSE FOR WHICH IT IS LOANED.	SCALE	UNLESS OTHERWISE SPECIFIED TOLERANCES TO BE DECIMAL $\pm .005"$ FRACTIONAL $\pm 1/64"$ ANGULAR $\pm 2^\circ$	DATE 8-6-03	NO. HHJ
	<input checked="" type="checkbox"/>		TITLE FUSE HOLDER	
	Δ INDICATES CRITICAL DIMENSION	SUP NO. HHJ	DATED 3-22-02	
PAGE 1 OF 2		DWG JB	CK JS	CHANGE F
Ⓢ REVISED & REDRAWN		ENG AM	NO3069	
		BUSSMANN St. Louis, Missouri 63178		
		DISTRIBUTION 56/J		

FOR: 1/4" DIA. X 1 1/4" LONG FUSES



NOTES:
 1.) CONTACTS STAKED TO LEADS BY CUSTOMER.
 2.) USE TINNEMAN NUT FOR PANEL MOUNTING.

PART NO.	CONTACT P/N	WIRE SIZE
HHJ-A	9838	#18 - #22
HHJ-B	9841	#12 - #16

Ⓢ REGULAR PACKAGING.
 BULK PACKAGING.