



Chipsmall Limited consists of a professional team with an average of over 10 year of expertise in the distribution of electronic components. Based in Hongkong, we have already established firm and mutual-benefit business relationships with customers from,Europe,America and south Asia,supplying obsolete and hard-to-find components to meet their specific needs.

With the principle of “Quality Parts,Customers Priority,Honest Operation,and Considerate Service”,our business mainly focus on the distribution of electronic components. Line cards we deal with include Microchip,ALPS,ROHM,Xilinx,Pulse,ON,Everlight and Freescale. Main products comprise IC,Modules,Potentiometer,IC Socket,Relay,Connector.Our parts cover such applications as commercial,industrial, and automotives areas.

We are looking forward to setting up business relationship with you and hope to provide you with the best service and solution. Let us make a better world for our industry!



Contact us

Tel: +86-755-8981 8866 Fax: +86-755-8427 6832

Email & Skype: info@chipsmall.com Web: www.chipsmall.com

Address: A1208, Overseas Decoration Building, #122 Zhenhua RD., Futian, Shenzhen, China



Surface Mountable RFI Filters

BLF Series



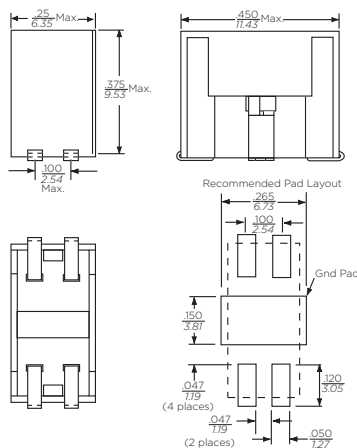
UL Recognized



BLF Series

- Specifically designed for the signal line
- Attenuates signals from 10 MHz to 1000 MHz
- Maximum attenuation at 40MHz to 400 MHz
- Unique U shaped low profile single piece filter
- Each filters two signal lines
- Stackable for performance over multiple lines.
- Withstands dielectric voltage of 1000 VAC for 60 seconds
- Can be used in conjunction with unfiltered RJ jacks, ganged jacks, or with filtered modular jacks for additional protection.

Dimensions



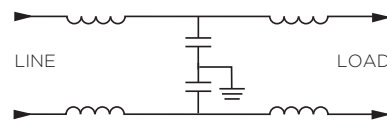
Available Part Numbers

BLF820	BLF082
--------	--------

Specifications

- Capacitors:**
 Type: Monolithic Ceramic Chip
 Standard Values:
 BLF820: 820 pF
 BLF082: 82 pF
 Standard Tolerance: ± 20%
- Ferrites:**
 Type: High resistivity, nickel zinc ceramic
 Inductance: 2 µH
- Housing Material:** Glass-filled polyester (UL94V-0)
- Dielectric Withstanding Voltage:**
 line to line and line to ground: 1000 VAC for 60 seconds
- Rated Current:** 2.2A max.
- Rated Voltage:** 56.6 volts max.

Electrical Schematic



Performance Data

Minimum Insertion Loss

Line to line (pass band) in 50 ohm circuit

@ 1 MHz	< 1 dB
@ 5MHz	<6 dB

Line to ground (stop band) in 50 ohm circuit

Model	Frequency – MHz								
	20	40	70	100	150	300	500	700	1000
BLF082	4	10	16	20	25	40	26	23	20
BLF820	20	30	40	50	40	31	25	22	13