



Chipsmall Limited consists of a professional team with an average of over 10 year of expertise in the distribution of electronic components. Based in Hongkong, we have already established firm and mutual-benefit business relationships with customers from,Europe,America and south Asia,supplying obsolete and hard-to-find components to meet their specific needs.

With the principle of “Quality Parts,Customers Priority,Honest Operation,and Considerate Service”,our business mainly focus on the distribution of electronic components. Line cards we deal with include Microchip,ALPS,ROHM,Xilinx,Pulse,ON,Everlight and Freescale. Main products comprise IC,Modules,Potentiometer,IC Socket,Relay,Connector.Our parts cover such applications as commercial,industrial, and automotives areas.

We are looking forward to setting up business relationship with you and hope to provide you with the best service and solution. Let us make a better world for our industry!



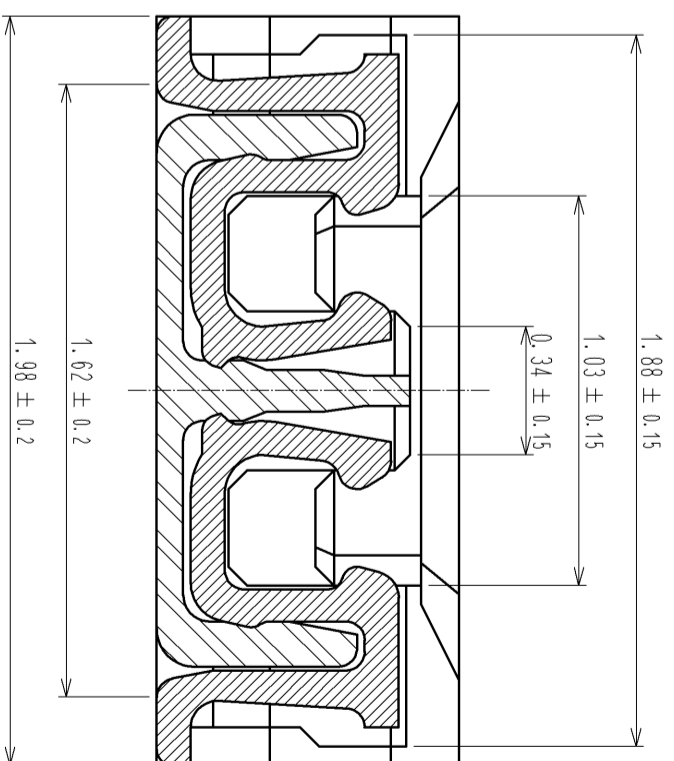
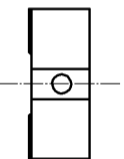
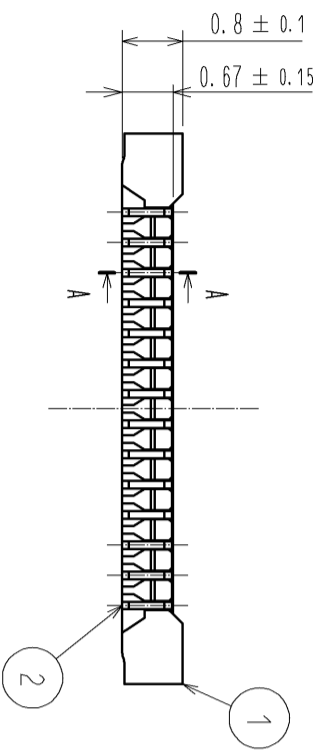
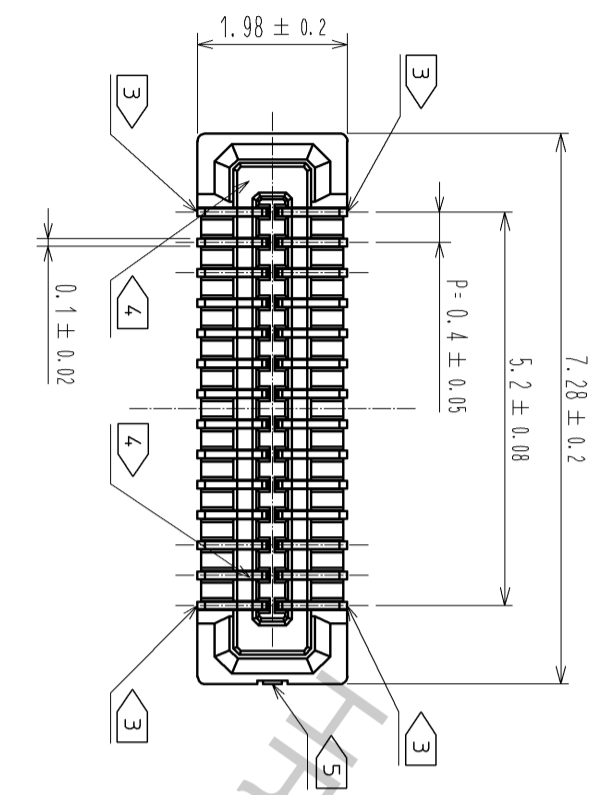
## Contact us

Tel: +86-755-8981 8866 Fax: +86-755-8427 6832

Email & Skype: info@chipsmall.com Web: www.chipsmall.com

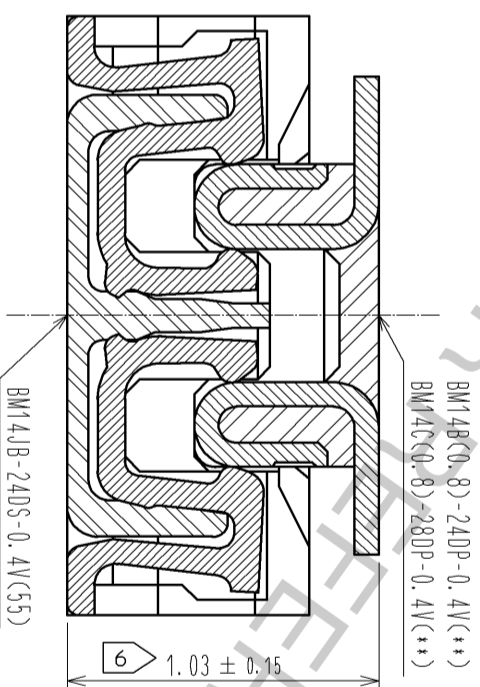
Address: A1208, Overseas Decoration Building, #122 Zhenhua RD., Futian, Shenzhen, China



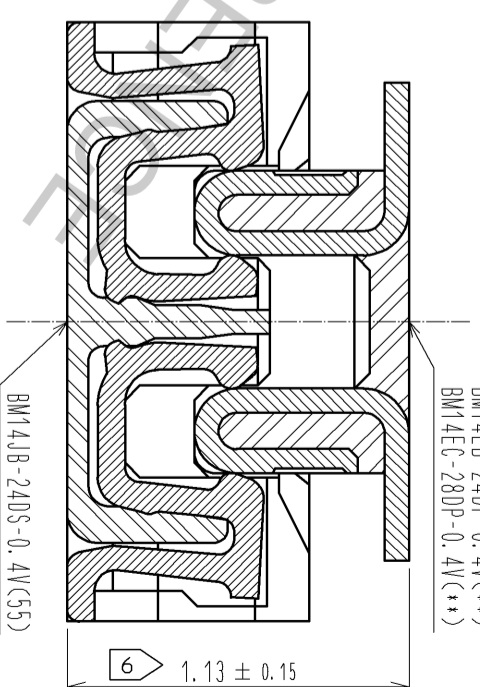


A-A (50:1)

ENGAGEMENT FIGURE (FREE)



ENGAGEMENT FIGURE (FREE)



NOTE) 1. ALL LEAD CO-PLANARITY SHALL BE 0.08mm MAX

2. CONTACT PLATING SPECIFICATIONS.

CONTACT AREA : GOLD 0.05 $\mu$ m MIN

SMT LEAD : GOLD 0.05 $\mu$ m MIN

UNDERPLATING : NICKEL 1 $\mu$ m MIN

( SURFACE : SEALING )

3. EACH CONTACTS AT 4 CORNERS ARE PROVIDED FOR METAL FITTINGS AND GROUNDING PURPOSE.

4. HRS MARK AND CAV NO. ARE INDICATED IN APPROX POSITION SHOWN.

5. GATE POSITION IS INDICATED IN APPROX POSITION SHOWN.

6. THE DIMENSIONS INDICATED IN THE FIGURE IS REFERENCE.

AN ELECTRIC PERFORMANCE IS GUARANTEED BY BEING MAINTAINED AS SHOWN IN THE FIGURE.

SPECIMEN	
BM14B(0.8)-24DP-0.4V(**)	BM14C(0.8)-28DP-0.4V(**)
BM14EB-24DP-0.4V(**)	BM14EC-28DP-0.4V(**)

FORM HCO011-5-7

NO.	MATERIAL	FINISH . REMARKS	NO.	MATERIAL	FINISH . REMARKS
3	PS	CLEAR(EMBOSSED CARRIER TAPE)	6	PS	CLEAR(REINFORCEMENT COLLAR)
2	PHOSPHOR BRONZE	2. CLEAR	5	PS	BLACK(PLASTIC REEL)
1	LCP	UL94 V-0, BLACK	4	POLYESTER	CLEAR(COVER TAPE)

UNITS	SCALE	COUNT	DESCRIPTION OF REVISIONS	DESIGNED	CHECKED	DATE
mm	10:1					

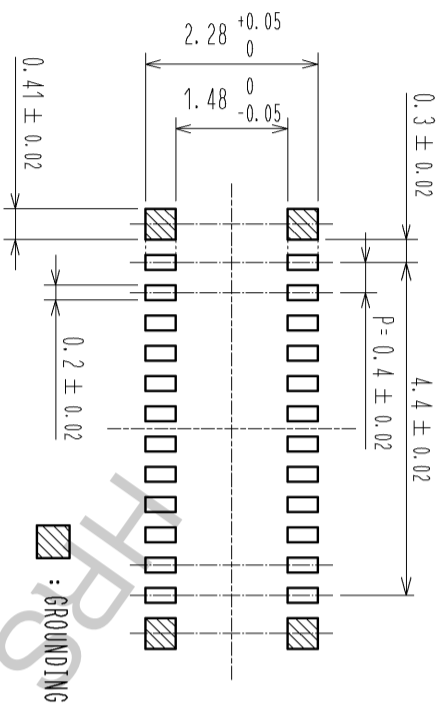
APPROVED : KH. IKEDA	11.07.04	DRAWING NO.	EDC3-331561-01
CHECKED : AR. TAKAHASHI	11.07.04	PART NO.	BM14JB-24DS-0.4V(55)
DESIGNED : SH. HOSODA	11.07.04	CODE NO.	CL684-8227-2-55
DRAWN : YN. SAKAMOTO	11.07.04		



HIROSE ELECTRIC CO., LTD.

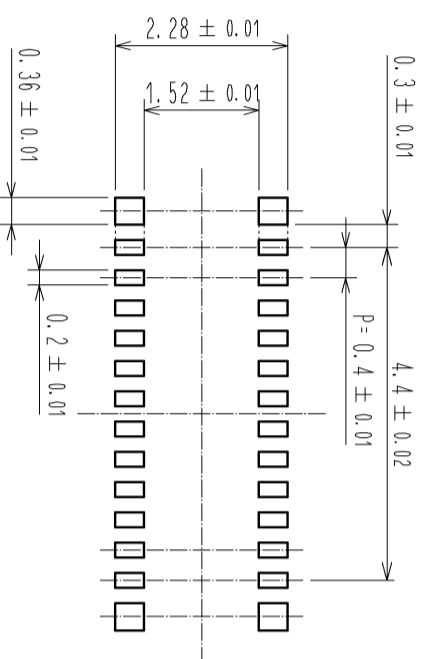
1

◆ RECOMMENDED PCB LAYOUT

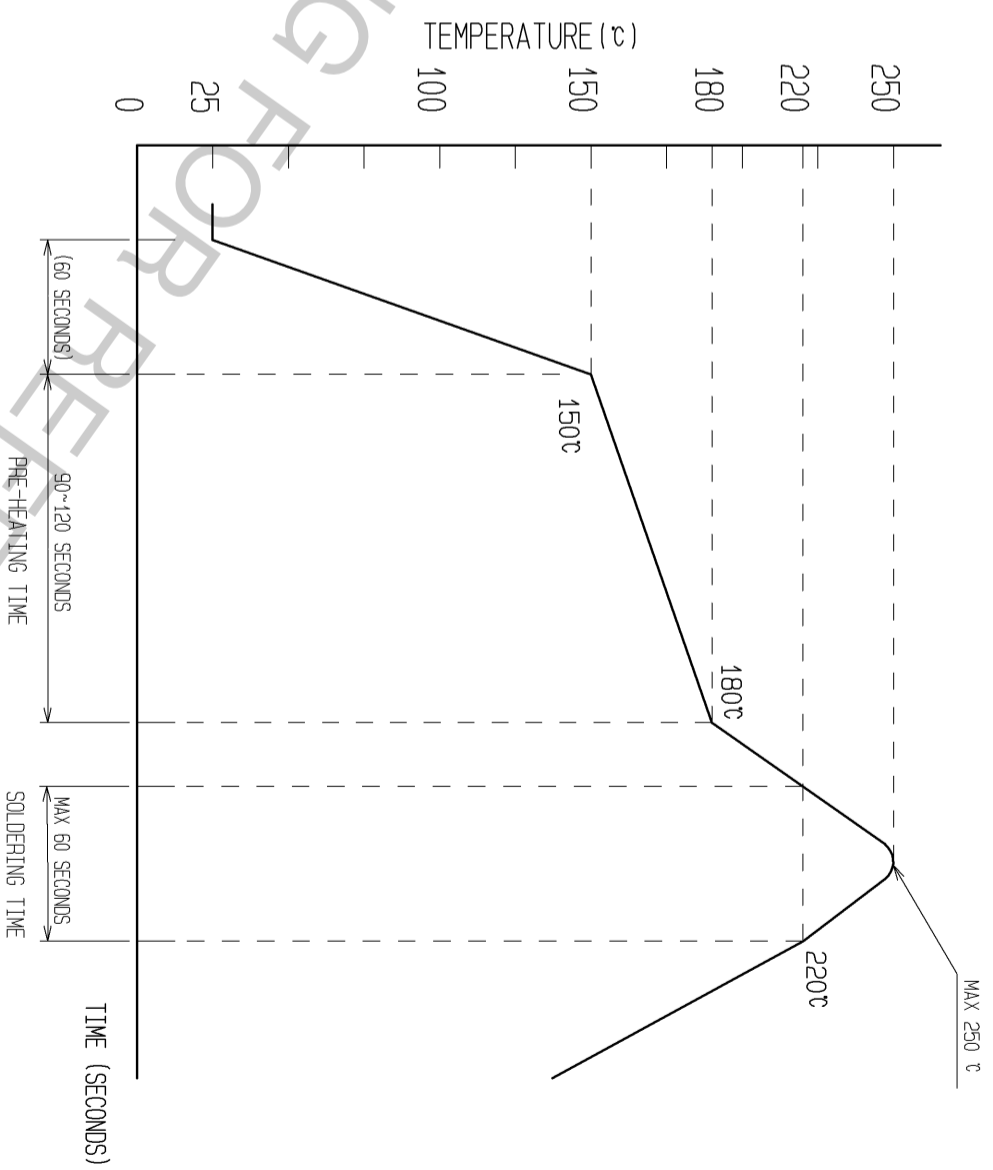


◆ RECOMMENDED METAL MASK DIMENSIONS

METAL MASK THICKNESS : 100 μm



▷ RECOMMENDED REFLOW TEMPERATURE PROFILE USING LEAD-FREE SOLDER PASTE.



- REFLOW METHOD: IR REFLOW  
 NUMBER OF REFLOW CYCLES: 2 CYCLES MAX.  
 1) REFLOW TIME  
 DURATION ABOVE 220°C: 60 SEC. MAX.  
 (PEAK TEMPERATURE: 250°C MAX)  
 2) PRE-HEAT TIME  
 PRE-HEAT TEMPERATURE(MIN): 150°C  
 PRE-HEAT TEMPERATURE(MAX): 180°C  
 PRE-HEAT TIME: 90-120 sec.

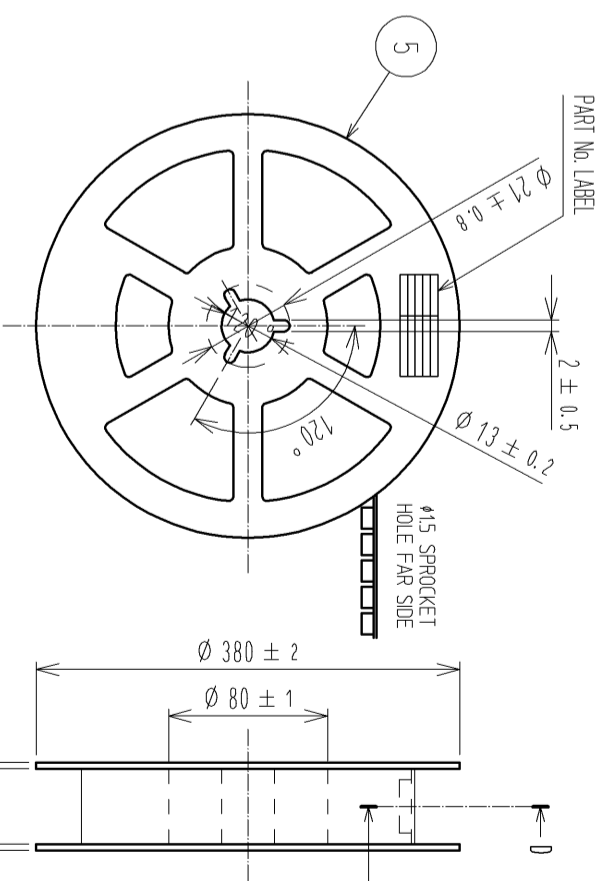
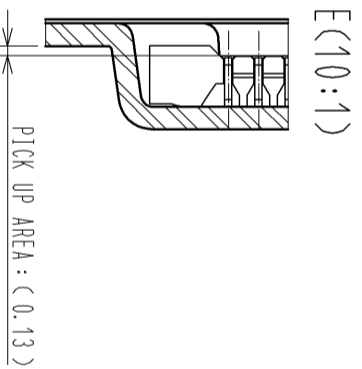
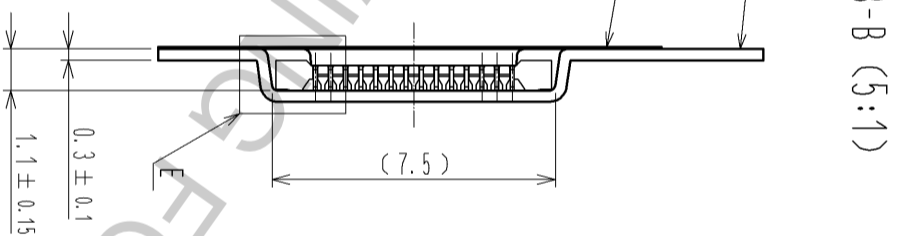
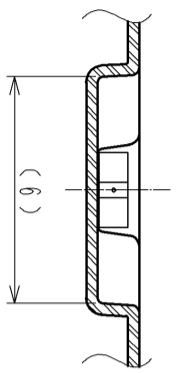
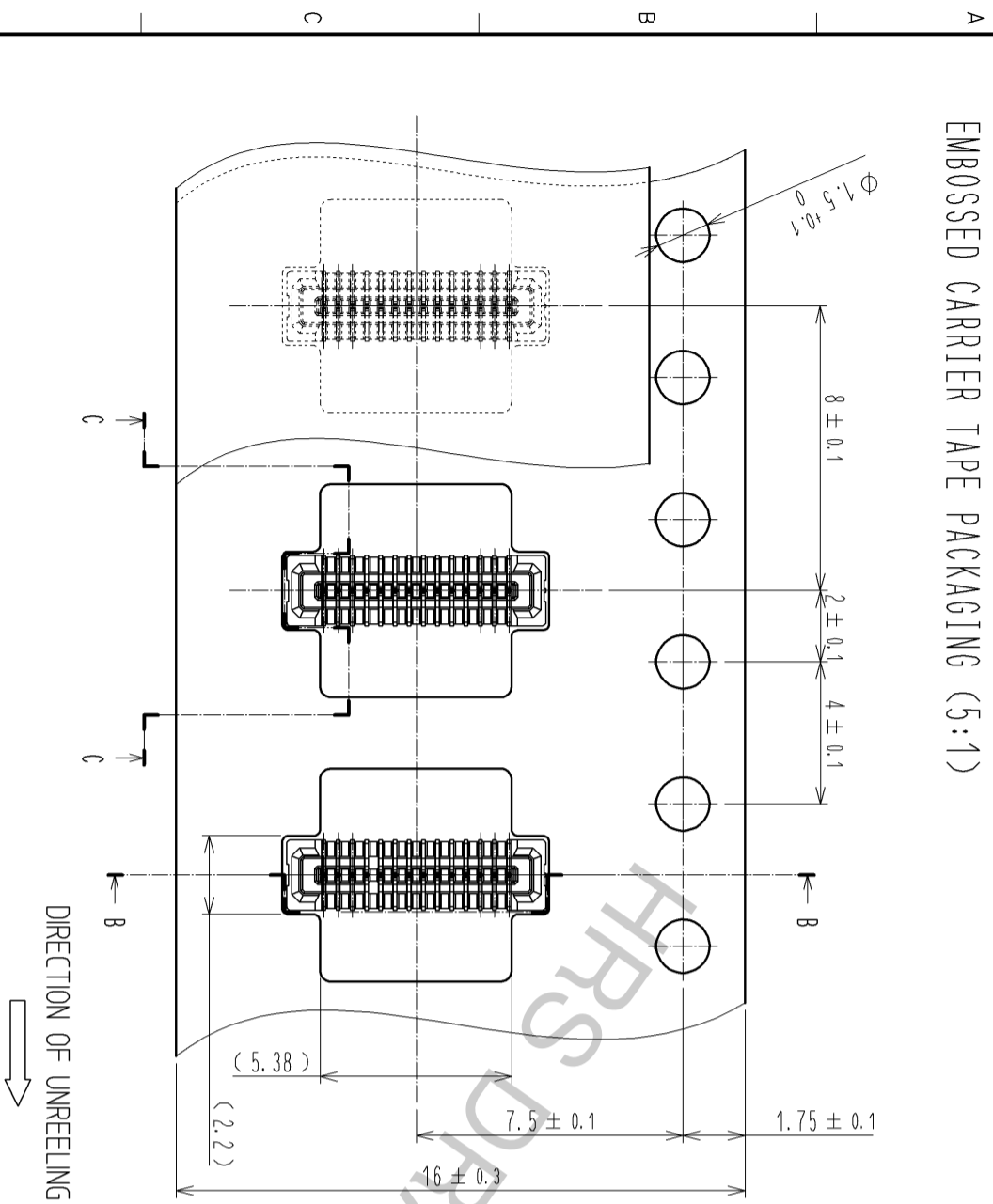
▷ THIS TEMPERATURE PROFILE IS PER THE CONDITIONS SHOWN ABOVE. ADDITIONAL FACTORS, SUCH AS SOLDER PASTE TYPE, PCB SIZE AND OTHER MOUNTED COMPONENTS COULD AFFECT THE PROFILE. THEREFORE, A THOROUGH EVALUATION OF MOUNTING CONDITION IS REQUIRED PRIOR TO PRODUCTION. TEMPERATURE IS MEASURED AT CONTACT LEAD.

**HRS**

DRAWING NO.	EDC3-331561-01
PART NO.	BM14JB-24DS-0.4V(55)
CODE NO.	CL684-8227-2-55

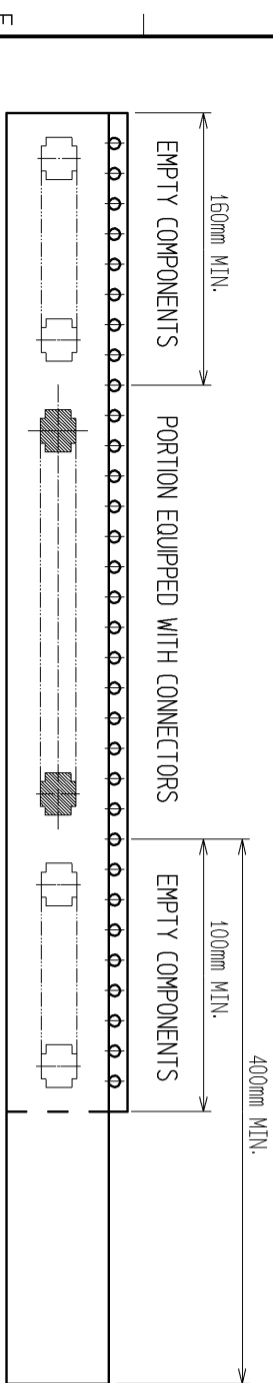
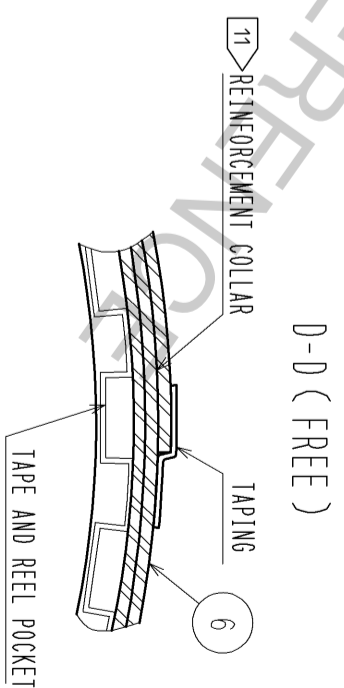
EMBOSSED CARRIER TAPE PACKAGING (5:1)

STYLE AND DIMENTION OF REEL (FREE)



DETAIL OF PART No. LABEL

SUPPLIER	HIROSE ELECTRIC CO., LTD.
QUANTITY	500
PART No.	BM14JB-24DS-0.4V(55)
CODE No.	CL0684-8227-2-55
DATE OF MANUFACTURED	*** ** **
製造年月日	*** ** **
製品コード	CL0684-8227-2-55
製品名	BM14JB-24DS-0.4V(55)
数量	500
納入者	ヒロセ電機(株)



TRAILER  $\rightarrow$  TAPING (FREE)

LEADER

- PER REEL 8000 CONNECTORS.
- THE DIMENSIONS IN PARENTHESES ARE FOR REFERENCE.
- REFER TO JIS C 0806(PACKAGING OF COMPONENTS FOR AUTOMATIC HANDLING) AFTER PACKAGING. ROLL 2 METERS OF THE REINFORCEMENT COLLAR TO OUTER CIRCUMFERENCE OF TAPE AND REEL POCKET, AND TAPE DOWN AT THE END THE COLLAR.

**HRS**

DRAWING NO.	EDC3-331561-01
PART NO.	BM14JB-24DS-0.4V(55)
CODE NO.	CL684-8227-2-55

3/3