



Chipsmall Limited consists of a professional team with an average of over 10 year of expertise in the distribution of electronic components. Based in Hongkong, we have already established firm and mutual-benefit business relationships with customers from,Europe,America and south Asia,supplying obsolete and hard-to-find components to meet their specific needs.

With the principle of “Quality Parts,Customers Priority,Honest Operation,and Considerate Service”,our business mainly focus on the distribution of electronic components. Line cards we deal with include Microchip,ALPS,ROHM,Xilinx,Pulse,ON,Everlight and Freescale. Main products comprise IC,Modules,Potentiometer,IC Socket,Relay,Connector.Our parts cover such applications as commercial,industrial, and automotives areas.

We are looking forward to setting up business relationship with you and hope to provide you with the best service and solution. Let us make a better world for our industry!



Contact us

Tel: +86-755-8981 8866 Fax: +86-755-8427 6832

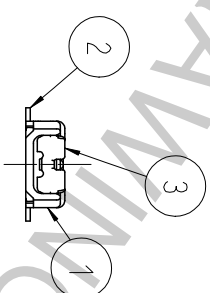
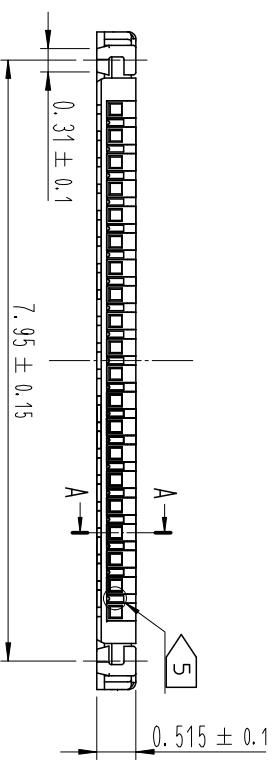
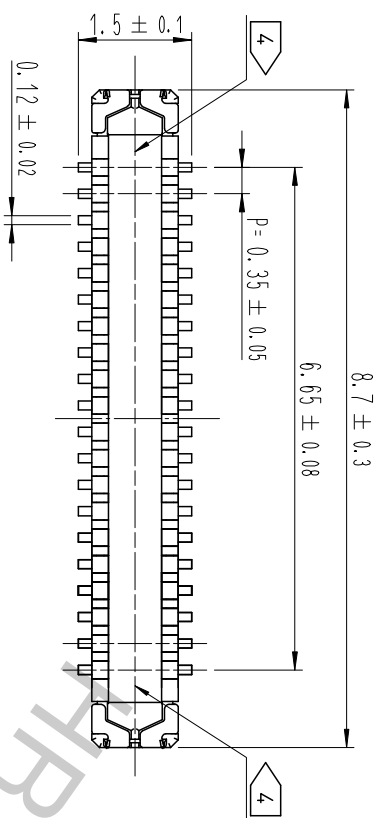
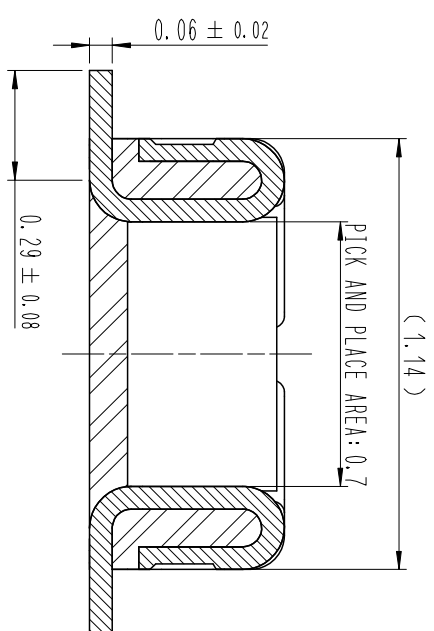
Email & Skype: info@chipsmall.com Web: www.chipsmall.com

Address: A1208, Overseas Decoration Building, #122 Zhenhua RD., Futian, Shenzhen, China



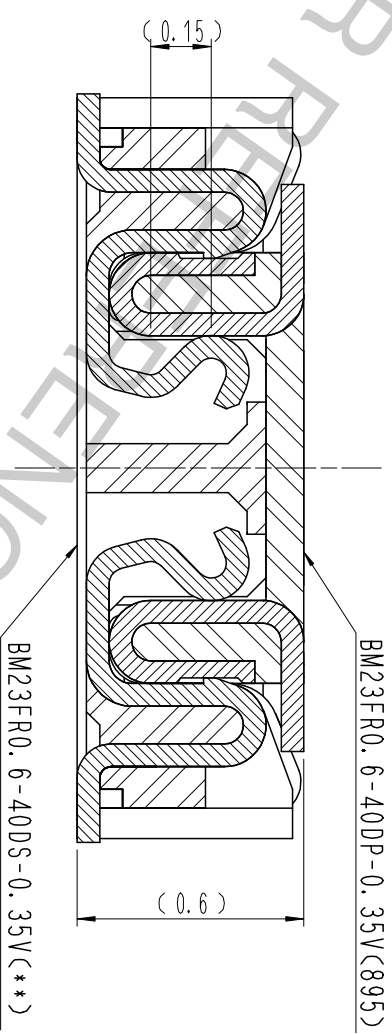
COUNT	DESCRIPTION OF REVISIONS	B Y	CHKD	DATE	COUNT	DESCRIPTION OF REVISIONS	B Y	CHKD	DATE
△				..	△				..
△				..	△				..
△				..	△				..

A-A (50:1)



ENGAGEMENT FIGURE (50:1)

DRAWING FOR REFERENCE
 This is subject to change without notice



NOTE
 1. ALL LEAD CO-PLANARITY SHALL BE 0.08mm MAX.

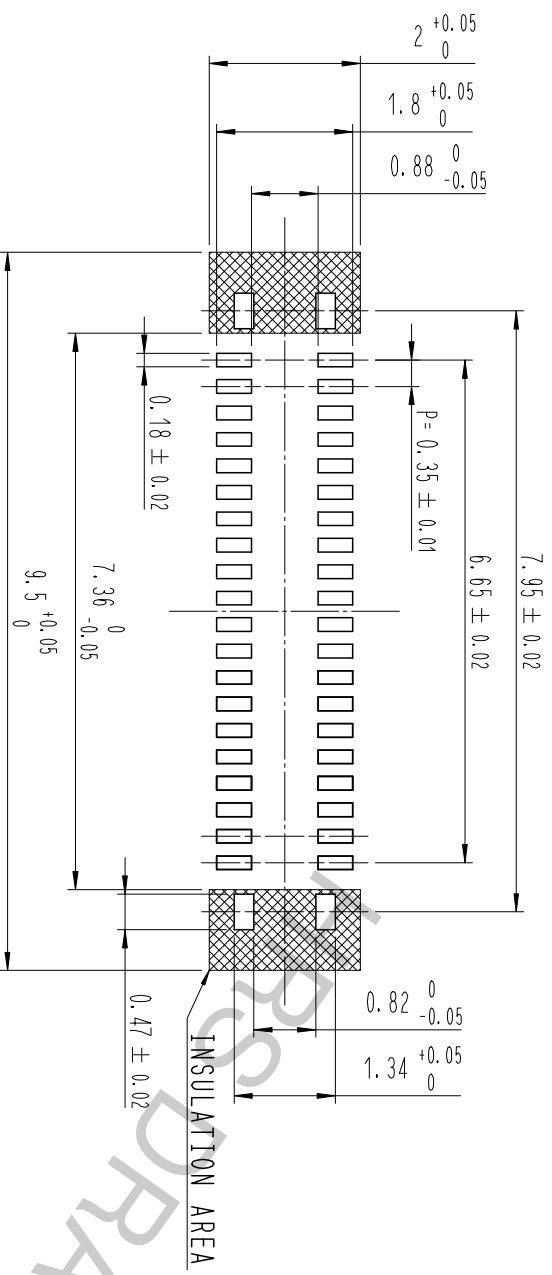
- 2. CONTACT PLATING SPECIFICATIONS.
 CONTACT AREA : GOLD 0.05 μm MIN.
 SMT LEAD : GOLD 0.05 μm MIN.
 UNDER PLATING : NICKEL 1 μm MIN.
 (SURFACE : SEALING)
- 3. METAL FITTING PLATING SPECIFICATIONS.
 SMT LEAD : GOLD 0.05 μm MIN.
 UNDERPLATING : NICKEL 1 μm MIN.
 (SURFACE : SEALING)
- 4. HRS MARK and CAV No. IS INDICATED IN APPROX POSITION SHOWN.
- 5. A PART OF THE WALL COULD BE NOTCHED.

NO.	MATERIAL	FINISH . REMARKS	NO.	MATERIAL	FINISH . REMARKS
4	PS	CLEAR (EMBOSSED CARRIER TAPE)	7	PS	CLEAR (REINFORCEMENT COLLAR)
3	COPPER ALLOY	3	PS	BLACK (PLASTIC REEL)	
2	COPPER ALLOY	2	PS	CLEAR (COVER TAPE)	
1	LCP	U94 V-0, BLACK	5	POLYESTER	

REMARKS	DRAWN	DESIGNED	CHECKED	APPROVED	RELEASED
	S. H. JUNG 17.05.08	S. H. JUNG 17.05.08	H. W. JO 17.05.08	T. S. KANG 17.05.08	17.05.08

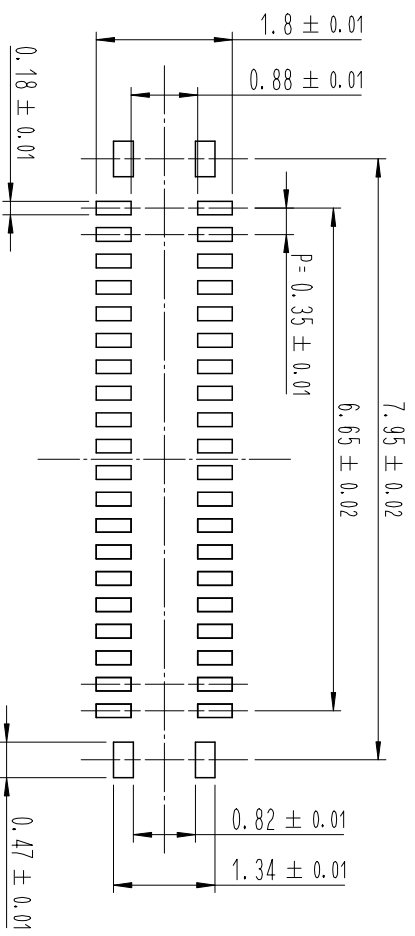
CODE NO. (OLD)	DRAWING NO.	PART NO.
	EDC3-632176	BM23FR0.6-40DP-0.35V(895)
SCALE		
10:1		
UNITS		
mm		
	HRS HIROSE KOREA CO., LTD.	
		CODE NO
		CL 6644-0082-9-895
		1
		3

7 RECOMMENDED PCB LAYOUT

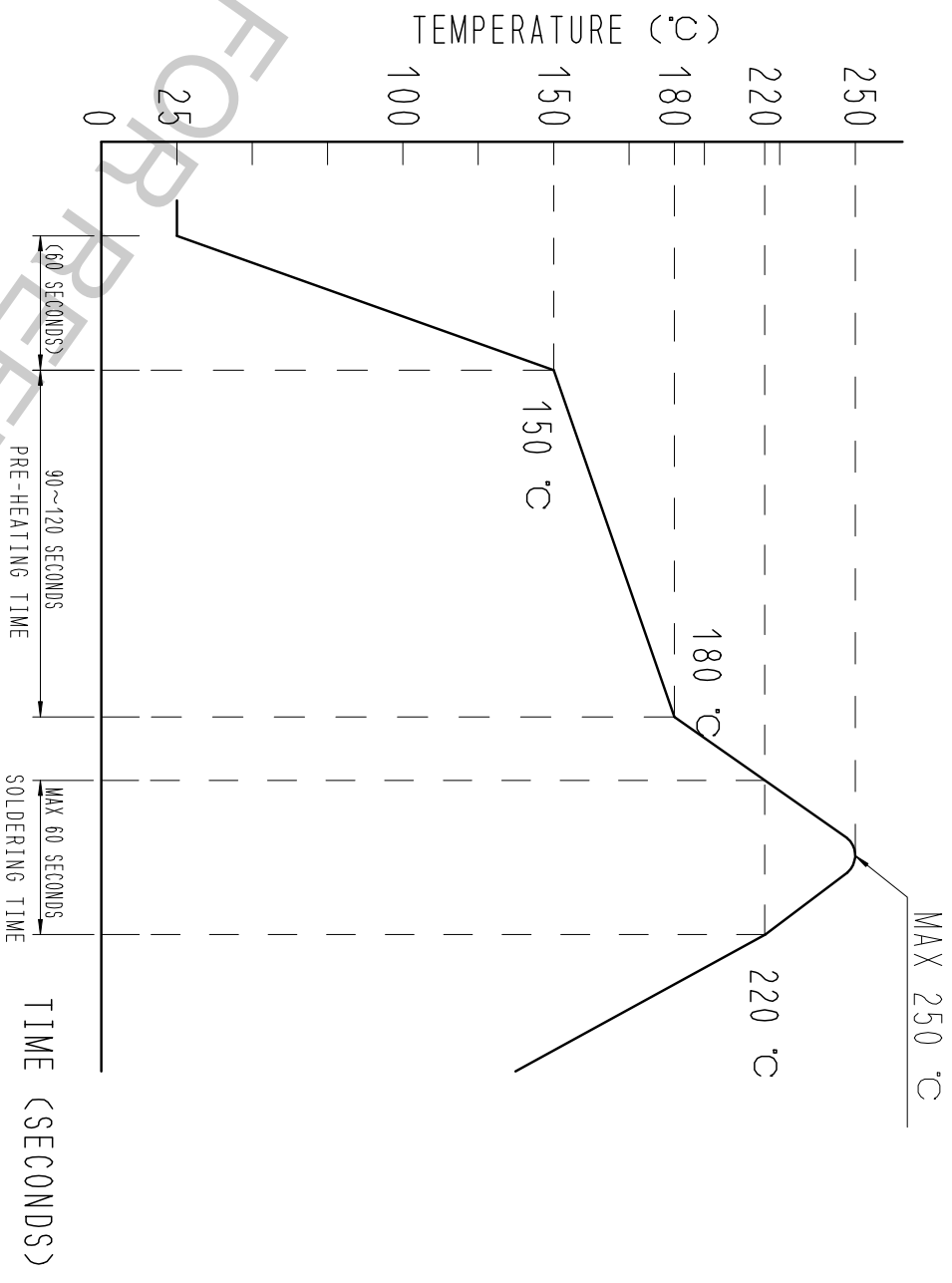


RECOMMENDED METAL MASK DIMENSIONS

METAL MASK THICKNESS : 100 μm



6 RECOMMENDED REFLOW TEMPERATURE PROFILE USING LEAD-FREE SOLDER PASTE.



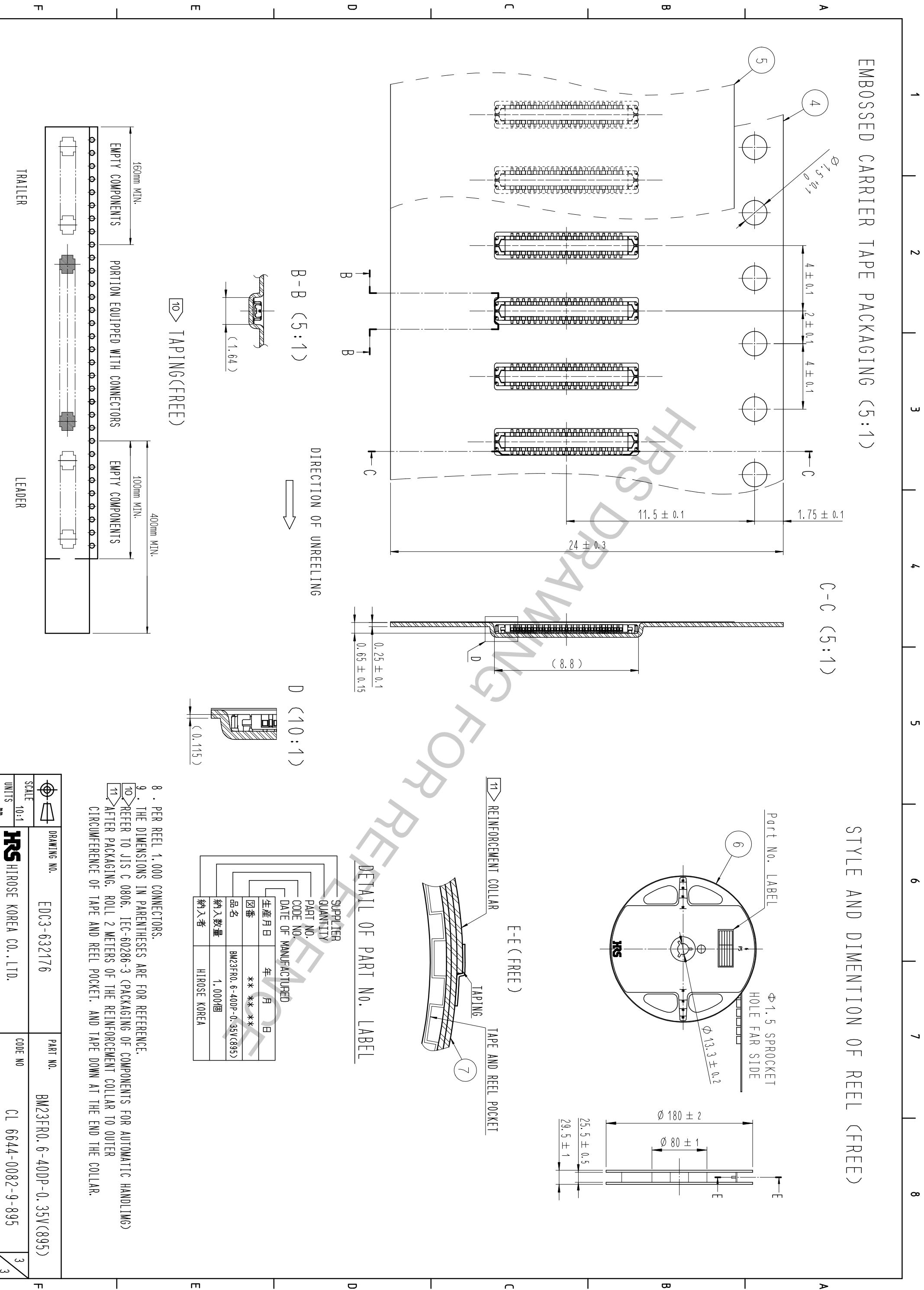
- REFLOW METHOD: N2 REFLOW
- NUMBER OF REFLOW CYCLES: 2 CYCLES MAX.
- 1) REFLOW TIME
 - DURATION ABOVE 220°C: 60 SEC MAX.
 - (PEAK TEMPERATURE: 250°C MAX)
- 2) PRE-HEAT TIME
 - PRE-HEAT TEMPERATURE(MIN): 150°C
 - PRE-HEAT TEMPERATURE(MAX): 180°C
 - PRE-HEAT TIME: 90-120 SEC.

- 6 THIS TEMPERATURE PROFILE IS PER THE CONDITIONS SHOWN ABOVE. ADDITIONAL FACTORS, SUCH AS SOLDER PASTE TYPE, PCB SIZE AND OTHER MOUNTED COMPONENTS COULD AFFECT THE PROFILE, THEREFORE, A THOROUGH EVALUATION OF MOUNTING CONDITION IS REQUIRED PRIOR TO PRODUCTION. TEMPERATURE IS MEASURED AT CONTACT LEAD.
- 7 PLEASE CONTACT US IN CASE YOU WILL MAKE DIFFERENT SETTINGS FROM OUR RECOMMENDATION.

	DRAWING NO.	EDC3-632176	PART NO.	BM23FR0.6-40DP-0.35V(895)
	SCALE	10:1	CODE NO	CL 6644-0082-9-895
UNITS	mm	HRS HIROSE KOREA CO., LTD.		2
				3

EMBOSSED CARRIER TAPE PACKAGING (5:1)

STYLE AND DIMENTION OF REEL (FREE)



DETAIL OF PART NO. LABEL

SUPPLIER	納入者	HIROSE KOREA
QUANTITY	納入数量	1,000個
PART NO.	品名	BM23FR0-6-40DP-0.35V(895)
CODE NO.	図番	** ** *
DATE OF MANUFACTURED	生産月日	年 月 日

8. PER REEL 1,000 CONNECTORS.
 9. THE DIMENSIONS IN PARENTHESES ARE FOR REFERENCE.
 10. REFER TO JIS C 0806, IEC-60286-3 (PACKAGING OF COMPONENTS FOR AUTOMATIC HANDLING) AFTER PACKAGING, ROLL 2 METERS OF THE REINFORCEMENT COLLAR TO OUTER CIRCUMFERENCE OF TAPE AND REEL POCKET, AND TAPE DOWN AT THE END THE COLLAR.
 11. REINFORCEMENT COLLAR

DRAWING NO.	EDC3-632176	PART NO.	BM23FR0-6-40DP-0.35V(895)
SCALE	10:1	CODE NO	CL 6644-0082-9-895
UNITS	mm		

HRS HIROSE KOREA CO., LTD.

3/3