



Chipsmall Limited consists of a professional team with an average of over 10 year of expertise in the distribution of electronic components. Based in Hongkong, we have already established firm and mutual-benefit business relationships with customers from,Europe,America and south Asia,supplying obsolete and hard-to-find components to meet their specific needs.

With the principle of “Quality Parts,Customers Priority,Honest Operation,and Considerate Service”,our business mainly focus on the distribution of electronic components. Line cards we deal with include Microchip,ALPS,ROHM,Xilinx,Pulse,ON,Everlight and Freescale. Main products comprise IC,Modules,Potentiometer,IC Socket,Relay,Connector.Our parts cover such applications as commercial,industrial, and automotives areas.

We are looking forward to setting up business relationship with you and hope to provide you with the best service and solution. Let us make a better world for our industry!



Contact us

Tel: +86-755-8981 8866 Fax: +86-755-8427 6832

Email & Skype: info@chipsmall.com Web: www.chipsmall.com

Address: A1208, Overseas Decoration Building, #122 Zhenhua RD., Futian, Shenzhen, China



**DESIGNED & DIMENSIONED
IN MILLIMETERS [INCHES]**

DO NOT
SCALE FROM
THIS PRINT

BNC7T-J-P-XX-ST-EMXD

GENDER
-J: JACK

TYPE
-P: PCB

TERMINATION
-EM1D: 1.57[.062] PCB
-EM2D: 2.29[.090] PCB

ORIENTATION
-ST: STRAIGHT

TABLE 1

ITEM	COMPONENT	-HN	*-MN	-GN
1	SUB ASSEMBLY	SUB-BNC7T-J-P-XX-ST-EMXD (SEE TABLE 2)		
2	NUT	BTNC-NUT-003-N		
3	LOCK WASHER	BTNC-LWAS-001-N		

* AVAILABLE TO EXISTING CUSTOMERS ONLY

PLATING SPECIFICATION

-HN: 30µ" GOLD CENTER CONTACT
100µ" NICKEL OUTER BODY CONTACT
100µ" NICKEL ON BODY

*-MN: 10µ" GOLD CENTER CONTACT
100µ" NICKEL OUTER BODY CONTACT
100µ" NICKEL ON BODY

-GN: 10µ" GOLD CENTER CONTACT
100µ" NICKEL OUTER BODY CONTACT
100µ" NICKEL ON BODY

* = FOR EXISTING CUSTOMERS ONLY

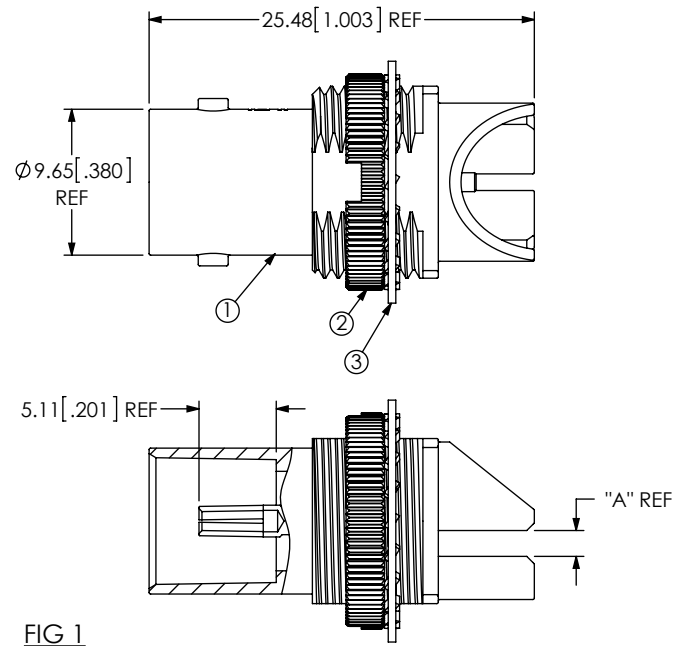
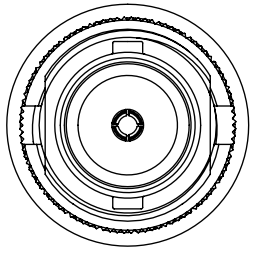
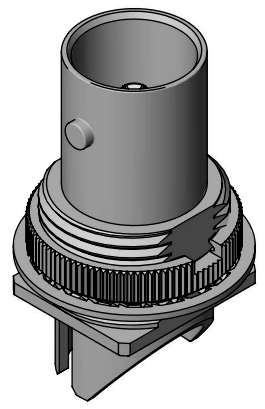
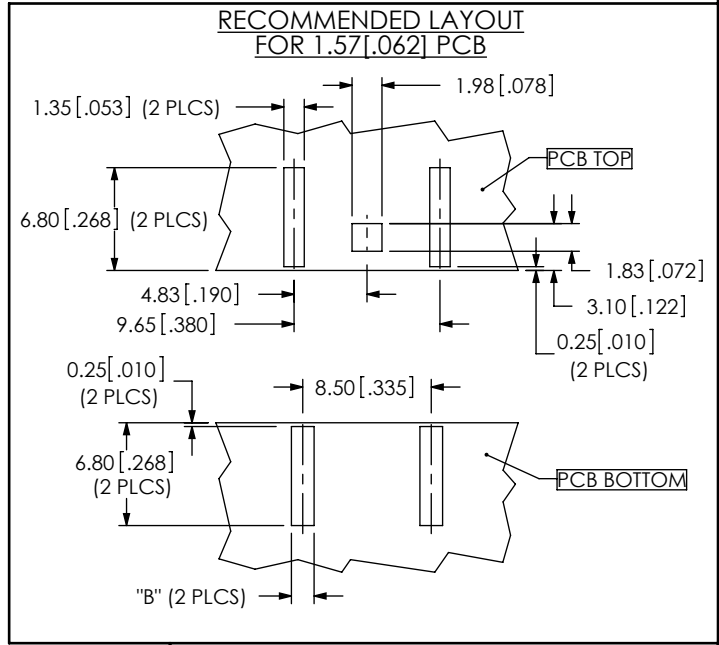


FIG 1
BNC7T-J-P-XX-ST-EM1D SHOWN



RECOMMENDED MOUNTING HOLE
4.00 [1.57] MAX PANEL THICKNESS

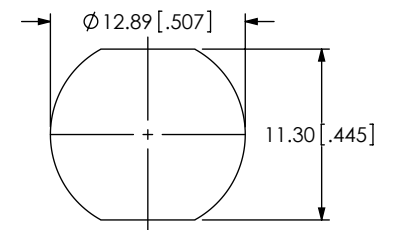


TABLE 2

	-HN	*-MN	-GN	"A"	"B"
-EM1D	SUB-BNC7T-J-P-HN-ST-EM1D	SUB-BNC7T-J-P-GN-ST-EM1D	SUB-BNC7T-J-P-GN-ST-EM1D	1.71	1.50
-EM2D	SUB-BNC7T-J-P-HN-ST-EM2D	SUB-BNC7T-J-P-GN-ST-EM2D	SUB-BNC7T-J-P-GN-ST-EM2D	2.44	1.65

* AVAILABLE TO EXISTING CUSTOMERS ONLY

NOTES:

- ⊗ REPRESENTS A CRITICAL DIMENSION.
- FABRICATED PARTS MUST BE FREE OF SCRATCHES, TOOL MARKS, ETC.
- SUPPLIER TO REMOVE BURRS.
- RoHS COMPLIANT.
- PRODUCT TO BE PACKAGED PER PACKAGING STANDARD CO-HD-WI-3033-M
- NOTE DELETED.
- NOTE DELETED.
- NOTE DELETED.

UNLESS OTHERWISE SPECIFIED,
DIMENSIONS ARE IN MILLIMETERS.
TOLERANCES ARE:
DECIMALS ANGLES
.X: ±0.3 [.01] 2°
.XX: ±0.13 [.005]
.XXX: ±0.051 [.0020]

PROPRIETARY NOTE
THIS DOCUMENT CONTAINS CONFIDENTIAL AND PROPRIETARY INFORMATION AND ALL DESIGN, MANUFACTURING, REPRODUCTION, USE, PATENT RIGHTS AND SALES RIGHTS ARE EXPRESSLY RESERVED BY SAMTEC, INC. THIS DOCUMENT SHALL NOT BE DISCLOSED, IN WHOLE OR PART, TO ANY UNAUTHORIZED PERSON OR ENTITY NOR REPRODUCED, TRANSFERRED OR INCORPORATED IN ANY OTHER PROJECT IN ANY MANNER WITHOUT THE EXPRESS WRITTEN CONSENT OF SAMTEC, INC.



520 PARK EAST BLVD, NEW ALBANY, IN 47150
PHONE: 812-944-6733 FAX: 812-948-5047
e-Mail: info@SAMTEC.com code: 55322

MATERIAL: SHELL: ZAMAK 3
NUT, WASHER: BRASS
CONTACT: COPPER ALLOY

DO NOT SCALE DRAWING SHEET SCALE: 2:1

DESCRIPTION:
BNC7T EDGE MOUNT DIE CAST STRAIGHT JACK

DWG. NO.
BNC7T-J-P-XX-ST-EMXD

BY: T. MEEK 11/17/2009 SHEET 1 OF 1