



Chipsmall Limited consists of a professional team with an average of over 10 year of expertise in the distribution of electronic components. Based in Hongkong, we have already established firm and mutual-benefit business relationships with customers from,Europe,America and south Asia,supplying obsolete and hard-to-find components to meet their specific needs.

With the principle of "Quality Parts,Customers Priority,Honest Operation,and Considerate Service",our business mainly focus on the distribution of electronic components. Line cards we deal with include Microchip,ALPS,ROHM,Xilinx,Pulse,ON,Everlight and Freescale. Main products comprise IC,Modules,Potentiometer,IC Socket,Relay,Connector.Our parts cover such applications as commercial,industrial, and automotives areas.

We are looking forward to setting up business relationship with you and hope to provide you with the best service and solution. Let us make a better world for our industry!



Contact us

Tel: +86-755-8981 8866 Fax: +86-755-8427 6832

Email & Skype: info@chipsmall.com Web: www.chipsmall.com

Address: A1208, Overseas Decoration Building, #122 Zhenhua RD., Futian, Shenzhen, China



DO NOT SCALE FROM THIS PRINT

DESIGNED & DIMENSIONED IN MILLIMETERS [INCHES]

BNC7T-J-P-XX-ST-TH2D
 GENDER -J: JACK
 TYPE -P: PCB
 TERMINATION -TH2D: DIE CAST THROUGH HOLE
 ORIENTATION -ST: STRAIGHT

PLATING SPECIFICATION
 -HN: HEAVY GOLD/NICKEL (SEE NOTES 6 & 7)
 (BNC7T-J-P-DN-ST-TH2-BDY-D)
 (BNC7T-J-P-ST-TH2-INS)
 (BNC7T-J-P-HN-ST-TH2-2PC-SKT)
 -GN: HEAVY GOLD/NICKEL (SEE NOTES 6 & 7)
 (BNC7T-J-P-DN-ST-TH2-BDY-D)
 (BNC7T-J-P-ST-TH2-INS)
 (BNC7T-J-P-GN-ST-TH2-2PC-SKT)

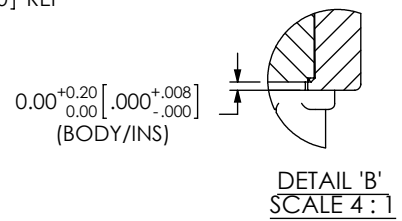
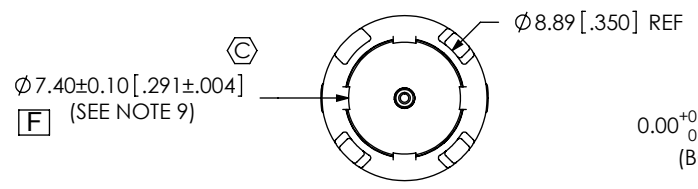
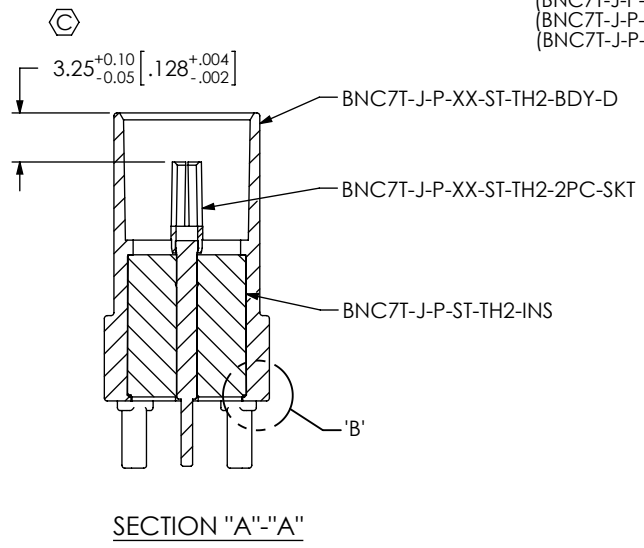
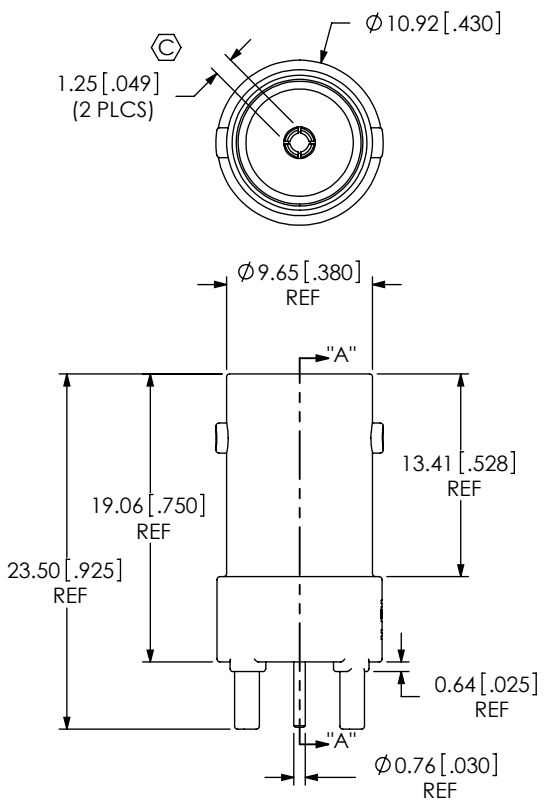

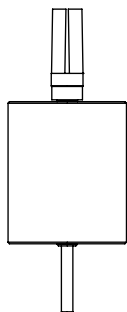


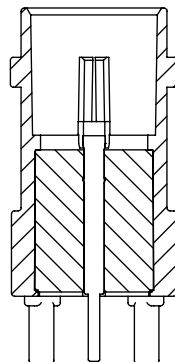
FIG 1
BNC7T-J-P-XX-ST-TH2D SHOWN

- NOTES:
- Ⓢ REPRESENTS A CRITICAL DIMENSION.
 - PUSHOUT FORCE FOR CENTER CONTACT: 26.69 N [6.0 LB] MIN.
 - PUSHOUT FORCE FOR INSULATOR: 53.38 N [12.0 LB] MIN.
 - SEE CO-HD-WI-3040-M RF PACKAGING STANDARD FOR PACKAGING INSTRUCTIONS.
PRODUCT TO BE PACKAGED IN TRAY TY-BNC001-1 WITH COVER TY-SMA001-2.
 - ROHS COMPLIANT.
 - PLATING: -H: .000030" MIN GOLD OVER .000050" MIN. NICKEL.
-G: .000010" MIN GOLD OVER .000050" MIN. NICKEL.
-N: .000100" MIN NICKEL.
 - ASSEMBLY PLATING DESIGNATIONS:
-HN: (CENTER CONTACT)-H
(OUTER CONTACT)-N
-GN: (CENTER CONTACT)-G
(OUTER CONTACT)-N
 - NOTE DELETED.
 - 0.10 [.004] BURR ALLOWED IN SPECIFIED AREA ONLY.

UNLESS OTHERWISE SPECIFIED DIMENSIONS ARE IN MILLIMETERS [INCHES] TOLERANCES ARE: DECIMALS ANGLES .X: ±0.3 [01] 2° .XX: ±0.13 [005] .XXX: ±0.051 [0020]	PROPRIETARY NOTE THIS DOCUMENT CONTAINS INFORMATION CONFIDENTIAL AND PROPRIETARY TO SAMTEC, INC. AND SHALL NOT BE REPRODUCED OR TRANSFERRED TO OTHER DOCUMENTS OR DISCLOSED TO OTHERS OR USED FOR ANY PURPOSE OTHER THAN THAT WHICH IT WAS OBTAINED WITHOUT THE EXPRESSED WRITTEN CONSENT OF SAMTEC, INC.	 520 PARK EAST BLVD, NEW ALBANY, IN 47150 PHONE: 812-944-6733 FAX: 812-948-5047 e-Mail: info@SAMTEC.com code 55322
MATERIAL: SHELL: ZINC CONTACT: COPPER ALLOY DIELECTRIC: PTFE	DO NOT SCALE DRAWING SHEET SCALE: 2:1	DESCRIPTION: TRUE 75OHM BNC ELEVATED STRAIGHT JACK DWG. NO. BNC7T-J-P-XX-ST-TH2D BY: D. PARMAR 10/21/2009 SHEET 1 OF 2

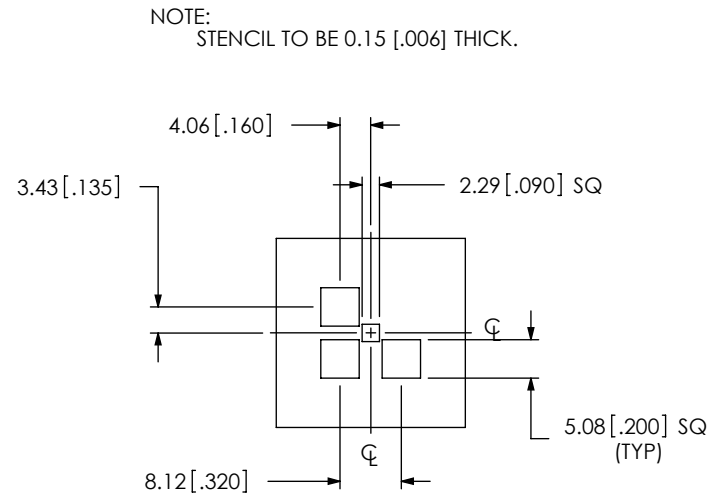


IN-PROCESS 1
INSERT CONTACT INTO INSULATOR

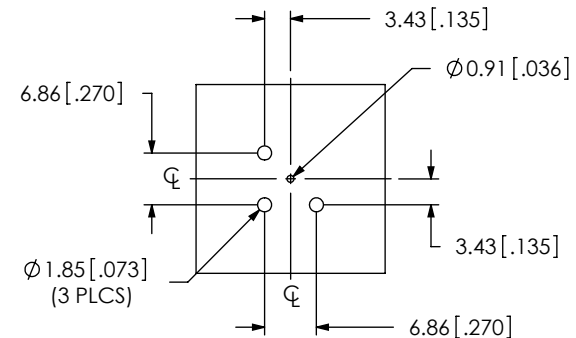


IN-PROCESS 2
INSERT INSULATOR INTO BODY
& SWAGE RETENTION TABS

CRITICAL DIMENSION INSPECTION INSTRUCTION TABLE		
ASSEMBLY OPERATION	START-UP INSPECTION INSPECT CODE A	IN-PROCESS INSPECTION INSPECT CODE B
INSERT PINS		C1
INSERT INSULATORS		C2, C3



RECOMMENDED STENCIL LAYOUT



RECOMMENDED PCB LAYOUT

PROPRIETARY NOTE

THIS DOCUMENT CONTAINS INFORMATION CONFIDENTIAL AND PROPRIETARY TO SAMTEC, INC. AND SHALL NOT BE REPRODUCED OR TRANSFERRED TO OTHER DOCUMENTS OR DISCLOSED TO OTHERS OR USED FOR ANY PURPOSE OTHER THAN THAT WHICH IT WAS OBTAINED WITHOUT THE EXPRESSED WRITTEN CONSENT OF SAMTEC, INC.



520 PARK EAST BLVD., NEW ALBANY, IN 47150
PHONE: 812-944-6733 FAX: 812-948-5047
e-Mail info@SAMTEC.com code 55322

SHEET SCALE: 2:1

DESCRIPTION:
TRUE 75OHM BNC ELEVATED STRAIGHT JACK

DWG. NO.
BNC7T-J-P-XX-ST-TH2D

BY: D. PARMAR 10/21/2009 SHEET 2 OF 2