



Chipsmall Limited consists of a professional team with an average of over 10 year of expertise in the distribution of electronic components. Based in Hongkong, we have already established firm and mutual-benefit business relationships with customers from,Europe,America and south Asia,supplying obsolete and hard-to-find components to meet their specific needs.

With the principle of “Quality Parts,Customers Priority,Honest Operation,and Considerate Service”,our business mainly focus on the distribution of electronic components. Line cards we deal with include Microchip,ALPS,ROHM,Xilinx,Pulse,ON,Everlight and Freescale. Main products comprise IC,Modules,Potentiometer,IC Socket,Relay,Connector.Our parts cover such applications as commercial,industrial, and automotives areas.

We are looking forward to setting up business relationship with you and hope to provide you with the best service and solution. Let us make a better world for our industry!



Contact us

Tel: +86-755-8981 8866 Fax: +86-755-8427 6832

Email & Skype: info@chipsmall.com Web: www.chipsmall.com

Address: A1208, Overseas Decoration Building, #122 Zhenhua RD., Futian, Shenzhen, China

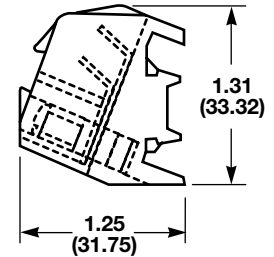
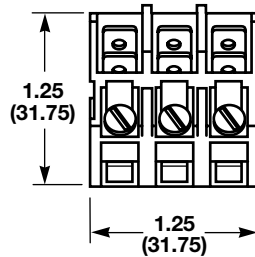
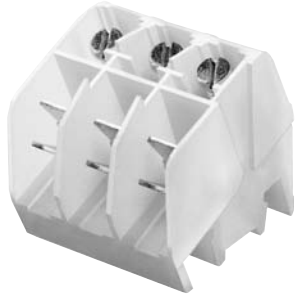


Quick Connect Terminal Blocks

NTQ23

SPECIFICATIONS:

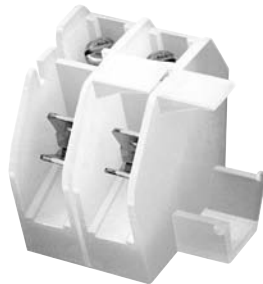
Rating: 40A, 600V
Center Spacing: .390" (9.91 mm)
Number Of Poles: 3
Circuits Per Foot: 28
Wire Range: AWG #8-22 CU
Screw Size: #8-32
Mounting Options: C-rail
Marking Tape: MT12-1/2
Torque Rating: 18 in-lb
Operating Temperature: 105°C



BNQ21

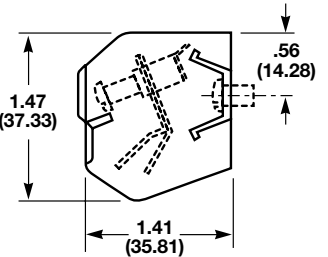
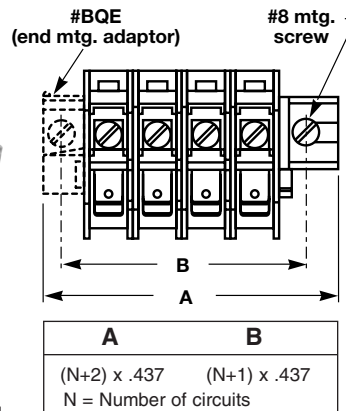
SPECIFICATIONS:

Rating: 40A, 600V; UL/CSA
Center Spacing: .437" (11.10 mm)
Number Of Poles: 1
Circuits Per Foot: 24
Wire Range: AWG #8-22 CU
Screw Size: #8-32
Quick Connects: .250" x .031"
Mounting Options: Base Mount
 Stackable; End Piece (Part No. BQE) is required for mounting. Mounting screws recommended every 8 circuits.
Torque Rating: 18 in-lb
Operating Temperature: 105°C



BQE

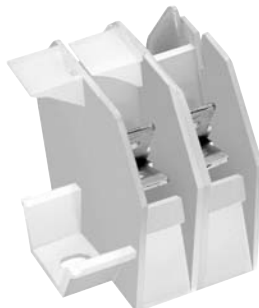
End Mounting Adapter Required



BQQ41

SPECIFICATIONS:

Rating: 30A, 600V; UL/CSA
Center Spacing: .437" (11.10 mm)
Number Of Poles: 1
Circuits Per Foot: 24
Wire Range: For use with quick connect terminals only.
Quick Connects: .250" x .031"
Mounting Options: Base Mount
 Stackable; End Piece (Part No. BQE) is required for mounting. Mounting screws recommended every 8 circuits.
Operating Temperature: 105°C



BQE

End Mounting Adapter Required

