



Chipsmall Limited consists of a professional team with an average of over 10 year of expertise in the distribution of electronic components. Based in Hongkong, we have already established firm and mutual-benefit business relationships with customers from,Europe,America and south Asia,supplying obsolete and hard-to-find components to meet their specific needs.

With the principle of “Quality Parts,Customers Priority,Honest Operation,and Considerate Service”,our business mainly focus on the distribution of electronic components. Line cards we deal with include Microchip,ALPS,ROHM,Xilinx,Pulse,ON,Everlight and Freescale. Main products comprise IC,Modules,Potentiometer,IC Socket,Relay,Connector.Our parts cover such applications as commercial,industrial, and automotives areas.

We are looking forward to setting up business relationship with you and hope to provide you with the best service and solution. Let us make a better world for our industry!



Contact us

Tel: +86-755-8981 8866 Fax: +86-755-8427 6832

Email & Skype: info@chipsmall.com Web: www.chipsmall.com

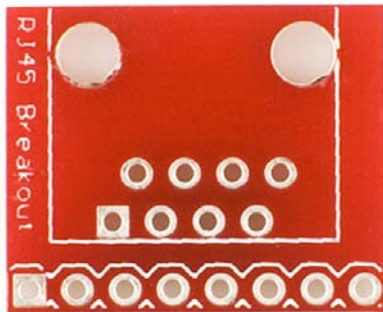
Address: A1208, Overseas Decoration Building, #122 Zhenhua RD., Futian, Shenzhen, China



SparkFun RJ45 Breakout

BOB-00716 ROHS ✓

★★★★★ 3



© images are CC BY-NC-SA 3.0

3D Download: STL, Blender

Description: RJ45 connectors are the kind that are used for Ethernet jacks, but they make great general purpose connectors when you need a lot of conductors. This is a small PCB that brings out the pins of the RJ45 connector to an in-line 0.1" footprint. Use with break-away headers for breadboarding or create your own RJ45 cable. Check the related items for Ethernet cable and connectors to go with it!

We used these connectors extensively in the Sound Squid demo!

Note: This is the **PCB only** - You can get the RJ45 connector in the related items below!

Dimensions: 0.7x0.8"