



Chipsmall Limited consists of a professional team with an average of over 10 year of expertise in the distribution of electronic components. Based in Hongkong, we have already established firm and mutual-benefit business relationships with customers from,Europe,America and south Asia,supplying obsolete and hard-to-find components to meet their specific needs.

With the principle of “Quality Parts,Customers Priority,Honest Operation,and Considerate Service”,our business mainly focus on the distribution of electronic components. Line cards we deal with include Microchip,ALPS,ROHM,Xilinx,Pulse,ON,Everlight and Freescale. Main products comprise IC,Modules,Potentiometer,IC Socket,Relay,Connector.Our parts cover such applications as commercial,industrial, and automotives areas.

We are looking forward to setting up business relationship with you and hope to provide you with the best service and solution. Let us make a better world for our industry!



Contact us

Tel: +86-755-8981 8866 Fax: +86-755-8427 6832

Email & Skype: info@chipsmall.com Web: www.chipsmall.com

Address: A1208, Overseas Decoration Building, #122 Zhenhua RD., Futian, Shenzhen, China





BP04KE



BP01KE



BP08KT

Easy Build-A-Switch

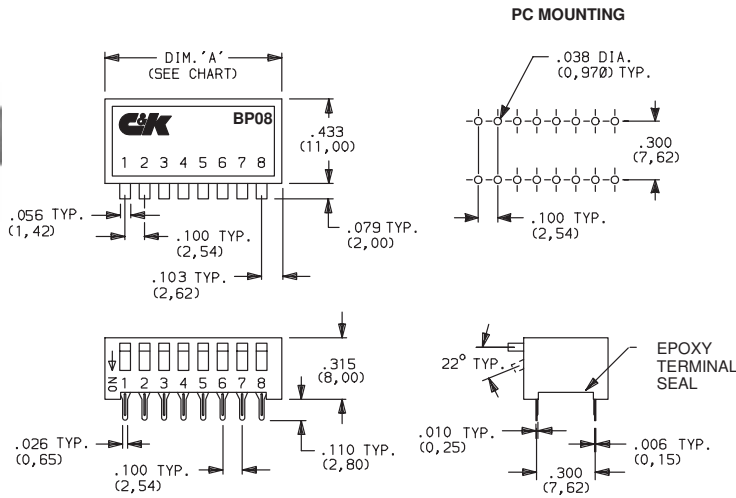
Below is a complete listing of available options for BP SERIES SIDE ACTUATED DIP SWITCHES. Build-A-Switch allows you to mix and match options to create the switch you need—simply select desired option from each category. All available options are shown on pages D-6. Dashes, hyphens or spaces in the part number are not significant and are shown for clarity only. Complete HOW TO ORDER information is at the end of this section, page D-7.

D

MODEL	SWITCH FUNCTION	CONTACT MATERIAL	SEAL
BP01	(NONE)	K	E
BP02	R	Y	T
BP03			
BP04			
BP05			
BP06			
BP07			
BP08			
BP10			
BP12			



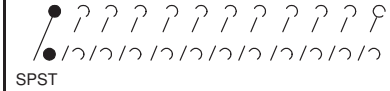
MODEL



Part No. Shown: BP08KE

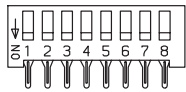
MODEL NO.	NO. POS.	DIM. 'A'
BP01	1	.206 (5,23)
BP02	2	.306 (7,77)
BP03	3	.406 (10,31)
BP04	4	.506 (12,85)
BP05	5	.606 (15,39)
BP06	6	.706 (17,93)
BP07	7	.806 (20,47)
BP08	8	.906 (23,00)
BP10	10	1.106 (28,09)
BP12	12	1.306 (33,17)

Schematic:



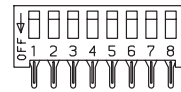
SWITCH FUNCTION

(NONE) (STD.) THROW



Actuator is DOWN in ON position, as shown.

R REVERSE THROW



Actuator is UP in ON position, as shown.

NOTE: All switches shipped in 'OFF' position standard.

CONTACT MATERIAL

OPTION CODE	CONTACT MATERIAL	TERMINAL PLATING	RATINGS	
K	GOLD ¹	TIN ²	LOW LEVEL / DRY CIRCUIT	CARRY: 100 mA max. @ 50 V DC; SWITCH: 100 mA max. @ 5 V DC or 25 mA max. @ 25 V DC.
Y	TIN ²	TIN ²		

¹ CONTACTS: Gold over nickel over phosphor bronze.

² CONTACTS & ALL TERMINALS: Phosphor bronze, tin plated.

SEAL

E (STD.) EPOXY TERMINAL SEAL, NO TAPE SEAL



T EPOXY TERMINAL SEAL, REMOVABLE TAPE ACTUATOR SEAL. SPLASH RESISTANT.





HOW TO ORDER

All available BP SERIES SIDE ACTUATED DIP SWITCH options are listed on page D-5, and are described on pages D-6. When selecting options and building a part number, some ordering format boxes may not be filled. Dashes, hyphens or spaces in the part number are not significant and are shown for clarity only.

SPECIFICATIONS

SWITCH FUNCTION: SPST - 1, 2, 3, 4, 5, 6, 7, 8, 10 & 12 positions available.

CONTACT RATING:

Carry: 100 mA max. @ 5 V DC.

Switch: 100 mA max. @ 5 V DC or 25 mA max. @ 25 V DC.

MECHANICAL & ELECTRICAL LIFE: 2,000 make-and-break cycles each circuit, models with gold contacts (K contact material). 1,000 cycles, models with tin contacts (Y contact material).

CONTACT RESISTANCE: Below 50 milliohms typ. initial @ 2-4 V DC, 100 mA.

INSULATION RESISTANCE: 10^9 ohms min.

DIELECTRIC STRENGTH: 500 V RMS min. @ sea level between adjacent terminals.

STORAGE & OPERATING TEMPERATURE: -20°C to 60°C.

SOLDERABILITY: Per MIL-STD-202F method 208D, or EIA RS-186E method 9 (1 hour steam aging).

PACKAGING: Switches supplied in rigid dispensing tubes in full-tube quantities only; this may affect order quantity. Number of switches per tube varies with model, consult factory. Switch position 1 denotes pin no. 1. All switch actuators in 'OFF' position standard.

MATERIALS

CASE: Glass filled polyester (PET), flame retardant (UL 94V-0).

COVER: Anodized aluminum.

ACTUATOR: Glass filled polyester (PET), flame retardant, (UL 94V-0).

CONTACTS: Gold over nickel over phosphor bronze (K contact material) or phosphor bronze, tin plated (Y contact material).

TERMINALS: Phosphor bronze, tin plated.

TERMINAL SEAL: Epoxy.

TAPE SEAL: Metalized polyester.

NOTE: Specifications and materials listed above are general specifications for switches with standard options. For information on specific and custom switches, consult factory.