



Chipsmall Limited consists of a professional team with an average of over 10 year of expertise in the distribution of electronic components. Based in Hongkong, we have already established firm and mutual-benefit business relationships with customers from,Europe,America and south Asia,supplying obsolete and hard-to-find components to meet their specific needs.

With the principle of “Quality Parts,Customers Priority,Honest Operation,and Considerate Service”,our business mainly focus on the distribution of electronic components. Line cards we deal with include Microchip,ALPS,ROHM,Xilinx,Pulse,ON,Everlight and Freescale. Main products comprise IC,Modules,Potentiometer,IC Socket,Relay,Connector.Our parts cover such applications as commercial,industrial, and automotives areas.

We are looking forward to setting up business relationship with you and hope to provide you with the best service and solution. Let us make a better world for our industry!



Contact us

Tel: +86-755-8981 8866 Fax: +86-755-8427 6832

Email & Skype: info@chipsmall.com Web: www.chipsmall.com

Address: A1208, Overseas Decoration Building, #122 Zhenhua RD., Futian, Shenzhen, China





VRLA Rechargeable Battery

BPL80-12



FEATURES

- Maintenance free(no water topping-up required).
- No free acid(Non-spillable battery).
- Low self-discharge rate, lower than 3% capacity loss per month.
- Can be used in any orientation(excluding used inverted).
- Filtered with explosion proof filter.
- Flame-arrestor is installed to ensure safety.
- Carry handles for easy installation.
- Absorbent Glass Mat technology for efficient gas recombination.

APPLICATION

- UPS
- Telecom
- Golf-carts



SPECIFICATIONS

Nominal Voltage	12 V
Nominal Capacity	80.0Ah @ 20 hour rate F.V.(1.75V/cell)
Approx. Weight	26.8Kg(59.1lbs.)
Terminals	I2 (M6 Female Thread)
Internal Resistance	≤5.0mΩ (Fully Charged)
Max. Discharge Current	800 A (5 sec.)
Max. Charge Current	24.0 A
Operating Temperature Range	Charge : 0°C~40°C(32°F~104°F) Discharge : -20°C~50°C(-4°F~122°F) Storage. : -20°C~40°C(-4°F~104°F)
Container Material	Standard: ABS(UL 94-HB) BPL80-12 Optional: Flame Retardant ABS(UL 94-V0) BPL80-12FR



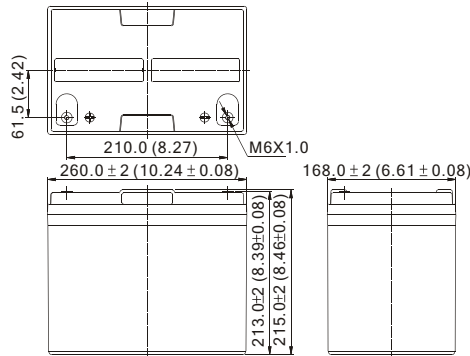
- IEC 60896-21/22
- JIS C 8704-2
- GB/T 19638.2

DIMENSION(mm/inch)

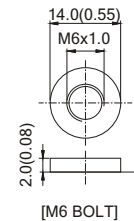
OUTER DIMENSIONS

TERMINAL TYPE

- **Length**
260±2.0 (10.24±0.08)
- **Width**
168±2.0 (6.61±0.08)
- **Container Height**
215±2.0 (8.46±0.08)
- **Total Height**
215±2.0 (8.46±0.08)



- Terminal I2



Terminal Hardware Initial Torque: I2 (5.5Nm±5%)

Constant power discharge characteristics at 25 °C/77 °F

Unit: W

Discharge Time F.V. (V/cell)	15 Min	30 Min	1 Hr	3 Hr	5 Hr	10 Hr	20 Hr
1.80V	1443	1011	551.3	232.1	160.9	89.63	46.85
1.75V	1532	1049	568.5	237.0	163.3	90.99	47.94
1.70V	1603	1072	578.3	239.4	163.9	91.48	48.07
1.65V	1658	1075	579.4	239.6	164.3	91.61	48.20
1.60V	1692	1085	585.4	239.8	164.3	91.61	48.20

Constant current discharge characteristics at 25 °C/77 °F

Unit: A

Discharge Time F.V. (V/cell)	15 Min	30 Min	1 Hr	3 Hr	5 Hr	10 Hr	20 Hr
1.80V	130	89.5	46.3	19.3	13.4	7.50	3.90
1.75V	139	92.8	47.8	19.7	13.6	7.60	4.00
1.70V	146	94.9	48.6	20.0	13.7	7.62	4.01
1.65V	151	95.1	48.7	20.0	13.7	7.63	4.02
1.60V	154	96.1	49.2	20.0	13.7	7.63	4.02

All data and artworks shall be changed without prior notice, BB reserves the right to explain and update the information contained hereinto.