



Chipsmall Limited consists of a professional team with an average of over 10 year of expertise in the distribution of electronic components. Based in Hongkong, we have already established firm and mutual-benefit business relationships with customers from,Europe,America and south Asia,supplying obsolete and hard-to-find components to meet their specific needs.

With the principle of "Quality Parts,Customers Priority,Honest Operation,and Considerate Service",our business mainly focus on the distribution of electronic components. Line cards we deal with include Microchip,ALPS,ROHM,Xilinx,Pulse,ON,Everlight and Freescale. Main products comprise IC,Modules,Potentiometer,IC Socket,Relay,Connector.Our parts cover such applications as commercial,industrial, and automotives areas.

We are looking forward to setting up business relationship with you and hope to provide you with the best service and solution. Let us make a better world for our industry!



## Contact us

Tel: +86-755-8981 8866 Fax: +86-755-8427 6832

Email & Skype: info@chipsmall.com Web: www.chipsmall.com

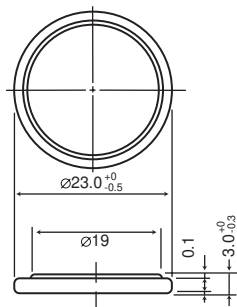
Address: A1208, Overseas Decoration Building, #122 Zhenhua RD., Futian, Shenzhen, China



# High Operating Temperature Poly-carbonmonofluoride Lithium Coin Batteries (BR "A" Series): Individual Specifications

## BR2330A

### ■ Dimensions(mm)

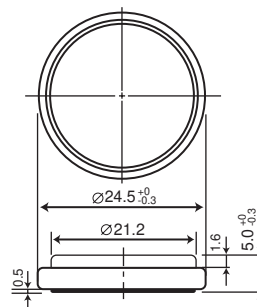


Weight:3.2g

**Note:** This bare cell diagram is for size reference only. Please refer to the tab configurations at the end of this section for available tabs.

## BR2450A

### ■ Dimensions(mm)



Weight:5.0g

**Note:** This bare cell diagram is for size reference only. Please refer to the tab configurations at the end of this section for available tabs.

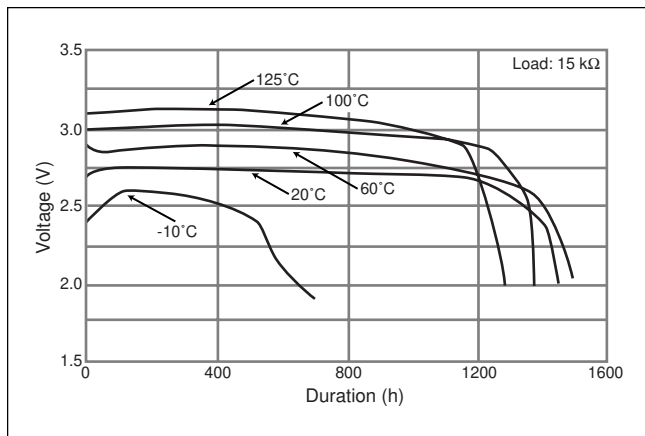
### ■ Specification

Nominal voltage (V)	3
Nominal capacity (mAh)	255
Continuous standard load (mA)	0.03
Operating temperature (C)	-40 ~ +125

### ■ Specification

Nominal voltage (V)	3
Nominal capacity (mAh)	550
Continuous standard load (mA)	0.03
Operating temperature (C)	-40 ~ +125

### ■ Temperature Characteristics



### ■ Temperature Characteristics

