



Chipsmall Limited consists of a professional team with an average of over 10 year of expertise in the distribution of electronic components. Based in Hongkong, we have already established firm and mutual-benefit business relationships with customers from,Europe,America and south Asia,supplying obsolete and hard-to-find components to meet their specific needs.

With the principle of “Quality Parts,Customers Priority,Honest Operation,and Considerate Service”,our business mainly focus on the distribution of electronic components. Line cards we deal with include Microchip,ALPS,ROHM,Xilinx,Pulse,ON,Everlight and Freescale. Main products comprise IC,Modules,Potentiometer,IC Socket,Relay,Connector.Our parts cover such applications as commercial,industrial, and automotives areas.

We are looking forward to setting up business relationship with you and hope to provide you with the best service and solution. Let us make a better world for our industry!



Contact us

Tel: +86-755-8981 8866 Fax: +86-755-8427 6832

Email & Skype: info@chipsmall.com Web: www.chipsmall.com

Address: A1208, Overseas Decoration Building, #122 Zhenhua RD., Futian, Shenzhen, China





Miniature 10 Amps • 2PDT To MIL-PRF-83536

SPECIFICATIONS

GENERAL

Contact Arrangement.....2PDT (2 Form C)
Weight.....1.6 oz approx.
 Designed to meet the requirements of MIL-PRF-83536

PERFORMANCE

Contact Rating (Note 1):

Resistive.....	10 Amps @ 28 VDC or 115/208V 400 Hz (Case Grounded)
Inductive.....	8 Amps @ 28 VDC or 115/208V 400 Hz 2.5 Amps @ 115/208V 60 Hz (Case Grounded)
Motor.....	4 Amps @ 28 VDC or 115/208V 400 Hz 2 Amps @ 115/208V 60 Hz (Case Grounded)
Lamp.....	2 Amps @ 28 VDC or 115/208V 400 Hz 1.5 Amps @ 115/208V 60 Hz (Case Grounded)

Life 100,000 operations minimum @ rated
resistive load, 125°C

Pull In Power.....500 mw approx.

Operate/Release Time:	DC Coil	AC Coil
	15 ms max	50 ms max
Excluding bounce time at nominal coil voltage		

Contact Bounce Time..... 1 ms max
@ rated contact load, 28 VDC

Contact Voltage Drop:

Before Life	100 mv max @ 10 Amps and 6 VDC
After Life	125 mv max @ 10 Amps and 6 VDC

ENVIRONMENTAL

Temperature Range..... -70°C to +125°C
Vibration (Note 2)..... 0.12" DA 10 - 70 Hz
 30 G's 70 - 3,000 Hz

Shock (Operating)(Note 2)200 G's 6 ms

ELECTRICAL CHARACTERISTICS

Duty Cycle Continuous
Insulation Resistance 100 megohms
 @ 500V 25°C

Dielectric Strength:

Sea Level:	
Contact to Case	1,250 VRMS
Contact to Coil	1,250 VRMS
Coil to Case	1,000 VRMS
Across Open Contacts	1,250 VRMS
80,000 Feet:	
All Points.....	350 VRMS

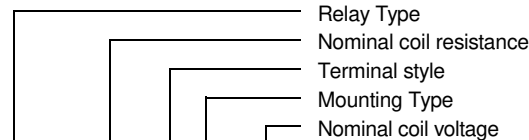
MIL-PRF-83536/9 QUALIFIED to ER level M

Notes:

1. For other ratings consult the factory.
2. For applications requiring higher shock and vibration, consult the factory.
3. AC coil line frequency 50 to 400 Hz.

COIL DATA:

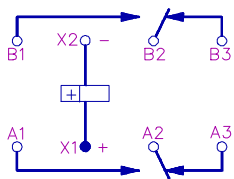
MODEL BR246 PART NUMBER	BR246-20()-6V	BR246-80()-12V	BR246-320()-28V	BR246-1000()-48V	BR246AC-()-115V (Note 3)
NOMINAL COIL VOLTAGE	6 VDC	12 VDC	28 VDC	48 VDC	115 VAC
MAXIMUM COIL VOLTAGE	8 VDC	15 VDC	29 VDC	59 VDC	122 VAC
PULL IN VOLTAGE (MAX @ +125°C)	4.5 VDC	9 VDC	18 VDC	36 VDC	90 VAC
DROP OUT VOLTAGE (MAX)	1.8 VDC	3.5 VDC	5.1 VDC	11 VDC	5 - 30 VAC
COIL RESISTANCE $\pm 10\%$ @ 25°C	20 OHMS	80 OHMS	320 OHMS	1000 OHMS	I = 0.04 AMPS



BR246 - 320 C 2 - 28V

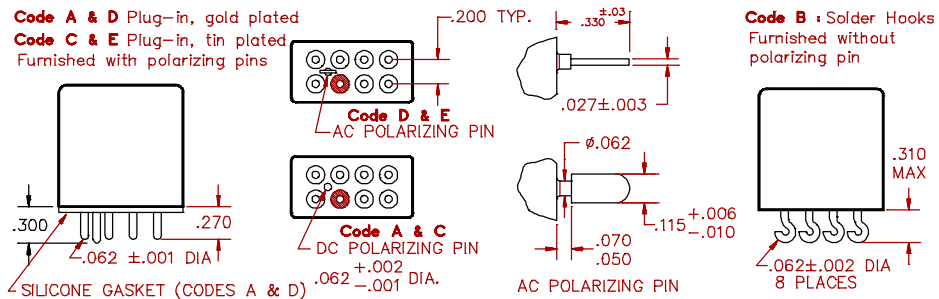
SCHEMATIC TERMINAL VIEW

NUMBERS FOR REFERENCE ONLY



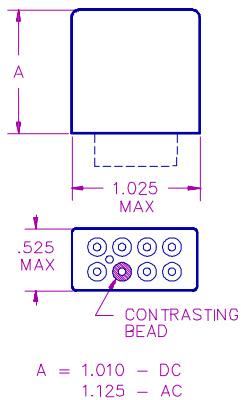
CIRCUIT

TERMINAL STYLES

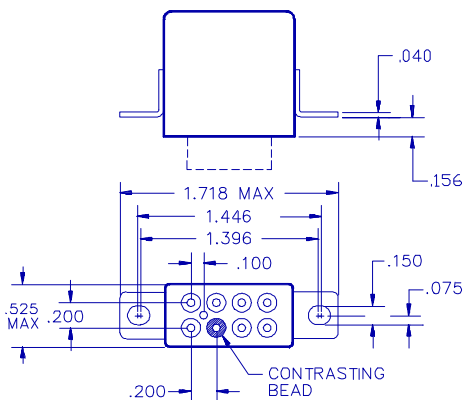


MOUNTING CODES

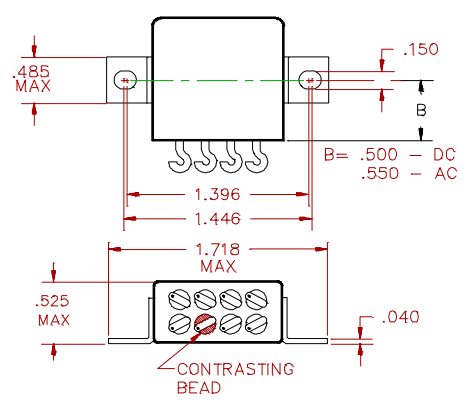
Code 1 : Plain can



Code 2 : Side Flanges



Code 3 : Face Flanges



GENERAL NOTES

- Unless otherwise specified, all tests made at nominal coil voltages, @ 25°C.
- For special coil variations, switching configurations, terminals styles and mounting types, consult the factory.
- Unless otherwise specified, tolerances on decimal dimensions are $\pm .010$ ".
- Specifications contained herein are subject to change without notice.