



Chipsmall Limited consists of a professional team with an average of over 10 year of expertise in the distribution of electronic components. Based in Hongkong, we have already established firm and mutual-benefit business relationships with customers from,Europe,America and south Asia,supplying obsolete and hard-to-find components to meet their specific needs.

With the principle of "Quality Parts,Customers Priority,Honest Operation,and Considerate Service",our business mainly focus on the distribution of electronic components. Line cards we deal with include Microchip,ALPS,ROHM,Xilinx,Pulse,ON,Everlight and Freescale. Main products comprise IC,Modules,Potentiometer,IC Socket,Relay,Connector.Our parts cover such applications as commercial,industrial, and automotives areas.

We are looking forward to setting up business relationship with you and hope to provide you with the best service and solution. Let us make a better world for our industry!



Contact us

Tel: +86-755-8981 8866 Fax: +86-755-8427 6832

Email & Skype: info@chipsmall.com Web: www.chipsmall.com

Address: A1208, Overseas Decoration Building, #122 Zhenhua RD., Futian, Shenzhen, China

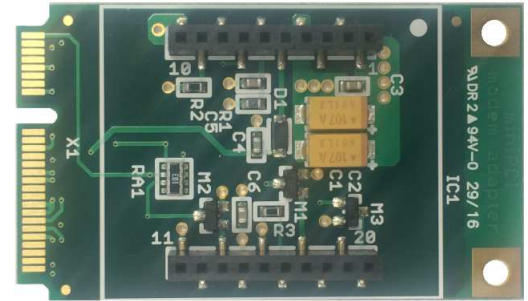




BRD-mPCIe-SW

The BRD-mPCIe-SW full size mini PCI express adapter board adds cellular connectivity to any device with a mini-PCIe slot—embedded PCs, laptops, industrial tablets or custom PC boards--without the cost and delay of obtaining FCC and carrier certification. The adapter board accepts NimbeLink's NL-SW-LTE-S7588 certified Skywire™ cellular modem, which is the smallest in the industry. The standard mini PCIe adapter, with choice of compact Skywire modem, fits easily within most of today's miniaturized devices.

BRD-mPCIe-SW is fully backed by a 3-year warranty, technical support and application assistance from BiPOM Electronics, Inc.

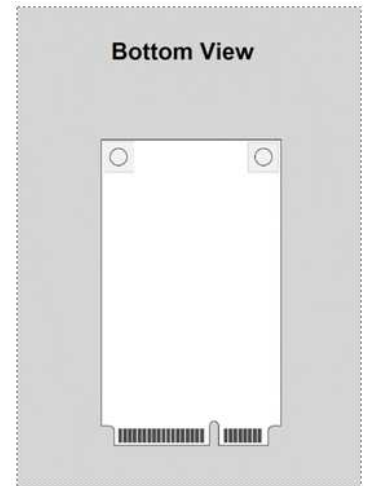
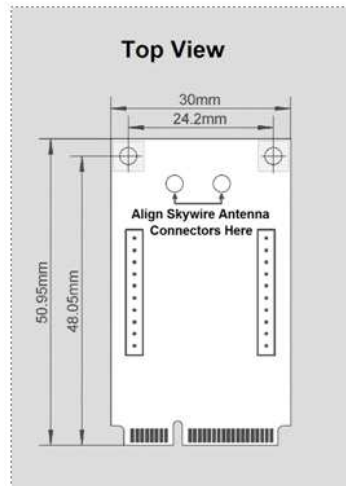


Features:

- Compact size fits directly onto boards with full size mini-PCIe slots
- Plug-and-play operation with Linux, Windows 7,8,10, and Embedded
- Customer can use any antenna without requiring re-certification

Advantages:

- Fast incorporation of Verizon, AT&T, T-Mobile and other cellular access without certification cost
- Eliminates the need for chip-down modem development
- Allows compact device layout
- Requires no software development on Linux and just addition of a USB driver on Windows



BRD-mPCIe-SW Specifications:

- Works with NL-SW-LTE-S7588 (-V and -T)
- Supply voltage: 3.3V from miniPCIe
- Active call current: 720mA - 1.5A
- Normal current: 29mA
- Power saving current: 1mA
- Temperature range: -40°C to +85°C
- Communication Method: USB
- Dimensions: 51 mm x 30 mm x 12 mm

Target Applications:

- Kiosks
- Digital signage
- Security panels
- Surveillance equipment
- Control panels

Ordering Information:

- BRD-mPCIe-SW
- Custom versions available



Skywire Inside

More details and Technical Manual are available for download at www.bipom.com

BiPOM Electronics, Inc. • Phone: 1-713-283-9970 • E-mail: info@bipom.com • Web: www.bipom.com

All trademarked names in this brochure are the property of respective owners.