



Chipsmall Limited consists of a professional team with an average of over 10 year of expertise in the distribution of electronic components. Based in Hongkong, we have already established firm and mutual-benefit business relationships with customers from,Europe,America and south Asia,supplying obsolete and hard-to-find components to meet their specific needs.

With the principle of “Quality Parts,Customers Priority,Honest Operation,and Considerate Service”,our business mainly focus on the distribution of electronic components. Line cards we deal with include Microchip,ALPS,ROHM,Xilinx,Pulse,ON,Everlight and Freescale. Main products comprise IC,Modules,Potentiometer,IC Socket,Relay,Connector.Our parts cover such applications as commercial,industrial, and automotives areas.

We are looking forward to setting up business relationship with you and hope to provide you with the best service and solution. Let us make a better world for our industry!



Contact us

Tel: +86-755-8981 8866 Fax: +86-755-8427 6832

Email & Skype: info@chipsmall.com Web: www.chipsmall.com

Address: A1208, Overseas Decoration Building, #122 Zhenhua RD., Futian, Shenzhen, China





For more information,
visit [freescale.com/
sensortoolbox](http://freescale.com/sensortoolbox)

**BRKT-
STBC-
SA9500**

Freescale and the Freescale logo
are trademarks of
Freescale Semiconductor, Inc.,
Reg. U.S. Pat. & Tm. Off. All other
product or service names are the
property of their respective owners.
© 2015 Freescale Semiconductor, Inc.
BRKTSTBCSA9500QRC REV 1
920-28966 REV A

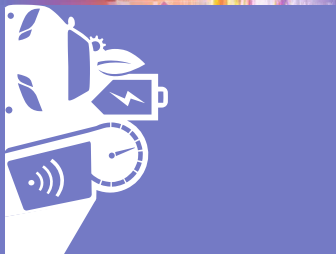
BRKT-STBC-SA9500



BRKT-
STBC-
SA9500

Quick Reference Card

3-Axis Motion-Sensing Platform Breakout Board
FXLC95000CL motion-sensing platform integrates
a 3-axis MEMS accelerometer with a 32-bit MCU



FREESCALE SENSOR TOOLBOX

Quick Reference Card

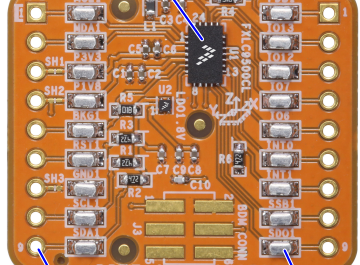
Find additional information in the breakout board section of freescale.com/sensortoolbox

- Schematics
- Layout design
- Documentation

The FRDM-K22F-SA9500 and FRDM-STBC-SA9500 extend this breakout board with broad demo and development capabilities.

- Software development platform
- Graphical tools

FXLC9500CL motion-sensing platform integrating a 3-axis MEMS accelerometer and a 32-bit MCU 24 QFN (3 mm x 5 mm x 1 mm)



MCL1 – 1	1 – PDB1
MDA1 – 2	2 – IO13
P3V3 – 3	3 – IO12
P1V8 – 4	4 – IO7
BKG1 – 5	5 – IO6
RST1 – 6	6 – INT0
GND1 – 7	7 – INT1
SCL1 – 8	8 – SSB1
SDA1 – 9	9 – SDO1

Through hole pins
(18 places)

Test points
(18 places)

Get to Know the BRKT-STBC-SA9500



Learn more at freescale.com/sensortoolbox