



Chipsmall Limited consists of a professional team with an average of over 10 year of expertise in the distribution of electronic components. Based in Hongkong, we have already established firm and mutual-benefit business relationships with customers from,Europe,America and south Asia,supplying obsolete and hard-to-find components to meet their specific needs.

With the principle of “Quality Parts,Customers Priority,Honest Operation,and Considerate Service”,our business mainly focus on the distribution of electronic components. Line cards we deal with include Microchip,ALPS,ROHM,Xilinx,Pulse,ON,Everlight and Freescale. Main products comprise IC,Modules,Potentiometer,IC Socket,Relay,Connector.Our parts cover such applications as commercial,industrial, and automotives areas.

We are looking forward to setting up business relationship with you and hope to provide you with the best service and solution. Let us make a better world for our industry!



## Contact us

Tel: +86-755-8981 8866 Fax: +86-755-8427 6832

Email & Skype: info@chipsmall.com Web: www.chipsmall.com

Address: A1208, Overseas Decoration Building, #122 Zhenhua RD., Futian, Shenzhen, China



# TUBE GLIDES, FEET, BUMPERS & CASTERS





TUBE INSERT & GLIDE SELECTOR GUIDE .....282



SQUARE INSERT GLIDES.....283 - 285



SQUARE THREADED INSERT GLIDES .....286 - 287



SQUARE AND ANGLE IRON CAPS..... 288



ROUND TUBE INSERT GLIDES .....289 - 292



ROUND THREADED INSERT GLIDES .....293 - 294



FERRULE & TUBE CAPS ..... 295



RECTANGLE TUBE INSERT GLIDES .....297 - 298



TACK, SCREW-IN & ADHESIVE GLIDES..... 299



PLASTIC BASED LEVELERS ..... 300 - 302



ADJUSTABLE FEET ..... 303



BASE CAPS & RIVET FEET ..... 304



STEM BUMPERS ..... 305 - 309



BUMPERS & STICK-ON FEET ..... 310 - 312



CASTERS ..... 313 - 317



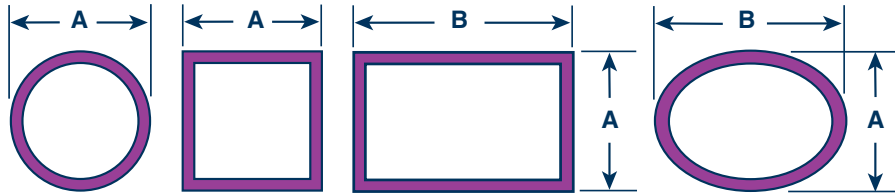
CASTER SELECTOR GUIDE..... 317

# TUBE GLIDES, FEET, BUMPERS & CASTERS

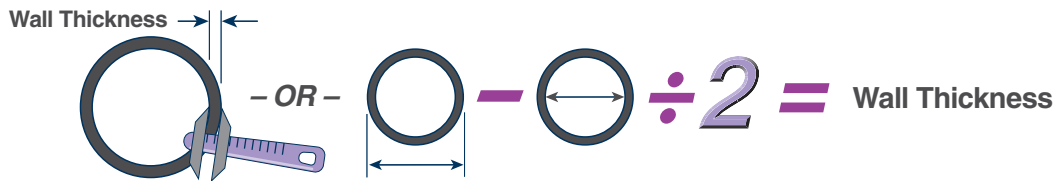


# TUBE INSERT & GLIDE SELECTOR GUIDE

## Step 1: Determine Tube Size = Actual OD of Tubing



## Step 2: Determine the Wall Thickness to Determine Tube Gauge



Wall Thickness (in)	0.239	0.224	0.209	0.194	0.179	0.164	0.149	0.134	0.120	0.109	0.095	0.083	0.072	0.065	0.058	0.049	0.042	0.035	0.028
(mm)	6.1	5.7	5.3	4.9	4.5	4.2	3.8	3.4	3	2.8	2.4	2.1	1.8	1.7	1.5	1.2	1.1	0.9	0.7
Tube Gauge	3	4	5	6	7	8	9	10	11	12	13	14	15	16	17	18	19	20	22

## Step 3: Select your desired...

### Style:



**Ribbed Design – Fits Multiple Gauges Non-Load Bearing**



**Straight Wall Design – Fits Single Gauge Load Bearing**

### Shape & Finish:



**Flat, Rounded, Angled, or Articulating**



**Polished, Textured (Matte), or Chromed**



# SQUARE INSERT GLIDES

## SQR Series Square Multi-Gauge Ribbed Tube Inserts



**Specifications:**

- Material: Low-Density Polyethylene
- Surface Finish: See Table
- Color: See Table

**Features:**

- Ideal for aesthetic or light-duty load bearing applications
- Perimeter rib design allows for easy assembly and a secure fit
- Used on a wide range of furniture and metal tubing applications

**Imperial**

Black Item No.		White Item No.		Tube OD		Wall Thickness		Bulk Pack Qty.
Polished	Textured	Polished	Textured	in	Tube Gauge	in		
SQR051620A	—	—	—	0.500	16-20	0.035-0.065	10000	
SQR111193A	SQR111211A	SQR111229A	—	0.500	14-20	0.035-0.083	2500	
SQR061620C	—	—	—	0.625	16-20	0.035-0.065	5000	
SQR111195A	SQR111213A	—	—	0.625	12-20	0.035-0.109	2500	
SQR111196A	SQR111214A	SQR111232A	—	0.750	12-20	0.035-0.109	2500	
SQR071620C	—	—	—	0.750	16-20	0.035-0.065	5000	
SQR081618A	—	—	—	0.875	16-18	0.049-0.065	4000	
SQR101014A	—	SQR101014D	—	1.000	10-14	0.083-0.134	2000	
SQR101420D	—	—	—	1.000	14-20	0.035-0.083	2500	
SQR111200A	SQR111218A	SQR111235A	—	1.000	11-19	0.042-0.120	2500	
SQR111620A	—	—	—	1.125	16-20	0.035-0.065	2000	
—	—	SQR199150A	—	1.125	14-20	0.035-0.083	2000	
SQR121014A	—	—	—	1.250	10-14	0.083-0.134	2000	
SQR121420A	—	—	—	1.250	14-20	0.035-0.083	2000	
—	—	—	SQR111616A	1.250	11-19	0.042-0.120	1500	
SQR131016A	—	—	—	1.375	10-16	0.065-0.134	900	
SQR111202A	SQR111220A	SQR111238A	—	1.375	11-19	0.042-0.120	1500	
SQR151014A	—	—	—	1.500	10-12	0.083-0.109	1000	
SQR111503A	SQR111541A	SQR111617A	—	1.500	12-19	0.042-0.120	1000	
SQR151418A	—	—	—	1.500	14-18	0.049-0.083	1000	
SQR171014A	SQR171014B	SQR171014C	—	1.750	10-14	0.083-0.134	500	
SQR171418A	—	SQR171418C	—	1.750	14-18	0.049-0.083	500	
—	SQR200508A	—	—	2.000	5-8	0.164-0.209	500	
SQR201014A	—	—	—	2.000	10-14	0.083-0.134	350	
SQR201418A	—	—	—	2.000	14-18	0.049-0.083	500	
SQR111206A	SQR111224A	SQR111242A	—	2.000	11-19	0.042-0.120	500	
—	SQR251014A	—	—	2.500	10-14	0.083-0.134	250	
SQR111504A	SQR111542A	—	—	2.500	11-19	0.042-0.120	250	
—	SQR300508A	—	—	3.000	5-8	0.164-0.209	200	
—	SQR301014A	—	—	3.000	10-14	0.083-0.134	200	
SQR111507A	SQR111545A	—	SQR111621A	3.000	8-14	0.083-0.164	200	
SQR3511B	—	—	—	3.500	8-11	0.120-0.164	70	
—	SQR400408A	—	—	4.000	4-8	0.164-0.224	75	
—	SQR400711B	—	—	4.000	7-11	0.120-0.179	70	
—	SQR500711A	—	—	5.000	7-11	0.120-0.179	48	
—	SQR60188A	—	—	6.000	10-14	0.083-0.134	26	

**Metric**

Black Item No.		Tube OD		Wall Thickness	Bulk Pack Qty.
Polished	Textured	in	Tube Gauge		
SQR111197A	SQR111215A	20.00	12-20	0.035-0.109	2500
SQR111198A	SQR111216A	22.00	12-20	0.035-0.109	2500
SQR111199A	SQR111217A	25.00	12-20	0.035-0.109	2500
SQR111502A	SQR111540A	32.00	11-19	0.042-0.120	1500
SQR111203A	SQR111221A	40.00	11-19	0.042-0.120	500
SQR111204A	SQR111222A	45.00	11-19	0.042-0.120	500

Black Item No.		Tube OD		Wall Thickness	Bulk Pack Qty.
Polished	Textured	in	Tube Gauge		
SQR111205A	SQR111223A	50.00	11-19	0.042-0.120	500
SQR111207A	SQR111225A	60.00	11-19	0.042-0.120	250
SQR111810A	SQR111811A	60.00	9-14	0.083-0.149	250
SQR111506A	SQR111544A	75.00	8-14	0.083-0.164	200
SQR111209A	SQR111227A	80.00	8-14	0.083-0.164	150
SQR111210A	SQR111228A	100.00	8-14	0.083-0.164	100

## LSQR Series Square Ribbed Tube Inserts



**Specifications:**

- Material: High-Density Polyethylene
- Color: Black with Textured Finish

**Features:**

- Not recommended for load-bearing applications

Item No.	Tube Size		Tube Gauge	Wall Thickness		Bulk Pack Qty.
	in	mm		in		
LSQR061620A	0.625	15.87	16-20	0.035-0.065	6000	
LSQR071620A	0.750	19.05	16-20	0.035-0.065	4000	
LSQR101420A	1.000	25.40	14-20	0.035-0.083	2000	
LSQR111620A	1.125	28.32	16-20	0.035-0.065	3000	
LSQR121420A	1.250	31.75	14-20	0.035-0.083	1300	



# SQUARE INSERT GLIDES

## SIG Series Square Load Bearing Glides



**Specifications:**

- Material: See Table
- Color: See Table

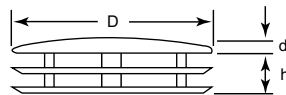
**Features:**

- Suitable for light and heavy-duty applications
- Step lead provides easy installation
- Press fit assures a secure hold in tubing

Item No.	Tube Size in	Tube Gauge	Material	Wall Thickness in	Color	Bulk Pack Qty.
SIG1100A	0.375	16	ABS	0.065	Black	5000
SIG1105A	0.375	19	ABS	0.042	Black	5000
SIG1108A	0.500	14	ABS	0.083	Black	4000
SIG1110A	0.500	16	ABS	0.065	Black	15000
SIG1115A	0.500	18	ABS	0.049	Black	15000
SIG1120A	0.625	16	ABS	0.065	Black	8000
SIG1125A	0.625	17	ABS	0.058	Black	8000
SIG1130A	0.625	18	ABS	0.049	Black	8000
SIG1135A	0.625	20	ABS	0.035	Black	8000
SIG1140A	0.695	18	ABS	0.049	Black	5000
SIG1145A	0.715	18	ABS	0.049	Black	5000
SIG1150A	0.725	11	ABS	0.120	Black	5000
SIG1155A	0.725	16	ABS	0.065	Black	5000
SIG1160A	0.750	11	ABS	0.120	Black	5800
SIG1165A	0.750	13	ABS	0.095	Black	6000
SIG1170A	0.750	15	ABS	0.072	Black	4000
SIG1175A	0.750	16	ABS	0.065	Black	5500
SIG1180A	0.750	18	ABS	0.049	Black	5500
SIG1185A	0.750	19	ABS	0.042	Black	5500
SIG1190A	0.750	20	ABS	0.035	Black	5500
SIG1200A	0.812	14	ABS	0.083	Black	4500
SIG1205A	0.812	16	ABS	0.065	Black	4500
SIG1210A	0.812	18	ABS	0.049	Black	4500
SIG1215A	0.875	11	ABS	0.120	Black	5000
SIG1220C	0.875	16	ABS	0.065	Black	4000
SIG1225A	0.875	18	ABS	0.049	Black	4000
SIG1235A	1.000	11	ABS	0.120	Black	3200
SIG1240A	1.000	14	ABS	0.083	Black	3000
SIG1244C	1.000	16	Butyrate	0.065	Clear	2800
SIG1245A	1.000	16	ABS	0.065	Black	2800

Item No.	Tube Size in	Tube Gauge	Material	Wall Thickness in	Color	Bulk Pack Qty.
SIG1250A	1.000	17	ABS	0.058	Black	2800
SIG1255A	1.000	18	ABS	0.049	Black	2800
SIG1260A	1.000	20	ABS	0.035	Black	3200
SIG1265A	1.000	22	ABS	0.035	Black	3200
SIG1270A	1.125	16	ABS	0.065	Black	2200
SIG1275A	1.125	18	ABS	0.049	Black	2200
SIG1280A	1.250	11	ABS	0.120	Black	2200
SIG1285A	1.250	12	ABS	0.109	Black	2000
SIG1290A	1.250	14	ABS	0.083	Black	1500
SIG1295A	1.250	16	ABS	0.065	Black	1700
SIG1300A	1.250	18	ABS	0.049	Black	1800
SIG1302B	1.255	19	Butyrate	0.042	Clear	1500
SIG1305A	1.500	10	ABS	0.134	Black	1800
SIG1310A	1.500	11	ABS	0.120	Black	1200
SIG1315A	1.500	12	ABS	0.109	Black	1200
SIG1320C	1.500	14	ABS	0.083	Black	1300
SIG1325A	1.500	16	ABS	0.065	Black	1100
SIG1330A	1.500	18	ABS	0.049	Black	1200
SIG1335A	1.500	20	ABS	0.035	Black	1200
SIG1340A	1.750	11	ABS	0.120	Black	1000
SIG1345A	1.750	14	ABS	0.083	Black	1000
SIG1350A	1.750	16	ABS	0.065	Black	900
SIG1353C	2.000	11	ABS	0.120	Black	1000
SIG1365A	2.000	12	ABS	0.109	Black	1000
SIG1370A	2.000	14	ABS	0.083	Black	1000
SIG1375A	2.000	16	ABS	0.065	Black	1000
SIG1380A	2.000	18	ABS	0.049	Black	1000
SIG1385A	2.500	11	ABS	0.120	Black	500
SIG1390A	3.000	11	ABS	0.120	Black	500

## SQP Series Square Ribbed Tube Inserts Chrome Finish



**Specifications:**

- Material: Low-Density Polyethylene
- Color: Black with High-Polished Metal-Finish Shell

**Features:**

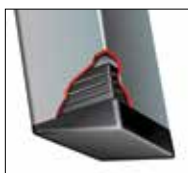
- Polished metallic finish provides enhanced aesthetic appearance
- Horizontal ribbing allows for built-in flexibility to fit multiple tube gauges

Item No.	D		d		h		Wall Thickness		Bulk Pack Qty.
	in	mm	in	mm	in	mm	Tube Gauge (in)	mm	
SQP465341A	0.625	15.88	0.079	2.00	0.354	9.00	14-19 (.040-.080)	1.0 - 2.0	1000
SQP460959A	0.709	18.00	0.079	2.00	0.354	9.00	14-19 (.040-.080)	1.0 - 2.0	1000
SQP465340A	0.750	19.05	0.079	2.00	0.394	10.00	14-19 (.040-.080)	1.0 - 2.0	1000
SQP465343A	1.000	25.40	0.079	2.00	0.394	10.00	14-19 (.040-.080)	1.0 - 2.0	1000
SQP465342A	1.181	30.00	0.118	3.00	0.394	10.00	14-19 (.040-.080)	1.0 - 2.0	1000
SQP460964A	1.375	35.00	0.118	3.00	0.472	12.00	14-19 (.040-.080)	1.0 - 2.0	1000
SQP465344A	1.575	40.00	0.118	3.00	0.472	12.00	14-19 (.040-.080)	1.0 - 2.0	1000



## SQUARE INSERT GLIDES

### AFSQ Series Square Angled Tube Inserts



**Specifications:**

- Material: Low-Density Polyethylene
- Color: Black

**Features:**

- These angled feet are ideal for stacking chairs, children's play equipment and step ladders

Item No.	Tube Size		Tube Gauge	Wall Thickness		Bulk Pack Qty.
	in	mm		in	Degree	
AFSQ07161805A*	0.750	19.05	16-18	0.049-0.065	5°	2500
AFSQ07161825A*	0.750	19.05	16-18	0.049-0.065	25°	2500
AFSQ10162015A	1.000	25.40	16-20	0.035-0.065	15°	1000

\* Has a built-in bumper

### SRG Series Square Domed Tube Glides



**Specifications:**

- Material: ABS
- Color: Black

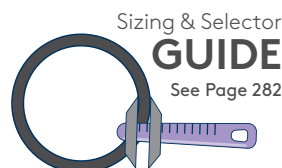
**Features:**

- Ideal for applications with variable leg angles
- Square rocker glides fit flush with tubing outer dimensions for a clean, finished look

Item No.	Tube Size		Wall Thickness	Bulk Pack Qty.
	in	Tube Gauge	in	
SRG1010A	0.750	16	0.065	4000
SRG1020A	0.750	18	0.049	4000
SRG1030A	0.813	16	0.065	3000
SRG1115A	0.813	17	0.058	4000
SRG1120A	0.813	18	0.049	700
SRG1045A	0.875	16	0.065	3000
SRG1055A	0.875	18	0.049	2700

Item No.	Tube Size		Wall Thickness	Bulk Pack Qty.
	in	Tube Gauge	in	
SRG1075A	0.940	18	0.049	2700
SRG1080A	1.000	16	0.065	2000
SRG1100A	1.000	18	0.049	2000
SRG1125A	1.250	16	0.065	1100
SRG1135A	1.250	18	0.049	1100
SRG1145A	1.500	18	0.049	1000

### DFSQ Series Square Domed Tube Inserts



Sizing & Selector  
**GUIDE**  
See Page 282

**Specifications:**

- Material: Low-Density Polyethylene
- Color: Black

**Features:**

- Can accommodate any degree of leg angle, while the horizontal ribbed design has built-in flexibility to fit multiple tube gauge sizes

Item No.	Tube Size		Tube Gauge	Bulk Pack Qty.
	in	mm		
DFSQ111525A	0.787	20.00	18-25	2500
DFSQ081620A	0.875	22.22	16-20	1750
DFSQ101620A	1.000	25.40	16-20	1250



LOCAL STOCK



SAME DAY SHIPPING



SHOP OVER 35,000 PRODUCTS ONLINE

**THREADED INSERT GLIDES****STI Series****Square Plastic Threaded Inserts**

## Specifications:

- Material: Nylon
- Color: See Table

## Features:

- Can be used with either adjustable feet or tilt glides

Item No.	Color	Ø Tube in	Tube Gauge	Thread Size	Bulk Pack Qty.
STI1200B	Black	0.750	16	1/4 - 20	5000
STI1215A	Natural	0.875	16	1/4 - 20	1900
STI1215B	Black	0.875	16	1/4 - 20	1900
STI1220A	Natural	1.000	16	1/4 - 20	3000
STI1240A	Natural	1.000	18	1/4 - 20	2700
STI1260A	Natural	1.000	18	5/16 - 18	2700
STI1260B	Black	1.000	18	5/16 - 18	2700
STI1270A	Natural	1.250	16	5/16 - 18	1800

**TAS Series****Square Threaded All Metal Inserts**

## Specifications:

- Material: Steel with Zinc Plated Finish

## Features:

- Metal ribs lock onto inside of square tube

**Imperial**

Item No.	Fits Tube		Fits Tube Gauge	Bulk Pack Qty.
	in	Thread		
TAS240A	1	5/16 - 18	16 - 18	1000
TAS260A	1 - 1/4	5/16 - 18	16 - 18	500
TAS460A	1 - 1/4	3/8 - 16	16 - 18	500
TAS270A	1 - 1/2	5/16 - 18	16 - 18	500
TAS470A	1 - 1/2	3/8 - 16	16 - 18	500

**Metric**

Item No.	Fits Tube		Thread Size	Tube Gauge	Std Pack Qty.
	mm	mm			
499465	19	M6	1.0	200	
499466	22	M6	1.0	200	
499467	25	M6	1.0	200	
551845	25	M8	1.2	200	
499470	32	M8	1.2	200	
499471	38	M8	1.2	200	
551842	22	M10	1.5	200	
551843	25	M10	1.5	200	
499473	32	M10	1.5	200	
499474	38	M10	1.5	200	

**SQM Series****Square Metal Threaded Inserts**

## Specifications:

- Material: High-Density Polyethylene with Zinc-Plated Steel-Threaded Insert
- Color: Black

## Features:

- Tube inserts with internal threads to accommodate adjustable leveling mounts and feet
- Ribbed to accommodate multiple gauges

**Imperial**

Item No.	Tube Size	Thread Size	Tube Gauge	Wall Thickness	Bulk Pack Qty.
				in	
SQM0150A	0.750	1/4 - 20	16 - 18	0.049 - 0.065	1000
SQM0200A	0.875	1/4 - 20	16 - 18	0.049 - 0.065	1000
SQM0300A	1.000	1/4 - 20	16 - 18	0.049 - 0.065	1000
SQM0350A	1.000	5/16 - 18	16 - 18	0.049 - 0.065	1000
SQM0400A	1.000	1/4 - 20	12 - 14	0.083 - 0.109	1000
SQM0450A	1.000	5/16 - 18	12 - 14	0.083 - 0.109	1000
SQM0500A	1.000	1/4 - 20	10 - 11	0.120 - 0.134	1000
SQM0550A	1.000	5/16 - 18	10 - 11	0.120 - 0.134	1000
SQM0600A	1.250	5/16 - 18	16 - 18	0.049 - 0.065	500
SQM0650A	1.250	3/8 - 16	16 - 18	0.049 - 0.065	500
SQM0700A	1.250	5/16 - 18	12 - 14	0.083 - 0.109	500
SQM0750A	1.250	3/8 - 16	12 - 14	0.083 - 0.109	500
SQM0800A	1.250	5/16 - 18	10 - 11	0.120 - 0.134	500
SQM0850A	1.250	3/8 - 16	10 - 11	0.120 - 0.134	500
SQM0900A	1.375	3/8 - 16	16 - 18	0.049 - 0.065	500
SQM1000A	1.500	3/8 - 16	16 - 18	0.049 - 0.065	500

**Metric**

Item No.	Tube Size	Thread Size	Tube Gauge	Wall Thickness	Bulk Pack Qty.
	mm	mm	mm	mm	
498583	19	M6	17 - 19	1.1 - 1.5	1000
498584	20	M6	17 - 19	1.1 - 1.5	1000
498585	20	M8	17 - 19	1.1 - 1.5	1000
498586	25	M6	17 - 19	1.1 - 1.5	500
498587	25	M8	17 - 19	1.1 - 1.5	500
498588	30	M8	17 - 19	1.1 - 1.5	1000
498589	30	M10	17 - 19	1.1 - 1.5	250
498590	35	M8	17 - 19	1.1 - 1.5	500
498591	35	M10	17 - 19	1.1 - 1.5	500
498592	40	M8	17 - 19	1.1 - 1.5	200
498593	40	M10	17 - 19	1.1 - 1.5	500
498594	40	M12	17 - 19	1.1 - 1.5	500
498595	50	M8	17 - 19	1.1 - 1.5	100
498596	50	M10	17 - 19	1.1 - 1.5	250
498597	50	M12	17 - 19	1.1 - 1.5	250



# HEAVY DUTY THREADED INSERT GLIDES



## SQH Series Square Heavy Duty Threaded Inserts



**Specifications:**

- Material: Glass-Filled Nylon with Brass Threaded Insert
- Color: Black

**Features:**

- Threaded brass insert for indoor and outdoor use
- High load rating is ideal for machinery use

**Imperial**

Item No.	Tube Size in	Thread Size	Tube Gauge	Wall Thickness in	Max Static Load lbs	Bulk Pack Qty.
SQH0100A	1.5	3/8-16	16	0.065	1350	48
SQH0150A	1.5	1/2-13	16	0.065	1350	48
SQH0200A	1.5	5/8-11	16	0.065	1350	48
SQH0250A	1.5	3/4-10	16	0.065	1800	48
SQH0300A	1.5	3/8-16	11	0.12	1350	48
SQH0350A	1.5	1/2-13	11	0.12	1350	48
SQH0400A	1.5	5/8-11	11	0.12	1350	48
SQH0450A	1.5	3/4-10	11	0.12	1800	48
SQH0500A	2	3/8-16	16	0.065	1350	24
SQH0550A	2	1/2-13	16	0.065	1350	24
SQH0600A	2	5/8-11	16	0.065	1350	24
SQH0650A	2	3/4-10	16	0.065	2000	24
SQH0700A	2	3/8-16	12	0.109	1350	24
SQH0750A	2	1/2-13	12	0.109	1350	24
SQH0800A	2	5/8-11	12	0.109	1350	24
SQH0850A	2	3/4-10	12	0.109	2000	24

**Metric**

Item No.	Tube Size mm	Thread Size mm	Tube Gauge mm	Max Static Load N	Bulk Pack Qty.
1286358	30	M10	1.5	4500	48
1286359	30	M12	1.5	4500	48
1286360	30	M16	1.5	4500	48
1286361	40	M10	1.5	6000	48
1286362	40	M12	1.5	6000	48
1286363	40	M16	1.5	6000	48
1286364	40	M20	1.5	8000	48
1286365	40	M10	2	6000	48
1286366	40	M12	2	6000	48
1286367	40	M16	2	6000	48
1286368	40	M20	2	8000	48
1286369	50	M12	1.5	6000	24
1286370	50	M16	1.5	6000	24
1286371	50	M20	1.5	8500	24
1286372	50	M12	2	6000	24
1286373	50	M16	2	6000	24
1286374	50	M20	2	8500	24

## TRY BEFORE YOU BUY!

Thousands of options for feet, casters and glides available from Essentra.

Order your **FREE** samples today.

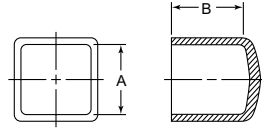
Complete your project with levels, bumpers, casters and vibration mounts from Essentra.

Shop our complete line at [www.essentracomponents.com](http://www.essentracomponents.com)



## SQUARE AND ANGLE IRON CAPS

### DMSQ Series Square Vinyl End Caps



**Specifications:**

- Material: PVC
- Color: See Table

**Features:**

- Designed to fit the most popular sizes of square tubular steel
- Material flexibility will stretch to fit normal tube diameter tolerance variations
- Glossy and attractive finish makes this part ideal for use as a decorative end cap



Black Item No. 1/2" Length (B)	Bulk Pack Qty.	Black Item No. 1" Length (B)	Bulk Pack Qty.	White Item No. 1" Length (B)	Bulk Pack Qty.	A	
						in	mm
DMSQ0250-1/2A	5000	DMSQ0250-1A	6500	—	—	0.250	6.35
DMSQ0312-1/2A	5000	DMSQ0312-1A	5000	—	—	0.312	7.92
DMSQ0375-1/2A	5000	DMSQ0375-1A	5000	—	—	0.375	9.52
DMSQ0437-1/2A	5000	DMSQ0437-1A	5000	—	—	0.437	11.09
DMSQ0500-1/2A	5000	DMSQ0500-1A	4000	—	—	0.500	12.70
DMSQ0625-1/2A	3500	DMSQ0625-1A	2000	—	—	0.625	15.87
DMSQ0750-1/2A	3500	DMSQ0750-1A	2000	DMSQ0750-1C	2000	0.750	19.05
DMSQ1000-1/2A	2000	DMSQ1000-1A	1500	DMSQ1000-1C	1500	1.000	25.40
DMSQ1250-1/2A	2000	DMSQ1250-1A	1000	—	—	1.250	31.75
DMSQ1500-1/2A	1500	DMSQ1500-1A	500	—	—	1.500	38.10
DMSQ2000-1/2A	500	DMSQ2000-1A	325	—	—	2.000	50.80

### SQC Series Square Heavy Duty End Caps



**Specifications:**

- Material: See Table
- Color: Black

**Features:**

- End cap style design fits most popular sizes of square tubular steel



Item No.	Tube Size		Material	Bulk Pack Qty.
	in	mm		
SQC0500A	0.500	12.70	LDPE	5000
SQC1000A	1.000	25.40	ABS	1700
SQC1250A	1.250	31.75	LDPE	1200
SQC3000A	3.000	76.20	LDPE	100

### AIC Series Angle Iron Caps

**Specifications:**

- Material: Low-Density Polyethylene
- Color: Black

**Features:**

- Angle iron caps are an affordable answer to the problem of protecting floors from the sharp edges of angle iron furniture
- Angle iron caps are also used as caps on metal bed frames and shelves and will not rust while also eliminating the cost of welding steel closures



Item No.	Leg Length		Leg Gauge		Bulk Pack Qty.
	in	mm	in	mm	
AIC1000A	1.000	25.40	0.125	3.18	2200
AIC1125A	1.250	31.74	0.125	3.18	1400
AIC1128A	1.500	38.10	0.125	3.18	1000
AIC2000A	1.290	32.78	0.125	3.18	600

# ROUND TUBE INSERT GLIDES



## RDR Series Round Multi-Gauge Ribbed Tube Inserts

**Specifications:**

- Material: Low-Density Polyethylene
- Surface Finish: See Table
- Color: See Table

**Features:**

- Ideal for aesthetic or light-duty load bearing applications
- Perimeter rib design allows for easy assembly and a secure fit
- Used on a wide range of furniture and metal tubing applications



See page 282 for Sizing and Selector Guide.

### Imperial

Black Item No.		White Item No.		Tube OD		Bulk Pack Qty.
Polished	Textured	Polished	Textured	in	Tube Gauge	
RDR111033A	RDR111053A	RDR111073A	—	0.500	16 - 20	2500
RDR111036A	RDR111056A	RDR111076A	—	0.750	14 - 20	1500
—	RDR081012A	—	RDR081012D	0.875	10 - 12	5000
RDR081420D	—	RDR111078A	—	0.875	14 - 20	5000
—	RDR101111A	—	—	1.000	10 - 12	2000
RDR101420D	RDR101420F	—	—	1.000	14 - 20	4000
RDR111040A	RDR111060A	RDR111080A	—	1.000	11 - 19	1000
RDR111042A	RDR111062A	RDR111082A	—	1.125	11 - 19	1000
RDR121014B	—	—	—	1.250	10 - 14	2500
RDR111044A	RDR111064A	RDR111084A	—	1.250	11 - 19	1000
RDR131418A	—	—	—	1.375	14 - 18	1200
RDR111492A	RDR111530A	—	—	1.375	11 - 19	1500
RDR150812A	—	—	—	1.500	8 - 12	1500
—	RDR151012A	—	—	1.500	10 - 12	1500
RDR111046A	RDR111066A	—	—	1.500	11 - 19	1000
RDR111495A	RDR111533A	RDR111571A	RDR111609A	1.625	11 - 19	1000
—	RDR171012A	—	—	1.750	10 - 12	1000
RDR111497A	RDR111535A	—	RDR111611A	1.750	11 - 19	1000
RDR111498A	RDR111536A	—	RDR111612A	1.875	11 - 19	800
RDR201014A	—	—	—	2.000	10 - 14	500
—	RDR201420A	—	—	2.000	14 - 18	500
RDR111049A	RDR111069A	RDR111089A	—	2.000	11 - 19	500
RDR230508B	RDR230508A	—	—	2.375	5 - 8	400
—	RDR231014A	—	—	2.375	10 - 14	400
—	RDR250812A	—	—	2.500	8 - 12	400
RDR111500A	RDR111538A	—	RDR111614A	2.500	11 - 19	250
RDR460674A	RDR465601A	—	—	2.750	8 - 14	500
—	RDR280407A	—	—	2.875	4 - 7	300
—	RDR300812A	—	—	3.000	8 - 12	250
—	RDR301418A	—	—	3.000	14 - 18	250
RDR111052A	RDR111072A	RDR111092A	—	3.000	8 - 14	250
RDR400511A	—	—	—	4.000	5 - 11	150
RDR450711A	—	—	—	4.500	7 - 11	100

### Metric

Black Item No.		White Item No.	Tube OD	Tube Gauge	Bulk Pack Qty.
Polished	Textured	Textured	mm		
—	RDR111527A	—	10.00	11 - 19	2500
RDR111490A	RDR111528A	RDR111603A	12.00	14 - 20	2500
RDR111034A	—	—	13.00	14 - 20	2500
—	RDR460660A	—	15.00	14 - 20	2500
RDR111035A	RDR111055A	—	16.00	14 - 20	5000
RDR111037A	RDR111057A	—	20.00	14 - 20	1500
RDR111038A	RDR111058A	—	22.00	14 - 20	1500
RDR111043A	RDR111063A	—	30.00	11 - 19	1000

Black Item No.		White Item No.	Tube OD	Tube Gauge	Bulk Pack Qty.
Polished	Textured	Textured	mm		
RDR111044A	RDR111064A	RDR111084A	32.00	11 - 19	1000
RDR111794A	RDR111795A	—	32.00	11 - 14	1000
—	RDR111067A	—	40.00	11 - 19	1000
RDR111494A	RDR111532A	—	42.00	11 - 19	1000
RDR111496A	—	RDR111610A	45.00	11 - 19	1000
—	RDR465600A	—	55.00	11 - 19	600
RDR111050A	RDR111070A	—	60.00	11 - 19	400
—	RDR465596A	—	105.00	7 - 14	75

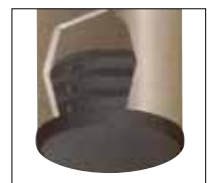
## LRDR Series Round Ribbed Tube Inserts

**Specifications:**

- Material: High-Density Polyethylene
- Color: Black with Matte Finish

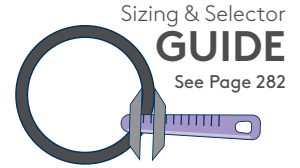
**Features:**

- Designed for light load-bearing applications or cosmetic finishing



Item No.	Tube OD		Tube Gauge	Wall Thickness		Bulk Pack Qty.
	in	mm		in	mm	
LRDR071620A	0.750	19.05	16 - 20	0.035 - 0.065	5500	
LRDR081420A	0.875	22.22	14 - 20	0.035 - 0.083	3500	
LRDR101420A	1.000	25.40	14 - 20	0.035 - 0.083	2800	

Item No.	Tube OD		Tube Gauge	Wall Thickness		Bulk Pack Qty.
	in	mm		in	mm	
LRDR111418A	1.125	28.57	14 - 18	0.035 - 0.083	2200	
LRDR121620A	1.250	31.75	16 - 20	0.035 - 0.065	1500	

**ROUND TUBE INSERT GLIDES****RDG Series****Round Load Bearing Glides****Specifications:**

- Material: See Table
- Color: Black

**Features:**

- Glides are designed for use as a glide or plug style closure
- A reduced diameter step-lead is provided for easy positioning and insertion
- Ideal for moderate to heavy-duty applications



Item No.	Tube OD		Tube Gauge	Wall Thickness		Material	Bulk Pack Qty.
	in			in			
RDG1100A	0.375		19	0.042	ABS	9000	
RDG1105A	0.500		16	0.065	ABS	10000	
RDG1110A	0.500		18	0.049	ABS	15000	
RDG1115A	0.500		20	0.035	ABS	15000	
RDG1120A	0.500		21	0.032	ABS	15000	
RDG1125A	0.500		22	0.028	ABS	13000	
RDG1127A	0.563		19	0.042	HDPE	10000	
RDG1130A	0.563		20	0.035	ABS	13000	
RDG1135A	0.563		22	0.028	ABS	6500	
RDG1140A	0.625		11	0.120	ABS	13000	
RDG1145A	0.625		12	0.109	ABS	13000	
RDG1150A	0.625		13	0.095	ABS	15000	
RDG1155D	0.625		14	0.083	ABS	3000	
RDG1160A	0.625		15	0.072	ABS	7000	
RDG1165A	0.625		16	0.065	ABS	7000	
RDG1168B	0.625		17	0.058	Butyrate	10000	
RDG1170A	0.625		17	0.058	ABS	8000	
RDG1175A	0.625		18	0.049	ABS	8000	
RDG1180A	0.625		20	0.035	ABS	5000	
RDG1185A	0.625		22	0.028	ABS	8000	
RDG1190A	0.750		13	0.095	ABS	6500	
RDG1195C	0.750		14	0.083	ABS	1500	
RDG1200A	0.750		16	0.065	ABS	7000	
RDG1205A	0.750		17	0.058	ABS	8000	
RDG1210A	0.750		18	0.049	ABS	7000	
RDG1215A	0.750		19	0.042	ABS	6500	
RDG1220A	0.750		20	0.035	ABS	6500	
RDG1225A	0.750		22	0.028	ABS	3000	
RDG1228B	0.875		13	0.095	LDPE	4500	
RDG1230A	0.875		14	0.083	ABS	5000	
RDG1235A	0.875		16	0.065	ABS	5000	
RDG1237B	0.875		17	0.058	Nylon	5000	
RDG1240A	0.875		18	0.049	ABS	4500	
RDG1245A	0.875		19	0.042	ABS	5000	
RDG1250A	0.875		20	0.035	ABS	45000	
RDG1255A	1.000		12	0.109	ABS	4000	
RDG1264B	1.000		14	0.083	Butyrate	4000	
RDG1265A	1.000		14	0.083	ABS	4000	
RDG1270A	1.000		15	0.072	ABS	4000	
RDG1273B	1.000		16	0.065	Butyrate	4000	
RDG1274D	1.000		16	0.065	Nylon	3500	

Item No.	Tube OD		Tube Gauge	Wall Thickness		Material	Bulk Pack Qty.
	in			in			
RDG1275A	1.000		16	0.065	ABS	4000	
RDG1280A	1.000		17	0.058	ABS	3500	
RDG1285A	1.000		18	0.049	ABS	3500	
RDG1290A	1.000		19	0.042	ABS	3500	
RDG1295C	1.000		20	0.035	ABS	3500	
RDG1305C	1.125		12	0.109	ABS	2500	
RDG1310A	1.125		14	0.083	ABS	2800	
RDG1315A	1.125		16	0.065	ABS	2800	
RDG1320B	1.125		18	0.049	ABS	2800	
RDG1325A	1.125		19	0.042	ABS	2800	
RDG1327B	1.130		20	0.035	LDPE	2400	
RDG1330A	1.250		11	0.120	ABS	2500	
RDG1335C	1.250		12	0.109	ABS	2500	
RDG1340A	1.250		14	0.083	ABS	2300	
RDG1345A	1.250		16	0.065	ABS	2300	
RDG1350D	1.250		18	0.049	ABS	2300	
RDG1355A	1.375		13	0.095	ABS	1100	
RDG1360A	1.375		14	0.083	ABS	2000	
RDG1365A	1.375		16	0.065	ABS	2000	
RDG1370C	1.375		18	0.049	ABS	2000	
RDG1375A	1.375		20	0.035	ABS	1600	
RDG1380A	1.500		12	0.109	ABS	1200	
RDG1385A	1.500		14	0.083	ABS	1500	
RDG1390A	1.500		16	0.065	ABS	1500	
RDG1394B	1.500		18	0.049	Butyrate	1400	
RDG1395D	1.500		18	0.049	ABS	1500	
RDG1400A	1.500		19	0.042	ABS	1500	
RDG1405A	1.500		20	0.035	ABS	1500	
RDG1408B	1.625		16	0.065	Nylon	1400	
RDG1410A	1.625		18	0.049	ABS	1000	
RDG1415A	1.750		11	0.120	ABS	1100	
RDG1420A	1.750		14	0.083	ABS	1100	
RDG1425A	1.750		16	0.065	ABS	1100	
RDG1430A	1.750		18	0.049	ABS	1100	
RDG1435A	1.750		20	0.035	ABS	1000	
RDG1445A	2.000		11	0.120	ABS	850	
RDG1455A	2.000		16	0.065	ABS	850	
RDG1460A	2.000		18	0.049	ABS	850	
RDG1465A	2.000		20	0.035	ABS	1000	
RDG1470A	2.500		18	0.049	ABS	500	
RDG1475A	3.000		13	0.095	ABS	500	

**RLI Series****Round Low Profile Insert Glides****Specifications:**

- Material: Low-Density Polyethylene
- Color: Black

**Features:**

- Lightweight insert glides present a low-cost option for neatly finishing steel tubes



Item No.	Tube OD		Tube Gauge	Wall Thickness		Bulk Pack Qty.
	in	mm		in		
RLI0516A	0.500	12.70	16	0.065	10000	
RLI0518A	0.500	12.70	18	0.049	10000	
RLI0520A	0.500	12.70	20	0.035	10000	
RLI0616A	0.625	15.87	16	0.065	10000	
RLI0618A	0.625	15.87	18	0.049	10000	
RLI0716A	0.750	19.05	16	0.065	5000	
RLI0718A	0.750	19.05	18	0.049	5000	
RLI0816A	0.875	22.22	16	0.065	5000	
RLI0818A	0.875	22.22	18	0.049	5000	
RLI1016A	1.000	25.40	16	0.065	5000	

Item No.	Tube OD		Tube Gauge	Wall Thickness		Bulk Pack Qty.
	in	mm		in		
RLI1018A	1.000	25.40	18	0.049	5000	
RLI1116A	1.125	28.57	16	0.065	4000	
RLI1118A	1.125	28.57	18	0.049	4000	
RLI1216A	1.250	31.75	16	0.065	2500	
RLI1218A	1.250	31.75	18	0.049	2500	
RLI1516A	1.500	38.10	16	0.065	2000	
RLI1518A	1.500	38.10	18	0.049	2000	
RLI1716A	1.750	44.45	16	0.065	1500	
RLI1718A	1.750	44.45	18	0.049	1500	
RLI2018A	2.000	50.80	18	0.049	800	

# ROUND TUBE INSERT GLIDES



## Round Metric Low Profile Insert Glides

**Specifications:**

- Material: Low-Density Polyethylene
- Color: Black

**Features:**

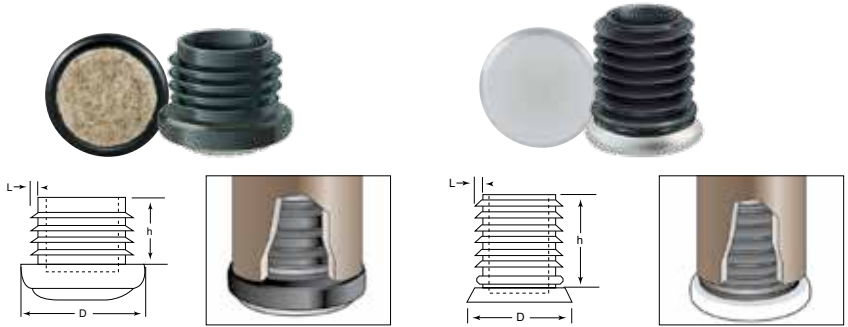
- Low profile design allows for a finishing component with limited space



Item No.	Tube OD		Wall Thickness mm	Bulk Pack Qty.
	mm	Tube Gauge		
466562	10	16 - 20	0.80 - 1.50	5000
466563	12	14 - 16	1.50 - 2.00	5000
RDR466565A	15	16 - 20	0.80 - 2.00	2000
466568	19	16 - 20	0.80 - 2.00	2000
466569	20	13 - 20	0.80 - 2.50	2000
466570	22	13 - 20	1.00 - 2.50	2000
466571	24	13 - 20	1.00 - 2.50	2000
466572	25	13 - 20	1.00 - 2.50	3500
466573	28	13 - 20	0.80 - 2.50	3000
466574	30	13 - 20	0.80 - 2.50	2500

Item No.	Tube OD		Wall Thickness mm	Bulk Pack Qty.
	mm	Tube Gauge		
466575	32	13 - 20	0.80 - 2.50	2250
466576	35	11 - 19	1.00 - 3.00	1750
466577	38	11 - 19	1.00 - 3.00	1500
466578	40	11 - 19	1.00 - 3.00	1500
460789	42	13 - 20	0.80 - 2.50	1250
466579	45	11 - 19	1.00 - 3.00	1000
466580	50	13 - 20	1.00 - 2.50	800
466581	55	11 - 19	1.00 - 3.00	700
466582	60	11 - 16	1.50 - 3.00	500

## GSB & GFB Series Round Ribbed Inserts Felt and Steel Based



**Specifications:**

- Insert Material: Nylon
- Base Material: See Table
- Color: Black

Felt	Steel
Wood and other soft surfaces	Smooth surfaces

GFB Series

GSB Series

Item No.	Bulk Pack Qty.	Item No.	Bulk Pack Qty.	D		h		L= Fits	
				in	mm	in	mm	Wall (in)	Gauge
GFB465536A	1750	GSB465537A	2000	0.787	20.00	0.748	19.00	0.060 - 0.090	14 - 17
—	2500	GSB465539A	1750	0.866	22.00	0.748	19.00	0.060 - 0.090	14 - 17
GFB465540A	2250	GSB465541A	1250	0.984	25.00	0.748	19.00	0.060 - 0.090	14 - 17
GFB465542A	1500	GSB465543A	1000	1.102	28.00	0.748	19.00	0.060 - 0.090	14 - 17
GFB465544A	1250	GSB465545A	900	1.181	30.00	0.748	19.00	0.060 - 0.090	14 - 17
GFB465546A	1250	GSB465547A	800	1.260	32.00	0.748	19.00	0.060 - 0.090	14 - 17

## TSNB, TSFB & TSSB SERIES Round Ribbed Inserts Nylon, Felt & Steel Based

Nylon	Felt	Steel
Hard surfaces	Wood and other soft surfaces	Smooth surfaces



TSNB Series

TSSB Series

TSFB Series

Item No.	Bulk Pack Qty.	Item No.	Bulk Pack Qty.	Item No.	Bulk Pack Qty.	D		d		h		L	
						in	mm	in	mm	in	mm	Wall Thickness in	Tube Gauge
TSNB465553A	1000	TSFB465551A	1250	TSSB465552A	1250	0.984	25.00	0.748	19.00	0.965	24.50	0.060 - 0.090	14 - 17
TSNB465556A	1000	TSFB465554A	1000	TSSB465555A	1000	0.984	25.00	0.866	22.00	0.965	24.50	0.060 - 0.090	14 - 17
—	800	TSFB465557A	800	TSSB465558A	1000	0.984	25.00	0.984	25.00	0.965	24.50	0.060 - 0.090	14 - 17
TSNB465562A	800	TSFB465560A	800	TSSB465561A	1250	0.984	25.00	1.102	28.00	0.965	24.50	0.060 - 0.090	14 - 17
TSNB465565A	1000	TSFB465563A	625	TSSB465564A	625	1.181	30.00	0.748	19.00	0.965	24.50	0.060 - 0.090	14 - 17
TSNB465568A	1000	TSFB465566A	500	TSSB465567A	500	1.181	30.00	0.787	20.00	0.965	24.50	0.060 - 0.090	14 - 17
TSNB465571A	800	TSFB465570A	400	TSSB465569A	400	1.181	30.00	0.866	22.00	0.965	24.50	0.060 - 0.090	14 - 17
TSNB465574A	800	—	—	TSSB465572A	400	1.181	30.00	0.984	25.00	0.965	24.50	0.060 - 0.090	14 - 17
TSNB465577A	800	TSFB465575A	350	TSSB465576A	375	1.181	30.00	1.102	28.00	0.965	24.50	0.060 - 0.090	14 - 17



# ROUND TUBE INSERT GLIDES

## BI & LBI Series Round Domed Tube Glides



**Specifications:**

- Material: See Table
- Color: Black

**Features:**

- Provides a neat finish for steel tubing

Item No.	Material	Tube OD		Tube Gauge	Wall Thickness		Bulk Pack Qty.
		in	mm		in	mm	
BI1000A	ABS	0.625	15.88	18	0.049	10000	
BI1100A	ABS	0.750	19.05	15	0.072	3000	
LBI1130A	LDPE	0.750	19.05	16	0.065	5500	
LBI1132A	LDPE	0.750	19.05	16	0.065	5500	
BI1110A	ABS	0.875	22.23	14	0.083	3500	
LBI1140A	LDPE	0.875	22.23	14	0.083	3500	
BI1120A	ABS	0.875	22.23	16	0.065	3500	
BI1130A	ABS	0.875	22.23	20	0.035	4000	
BI1140A	ABS	1.000	25.40	14	0.083	2700	
BI1150A	ABS	1.000	25.40	16	0.065	2500	
LBI1180A	LDPE	1.000	25.40	16	0.065	3000	
BI1160A	ABS	1.000	25.40	18	0.049	2500	

Item No.	Material	Tube OD		Tube Gauge	Wall Thickness		Bulk Pack Qty.
		in	mm		in	mm	
LBI1190A	LDPE	1.000	25.40	18	0.049	3100	
BI1170A	ABS	1.000	25.40	20	0.035	2600	
BI1180A	ABS	1.125	28.58	12	0.109	2000	
BI1200A	ABS	1.125	28.58	16	0.065	2500	
BI1210A	ABS	1.125	28.58	18	0.049	1600	
BI1220A	ABS	1.228	31.19	14	0.083	1600	
BI1230A	ABS	1.250	31.75	16	0.065	1500	
BI1240A	ABS	1.375	34.93	14	0.083	1200	
BI1250A	ABS	1.500	38.10	11	0.120	1000	
BI1260A*	ABS	1.500	38.10	14	0.083	1000	
BI1270A	ABS	1.500	38.10	16	0.065	1000	

\* This part has a textured (not polished) finish

## DFRD Series Round Domed Tube Inserts



**Specifications:**

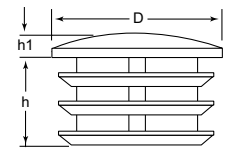
- Material: Low-Density Polyethylene
- Color: Black

**Features:**

- Can accommodate any degree of leg angle, while the horizontal ribbed design has built-in flexibility to fit multiple tube gauge sizes

Item No.	Tube OD		Tube Gauge	Wall Thickness		Bulk Pack Qty.
	in	mm		in	mm	
DFRD111522A	0.875	22.22	14 - 20	0.035 - 0.083	2000	
DFRD121620A	1.250	31.75	14 - 18	0.049 - 0.083	2000	

## RDP Series Round Ribbed Tube Inserts Chrome Finish



Item No.	D		h		h1		Wall Thickness		Bulk Pack Qty.
	in	mm	in	mm	in	mm	Tube Gauge (in)	mm	
RDP465335A	0.512	13.00	0.315	8.00	0.079	2.00	14-19 (.040-.080)	1.0-2.0	1000
RDP463586A	0.630	16.00	0.394	10.00	0.079	2.00	14-19 (.040-.080)	1.0-2.0	2000
RDP465333A	0.709	18.00	0.394	10.00	0.079	2.00	14-19 (.040-.080)	1.0-2.0	2000
RDP465336A	0.750	19.05	0.394	10.00	0.079	2.00	14-19 (.040-.080)	1.0-2.0	1000
RDP465338A	0.787	20.00	0.394	10.00	0.118	3.00	14-19 (.040-.080)	1.0-2.0	3000
RDP465334A	0.866	22.00	0.433	11.00	0.118	3.00	14-19 (.040-.080)	1.0-2.0	3000
RDP462994A	0.984	25.00	0.591	15.00	0.118	3.00	14-19 (.040-.080)	1.0-2.0	2000
RDP463587A	1.102	28.00	0.591	15.00	0.118	3.00	14-19 (.040-.080)	1.0-2.0	500
RDP463020A	1.181	30.00	0.630	16.00	0.118	3.00	14-19 (.040-.080)	1.0-2.0	500
RDP463588A	1.260	32.00	0.630	16.00	0.118	3.00	14-19 (.040-.080)	1.0-2.0	250
RDP463021A	1.378	35.00	0.630	16.00	0.118	3.00	14-19 (.040-.080)	1.0-2.0	500
RDP465337A	1.496	38.00	0.630	16.00	0.118	3.00	14-19 (.040-.080)	1.0-2.0	250
RDP463022A	1.575	40.00	0.630	16.00	0.118	3.00	14-19 (.040-.080)	1.0-2.0	250
RDP465339A	1.772	45.00	0.630	16.00	0.118	3.00	14-19 (.040-.080)	1.0-2.0	250
RDP463023A	1.969	50.00	0.472	12.00	0.118	3.00	16-17 (.065 - 0.058)	1.50	200
RDP465332A	2.362	60.00	0.472	12.00	0.118	3.00	16-17 (.065 - 0.058)	1.50	200

**Specifications:**

- Material: Low-Density Polyethylene
- Color: Black with High-Polished Metal-Finish Shell

**Features:**

- Polished metallic finish provides enhanced aesthetic appearance
- Horizontal ribbing allows for built-in flexibility to fit multiple tube gauges

## ROUND THREADED INSERT GLIDES


**TAR Series**  
**Round Threaded All Metal Inserts**

## Specifications:

- Material: Steel with Zinc plated finish

## Features:

- Metal ribs lock onto inside of round tube



## Imperial

Item No.	Tube OD		Thread Size	Tube Gauge	Bulk Pack Qty.
	in				
TAR010A	5/8		1/4 - 20	16 - 18	1000
TAR020A	3/4		1/4 - 20	16 - 18	1000
TAR030A	7/8		1/4 - 20	16 - 18	1000
TAR230A	7/8		5/16 - 18	16 - 18	1000
TAR040A	1		1/4 - 20	16 - 18	1000
TAR240A	1		5/16 - 18	16 - 18	1000
TAR260A	1-1/4		5/16 - 18	16 - 18	500
TAR460A	1-1/4		3/8 - 16	16 - 18	500
TAR270A	1-1/2		5/16 - 18	16 - 18	500
TAR470A	1-1/2		3/8 - 16	16 - 18	500

## Metric

Item No.	Tube OD		Thread Size	Tube Gauge		Bulk Pack Qty.
	mm			mm		
499455	19		M6	1		200
499456	22		M6	1		200
499457	25		M6	1		200
551836	51		M6	1.2		200
499458	25		M8	1.2		200
499460	32		M8	1.2		200
499461	38		M8	1.2		200
551837	51		M8	1.2		200
551838	25		M10	1.2		200
499463	32		M10	1.5		200
499464	38		M10	1.5		200
551839	51		M10	1.5		200

**LRT & RTI Series**  
**Round Plastic Threaded Inserts**

## Specifications:

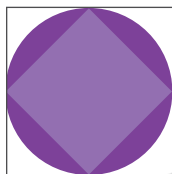
- Material: See Table
- Color: See Table

## Features:

- Accommodates adjustable leveling mounts and feet



Item No.	Color	Material	Tube OD		Tube Gauge	Thread Size	Bulk Pack Qty.
			in				
LRT1100A	Natural	HDPE	0.625		18	1/4 - 20	4200
LRT1100B	Black	HDPE	0.625		18	1/4 - 20	4200
RTI1100A	Natural	Nylon	0.750		17	1/4 - 20	4000
RTI1100B	Black	Nylon	0.750		17	1/4 - 20	4000
LRT1110A	Natural	HDPE	0.750		18	1/4 - 20	4000
LRT1120A	Natural	HDPE	0.875		18	1/4 - 20	3800
LRT1130A	Natural	HDPE	1.000		16	1/4 - 20	3500
RTI1210A	Natural	Nylon	1.000		16	1/4 - 20	2000
LRT1140A	Natural	HDPE	1.000		18	1/4 - 20	3000



# END CAPS



**FREE  
SAMPLES  
AVAILABLE**

800 847 0486

[www.essentracomponents.com](http://www.essentracomponents.com)

**ROUND THREADED INSERT GLIDES****RDH Series****Round Heavy Duty Threaded Inserts**

## Specifications:

- Material: Glass-Filled Nylon with Brass Threaded Insert
- Color: Black

## Features:

- Threaded brass insert for indoor and outdoor use
- High load rating is ideal for machinery use

**Imperial**

Item No.	Tube Size In	Thread Size	Tube Gauge	Wall Thickness In	Max Static Load N	Bulk Pack Qty.
RDH0100A	1.500	3/8 - 16	16	0.065	1100	48
RDH0150A	1.500	1/2 - 13	16	0.065	1100	48
RDH0200A	1.500	5/8 - 11	16	0.065	1100	48
RDH0250A	1.500	3/4 - 10	16	0.065	1100	48
RDH0300A	2.000	3/8 - 16	16	0.065	1250	24
RDH0350A	2.000	1/2 - 13	16	0.065	1250	24
RDH0400A	2.000	5/8 - 11	16	0.065	1250	24
RDH0450A	2.000	3/4 - 10	16	0.065	2000	24
RDH0500A	2.000	3/8 - 16	12	0.109	1250	24
RDH0550A	2.000	1/2 - 13	12	0.109	1250	24
RDH0600A	2.000	5/8 - 11	12	0.109	1250	24
RDH0650A	2.000	3/4 - 10	12	0.109	2000	24

**Metric**

Item No.	Tube Size mm	Thread Size mm	Tube Gauge mm	Max Static Load N	Bulk Pack Qty.
1286377	30	M10	1	4500	48
1286378	30	M12	1	4500	48
1286379	30	M16	1	4500	48
1286380	38	M10	1.5	5000	48
1286381	38	M12	1.5	5000	48
1286382	38	M16	1.5	5000	48
1286383	42	M10	1.5	5000	48
1286384	42	M12	1.5	5000	48
1286385	42	M16	1.5	5000	48
1286386	42	M20	1.5	5000	48
1286387	48	M10	1.5	5500	24
1286388	48	M12	1.5	5500	24
1286389	48	M16	1.5	5500	24
1286390	48	M20	1.5	8500	24
1286391	50	M12	1.5	5500	24
1286392	50	M16	1.5	5500	24
1286393	50	M20	1.5	8500	24

**RDM Series****Round Metal Threaded Inserts**

## Specifications:

- Material: High-Density Polyethylene with Zinc-Plated Steel-Threaded Insert
- Color: Black

## Features:

- Tube inserts with internal threads to accommodate adjustable leveling mounts and feet
- Ribbed to accommodate multiple gauges



Sizing &amp; Selector

**GUIDE**

See Page 282

**Imperial**

Item No.	Tube Size	Thread Size	Gauge	Wall Thickness in	Bulk Pack Qty.
RDM0100A	0.750	1/4 - 20	16 - 18	0.049 - 0.065	1000
RDM0150A	0.875	1/4 - 20	16 - 18	0.049 - 0.065	1000
RDM0200A	0.875	1/4 - 20	12 - 14	0.083 - 0.109	1000
RDM0250A	0.875	1/4 - 20	10 - 11	0.120 - 0.134	1000
RDM0300A	1.000	1/4 - 20	16 - 18	0.049 - 0.065	1000
RDM0350A	1.000	5/16 - 18	16 - 18	0.049 - 0.065	1000
RDM0400A	1.000	1/4 - 20	12 - 14	0.083 - 0.109	750
RDM0450A	1.000	5/16 - 18	12 - 14	0.083 - 0.109	750
RDM0500A	1.000	1/4 - 20	10 - 11	0.120 - 0.134	750
RDM0550A	1.000	5/16 - 20	10 - 11	0.120 - 0.134	750
RDM0600A	1.125	5/16 - 18	16 - 18	0.049 - 0.065	500
RDM0650A	1.125	3/8 - 16	16 - 18	0.049 - 0.065	500
RDM0700A	1.250	5/16 - 18	16 - 18	0.049 - 0.065	500
RDM0750A	1.250	3/8 - 16	16 - 18	0.049 - 0.065	500
RDM0800A	1.250	5/16 - 18	12 - 14	0.083 - 0.109	500
RDM0950A	1.375	3/8 - 16	16 - 18	0.049 - 0.065	500
RDM1050A	1.500	5/16 - 18	16 - 18	0.049 - 0.065	500
RDM1100A	1.500	3/8 - 16	16 - 18	0.049 - 0.065	500
RDM1150A	1.500	5/16 - 18	12 - 14	0.083 - 0.109	500
RDM1200A	1.500	3/8 - 16	12 - 14	0.083 - 0.109	500
RDM2000A	2.000	5/16 - 18	14 - 16	0.065 - 0.083	500
RDM2050A	2.000	3/8 - 16	14 - 16	0.065 - 0.083	500

**Metric**

Item No.	Tube Size mm	Thread Size mm	Gauge	Wall Thickness mm	Bulk Pack Qty.
498560	19	M6	17 - 19	1.1 - 1.5	1000
498561	20	M6	17 - 19	1.1 - 1.5	1000
498562	20	M8	17 - 19	1.1 - 1.5	1000
498563	25	M6	17 - 19	1.1 - 1.5	500
498564	25	M8	17 - 19	1.1 - 1.5	1000
498565	30	M8	17 - 19	1.1 - 1.5	500
498566	30	M10	17 - 19	1.1 - 1.5	500
498567	32	M8	17 - 19	1.1 - 1.5	500
498568	32	M10	17 - 19	1.1 - 1.5	1000
498569	35	M8	17 - 19	1.1 - 1.5	500
498570	35	M10	17 - 19	1.1 - 1.5	250
498571	38	M8	17 - 19	1.1 - 1.5	250
498572	38	M10	17 - 19	1.1 - 1.5	500
498573	38	M12	17 - 19	1.1 - 1.5	500
498574	40	M8	17 - 19	1.1 - 1.5	250
498575	40	M10	17 - 19	1.1 - 1.5	250
498576	40	M12	17 - 19	1.1 - 1.5	500
498577	50	M8	17 - 19	1.1 - 1.5	100
498578	50	M10	17 - 19	1.1 - 1.5	500
498579	50	M12	17 - 19	1.1 - 1.5	100
498580	60	M8	17 - 19	1.1 - 1.5	250
498581	60	M10	17 - 19	1.1 - 1.5	100
498582	60	M12	17 - 19	1.1 - 1.5	100





## ROUND INSERT GLIDES / ROUND FERRULE CAPS

### RAG Series Round Angled Tube Inserts

**Specifications:**

- Material: Nylon
- Color: See Table

**Features:**

- Ideal for applications with fixed leg angles
- Round angle insert glides fit flush with tubing outer dimensions for a clean, finished look
- Ideal for load bearing applications



Item No.		Tube OD	Tube Gauge	Wall Thickness	Degree	Bulk Pack Qty.
Black	Natural	in		in		
RAG1220A	RAG1220B	0.750	16	0.065	25.5°	2500
RAG1240A	RAG1240B	0.875	16	0.065	19°	3500
RAG1260A	RAG1260B	0.875	17	0.058	19°	3500
RAG1270A	RAG1270B	1.000	16	0.065	12°	3200
—	RAG1280B	1.000	16	0.065	19°	3000
RAG1310A	RAG1310B	1.000	18	0.049	12°	3000

Item No.		Tube OD	Tube Gauge	Wall Thickness	Degree	Bulk Pack Qty.
Black	Natural	in		in		
—	RAG1320B	1.000	18	0.049	19°	3000
RAG1325A	RAG1325B	1.125	16	0.065	15°	2000
RAG1340A	RAG1340B	1.250	16	0.065	15°	1800
RAG1350A	RAG1350B	1.250	17	0.058	7°	900
RAG1360A	RAG1360B	1.250	18	0.049	15°	1200
RAG1375A	RAG1375B	1.500	16	0.065	19°	900

### HLD Series High Line Domed Ferrule Caps

**Specifications:**

- Material: Elastomeric Polyethylene
- Color: See Table

**Features:**

- High-line domed caps are tall and durable
- Ideal for non-skid applications
- Thinner wall section results in ease of installation



Item No.		Tube OD		Bulk Pack Qty.
Black	White	in	mm	
HLD0750A	HLD0750C	0.750	19.05	1100
HLD0875A	HLD0875C	0.875	22.22	1100
HLD1000A	HLD1000C	1.000	25.40	2000

### HDC Series Heavy Duty Ferrule Caps

**Specifications:**

- Material: Low-Density Polyethylene
- Color: Black

**Features:**

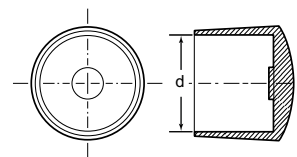
- Style A – Low-silhouette cap for general applications (1/2" height)
- Style B – High-line cap for heavy-duty applications (1" height)
- Style C – Heavy-duty caps, designed for institutional applications, incorporate a thick internal ledge to resist cut-thru by sharp tubing ends (1" height)



Item No.	Tube OD		Style	Bulk Pack Qty.
	in	mm		
HDC0375A	0.375	9.53	B	10000
HDC0750A	0.750	19.05	A	6500
HDC0875A	0.875	22.23	B	3000
HDC1125A	1.125	28.58	C	650
HDC1250A	1.250	31.75	A	1800
HDC1500A	1.500	38.10	A	1300

### FRD Series Round Ferrule Caps

Item No.	Tube OD (d)	Bulk Pack Qty.
	in	
FRD0437A	0.437	10000
FRD0500A	0.500	10000
FRD0625A	0.625	5000
FRD0750A	0.750	4000
FRD0875A	0.875	2500
FRD1000A	1.000	1500
FRD1125A	1.125	1000
FRD1250A	1.250	1000
FRD1500A	1.500	500
FRD1750A	1.750	500
FRD2000A	2.000	300
FRD3000A	3.000	150



**Specifications:**

- Material: Low-Density Polyethylene
- Color: Black

**Features:**

- Provides a neat finish to products manufactured from tubular steel





## ROUND TUBE CAPS

### RSC/LLD Series Round End Caps

Specifications:

- Material: Low-Density Polyethylene (RSC) or Elastomeric Polyethylene (LLD)
- Color: Black

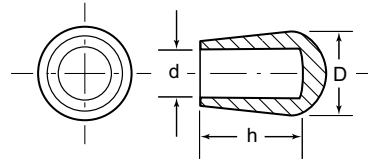
Features:

- An integrated step lead permits fast positioning and quick assembly for an economical and attractive way of finishing the end of a rod or tube
- The LLD caps have a thick rounded base for long wear and use on a wide range of leg angles



Item No.	Tube OD		Bulk Pack Qty.
	in		
RSC0375A	0.375		12000
RSC0500A	0.500		7000
RSC0625A	0.625		5000
RSC0750A	0.750		3000
RSC0875A	0.875		3000
RSC1000A	1.000		2500
LLD1000A	1.000		1500
RSC1125A	1.125		1600
RSC1250A	1.250		1800

### FTP Series Round Tapered Ferrule Caps



Specifications:

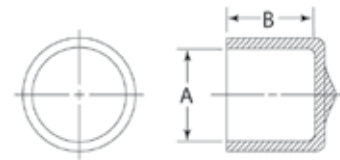
- Material: See Table
- Color: Black

Features:

- Tapered ferrules are often used as a safety cap on protruding steel rods or bars

Item No.	Tube OD (d)		D	Material	Bulk Pack Qty.
	in				
FTP0187A	0.187	0.468	0.406	PVC	10000
FTP0250A	0.250	0.468	0.406	PVC	10000
FTP0312A	0.312	0.562	0.500	PVC	10000
FTP0312LPA	0.312	0.906	0.516	LDPE	5000
FTP0375A	0.375	0.625	0.594	PVC	5000
FTP0500LPA	0.500	0.906	0.735	LDPE	4000

### DM Series Round Vinyl End Caps



Specifications:

- Material: PVC
- Color: White

Features:

- Designed to fit standard tube dimension
- Glossy Finish

Item No.	Tube OD		B	Bulk Pack Qty.
	in			
DM0750-1H	3/4		1	2500
DM0875-1G	7/8		1	2500
DM1000-1C	1		1	2000

We make finding your ideal product easy!

Need help? Call us!  
800 847 0486



# RECTANGLE TUBE INSERT GLIDES



## RCR Series Rectangular Ribbed Tube Inserts

### Specifications:

- Material: Low-Density Polyethylene
- Surface Finish: See Table
- Color: See Table

### Features:

- Perimeter rib design allows for easy assembly and secure fit
- Tube inserts fit a wider gauge range



### Imperial

Item No.	Color	Surface Finish	Tube Size		Bulk Pack Qty.
			in	Tube Gauge	
RCR111339A	Black	Polished	1.000 x 0.500	16 - 20	1000
RCR111356A	Black	Textured	1.000 x 0.500	16 - 20	1000
RCR111508A	Black	Polished	1.375 x 0.625	11 - 19	2500
RCR111546A	Black	Textured	1.375 x 0.625	11 - 19	2500
RCR111622A	White	Textured	1.375 x 0.625	11 - 19	2500
RCR111343A	Black	Polished	1.500 x 0.750	11 - 19	1000
RCR111360A	Black	Textured	1.500 x 0.750	11 - 19	1000
RCR111377A	White	Polished	1.500 x 0.750	11 - 19	1000
RCR111510A	Black	Polished	1.500 x 1.000	11 - 19	2000
RCR111548A	Black	Textured	1.500 x 1.000	11 - 19	2000
RCR111624A	White	Textured	1.500 x 1.000	11 - 19	2000
RCR111348A	Black	Polished	2.000 x 1.000	11 - 19	1000
RCR111365A	Black	Textured	2.000 x 1.000	11 - 19	1000
RCR111382A	White	Polished	2.000 x 1.000	11 - 19	1000
RCR111512A	Black	Polished	2.000 x 1.250	11 - 19	1000
RCR111550A	Black	Textured	2.000 x 1.250	11 - 19	1000
RCR111626A	White	Textured	2.000 x 1.250	11 - 19	1000
RCR25101618A	Black	Polished	2.500 x 1.000	16 - 18	1000
RCR25151216A	Black	Polished	2.500 x 1.500	12 - 16	500
RCR111514A	Black	Polished	3.000 x 1.500	8 - 14	250
RCR111552A	Black	Textured	3.000 x 1.500	8 - 14	250
RCR111628A	White	Textured	3.000 x 1.500	8 - 14	250
RCR111516A	Black	Polished	3.000 x 2.000	8 - 14	250
RCR111554A	Black	Polished	3.000 x 2.000	8 - 14	250

### Metric

Item No.	Color	Finish	Tube Size		Bulk Pack Qty.
			mm	Tube Gauge	
RCR111338A	Black	Polished	25 x 10	16 - 20	2000
RCR111355A	Black	Textured	25 x 10	16 - 20	2000
RCR199254A	Black	Polished	30 x 10	17 - 20	5000
RCR111340A	Black	Polished	30 x 15	11 - 19	1000
RCR111357A	Black	Textured	30 x 15	11 - 19	1000
RCR111341A	Black	Polished	30 x 20	11 - 19	1000
RCR111358A	Black	Textured	30 x 20	11 - 19	1000
RCR111509A	Black	Polished	35 x 20	11 - 19	2000
RCR111547A	Black	Textured	35 x 20	11 - 19	2000
RCR466544A	Black	Textured	40 x 15	14 - 17	1000
RCR111344A	Black	Polished	40 x 20	11 - 19	1000
RCR111361A	Black	Textured	40 x 20	11 - 19	1000
RCR111511A	Black	Polished	40 x 25	8 - 14	1500
RCR111549A	Black	Textured	40 x 25	8 - 14	1500
RCR111481A	Black	Polished	60 x 30	11 - 19	500
RCR111482A	Black	Textured	60 x 30	11 - 19	500
RCR111802A	Black	Polished	60 x 40	11 - 19	500
RCR111803A	Black	Textured	60 x 40	11 - 19	500
RCR111351A	Black	Polished	60 x 40	8 - 14	500
RCR111368A	Black	Textured	60 x 40	8 - 14	500
RCR460727A	Black	Textured	70 x 25	14 - 19	500
RCR199283A	Black	Textured	75 x 25	14 - 16	500
RCR111515A	Black	Polished	75 x 50	8 - 14	250
RCR111553A	Black	Textured	75 x 50	8 - 14	250
RCR111474A	Black	Textured	80 x 40	11 - 19	250
RCR111353A	Black	Polished	80 x 50	8 - 14	250
RCR111370A	Black	Textured	80 x 50	8 - 14	250
RCR460736A	Black	Textured	90 x 40	8 - 14	300
RCR199231A	Black	Textured	100 x 40	8 - 14	250
RCRM10502040A	Black	Textured	100 x 50	10 - 14	200
RCR460743A	Black	Textured	120 x 30	13 - 19	300
RCR460749A	Black	Textured	150 x 50	8 - 14	100

## RTG Series Rectangular Load Bearing Glides

### Specifications:

- Material: ABS
- Color: Black

### Features:

- Suitable for heavy-duty applications
- Step lead provides for easy installation
- Press fit assures a secure hold in tubing



See Page 282

Item No.	Tube Size		Wall Thickness	Bulk Pack Qty.
	in	Tube Gauge		
RTG1100A	0.500 x 1.000	16	0.065	6000
RTG1110A	0.500 x 1.000	18	0.049	3800
RTG1120A	0.500 x 1.250	16	0.065	5000
RTG1150A	0.500 x 1.500	16	0.065	4000
RTG1160A	0.500 x 1.500	18	0.049	4000
RTG1190A	0.750 x 1.250	18	0.049	2800
RTG1210A	0.750 x 1.500	14	0.083	2500
RTG1220A	0.750 x 1.500	16	0.065	2200
RTG1230A	0.750 x 1.500	18	0.049	2200
RTG1240A	0.750 x 2.000	16	0.065	2000
RTG1250A	1.000 x 1.500	11	0.120	2000
RTG1270A	1.000 x 1.500	14	0.083	2000
RTG1280A	1.000 x 1.500	16	0.065	1800
RTG1290A	1.000 x 1.500	18	0.049	2100
RTG1310A	1.000 x 2.000	11	0.120	1400
RTG1340A	1.000 x 2.000	14	0.083	1400
RTG1350A	1.000 x 2.000	16	0.065	1200
RTG1359B	1.000 X 2.000	17	0.058	1400
RTG1370A	1.000 x 2.000	18	0.049	1400
RTG1390A	1.000 x 3.000	11	0.120	1300
RTG1400A	1.000 x 3.000	14	0.083	1300

Item No.	Tube Size		Wall Thickness	Bulk Pack Qty.
	in	Tube Gauge		
RTG1410A	1.000 x 3.000	16	0.065	1300
RTG1420A	1.250 x 2.000	12	0.109	1200
RTG1430A	1.250 x 2.000	14	0.083	800
RTG1440A	1.250 x 2.000	16	0.065	800
RTG1450A	1.500 x 2.000	11	0.120	900
RTG1460A	1.500 x 2.000	14	0.083	900
RTG1470A	1.500 x 2.000	15	0.072	900
RTG1480A	1.500 x 2.000	16	0.065	900
RTG1490A	1.500 x 2.500	11	0.120	500
RTG1500A	1.500 x 2.500	12	0.109	600
RTG1510A	1.500 x 2.500	16	0.065	900
RTG1521A	1.500 x 3.000	11	0.120	900
RTG1530A	1.500 x 3.000	14	0.083	1000
RTG1540A	1.500 x 3.000	16	0.065	500
RTG1550A	1.500 x 4.000	16	0.065	500
RTG1560A	2.000 x 3.000	11	0.120	700
RTG1570A	2.000 x 3.000	14	0.083	700
RTG1580B	2.000 x 4.000	11	0.120	350
RTG1590B	2.000 x 4.000	13	0.095	350
RTG1600B	2.000 x 4.000	16	0.065	350



# THREADED INSERTS

## RCM Series

### Rectangular Metal Threaded Inserts

**Specifications:**

- Material: High-Density Polyethylene with Zinc-Plated Steel-Threaded Insert
- Color: Black

**Features:**

- Tube inserts with internal threads to accommodate adjustable leveling mounts and feet
- Ribbed to accommodate multiple gauges



**Imperial**

Item No.	Tube Size in	Thread Size in	Tube Gauge in	Wall Thickness in	Bulk Pack Qty.
RCM0150A	0.75 x 1.50	1/4 - 20	16 - 18	0.049 - 0.065	500
RCM0250A	1.00 x 1.50	1/4 - 20	16 - 18	0.049 - 0.065	500
RCM0300A	1.00 x 1.50	5/16 - 18	16 - 18	0.049 - 0.065	500
RCM0350A	2.00 x 1.00	5/16 - 18	16 - 18	0.049 - 0.065	250
RCM0400A	2.00 x 1.00	5/16 - 18	14 - 16	0.065 - 0.083	250
RCM0600A	3.00 x 1.50	3/8 - 16	14 - 16	0.065 - 0.083	250

**Metric**

Item No.	Tube Size mm	Thread Size mm	Tube Gauge mm	Wall Thickness mm	Bulk Pack Qty.
498598	30 x 20	M8	17 - 19	1.1 - 1.5	500
498599	30 x 20	M10	17 - 19	1.1 - 1.5	1000
498600	40 x 20	M8	17 - 19	1.1 - 1.5	250
498601	40 x 20	M10	17 - 19	1.1 - 1.5	500
498602	40 x 30	M8	17 - 19	1.1 - 1.5	500
498603	40 x 30	M10	17 - 19	1.1 - 1.5	500
498604	50 x 25	M8	17 - 19	1.1 - 1.5	250
498605	50 x 25	M10	17 - 19	1.1 - 1.5	500
498606	50 x 30	M8	17 - 19	1.1 - 1.5	200
498607	50 x 30	M10	17 - 19	1.1 - 1.5	500
498608	60 x 30	M8	17 - 19	1.1 - 1.5	250
498609	60 x 30	M10	17 - 19	1.1 - 1.5	250

## SAI Series

### Square Ribbed Inserts with Adjustable Feet

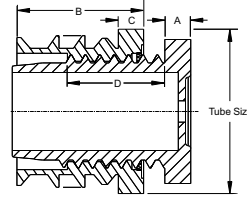


**Specifications:**

- Material: Nylon
- Color: Black

**Features:**

- Rugged, durable, heavy duty
- Resists lateral stresses
- Threaded insert and height adjuster in one piece



Item No.	Square Tube Size		Fits		Reference Dimensions				Axial Load	Bulk Pack Qty.
	in	mm	Tube Gauge	mm	A	B	C	D	lbs	
SAI100A	0.750	20.00	14 - 18	1.5 - 2.0	0.158	0.866	0.197	0.945	220	100
SAI200A	0.875	22.00	14 - 18	1.5 - 2.0	0.158	0.866	0.197	0.945	220	200
SAI300A	1.000	25.00	14 - 18	1.5 - 2.0	0.197	0.985	0.197	0.906	330	300
SAI400A	1.181	30.00	14 - 18	1.5 - 2.0	0.197	0.985	0.197	0.787	660	100
SAI500A	1.375	35.00	14 - 18	1.5 - 2.0	0.197	1.358	0.197	0.787	660	100
SAI600A	1.500	40.00	14 - 18	1.5 - 2.0	0.197	1.358	0.197	0.787	660	100
SAI700A	1.750	45.00	14 - 18	1.5 - 2.0	0.197	1.358	0.197	1.102	660	100
SAI800A	2.000	50.00	14 - 18	1.5 - 2.0	0.197	1.358	0.197	1.142	660	100

## RAI Series

### Round Ribbed Inserts with Adjustable Feet

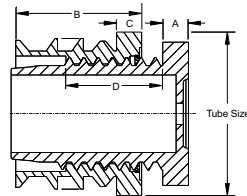


**Specifications:**

- Material: Nylon
- Color: Black

**Features:**

- Rugged, durable, heavy duty
- Resists lateral stresses
- Threaded insert and height adjuster in one piece



Item No.	Tube Size		Fits		Reference Dimensions				Axial Load	Bulk Pack Qty.
	in	mm	Tube Gauge	mm	A Ref	B Ref	C Ref	D Ref	lbs	
RAI100A	1.250	32	14 - 18	1.5-2.0	0.197	0.985	0.197	0.787	660	800
RAI200A	1.375	35	14 - 18	1.5-2.0	0.197	1.358	0.197	0.787	660	100
RAI300A	1.500	40	14 - 18	1.5-2.0	0.197	1.358	0.197	0.787	660	100
RAI400A	1.750	45	14 - 18	1.5-2.0	0.197	1.358	0.197	1.102	660	100
RAI500A	2.000	50	14 - 18	1.5-2.0	0.197	1.358	0.197	1.181	660	100
RAI600A	2.375	60	14 - 18	1.5-2.0	0.394	1.595	0.236	1.457	660	100
RAI700A	3.125	80	14 - 18	1.5-2.0	0.394	1.595	0.236	1.457	660	100

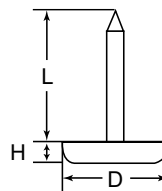


# TACK, SCREW-IN & ADHESIVE GLIDES

## TKG Series Tack Glides

**Specifications:**

- Material: High-Density Polyethylene with Nickel Plated Nail
- Color: See Table



**Features:**

- Ideal for wooden furniture

Item No.		D		H		L		Bulk Pack Qty.
Natural	Brown	in	mm	in	mm	in	mm	
TKG1010A	TKG1010B	0.625	15.88	0.250	6.35	0.719	18.26	6000
TKG1020A	TKG1020B	0.750	19.05	0.250	6.35	0.719	18.26	4500
TKG1030A	TKG1030B	0.875	22.23	0.250	6.35	0.719	18.26	4000
TKG1040A	TKG1040B	1.000	25.40	0.250	6.35	0.719	18.26	3000

## TKT Series PTFE Based Glide

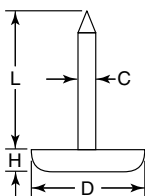


**Specifications:**

- Material: PTFE
- Color: Natural

**Features:**

- Ideal when easy movement is essential



Item No.	D	H	L	C	Bulk Pack Qty.
499499	0.750	0.393	0.709	0.102	200
499500	0.870	0.393	0.709	0.102	200
499501	0.980	0.393	0.709	0.102	200
499502	1.180	0.393	0.709	0.102	200
499503	1.460	0.393	0.709	0.102	200

## Screw-In Glides

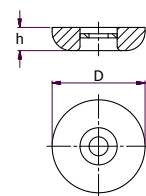


**Specifications:**

- Material: Glide: PTFE  
Material: Washer: Steel
- Color: Natural

**Features:**

- Includes metal screw
- Easy assembly



Item No.	D	H	Bulk Pack Qty.
	In	In	
499483	0.875	0.219	200
499484	1.000	0.203	200
499485	1.188	0.203	200
499486	1.500	0.220	200
499487	2.000	0.219	200

## Adhesive Glides

**Specifications:**

- Material: PTFE with adhesive backing
- Color: Natural

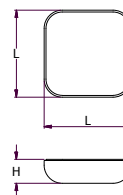
**Features:**

- Easy to apply
- Smooth glide action
- Protects surfaces



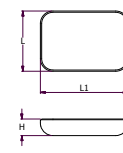
### Square

Item No.	L	H	Bulk Pack Qty.
	in	in	
499488	1.000	0.250	200
499490	1.188	0.250	200
499494	1.500	0.281	200
499495	1.750	0.281	200
499496	2.000	0.250	200



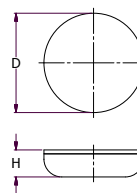
### Rectangular

Item No.	L	L1	H	Bulk Pack Qty.
	in	in	in	
499489	1.000	1.375	0.267	200
499497	0.750	2.750	0.250	200
499492	1.000	4.000	0.250	200



### Round

Item No.	D	H	Bulk Pack Qty.
	in	in	
499475	0.750	0.172	200
499476	0.875	0.250	200
499477	1.000	0.172	200
499478	1.188	0.172	200
499479	1.500	0.250	200
499480	2.000	0.250	200
499481	2.500	0.250	200





# PLASTIC BASED LEVELERS

## AFP & AFPM Series Articulating Adjustable Feet

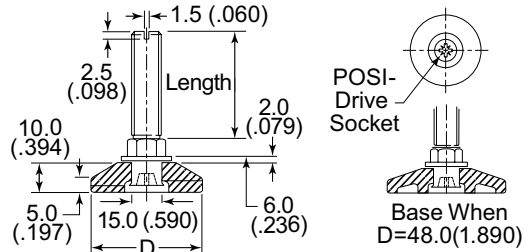


### Specifications:

- Material: Polypropylene, Low-Carbon Steel Stud with Zinc-Plated Finish
- Color: Black

### Features:

- Allows adjustment under load with base remaining stationary



### Imperial

Item No.	D (Base)		Stud Length	Bulk Pack Qty.
	in	Thread Size		
AFP25100A	0.984	1/4 - 20	0.750	100
AFP25110A	0.984	5/16 - 18	1.000	100
AFP25120A	0.984	5/16 - 18	1.500	100
AFP25130A	0.984	5/16 - 18	2.000	100
AFP25140A	0.984	5/16 - 18	2.750	100
AFP25150A	0.984	5/16 - 18	4.000	100
AFP30100A	1.181	5/16 - 18	1.000	100
AFP30110A	1.181	5/16 - 18	1.500	100
AFP30120A	1.181	5/16 - 18	2.000	100
AFP30130A	1.181	5/16 - 18	2.750	100
AFP30140A	1.181	5/16 - 18	3.000	100
AFP30150A	1.181	5/16 - 18	4.000	100
AFP30160A	1.181	3/8 - 16	1.000	100
AFP30180A	1.181	3/8 - 16	1.500	100
AFP30200A	1.181	3/8 - 16	2.000	100
AFP30210A	1.181	3/8 - 16	2.750	100
AFP30220A	1.181	3/8 - 16	4.000	100
AFP38100A	1.500	5/16 - 18	1.000	100
AFP38120A	1.500	5/16 - 18	1.500	100
AFP38130A	1.500	5/16 - 18	2.000	100
AFP38140A	1.500	5/16 - 18	2.750	100
AFP38150A	1.500	5/16 - 18	3.000	100
AFP38160A	1.500	5/16 - 18	4.000	100
AFP38170A	1.500	3/8 - 16	1.000	100
AFP38180A	1.500	3/8 - 16	1.500	100
AFP38200A	1.500	3/8 - 16	2.000	100
AFP38210A	1.500	3/8 - 16	2.750	100
AFP38220A	1.500	3/8 - 16	3.000	100
AFP38230A	1.500	3/8 - 16	4.000	100
AFP38240A	1.500	1/2 - 13	1.000	100
AFP38250A	1.500	1/2 - 13	1.500	100
AFP38260A	1.500	1/2 - 13	2.000	100
AFP38280A	1.500	1/2 - 13	2.750	100
AFP38290A	1.500	1/2 - 13	4.000	100
AFP48100A	1.890	5/16 - 18	1.000	100
AFP48110A	1.890	5/16 - 18	1.500	100
AFP48130A	1.890	5/16 - 18	2.000	100
AFP48140A	1.890	5/16 - 18	2.750	100
AFP48150A	1.890	5/16 - 18	4.000	100
AFP48170A	1.890	3/8 - 16	1.000	100
AFP48180A	1.890	3/8 - 16	1.500	100
AFP48200A	1.890	3/8 - 16	2.000	100
AFP48210A	1.890	3/8 - 16	2.375	100
AFP48220A	1.890	3/8 - 16	2.750	100
AFP48240A	1.890	3/8 - 16	4.000	100
AFP48250A	1.890	1/2 - 13	1.000	100
AFP48260A	1.890	1/2 - 13	1.500	100
AFP48270A	1.890	1/2 - 13	2.000	100
AFP48280A	1.890	1/2 - 13	2.750	100
AFP48290A	1.890	1/2 - 13	4.000	100

### Metric

Item No.	D (Base)		Stud Length	Bulk Pack Qty.
	mm	Thread Size		
466212	25	M6	20	500
466167	25	M8	25	500
466168	25	M8	40	350
466169	25	M8	55	250
466170	25	M8	70	200
466171	25	M8	100	150
466172	30	M6	25	400
466173	30	M6	40	300
466174	30	M6	55	200
466175	30	M6	70	150
466176	30	M6	100	100
466177	30	M10	25	300
466178	30	M10	40	200
466179	30	M10	55	100
466180	30	M10	70	100
466181	30	M10	100	50
466182	38	M8	25	400
466183	38	M8	40	300
466184	38	M8	55	200
466185	38	M8	70	150
466186	38	M8	100	100
466187	38	M10	25	300
466188	38	M10	40	200
466189	38	M10	55	100
466190	38	M10	70	100
466191	38	M10	100	50
466192	38	M12	25	200
466193	38	M12	40	150
466194	38	M12	55	150
466195	38	M12	70	50
466196	38	M12	100	100
466197	48	M8	25	200
466198	48	M8	40	150
466199	48	M8	55	150
466200	48	M8	70	100
466201	48	M8	100	100
466202	48	M10	25	150
466203	48	M10	40	100
466204	48	M10	55	100
466205	48	M10	70	50
466206	48	M10	100	100
466207	48	M12	25	100
466208	48	M12	40	100
466209	48	M12	55	100
466211	48	M12	100	50

# PLASTIC BASED LEVELERS



## AFM & AFMP Series Swivel/Tilting Adjustable Machinery Feet

**Specifications:**

- Material: Nylon Base (AFM) or Rubber (AFMP) with Zinc Plated Steel Stud
- Color: Black

**Features:**

- Ideal for mounting machines or conveyers
- High Load bearing of 2000lbs (900kg) per foot
- Tilting and swiveling design (20° Max)



**AFM Series**

Item No.			Stud Length	Ø Base	Bulk Pack Qty.
Plain Base	Bolt-Down Base	Thread	in	in	
AFM1100A	—	5/16 - 18	2.5	1.57	40
AFM1200A	—	5/16 - 18	2.5	1.97	40
—	AFM1300B	5/16 - 18	2.5	2.36	40
AFM1400A	—	5/16 - 18	3.5	1.57	40
AFM1500A	—	5/16 - 18	3.5	1.97	40
—	AFM1600B	5/16 - 18	3.5	2.36	40
AFM2050A	—	3/8 - 16	3.0	1.97	40
—	AFM2100B	3/8 - 16	3.0	2.36	40
AFM2150A	—	3/8 - 16	3.0	3.15	40
AFM2200A	—	3/8 - 16	4.0	1.97	40
—	AFM2250B	3/8 - 16	4.0	2.36	40
AFM2300A	—	3/8 - 16	4.0	3.15	40
AFM3100A	—	1/2 - 13	3.0	1.97	24
—	AFM3150B	1/2 - 13	3.0	2.36	24
AFM3200A	AFM3200B	1/2 - 13	3.0	3.15	24
AFM3300A	—	1/2 - 13	4.0	1.97	24
AFM3400A	AFM3400B	1/2 - 13	4.0	3.15	24
—	AFM3450B	1/2 - 13	4.0	3.94	24
AFM3500A	—	1/2 - 13	5.0	2.36	24
AFM3600A	AFM3600B	1/2 - 13	5.0	3.15	24
—	AFM3700B	1/2 - 13	5.0	3.94	24
AFM4100A	—	5/8 - 11	3.0	1.97	20
—	AFM4150B	5/8 - 11	3.0	2.36	20
AFM4200A	—	5/8 - 11	3.0	3.15	20
AFM4250A	—	5/8 - 11	4.0	1.97	20
AFM4300A	AFM4300B	5/8 - 11	4.0	3.15	20
—	AFM4400B	5/8 - 11	4.0	3.94	20
AFM4450A	—	5/8 - 11	6.0	3.15	20
AFM4500A	AFM4500B	5/8 - 11	6.0	3.94	20
AFM4600A	—	5/8 - 11	6.0	4.72	20
AFM4650A	—	5/8 - 11	8.0	3.15	20
AFM4700A	—	5/8 - 11	8.0	3.94	20
AFM4800A	AFM4800B	5/8 - 11	8.0	4.72	20
AFM5400A	—	3/4 - 10	6.0	3.15	20
AFM5450A	—	3/4 - 10	6.0	3.94	20
AFM5500A	AFM5500B	3/4 - 10	6.0	4.72	12
AFM5600A	—	3/4 - 10	8.0	3.15	12
AFM5650A	—	3/4 - 10	8.0	3.94	12
AFM5700A	AFM5700B	3/4 - 10	8.0	4.72	12

**AFMP Series - Optional Non-Slip Pad**

Item No.		Ø Base	Bulk Pack Qty.
Plain Base	Bolt-Down Base	in	
AFMP040A	—	1.57	40
AFMP050A	—	1.97	40
AFMP060A	AFMP060B	2.36	24
AFMP080A	AFMP080B	3.15	20
AFMP100A	AFMP100B	3.94	20
AFMP120A	AFMP120B	4.72	12



# METRIC SIZES ALSO AVAILABLE

Shop metric options for leveling feet & glides at [www.essentracomponents.com](http://www.essentracomponents.com)



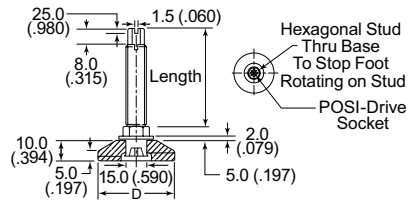
# PLASTIC BASED LEVELERS

## AFS & AFSM Series Rigid Adjustable Feet



**Specifications:**

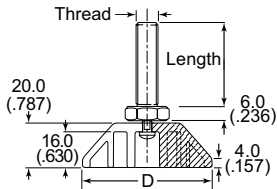
- Material: Polypropylene, Low-Carbon Steel Stud with Zinc-Plated Finish
- Color: Black



**Imperial**

Item No.	D (Base)		Stud Length	Bulk Pack Qty.
	in	Thread Size		
AFS48410A	1.890	5/16-18	1.000	100
AFS48420A	1.890	5/16-18	1.500	100
AFS48430A	1.890	5/16-18	2.000	100
AFS48440A	1.890	5/16-18	2.750	100
AFS48450A	1.890	5/16-18	4.000	100
AFS48460A	1.890	3/8-16	1.000	100
AFS48470A	1.890	3/8-16	1.500	100
AFS48480A	1.890	3/8-16	2.000	100
AFS48490A	1.890	3/8-16	2.750	100
AFS48500A	1.890	3/8-16	4.000	100
AFS48510A	1.890	1/2-13	1.000	100
AFS48520A	1.890	1/2-13	1.500	100
AFS48530A	1.890	1/2-13	2.000	100
AFS48540A	1.890	1/2-13	2.750	100
AFS48550A	1.890	1/2-13	4.000	100

## AFT & AFTM Series Swivel/Tilting Adjustable Feet



**Specifications:**

- Material: Polypropylene Zinc-Plated Steel Tilt Ball and Stud
- Color: Black

**Features:**

- Max 25° tilt



**Imperial**

Item No.	D (Base)		Thread Size	Stud Length	Bulk Pack Qty.
	in				
AFT25100A	0.984	1/4 - 20	1.000	100	
AFT25110A	0.984	5/16 - 18	0.500	100	
AFT25120A	0.984	5/16 - 18	1.000	100	
AFT25130A	0.984	3/8 - 16	0.500	100	
AFT25140A	0.984	3/8 - 16	1.500	100	
AFT25150A	0.984	3/8 - 16	2.000	100	
AFT32160A	1.260	1/4 - 20	1.000	100	
AFT32170A	1.260	5/16 - 18	1.000	100	
AFT32180A	1.260	5/16 - 18	1.500	100	
AFT32190A	1.260	3/8 - 16	1.000	100	
AFT32200A	1.260	3/8 - 16	2.000	100	
AFT32210A	1.260	3/8 - 16	3.000	100	
AFT38220A	1.496	5/16 - 18	1.000	100	
AFT38230A	1.496	5/16 - 18	1.500	100	
AFT38240A	1.496	3/8 - 16	1.000	100	
AFT38250A	1.496	3/8 - 16	2.000	100	
AFT38260A	1.496	3/8 - 16	3.000	100	
AFT47270A	1.850	5/16 - 18	1.000	100	
AFT47280A	1.850	5/16 - 18	2.000	100	
AFT47290A	1.850	3/8 - 16	1.000	100	
AFT47300A	1.850	3/8 - 16	2.000	100	
AFT47310A	1.850	3/8 - 16	3.000	100	

**AFSM Metric**

Item No.	D (Base)		Stud Length	Bulk Pack Qty.
	mm	Thread Size		
466121	25	M6	20	500
466122	25	M8	25	500
466123	25	M8	40	350
466124	25	M8	55	250
466125	25	M8	70	200
466126	25	M8	100	150
466127	30	M8	25	400
466128	30	M8	40	300
466129	30	M8	55	200
466130	30	M8	70	150
466131	30	M8	100	100
466132	30	M10	25	300
466133	30	M10	40	200
466134	30	M10	55	100
466135	30	M10	70	100
466136	30	M10	100	50
466137	38	M8	25	400
466138	38	M8	40	300
466139	38	M8	55	200
466140	38	M8	70	150
466141	38	M8	100	100
466142	38	M10	25	300
466143	38	M10	40	200
466144	38	M10	55	100
466145	38	M10	70	100
466146	38	M10	100	50
466147	38	M12	25	200
466148	38	M12	40	150
466149	38	M12	55	150
466150	38	M12	70	100
466151	38	M12	100	50
466152	48	M8	25	200
466153	48	M8	40	200
466154	48	M8	55	150
466155	48	M8	70	150
466156	48	M8	100	100
466157	48	M10	25	200
466158	48	M10	40	150
466159	48	M10	55	100
466160	48	M10	70	100
466161	48	M10	100	50
466162	48	M12	25	150
466163	48	M12	40	100
466164	48	M12	55	100
466165	48	M12	70	50
466166	48	M12	100	50

**Metric**

Item No.	Thread	Ø Base	Stud Length	Bulk Pack Qty.
462184	M6	32.5	25.0	500
110728	M8	25.0	12.0	100
110732	M8	25.0	25.0	100
110729	M8	32.0	12.0	100
110733	M8	32.0	25.0	100
110730	M8	38.0	12.0	100
110734	M8	38.0	25.0	100
110731	M8	47.5	12.0	100
110735	M8	47.5	25.0	100
110736	M10	25.0	15.0	100
110740	M10	25.0	38.0	100
110744	M10	25.0	50.0	100
110737	M10	32.0	15.0	100
110741	M10	32.0	38.0	100
110745	M10	32.0	50.0	100
110738	M10	38.0	15.0	100
110742	M10	38.0	38.0	100
110746	M10	38.0	50.0	100
110739	M10	47.5	15.0	100
110743	M10	47.5	38.0	100
110747	M10	47.5	50.0	100



# ADJUSTABLE FEET



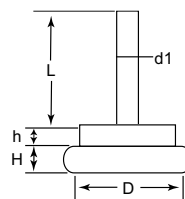
## AFH Series Steel Based Adjustable Feet

**Specifications:**

- Material: Low-Carbon Steel Stud with Zinc-Plated Finish and Nickel-Plated Shell

**Features:**

- Economic leveler ideal for uneven surfaces
- Steel shell base provides a smooth non-skid surface
- Excellent for leveling cabinets, office furniture and light-duty machines
- Polymer cushion provided shock absorption
- Attractive chrome finish



Item No.	D (Base)		H (Height)		L		d1 (Thread)	Bulk Pack Qty.
	in	mm	in	mm	in	mm		
AFH1010A	0.748	19.00	0.236	5.94	0.157	3.99	1/4 - 20	400
AFH1015A	0.748	19.00	0.236	5.94	0.157	25.40	1/4 - 20	360
AFH1020A	0.866	21.99	0.236	5.94	0.157	3.99	1/4 - 20	320
AFH1025A	0.866	21.99	0.236	5.94	0.157	15.24	1/4 - 20	300
AFH1030A	0.945	24.00	0.236	5.94	0.157	3.99	1/4 - 20	240
AFH1035A	0.945	24.00	0.236	5.94	0.157	15.24	1/4 - 20	220
AFH1040A	1.063	27.00	0.236	5.94	0.157	3.99	1/4 - 20	192
AFH1045A	1.063	27.00	0.236	5.94	0.157	25.40	1/4 - 20	172

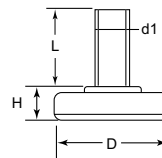
## AFB Series Nylon Based Adjustable Feet

**Specifications:**

- Material: Nylon Base, Low-Carbon Steel Stud with Zinc-Plated Finish and Nickel-Plated Shell
- Color: Natural Nylon Base with Nickel-Plated Shell

**Features:**

- Economic leveler ideal for uneven surfaces
- Nylon base provides a smooth non-abrasive surface
- Excellent for leveling cabinets, office furniture and light-duty machines



Item No.	D (Base)		H (Height)		L		d1 (Thread)	Bulk Pack Qty.
	in	mm	in	mm	in	mm		
AFB1010A	1.000	25.40	0.438	11.11	1.000	25.40	1/4 - 20	400
AFB1015A	1.000	25.40	0.438	11.11	2.000	50.80	1/4 - 20	360
AFB1020A	1.375	34.93	0.594	15.08	1.000	25.40	3/8 - 16	200
AFB1025A	1.375	34.93	0.594	15.08	2.000	50.80	3/8 - 16	180

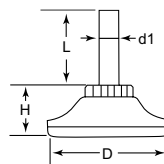
## AFD Series Nylon Based With Hex Adjustable Feet

**Specifications:**

- Material: Nylon Base, Low-Carbon Steel Stud with Zinc-Plated Finish and Nickel-Plated Shell
- Color: Natural Nylon Base with Nickel-Plated Shell

**Features:**

- Integral hexagonal nut allows adjustment under load
- Nylon base provides a smooth non-abrasive surface
- Excellent for leveling cabinets, office furniture and light-duty machines
- Attractive nickel finish



Item No.	D (Base)		H (Height)		L		d1 (Thread)	Bulk Pack Qty.
	in	mm	in	mm	in	mm		
AFD1010A	1.300	33.02	0.625	15.88	1.000	25.40	3/8 - 16	300
AFD1020A	1.750	44.45	0.688	17.46	1.000	25.40	3/8 - 16	300
AFD1025A	1.750	44.45	0.688	17.46	2.000	50.80	3/8 - 16	280

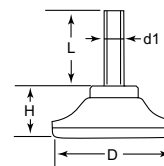
## AFR Series Nylon Based Adjustable Feet

**Specifications:**

- Material: Nylon Base, Low-Carbon Steel Stud With Zinc-Plated Finish and Nickel-Plated Shell
- Color: Natural Nylon Base with Nickel-Plated Shell

**Features:**

- Economic leveler ideal for uneven surfaces
- Nylon base provides a smooth non-abrasive surface
- Excellent for leveling cabinets, office furniture and light-duty machines



Item No.	D (Base)		H (Height)		L		d1 (Thread)	Bulk Pack Qty.
	in	mm	in	mm	in	mm		
AFR1010A	1.125	28.58	0.438	11.11	1.000	25.40	1/4 - 20	400
AFR1015A	1.125	28.58	0.438	11.11	2.000	50.80	1/4 - 20	360
AFR1020A	1.125	28.58	0.438	11.11	1.000	25.40	5/16 - 18	300
AFR1025A	1.125	28.58	0.438	11.11	2.000	50.80	5/16 - 18	280

Item No.	D (Base)		H (Height)		L		d1 (Thread)	Bulk Pack Qty.
	in	mm	in	mm	in	mm		
AFR1030A	1.300	33.02	0.500	12.70	1.000	25.40	3/8 - 16	240
AFR1035A	1.300	33.02	0.500	12.70	2.000	50.80	3/8 - 16	220
AFR1040A	1.750	44.45	0.531	13.49	1.000	25.40	3/8 - 16	200
AFR1045A	1.750	44.45	0.531	13.49	2.000	50.80	3/8 - 16	180



## BASE CAPS / RIVET FEET

### MBC Series Glide Base Caps



**Specifications:**

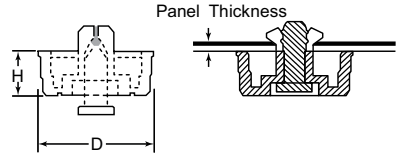
- Material: See Table
- Color: Natural

**Features:**

- Low profile
- Effectively encapsulates standard metal base glides

Item No.	Fits Base Cap OD		Material	Bulk Pack Qty.
	in	mm		
MBC1200A	0.875	22.2	Nylon	5000
MBC1210A	1.000	25.4	LDPE	4000
MBC1220A	1.062	27.0	Nylon	4000
MBC1230A	1.200	30.5	LDPE	3000
MBC1240A	1.218	31.0	Nylon	3000
MBC1250A	1.250	31.8	LDPE	2500
MBC1260A	1.250	31.8	Nylon	2500

### FF Series Fast Foot



**Specifications:**

- Material: TPR over Nylon
- Flame Class: UL94 HB
- Color: Black

Item No.	Ø		Panel Thickness		D		H		Bulk Pack Qty.
	in	mm	in	mm	in	mm	in	mm	
FF-001B	0.199	5.1	0.039 - 0.091	1.0 - 2.3	0.950	24.0	0.551	14.0	100
FF-003-P3X5.5B	0.124	3.2	0.031 - 0.071	0.8 - 1.8	0.560	14.2	0.217	5.5	100
FF-004B	0.199	5.1	0.039 - 0.091	1.0 - 2.3	0.790	20.0	0.394	10.0	100
FF-005-P4X5B	0.163	4.2	0.039 - 0.091	0.8 - 1.8	0.830	21.0	0.165	4.2	100
FF-005-P4X6B	0.163	4.2	0.071 - 0.111	1.8 - 2.8	0.830	21.0	0.165	4.2	100
FF-005-P4X7B	0.163	4.2	0.114 - 0.146	2.9 - 3.7	0.830	21.0	0.165	4.2	100
FF-005-P4X8B	0.163	4.2	0.150 - 0.189	3.8 - 4.8	0.830	21.0	0.165	4.2	100
FF-006-P4X6B	0.163	4.2	0.024 - 0.039	0.6 - 1.0	0.590	15.0	0.236	6.0	100
FF-006-P4X7B	0.163	4.2	0.039 - 0.079	1.0 - 2.0	0.590	15.0	0.236	6.0	100
FF-006-P4X8B	0.163	4.2	0.079 - 0.118	2.0 - 3.1	0.590	15.0	0.236	6.0	100
FF-006-P5X6.5B	0.203	5.2	0.031 - 0.047	0.8 - 1.2	0.590	15.0	0.236	6.0	100
FF-006-P5X7.5B	0.203	5.2	0.051 - 0.091	1.3 - 2.3	0.590	15.0	0.236	6.0	100
FF-008-P4X6B	0.163	4.2	0.031 - 0.071	0.8 - 1.8	0.830	21.0	0.236	6.0	100
FF-008-P4X7B	0.163	4.2	0.075 - 0.110	1.9 - 2.8	0.830	21.0	0.236	6.0	100
FF-008-P4X8B	0.163	4.2	0.114 - 0.157	2.9 - 4.0	0.830	21.0	0.236	6.0	100
FF-009-P4X6B	0.163	4.2	0.000 - 0.031	0.0 - 0.8	0.830	21.0	0.315	8.0	100
FF-009-P4X7B	0.163	4.2	0.031 - 0.079	0.8 - 2.0	0.830	21.0	0.315	8.0	100
FF-009-P4X8B	0.163	4.2	0.083 - 0.118	2.1 - 3.0	0.830	21.0	0.315	8.0	100
FF-010-P4X7B	0.163	4.2	0.039 - 0.079	1.0 - 2.0	0.590	15.0	0.354	9.0	100
FF-010-P4X8B	0.163	4.2	0.079 - 0.118	2.0 - 3.1	0.590	15.0	0.354	9.0	100
FF-13-P3.5X4.5B	0.144	3.7	0.020 - 0.047	0.5 - 1.2	0.430	10.8	0.157	4.0	100
FF-13-P3.5X5.5B	0.144	3.7	0.047 - 0.079	1.2 - 2.0	0.430	10.8	0.157	4.0	100
FF-13-P3.5X6.0B	0.144	3.7	0.059 - 0.087	1.5 - 2.2	0.430	10.8	0.157	4.0	100
FF-13-P3.5X7.0B	0.144	3.7	0.098 - 0.126	2.5 - 3.2	0.430	10.8	0.157	4.0	100

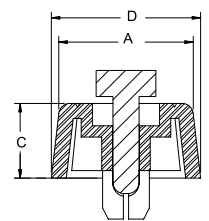
### SFF Series Soft Fast Foot

**Specifications:**

- Material: Foot: UL94 HB TPE, 86 Shore A
- Pin: Polypropylene
- Color: Black

**Features:**

- Rivet is pushed in, locking foot in place
- Prevents surface damage with anti-skid and scratch resistant properties
- Made of abrasion resistant rubber to help cushion and provide vibration control
- High shear strength



Item No.	Hole Ø		Panel Thickness		A Ref		C Ref		D		Bulk Pack Qty.
	in	mm	in	mm	in	mm	in	mm	in	mm	
SFF-018	0.305	7.75	0.031 - 0.059	0.8 - 1.5	0.710	18.0	0.390	10.0	0.790	20.0	100
SFF-021	0.305	7.75	0.197 - 0.315	5.0 - 8.0	0.790	20.0	0.240	6.0	0.830	21.0	100
SFF-023	0.305	7.75	0.031 - 0.059	0.8 - 1.5	0.910	23.0	0.200	5.0	0.980	25.0	100
SFF-028	0.305	7.75	0.031 - 0.059	0.8 - 1.5	0.710	18.0	0.590	15.0	0.790	20.0	100

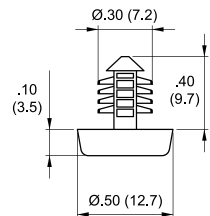
### FBR Series Foot, Fir-Tree Mount

**Specifications:**

- Material: Rivet: UL94 V-2 Nylon 6/6
- Foot: TPE
- Color: Black

**Features:**

- Rigid nylon fir-tree mount provides exceptional retention strength
- Rubber foot provides skid resistance and vibration control



Item No.	Hole Ø		Min. Panel Thickness		Bulk Pack Qty.
	in	mm	in	mm	
FBR-1	0.268	6.8	0.394	10.0	1000