



Chipsmall Limited consists of a professional team with an average of over 10 year of expertise in the distribution of electronic components. Based in Hongkong, we have already established firm and mutual-benefit business relationships with customers from,Europe,America and south Asia,supplying obsolete and hard-to-find components to meet their specific needs.

With the principle of “Quality Parts,Customers Priority,Honest Operation,and Considerate Service”,our business mainly focus on the distribution of electronic components. Line cards we deal with include Microchip,ALPS,ROHM,Xilinx,Pulse,ON,Everlight and Freescale. Main products comprise IC,Modules,Potentiometer,IC Socket,Relay,Connector.Our parts cover such applications as commercial,industrial, and automotives areas.

We are looking forward to setting up business relationship with you and hope to provide you with the best service and solution. Let us make a better world for our industry!



Contact us

Tel: +86-755-8981 8866 Fax: +86-755-8427 6832

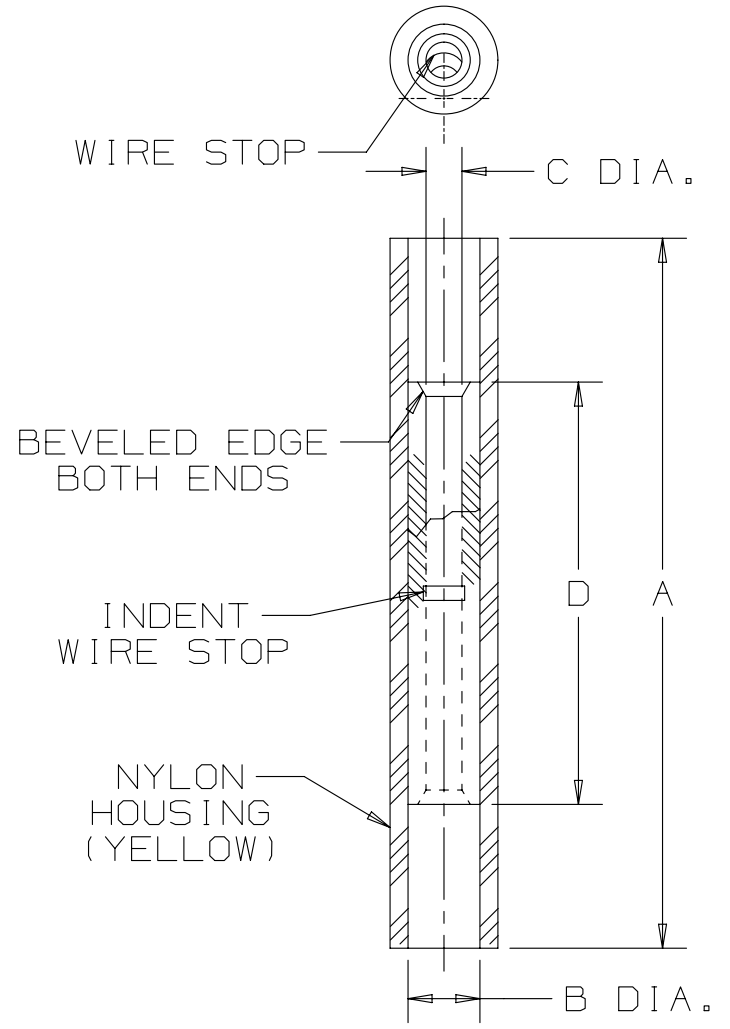
Email & Skype: info@chipsmall.com Web: www.chipsmall.com

Address: A1208, Overseas Decoration Building, #122 Zhenhua RD., Futian, Shenzhen, China



THIS COPY IS PROVIDED ON A RESTRICTED BASIS AND IS NOT TO BE USED IN ANY WAY DETRIMENTAL TO THE INTERESTS OF PANDUIT CORP.

PANDUIT PART NUMBER	WIRE SIZE	DIMENSIONS in.			
		$\pm .03$ A	$\pm .01$ B DIA.	$\pm .01$ C DIA.	$\pm .03$ D
BSN22	26-22	.79 (20.1)	.08 (2.0)	.04 (1.0)	.47 (1.2)



NOTES:

- USED FOR:
A. #26-22 AWG SOLID OR STRANDED COPPER WIRE
B. 221°F [105°C] MAX. TEMP. RATING
- INSTALLATION TOOLS: CT-520, CT-1525, CT-2500
- WIRE STRIP LENGTH: 1/4 $\pm \frac{1}{32}$ [6,4 $\pm \frac{1}{16}$]
- MATERIAL:
A. STAMPING: .02" [0,5] THK COPPER, TIN PLATED
B. HOUSING: NYLON, YELLOW
- SEE www.panduit.com FOR PACKAGE QUANTITIES INDICATED BY PART NUMBER SUFFIX
- DIMENSIONS IN BRACKETS ARE METRIC EQUIVALENT.

REV	DATE	BY	CHK	APR	DESCRIPTION	ECN
07	04-25-13	JBN	RTFI	RTFI	UPDATED DRAWING BORDER & TITLE BLOCK	A41337

TITLE BARREL NYLON INSULATED BUTT SPLICE #26-22 CUSTOMER DRAWING			
ITEM REVISION NAME N41337BA/07		PANDUIT	
DATASET FILE NAME N41337BA_DC/07A			
UNLESS OTHERWISE SPECIFIED, DIMENSIONAL TOLERANCES ARE: IN [mm]		MATERIAL: SEE NOTES	
.x \pm .1 [2.54] .xxx \pm .005 [0.127] .xx \pm .01 [0.25] ANGLES \pm 5°		DRAWING NUMBER: A41337	
DRAWN BY DAW		DATE -	SCALE NONE
SHT 1 OF 1		SIZE A	

D10100DA/15