



Chipsmall Limited consists of a professional team with an average of over 10 year of expertise in the distribution of electronic components. Based in Hongkong, we have already established firm and mutual-benefit business relationships with customers from,Europe,America and south Asia,supplying obsolete and hard-to-find components to meet their specific needs.

With the principle of “Quality Parts,Customers Priority,Honest Operation,and Considerate Service”,our business mainly focus on the distribution of electronic components. Line cards we deal with include Microchip,ALPS,ROHM,Xilinx,Pulse,ON,Everlight and Freescale. Main products comprise IC,Modules,Potentiometer,IC Socket,Relay,Connector.Our parts cover such applications as commercial,industrial, and automotives areas.

We are looking forward to setting up business relationship with you and hope to provide you with the best service and solution. Let us make a better world for our industry!



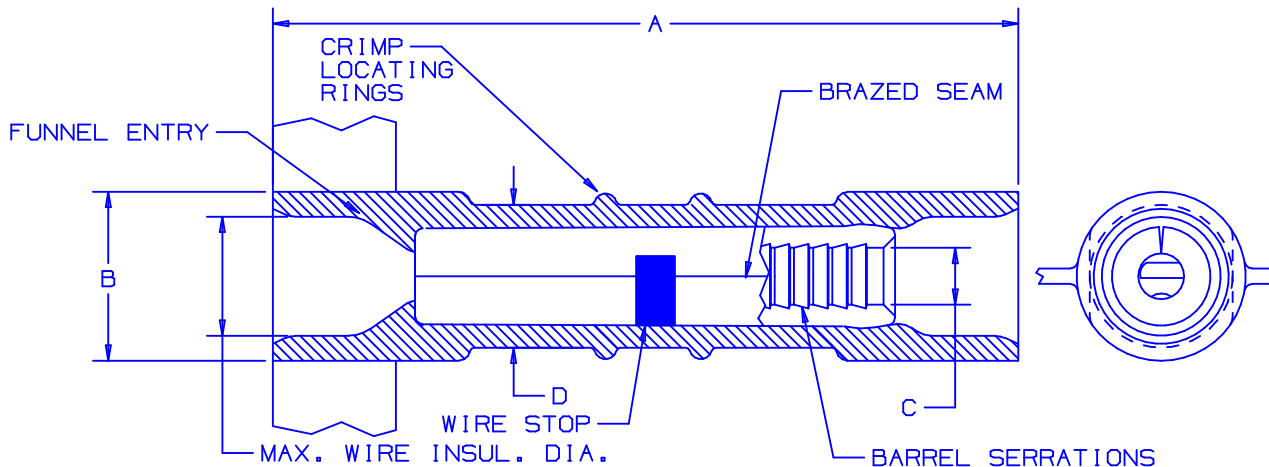
Contact us

Tel: +86-755-8981 8866 Fax: +86-755-8427 6832

Email & Skype: info@chipsmall.com Web: www.chipsmall.com

Address: A1208, Overseas Decoration Building, #122 Zhenhua RD., Futian, Shenzhen, China





NOTES:

1. 600V MAX VOLTAGE RATING
2. MAXIMUM TEMPERATURE RATING:
BSN SERIES=257°F (125°C)
BSP SERIES=221°F (105°C)
3. SOLID OR STRANDED COPPER WIRE
4. PACKAGE QTY:3K=3000 PCS.
2K=2000 PCS.
5. CONTINUOUS MOLDED STRIP CARRIER
6. MATERIAL:
A. HOUSING-NYLON
B. STAMPING-
CDA #110 COPPER, .032" THICK
7. CRIMP PRESS: CP-851,CP-860, CP-861 OR CP-862.
8. APPLICATOR: CA-800, CA9
9. WIRE STRIP LENGTH 5/16^{+1/32}₋₀ (7.9^{+0.8}₋₀)

PART NUMBER	WIRE RANGE AWG (mm ²)	COLOR CODE	MAX. WIRE INSUL. DIA.	MIN. WIRE INSUL. DIA.	DIMENSIONS				CA-800/CA9 APPLICATOR DIES (SEE NOTE #7)	HAND TOOLS
					A	B	C	D		

STANDARD NYLON

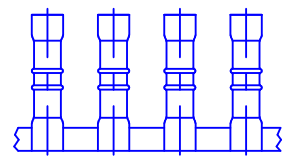
BSN18-3K	22-16 (.5-1.5)	RED	.15 (3.8)	N/A	.95 (24.1)	.22 (5.5)	.05 (1.3) MIN.	.18 (4.7)	CD-800-1 CD9-1A	CT-100,CT-500 CT-550,CT-600 CT-1550,CT-1551 CT-2400
BSN14-3K	18-14 (1.5-2.5)	BLUE	.17 (4.3)	N/A	.95 (24.1)	.24 (6.0)	.07 (1.9) MIN.	.21 (5.4)	CD-800-2 CD9-2A	
BSN10-2K	12-10 (4.0-6.0)	YELLOW	.23 (5.8)	N/A	.95 (24.1)	.32 (8.1)	.12 (3.0) MIN.	.29 (7.4)	CD-800-17 CD9-17B	CT-100,CT-550 CT-550,CT-1550 CT-1551,CT-2400



LISTED 587H E52164
CERTIFIED LR31212

PREMIUM GRADE NYLON

BSP18-3K	22-16 (.5-1.5)	RED	.15 (3.8)	.11 (2.8)	.96 (24.4)	.22 (5.5)	.05 (1.3) MIN.	.18 (4.7)	CD-800-1 CD9-1A	CT-100,CT-500 CT-550,CT-600 CT-1550,CT-1551 CT-2400
BSP14-3K	18-14 (1.5-2.5)	BLUE	.17 (4.3)	.13 (3.3)	.96 (24.4)	.24 (6.0)	.07 (1.9) MIN.	.21 (5.4)	CD-800-2 CD9-2A	



A41451_06

06	1/05	KLFU		ADDED CP-862, CA9 & CD9 DIES WHERE APPLICABLE				
05	3/98	TM	RS	ADDED BSN10-2K, UPDATED DIMENSIONS AND NOTES	06685	DH	LA	
04	10/96	TM	RS	UPDATED CHART	05145	DH	LA	
03	5/95	MS	RS	REVISED "A" DIMENSIONS	03224	KS	LA	
REV	DATE	BY	CHK	DESCRIPTION	ECN #	PM	CUST	



PANDUIT CORP. TINLEY PARK, ILLINOIS

CONTINUOUSLY MOLDED NYLON INSULATED TERMO™ BUTT SPLICES

DRAWN BY KRC	CHK'D	SCALE NONE	DRAWING NO./CAD FILENAME A41451
-----------------	-------	---------------	------------------------------------