



Chipsmall Limited consists of a professional team with an average of over 10 year of expertise in the distribution of electronic components. Based in Hongkong, we have already established firm and mutual-benefit business relationships with customers from,Europe,America and south Asia,supplying obsolete and hard-to-find components to meet their specific needs.

With the principle of “Quality Parts,Customers Priority,Honest Operation,and Considerate Service”,our business mainly focus on the distribution of electronic components. Line cards we deal with include Microchip,ALPS,ROHM,Xilinx,Pulse,ON,Everlight and Freescale. Main products comprise IC,Modules,Potentiometer,IC Socket,Relay,Connector.Our parts cover such applications as commercial,industrial, and automotives areas.

We are looking forward to setting up business relationship with you and hope to provide you with the best service and solution. Let us make a better world for our industry!



Contact us

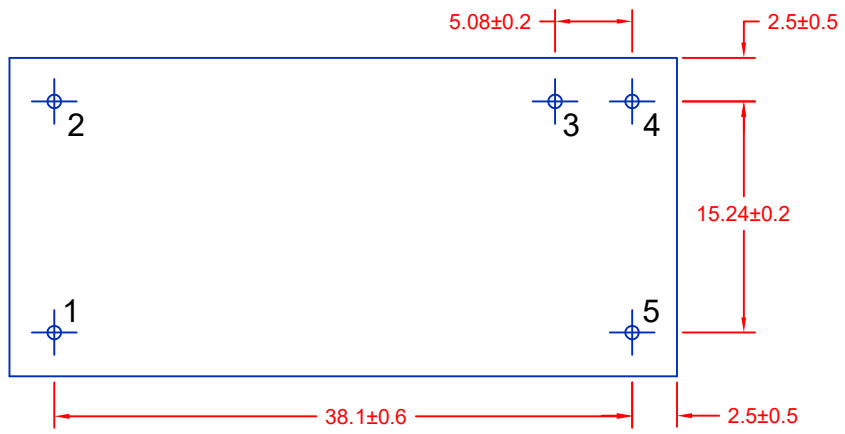
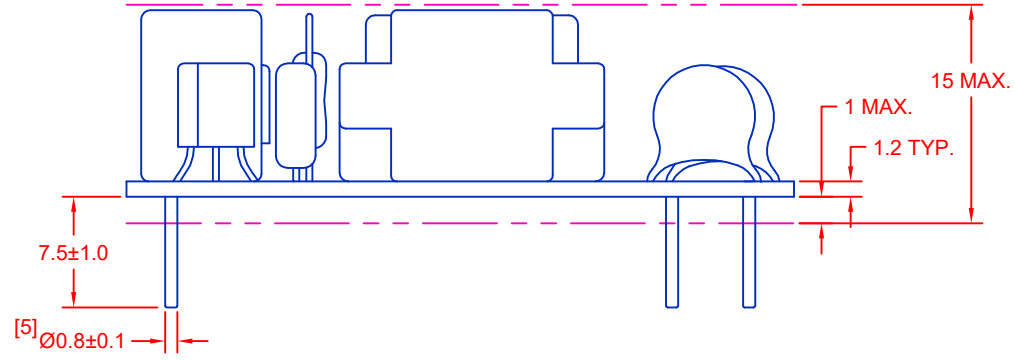
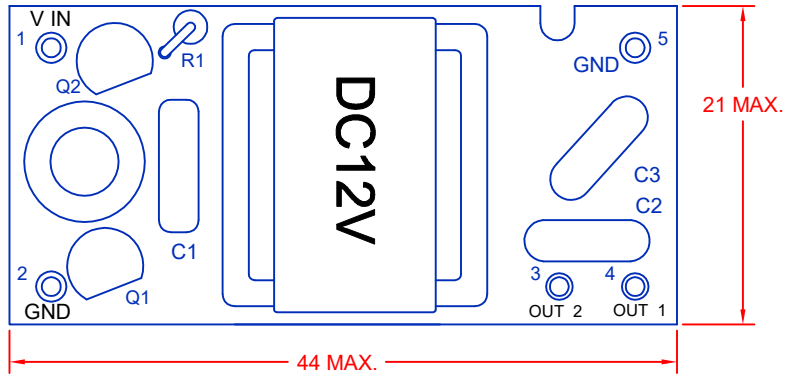
Tel: +86-755-8981 8866 Fax: +86-755-8427 6832

Email & Skype: info@chipsmall.com Web: www.chipsmall.com

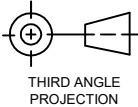
Address: A1208, Overseas Decoration Building, #122 Zhenhua RD., Futian, Shenzhen, China

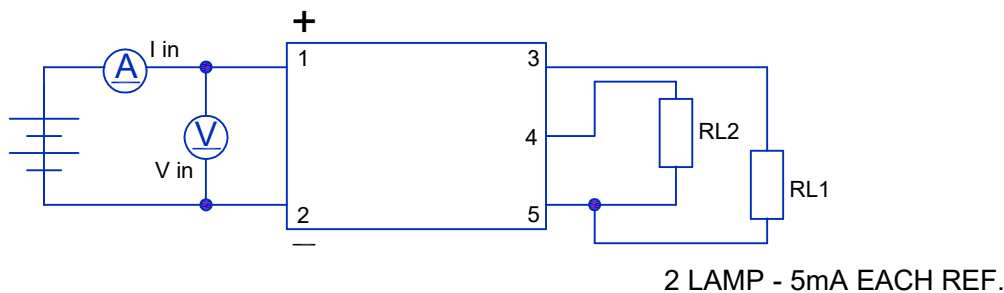
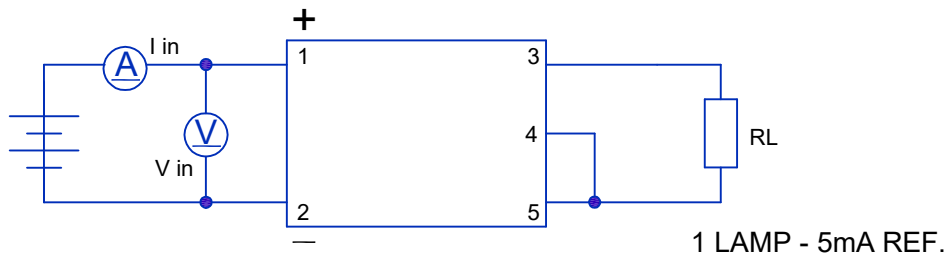
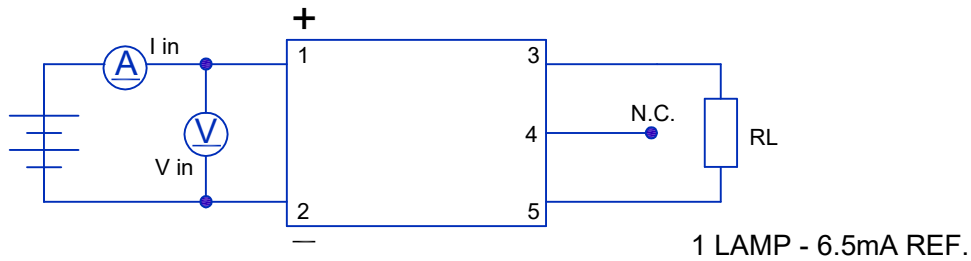
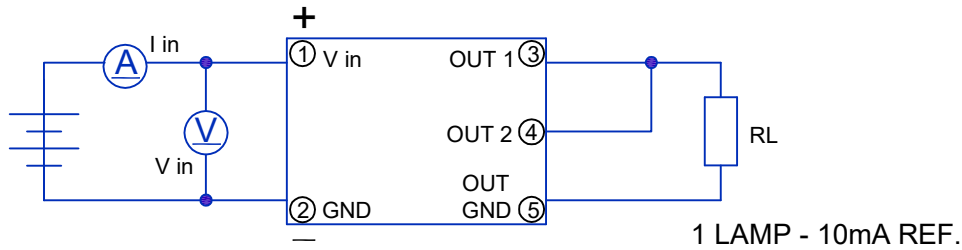


REV.	DESCRIPTION/ECO NO.	DATE
	RELEASED	3/10/03
A	DIM. CHANGE	3/27/03
B	RoHS COMPLIANCE	5/9/06
C	CHNG. COMPONENT LAYOUT	3/21/17
D	ADD BOARD DIMENSIONS	8/28/17



JKL PART NO.: BXA-12529
*RoHS COMPLIANCE

METRIC  THIRD ANGLE PROJECTION	DIMENSIONS ARE IN MILLIMETERS TOLERANCE UNLESS OTHERWISE SPECIFIED 1 PL +/- 0.3 2 PL +/- ANGLE +/- 0	JKL COMPONENTS CORPORATION TITLE 12 V DUAL CCFL POWER SUPPLY			
	DRAWN BY L. WENGSTROM	APPV'D BY L.R.	DATE 8/28/17	SIZE A	FSCM NO. 55335
- CAD DRAWING - MANUAL REVISIONS NOT PERMITTED			SCALE NONE	RELEASED DATE 3/10/03	REVISION DATE 8/28/17
				REV. NO. D	SHEET 1 OF 2



BOARD PIN #	INPUT
1	+V (V in)
2	V (GND)
3	OUT 1
4	OUT2
5	OUT (GND)

CHARACTERISTICS	MIN	TYP	MAX
INPUT VOLTAGE: (vdc)	10.8	12.0	13.2
INPUT CURRENT: (mA)	220	260	500
OUTPUT VOLTAGE: (Vrms)	950	1000	1050
OUTPUT CURRENT (mA) x 2	4.5	5.5	6.5
OUTPUT FREQUENCY: (kHz)	25	35	45
OPERATING TEMP: (CELSIUS)	0	25	50

METRIC THIRD ANGLE PROJECTION	DIMENSIONS ARE IN MILLIMETERS TOLERANCE UNLESS OTHERWISE SPECIFIED 1 PL +/- 0.3 2 PL +/- 0	JKL COMPONENTS CORPORATION			
	TITLE 12 V DUAL CCFL POWER SUPPLY				
DRAWN BY L. WENGSTROM	APP'VD BY L.R.	DATE 8/28/17	SIZE A	FSCM NO. 55335	DRAWING NO. BXA-12529
- CAD DRAWING - MANUAL REVISIONS NOT PERMITTED			SCALE NONE	RELEASED DATE 3/10/03	REVISION DATE 8/28/17
				REV. NO. D	SHEET NO. 2 OF 2