



Chipsmall Limited consists of a professional team with an average of over 10 year of expertise in the distribution of electronic components. Based in Hongkong, we have already established firm and mutual-benefit business relationships with customers from,Europe,America and south Asia,supplying obsolete and hard-to-find components to meet their specific needs.

With the principle of “Quality Parts,Customers Priority,Honest Operation,and Considerate Service”,our business mainly focus on the distribution of electronic components. Line cards we deal with include Microchip,ALPS,ROHM,Xilinx,Pulse,ON,Everlight and Freescale. Main products comprise IC,Modules,Potentiometer,IC Socket,Relay,Connector.Our parts cover such applications as commercial,industrial, and automotives areas.

We are looking forward to setting up business relationship with you and hope to provide you with the best service and solution. Let us make a better world for our industry!



Contact us

Tel: +86-755-8981 8866 Fax: +86-755-8427 6832

Email & Skype: info@chipsmall.com Web: www.chipsmall.com

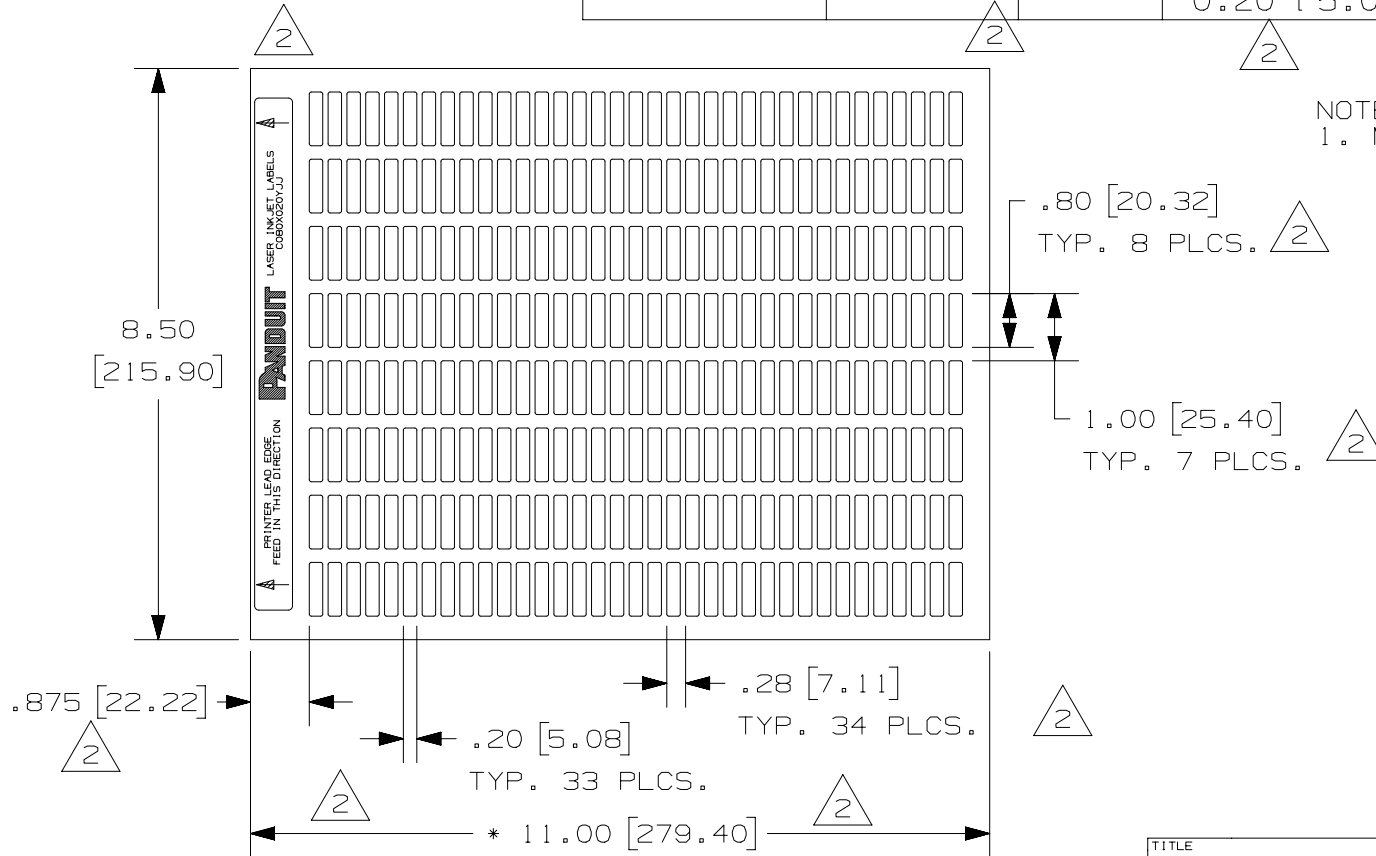
Address: A1208, Overseas Decoration Building, #122 Zhenhua RD., Futian, Shenzhen, China



THIS COPY IS PROVIDED ON A RESTRICTED BASIS AND IS NOT TO BE USED IN ANY WAY DETRIMENTAL TO THE INTERESTS OF PANDUIT CORP.

| PART NO. | MATERIAL | COLOR | MARKER SIZE inches [mm] | LABELS PER SHEET | SHEETS PER PKG. | STANDARD PKG. QTY. |
|-------------|----------|-------|--|------------------|-----------------|--------------------|
| C080X020YJJ | GM5 | WHITE | 0.80 [20.32] X X 0.20 [5.08] | 280 | 36 | 10000 |

NOTES:
1. MILLIMETERS ARE IN [].



| REV | DATE | BY | CHK | APR | DESCRIPTION | ECN |
|-----|---------|-----|------|------|--|------------|
| 2 | 3/8/16 | RVU | SEWH | JHAC | UPDATE ON PANDUIT LOGO. ADD .875. CHG. BORDER FROM B TO A. UPDATE TABLE AND TITLE. 2 PLCS. GMY5 WAS GMY. | GAECN03121 |
| 1 | 5/2/07 | RVU | DWY | | ADD "INKJET" ON HEADER. | 4971 |
| 0 | 9/29/04 | RVU | DWY | | DRAWING RELEASE. | 0000 |

| | | | | | |
|---|-----------------|----------------------|----------------|---------------------------|-------------------------------|
| TITLE C080X020YJJ LASER/INKJET LABELS CUSTOMER DRAWING | | | | | |
| ITEM REVISION NAME 100472DN/03 | | | PANDUIT | | |
| DATASET FILE NAME 100472DN_DC_C10244/03D | | | | | |
| UNLESS OTHERWISE SPECIFIED, DIMENSIONAL TOLERANCES ARE: IN [mm] | | | | | MATERIAL: SEE TABLE |
| .x ± .12 [3.05] | | .xxx ± .025 [.635] | | DRAWING NUMBER: C10244 | |
| .xx ± .062 [1.57] | | ANGLES ± | | THIRD ANGLE PROJECTION | |
| DRAWN BY RVU | DATE 9/29/04 | CHK JHAC | SCALE NTS | SHT 1 OF 1 | |
| | | | | | SIZE A |