



Chipsmall Limited consists of a professional team with an average of over 10 year of expertise in the distribution of electronic components. Based in Hongkong, we have already established firm and mutual-benefit business relationships with customers from,Europe,America and south Asia,supplying obsolete and hard-to-find components to meet their specific needs.

With the principle of “Quality Parts,Customers Priority,Honest Operation,and Considerate Service”,our business mainly focus on the distribution of electronic components. Line cards we deal with include Microchip,ALPS,ROHM,Xilinx,Pulse,ON,Everlight and Freescale. Main products comprise IC,Modules,Potentiometer,IC Socket,Relay,Connector.Our parts cover such applications as commercial,industrial, and automotives areas.

We are looking forward to setting up business relationship with you and hope to provide you with the best service and solution. Let us make a better world for our industry!



Contact us

Tel: +86-755-8981 8866 Fax: +86-755-8427 6832

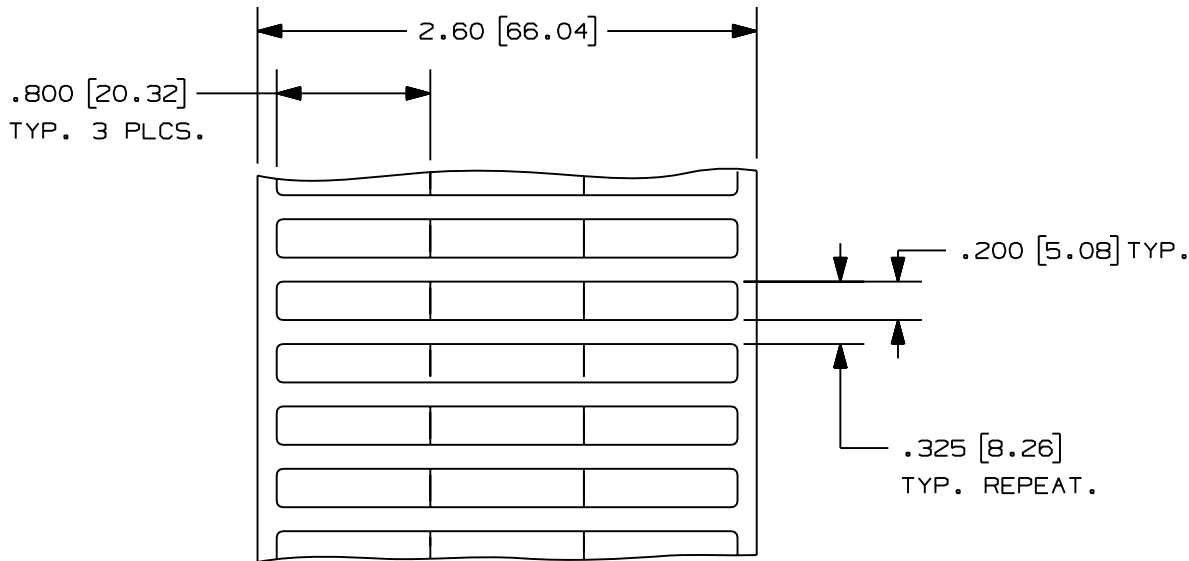
Email & Skype: info@chipsmall.com Web: www.chipsmall.com

Address: A1208, Overseas Decoration Building, #122 Zhenhua RD., Futian, Shenzhen, China



THIS COPY IS PROVIDED ON A RESTRICTED BASIS AND IS NOT TO BE USED IN ANY WAY DETRIMENTAL TO THE INTERESTS OF PANDUIT CORP.

PART NO.	MATERIAL	MARKER SIZE inches [mm]	LABELS PER ROW	STANDARD PKG. QTY.
CO80X020YJT	GMY2	0.800 X 0.200 (20.3) X (5.08)	3	10000
² CO80X020KBT	GMK4			
² CO80X020KCT				
CO80X020CBT	GMC			



NOTE:
1. SEE MFG. DWG. NO. A61227.
2. MILLIMETER ARE IN [].

CAD FILENAME/LAYERS
I00472HG_C10264_CO80X020xxT_01.PRT

PANDUIT CORP. TINLEY PARK, ILLINOIS

CUSTOMER DRAWING OPTIMUM
CO80X020YJT, CO80X020KBT
CO80X020KCT AND CO80X020CBT
THERMAL TRANSFER LABELS

UNLESS OTHERWISE SPECIFIED,
DIMENSIONAL TOLERANCES ARE:
(.X) ± .031 (.XXX) ± .010
(.XX) ± .015 ANGLES ±

UNLESS OTHERWISE SPECIFIED,
ALL DIMENSIONS ARE GIVEN
IN INCHES, THIRD ANGLE PROJECTION.

REV	DATE	BY	CHK	DESCRIPTION	ECN	R	CUST	SUP
2	4/13/07	RVU		ADDED P/N: CO80X020KCT. CO80X020KBT, MATERIAL SHOULD BE GMK4.	4948	R		
1	3-31-06	RVU		ADDED "CUSTOMER DRAWING" ON TITLE. .800 WAS .850. .325 WAS .375	4435	R		
0	9-30-04	RVU		DRAWING RELEASE.	0000	R		

DRAWN BY
RVU

DATE
9-30-04

CHK'D

MAT'L:
SEE TABLE

SCALE
NTS

DRAWING NO.
C10264

DWG
SIZE
A