



Chipsmall Limited consists of a professional team with an average of over 10 year of expertise in the distribution of electronic components. Based in Hongkong, we have already established firm and mutual-benefit business relationships with customers from,Europe,America and south Asia,supplying obsolete and hard-to-find components to meet their specific needs.

With the principle of “Quality Parts,Customers Priority,Honest Operation,and Considerate Service”,our business mainly focus on the distribution of electronic components. Line cards we deal with include Microchip,ALPS,ROHM,Xilinx,Pulse,ON,Everlight and Freescale. Main products comprise IC,Modules,Potentiometer,IC Socket,Relay,Connector.Our parts cover such applications as commercial,industrial, and automotives areas.

We are looking forward to setting up business relationship with you and hope to provide you with the best service and solution. Let us make a better world for our industry!



## Contact us

Tel: +86-755-8981 8866 Fax: +86-755-8427 6832

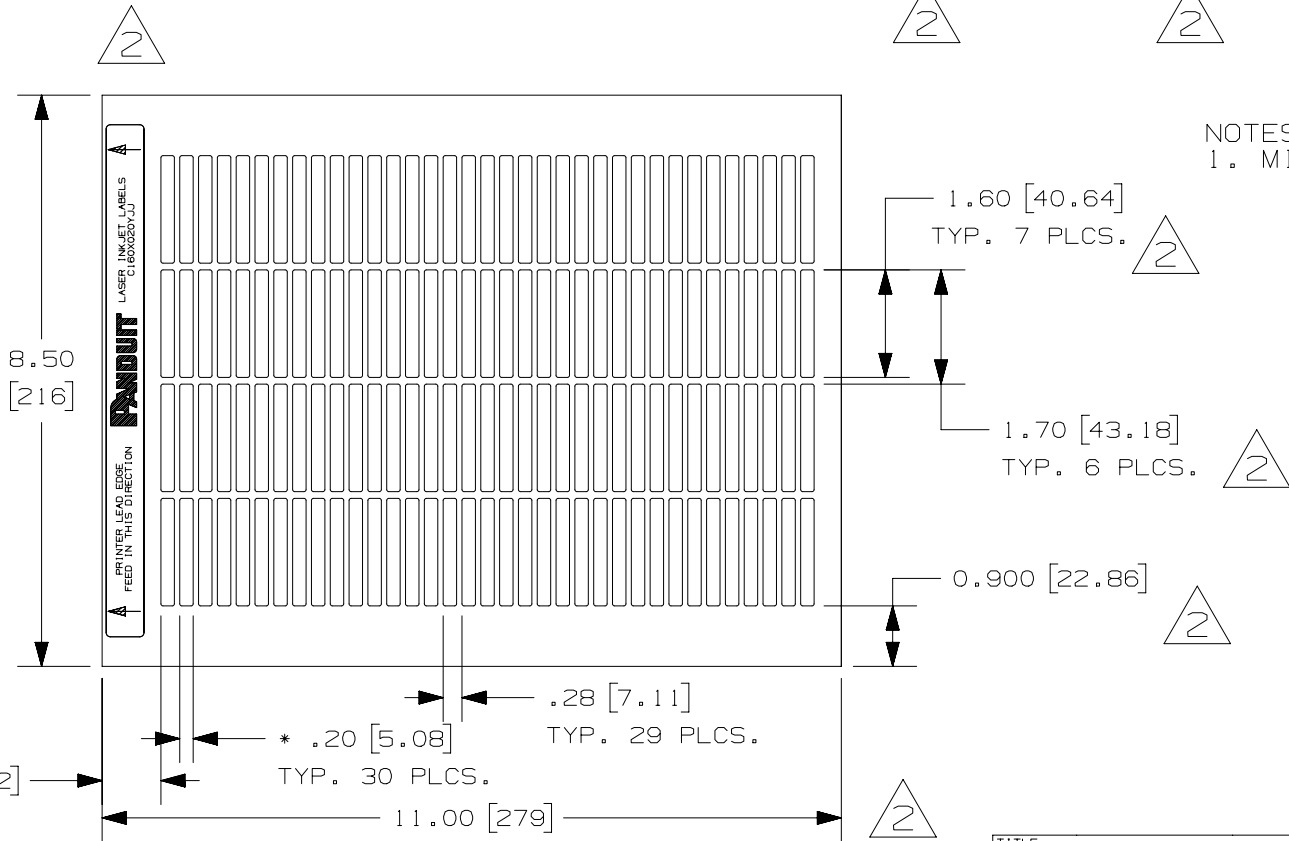
Email & Skype: info@chipsmall.com Web: www.chipsmall.com

Address: A1208, Overseas Decoration Building, #122 Zhenhua RD., Futian, Shenzhen, China



THIS COPY IS PROVIDED ON A RESTRICTED BASIS AND IS NOT TO BE USED IN ANY WAY DETRIMENTAL TO THE INTERESTS OF PANDUIT CORP.

PART NO.	MATERIAL	COLOR	MARKER SIZE inches [ mm ]	LABELS PER SHEET	SHEETS PER PKG.	STANDARD PKG. QTY.
C160X020YJJ	GM5	WHITE	1.60 [ 40.64 ] X 0.20 [ 5.08 ]	140	36	5000



NOTES:  
1. MILLIMETERS ARE IN [ ].

REV	DATE	BY	CHK	APR	DESCRIPTION	ECN
2	3/8/16	RVU	SEWH	JHAC	UPDATE ON PANDUIT LOGO. ADD .875". CHG. BORDER FROM B TO A. UPDATE TABLE AND TITLE. 2 PLCS. GMY5 WAS GMY54W-IJ.	GAECN03135
1	5/2/07	RVU	DWY		ADDED "INKJET" ON HEADER.	4971
0	9/30/04	RVU	DWY		RELEASED TO PRODUCTION.	3543

TITLE		C160X020YJJ OPTIMUM LASER/INKJET COMPONENT LABELS CUSTOMER DRAWING	
ITEM REVISION NAME		100472DR/03	
DATASET FILE NAME		100472DR_DC_C10248/03D	
UNLESS OTHERWISE SPECIFIED, DIMENSIONAL TOLERANCES ARE: IN [ mm ]		MATERIAL: <b>SEE TABLE</b>	
.x ± .12 [ 3.05 ] .xxx ± .025 [ .635 ] .xx ± .062 [ 1.57 ] ANGLES ±		DRAWING NUMBER: C10248	
THIRD ANGLE PROJECTION		DRAWN BY: RVU DATE: 9/30/04 CHK: JHAC SCALE: NTS	
SHT 1 OF 1		SIZE: A	