



Chipsmall Limited consists of a professional team with an average of over 10 year of expertise in the distribution of electronic components. Based in Hongkong, we have already established firm and mutual-benefit business relationships with customers from,Europe,America and south Asia,supplying obsolete and hard-to-find components to meet their specific needs.

With the principle of “Quality Parts,Customers Priority,Honest Operation,and Considerate Service”,our business mainly focus on the distribution of electronic components. Line cards we deal with include Microchip,ALPS,ROHM,Xilinx,Pulse,ON,Everlight and Freescale. Main products comprise IC,Modules,Potentiometer,IC Socket,Relay,Connector.Our parts cover such applications as commercial,industrial, and automotives areas.

We are looking forward to setting up business relationship with you and hope to provide you with the best service and solution. Let us make a better world for our industry!



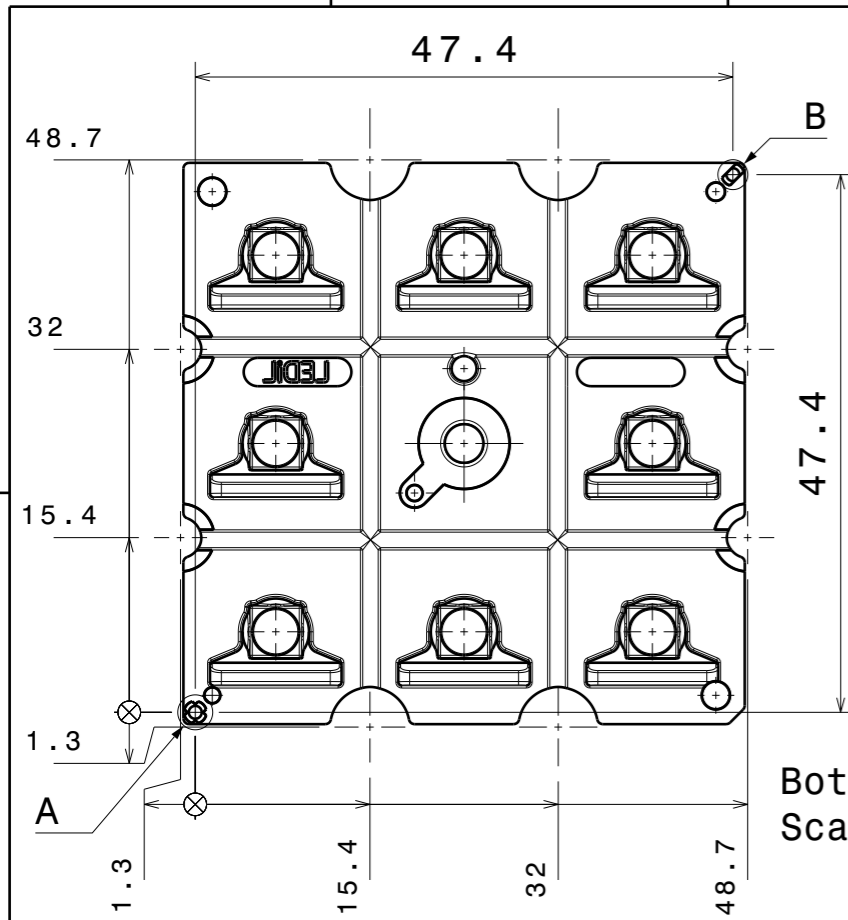
## Contact us

Tel: +86-755-8981 8866 Fax: +86-755-8427 6832

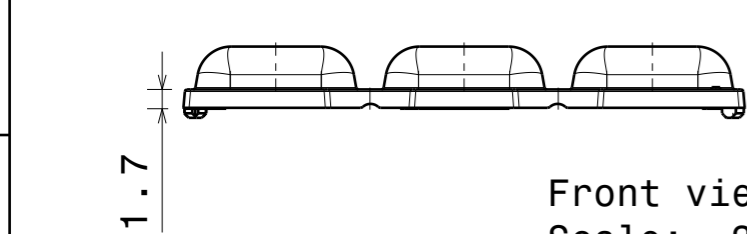
Email & Skype: info@chipsmall.com Web: www.chipsmall.com

Address: A1208, Overseas Decoration Building, #122 Zhenhua RD., Futian, Shenzhen, China

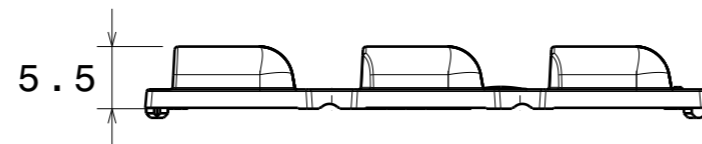




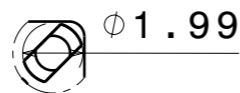
Bottom view  
Scale: 3:2



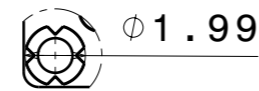
Front view  
Scale: 3:2



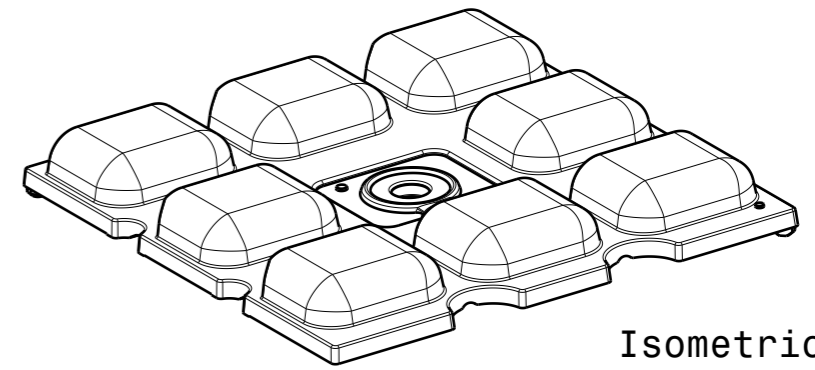
Left view  
Scale: 3:2



Detail B  
Scale: 4:1

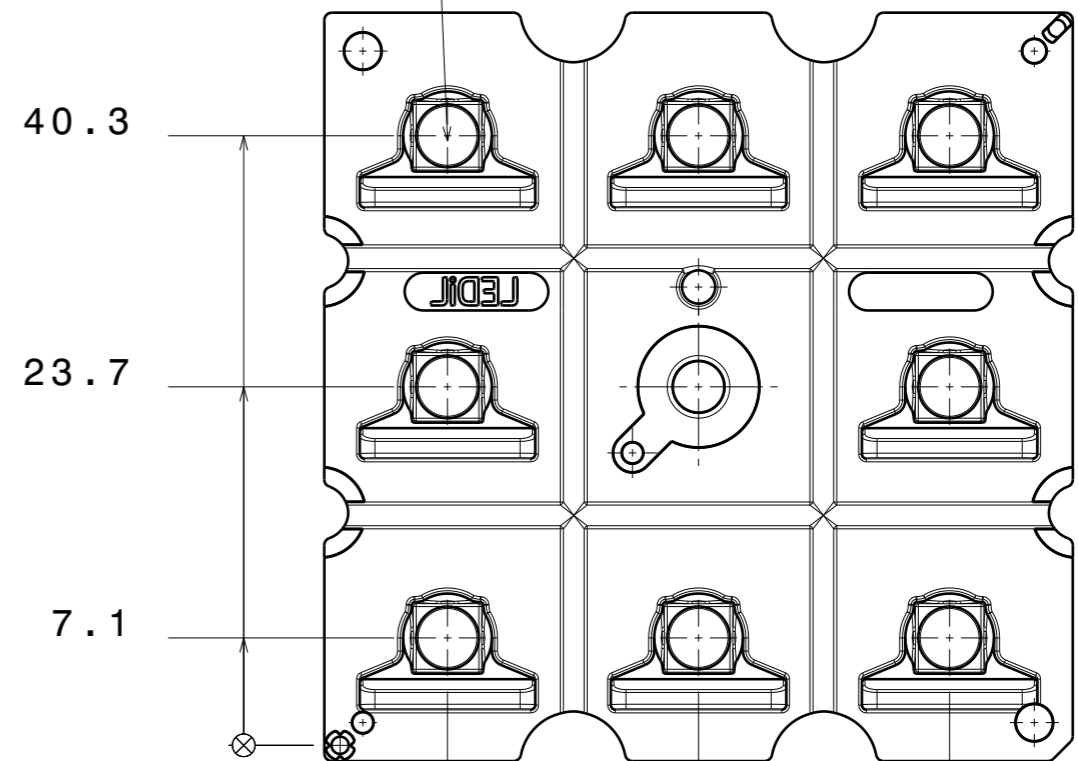


Detail A  
Scale: 4:1

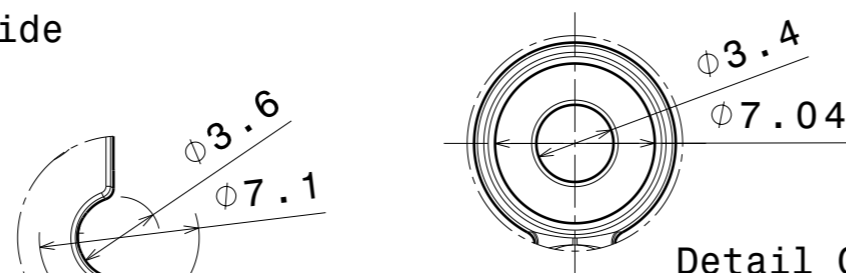


Isometric view  
Scale: 3:2

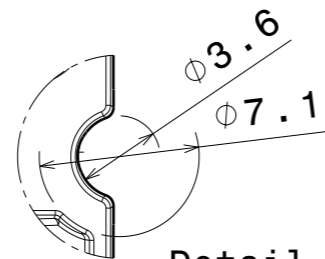
LED center



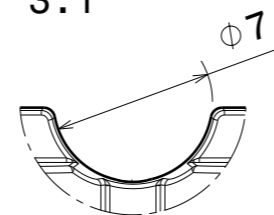
Bottom view  
Scale: 2:1



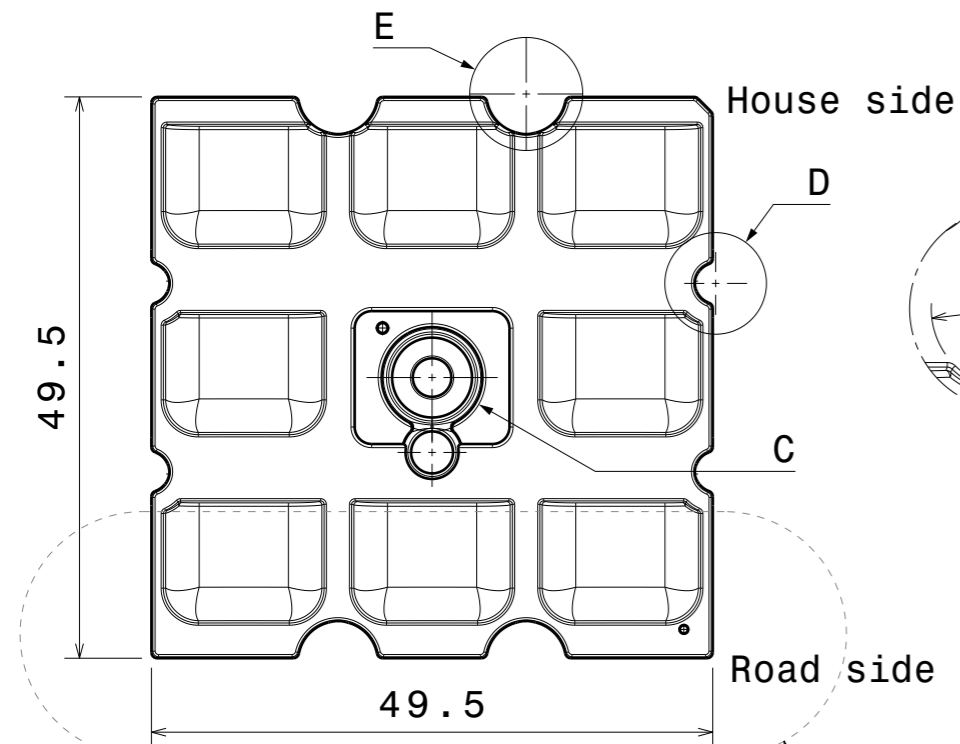
Detail C  
Scale: 3:1



Detail D  
Scale: 3:1



Detail E  
Scale: 3:1



Top view  
Scale: 3:2

Beam direction

PART NO	MATERIAL
C16226_STRADELLA-8-HV-ME	PMMA

Tolerances if not otherwise shown  
According to DIN ISO 2768-1  
Linear measures:  
Up to 30mm class F<sub>M</sub>, otherwise see class M.  
According to DIN ISO 2768-2  
Form and position: class K  
Control for SPC marked dimensions.

**LEDiL** LediL Oy  
Salorankatu 10  
FIN 24240 SALO  
Finland

FIRST ANGLE PROJECTION:

DRAWING TITLE  
**STRADELLA-8-HV-ME mechanical drawing**

This drawing is the property of LEDiL Oy. It may not be reproduced, copied or communicated without a written agreement with LEDiL Oy.

SIZE	PART NUMBER
A3	C16226

SCALE	3:2	WEIGHT	7,26 g	SHEET	1/1
-------	-----	--------	--------	-------	-----