



Chipsmall Limited consists of a professional team with an average of over 10 year of expertise in the distribution of electronic components. Based in Hongkong, we have already established firm and mutual-benefit business relationships with customers from,Europe,America and south Asia,supplying obsolete and hard-to-find components to meet their specific needs.

With the principle of "Quality Parts,Customers Priority,Honest Operation,and Considerate Service",our business mainly focus on the distribution of electronic components. Line cards we deal with include Microchip,ALPS,ROHM,Xilinx,Pulse,ON,Everlight and Freescale. Main products comprise IC,Modules,Potentiometer,IC Socket,Relay,Connector.Our parts cover such applications as commercial,industrial, and automotives areas.

We are looking forward to setting up business relationship with you and hope to provide you with the best service and solution. Let us make a better world for our industry!



## Contact us

Tel: +86-755-8981 8866 Fax: +86-755-8427 6832

Email & Skype: info@chipsmall.com Web: www.chipsmall.com

Address: A1208, Overseas Decoration Building, #122 Zhenhua RD., Futian, Shenzhen, China



# 1700 & 1750 Toggle Switches 16A 250Vac Single and Double Pole



- ▶ Nylon toggle switches
- ▶ Ratings up to 20A, 250V ac
- ▶ Single and double pole
- ▶ Wide choice of terminals
- ▶ Choice of circuit options including 3 position
- ▶ Flat & round actuator options

## Approvals and specifications



16(4)A 250Vac T85



UL 20A 250Vac Non Ind (Single pole)  
 UL 16A 250Vac Non Ind (Double pole)  
 UL CSA (2 pos types) 250Vac 1hp, 125Vac 1/2hp  
 UL CSA (3 pos types) 250Vac 1/2hp, 125Vac 1/4hp  
 CSA 16A 250Vac Non Ind  
 UL 85°C, file E45221, CSA file LR10990  
 UL and CSA N/A on momentary types

Selective "A, B, C" and "OFF, A, A+B" circuits at 5 amp also available.  
 3mm contact gap except where marked  $\mu$ .  
 Technical data on pages 4 & 5.

toggle switches

**C 1750 H O - - -**

TERMINAL FUNCTION ACTUATOR BODY OPTIONS

TERMINAL	FUNCTION		ACTUATOR
<b>C</b>  6.3 x 0.8	<b>Single pole</b>  <b>1700</b> ON - OFF	<b>Double pole</b>  <b>1750</b> ON - OFF	<b>H</b>  16.4
<b>H</b>  4.8 x 0.8	<b>1710 <math>\mu</math></b> ON - ON	<b>1760 <math>\mu</math></b> ON - ON	
<b>K</b>  2.0 2.8 x 0.8	<b>1720 <math>\mu</math></b> ON - OFF - ON	<b>1770 <math>\mu</math></b> ON - OFF - ON	<b>R</b>  13.8
<b>T</b>  7.0 2.1 Solder	<b>1721 <math>\mu</math></b> ON - OFF - ON (momentary 1 side)		
<b>X</b>  4.0 9.1 PCB 0.8 Sq	<b>1722 <math>\mu</math></b> ON - OFF - ON (momentary 2 sides)		The switch is on between centre terminals (2 & 5) and the terminals over which the lever is positioned.



C1700R --



C1700H --



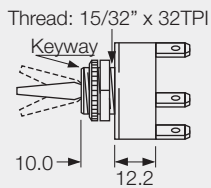
C1760R --



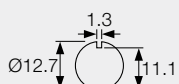
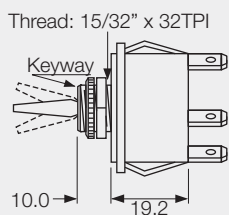
C1750H --

**BODY**

**0**  
Single pole



**0**  
Double pole



Panel hole (all types)  
Panel thickness (Max)  
Both nuts - 3.5mm  
Less backnut - 6.5mm

**OPTIONS**

**Neck Seal A0539M0AAA**

Material - Nitrile  
(H & R Actuators)  
Actuator visible



**Cover A1080M0AAA**

Material - EPDM  
(R Actuator only)



**Cover A0331M0AAA**

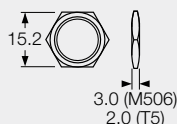
Material - PVC  
(R Actuator only)



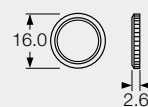
Covers have internal nylon nuts

**Fixing nuts** (Standard is M506 & T92)

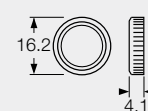
T5 Hex brass  
M506 Hex nylon



T92 Knurled brass - slotted



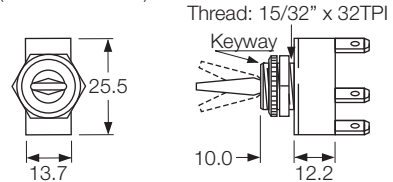
M279 Knurled nylon



**DIMENSIONS (mm)**

**Single Pole**

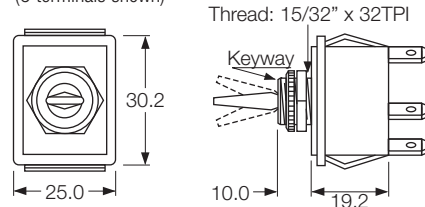
(C terminals shown)



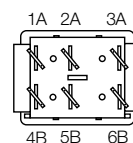
Optional  
F00232PAAA  
plate SP or DP

**Double Pole**

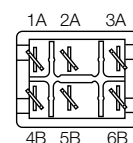
(C terminals shown)



Without barrier



With barrier



Optional terminal barrier M441.