



Chipsmall Limited consists of a professional team with an average of over 10 year of expertise in the distribution of electronic components. Based in Hongkong, we have already established firm and mutual-benefit business relationships with customers from,Europe,America and south Asia,supplying obsolete and hard-to-find components to meet their specific needs.

With the principle of “Quality Parts,Customers Priority,Honest Operation,and Considerate Service”,our business mainly focus on the distribution of electronic components. Line cards we deal with include Microchip,ALPS,ROHM,Xilinx,Pulse,ON,Everlight and Freescale. Main products comprise IC,Modules,Potentiometer,IC Socket,Relay,Connector.Our parts cover such applications as commercial,industrial, and automotives areas.

We are looking forward to setting up business relationship with you and hope to provide you with the best service and solution. Let us make a better world for our industry!



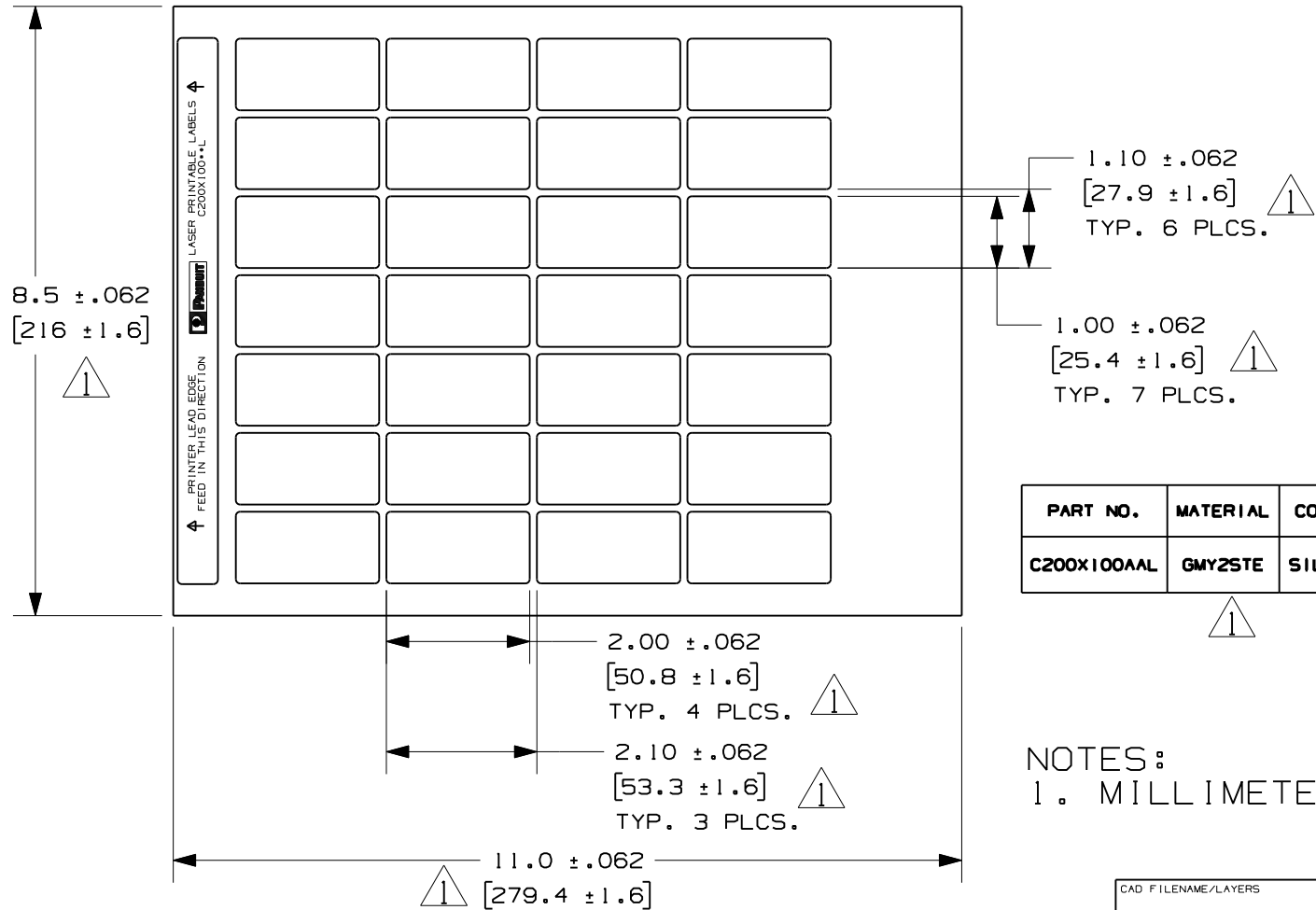
## Contact us

Tel: +86-755-8981 8866 Fax: +86-755-8427 6832

Email & Skype: [info@chipsmall.com](mailto:info@chipsmall.com) Web: [www.chipsmall.com](http://www.chipsmall.com)

Address: A1208, Overseas Decoration Building, #122 Zhenhua RD., Futian, Shenzhen, China





PART NO.	MATERIAL	COLOR	MARKER SIZE inches (mm)	LABELS PER SHEET	SHEETS PER PKG.	STANDARD PKG. QTY.
C200X100AAL	GMY2STE	SILVER	2.00 (50.8) X 1.00 (25.4)	28	36	1000

1

NOTES:  
1. MILLIMETER ARE IN [     ].

CAD FILENAME/LAYERS		100472LU-DC-C10534/02C	
PANDUIT		CORP. TINLEY PARK, ILLINOIS	
OPTIMUM C200X100AAL LASER PRINTABLE LABELS			
UNLESS OTHERWISE SPECIFIED, DIMENSIONAL TOLERANCES ARE: (.X) ± .12 (XXX) ± .025 (.XX) ± .062 ANGLES ±		UNLESS OTHERWISE SPECIFIED, ALL DIMENSIONS ARE GIVEN IN INCHES, THIRD ANGLE PROJECTION.	
DRAWN BY RVU		SCALE NTS	
DATE 10/27/06		SEE TABLE	
CHK'D		DRAWING NO. C10534	
		DWG A SIZE	

1	6/16/10	RVU		GMY2STE WAS GMY. ADD +/- .062.	6062	R				
0	10/27/06	RVU		DRAWING RELEASE.	4752	R				
REV	DATE	BY	CHK	DESCRIPTION	ECN	- R	CUST	SUP		