



Chipsmall Limited consists of a professional team with an average of over 10 year of expertise in the distribution of electronic components. Based in Hongkong, we have already established firm and mutual-benefit business relationships with customers from,Europe,America and south Asia,supplying obsolete and hard-to-find components to meet their specific needs.

With the principle of “Quality Parts,Customers Priority,Honest Operation,and Considerate Service”,our business mainly focus on the distribution of electronic components. Line cards we deal with include Microchip,ALPS,ROHM,Xilinx,Pulse,ON,Everlight and Freescale. Main products comprise IC,Modules,Potentiometer,IC Socket,Relay,Connector.Our parts cover such applications as commercial,industrial, and automotives areas.

We are looking forward to setting up business relationship with you and hope to provide you with the best service and solution. Let us make a better world for our industry!



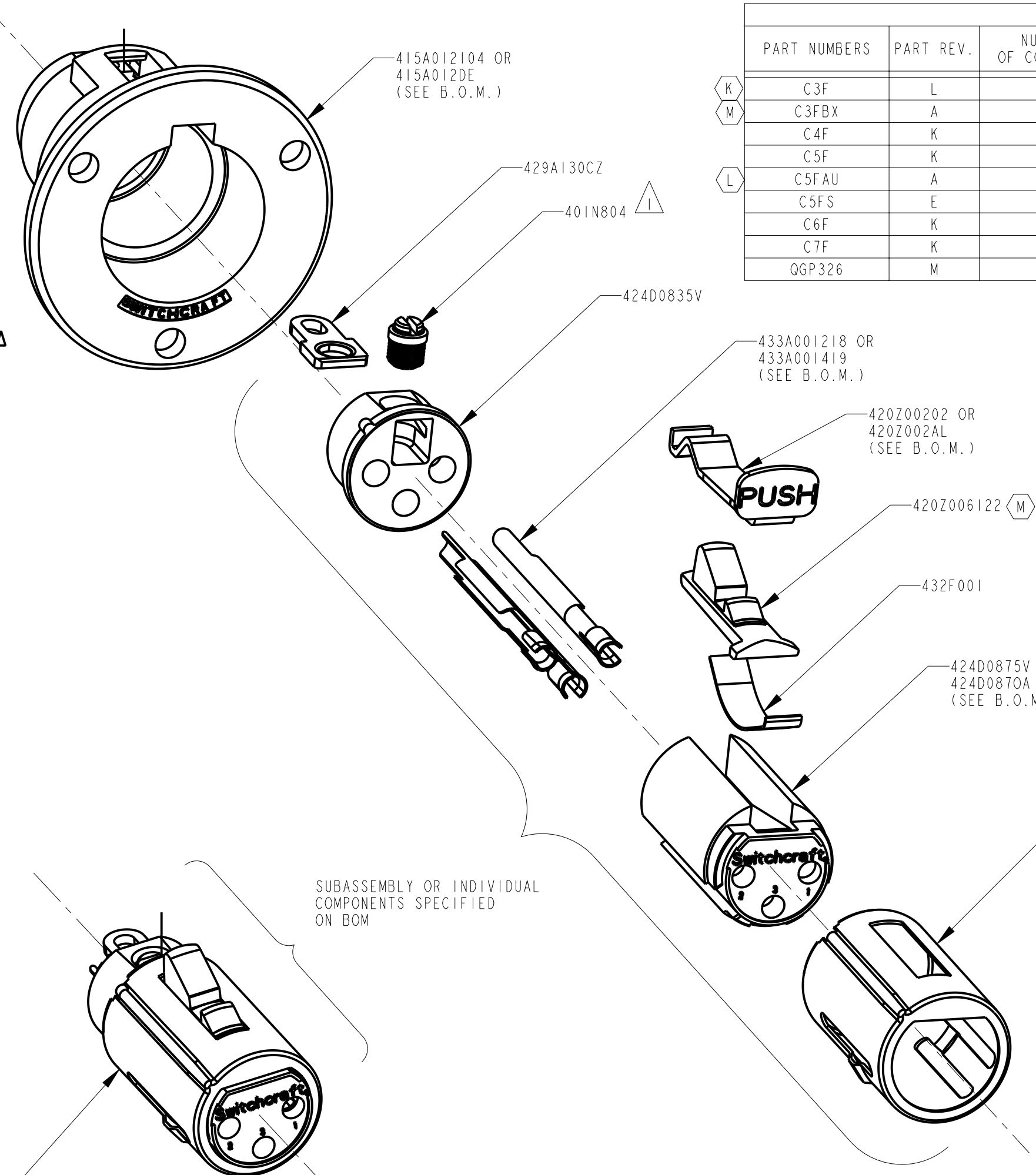
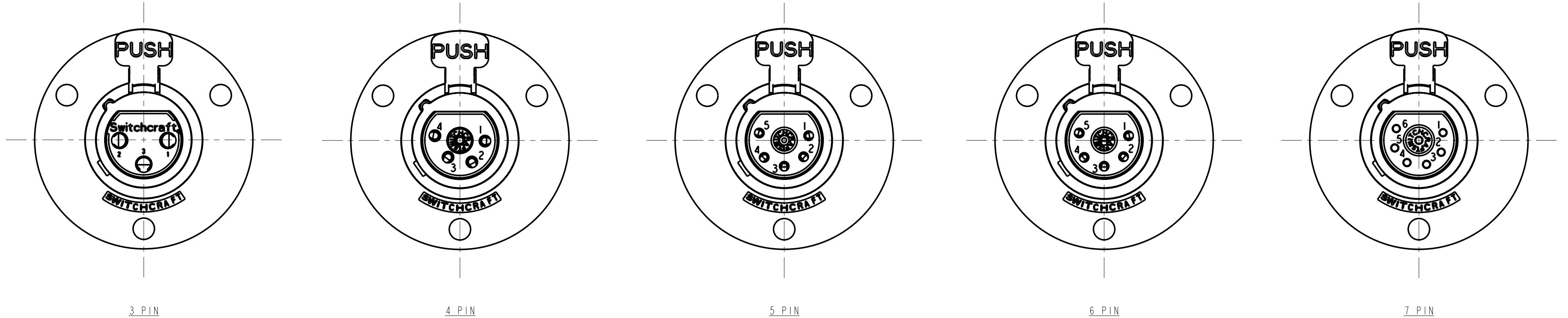
Contact us

Tel: +86-755-8981 8866 Fax: +86-755-8427 6832

Email & Skype: info@chipsmall.com Web: www.chipsmall.com

Address: A1208, Overseas Decoration Building, #122 Zhenhua RD., Futian, Shenzhen, China





STANDARD PART NUMBERS						
PART NUMBERS	PART REV.	NUMBER OF CONTACTS	CONTACT FINISH	HOUSING FINISH	INSULATOR FINISH	LATCH FINISH
K C3F	L	3	SILVER	NICKEL	GREEN	NICKEL
M C3FBX	A	3	SILVER	BLACK	BLACK	NICKEL
C4F	K	4	SILVER	NICKEL	GREEN	NICKEL
C5F	K	5	SILVER	NICKEL	GREEN	NICKEL
L C5FAU	A	5	GOLD	NICKEL	GREEN	NICKEL
C5FS	E	5	SILVER	NICKEL, SANDED	GREEN	NICKEL
C6F	K	6	SILVER	NICKEL	GREEN	NICKEL
C7F	K	7	SILVER	NICKEL	GREEN	NICKEL
QGP326	M	3	GOLD	CHROME	GREEN	NICKEL

- NOTES:
- BACK SCREW, (#401N804) OUT INTO HOUSING, (# 415A012104) TO ADJUST COMPLETELY. REMOVAL TORQUE OF SET SCREW 3 IN./LBS. MIN. RETROCEDA ESTA TORNILLO SER ADJUSTADO COMPLETAMENTE.
 - STAKE HOUSING, (# 415A287) OVER (# 424D0835V) USING STAKING TOOL PD-ST 1324. INSPECT FRONT AND REAR OF HOUSING WITH M-880 AFTER STAKING. 14 LBS MIN. INSERT PUSH-OUT FORCE.
 - THIS PRODUCT IS RoHS COMPLIANT

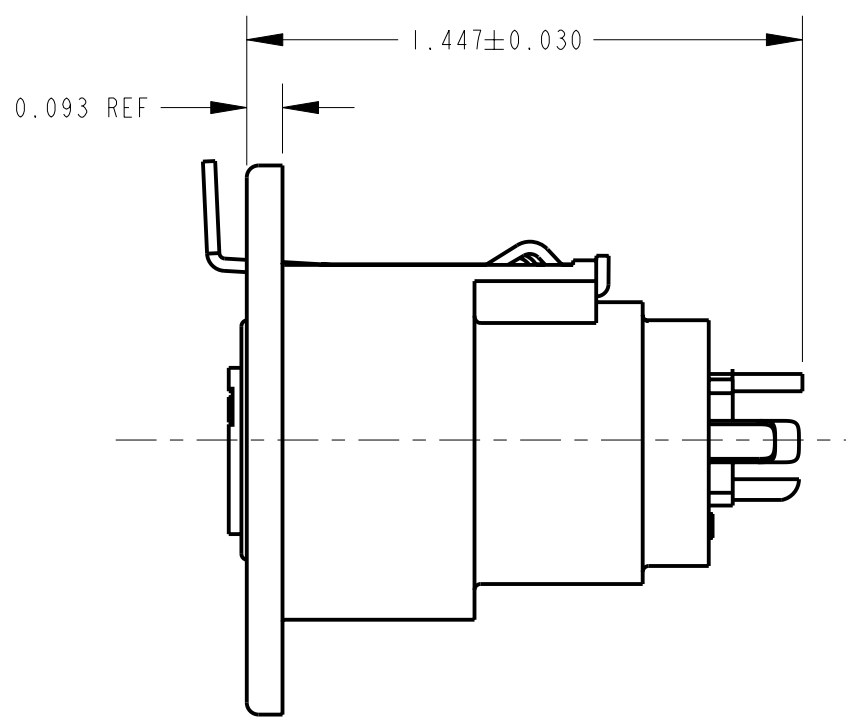
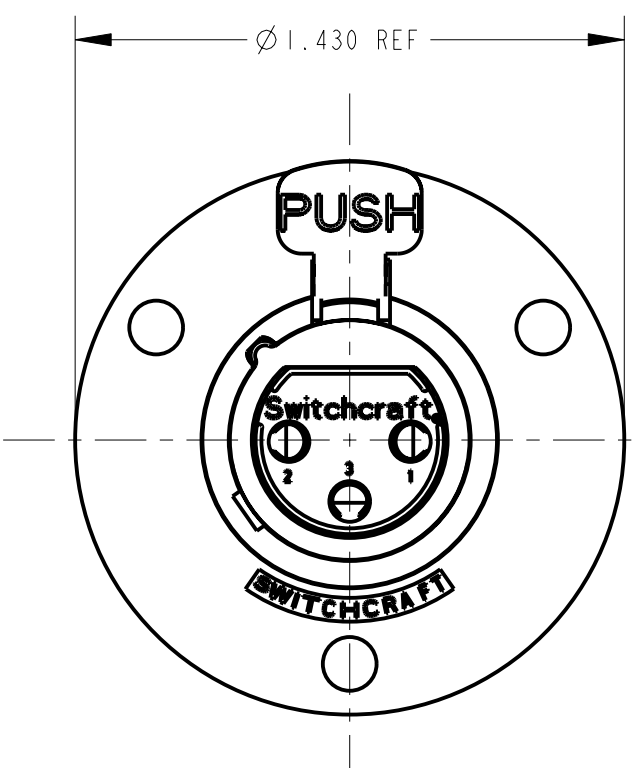


FIGURE: 2
SUBASSEMBLY VERSION

FIGURE: 1
INDIVIDUAL COMPONENTS VERSION

★ STAR SYMBOL DENOTES CRITICAL DIMENSION					THIS DRAWING DESCRIBES A DESIGN CONSIDERED PROPRIETARY IN NATURE, DEVELOPED AND MANUFACTURED BY SWITCHCRAFT INC. AND IS RELEASED ON A CONFIDENTIAL BASIS FOR IDENTIFICATION PURPOSES ONLY.				
UNLESS OTHERWISE SPECIFIED					SIZE	WIDTH	MULT	LBS/M	TEMPER
1. ALL DIMENSIONS IN INCHES - TWO PLACE DECIMALS ±0.01 - THREE PLACE DECIMALS ±0.005 - ANGLES ±1° - ALL DIA. CONCENTRIC WITHIN 0.005 T.I.R.					FINISH SPEC No.		MATERIAL SPEC No.		
2. FEATURES ON THE SAME CENTERLINE MUST BE ALIGNED WITHIN ±0.002					FIRST USED ON		SCALE 2:1		
3. REMOVE ALL BURRS					DATE DRAWN	BY	CHKD	APVD	Switchcraft®
DO NOT SCALE DRAWING					12-11-93	SG	7-12-94	7-12-94	
REVISIONS					NAME C SERIES FEMALE OG, RoHS				PART No. C_F SERIES
									REV M