



Chipsmall Limited consists of a professional team with an average of over 10 year of expertise in the distribution of electronic components. Based in Hongkong, we have already established firm and mutual-benefit business relationships with customers from,Europe,America and south Asia,supplying obsolete and hard-to-find components to meet their specific needs.

With the principle of “Quality Parts,Customers Priority,Honest Operation,and Considerate Service”,our business mainly focus on the distribution of electronic components. Line cards we deal with include Microchip,ALPS,ROHM,Xilinx,Pulse,ON,Everlight and Freescale. Main products comprise IC,Modules,Potentiometer,IC Socket,Relay,Connector.Our parts cover such applications as commercial,industrial, and automotives areas.

We are looking forward to setting up business relationship with you and hope to provide you with the best service and solution. Let us make a better world for our industry!



Contact us

Tel: +86-755-8981 8866 Fax: +86-755-8427 6832

Email & Skype: info@chipsmall.com Web: www.chipsmall.com

Address: A1208, Overseas Decoration Building, #122 Zhenhua RD., Futian, Shenzhen, China



C4K-Z4

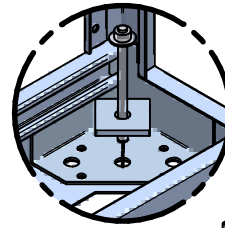
FOR C4/DC100/DCZ4/DRZ4 - SERIES

ASSEMBLY INSTRUCTIONS FOR SEISMIC (EARTHQUAKE) LOADING

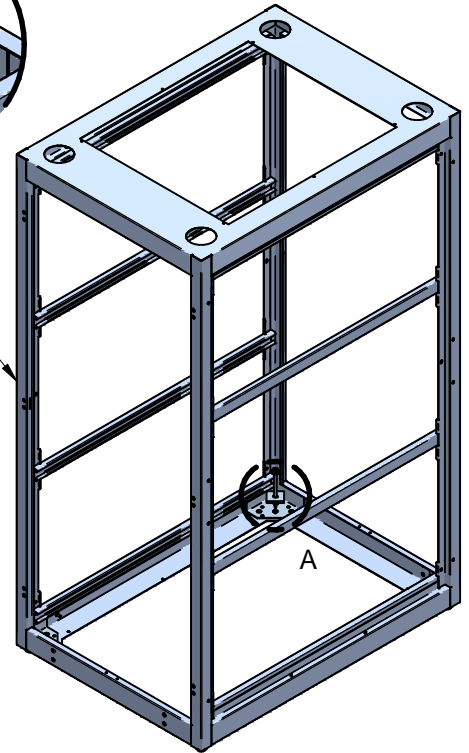
BUL10327
REV.F
PAGE 1 OF 1

Floor Mounting (Required for Zone 4 Compliance)

The cabinet must be anchored to the floor at each corner using the hardware supplied (C4K-Z4), **casters must be removed**. Drill (4) 3/8" holes minimum 3.88" deep and set anchor bolts with a 3.50" embedment at required locations.

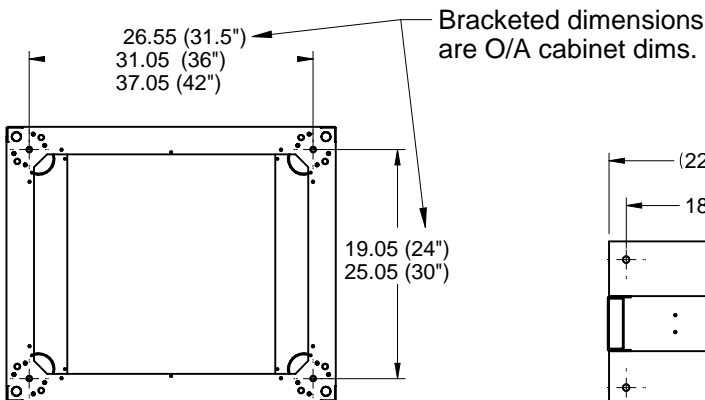


DETAIL A

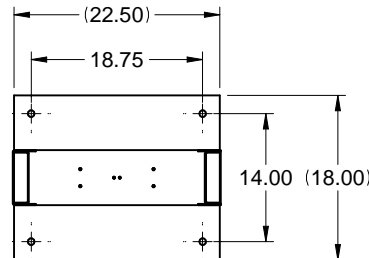


Recommended Anchor Bolt Location

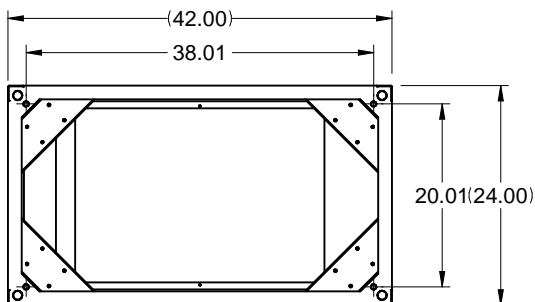
USE CABINET FRAME AS TEMPLATE



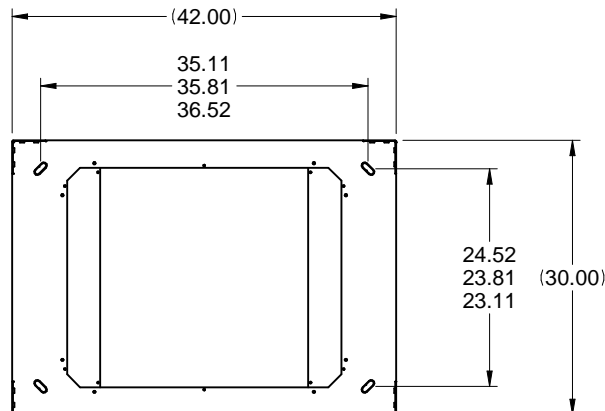
BOTTOM VIEW OF C4 CABINET



BOTTOM VIEW OF DRZ4



BOTTOM VIEW OF DC100 CABINET



BOTTOM VIEW OF DCZ4 CABINET

The seismic loading of the C4 & DC100 cabinet series was determined in accordance with the International Building Code 2012 (IBC 2012) and ASCE 7-10 for Seismic Zones.

The C4 and DC100 cabinet series was found structurally adequate to safely resist Seismic (earthquake) loads when supporting 1,000 lb of equipment evenly distributed.

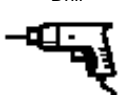
The center of mass of the equipment must be no higher than the mid-height of the cabinet frame.

The DCZ4/DRZ4 were independently tested and certified to exceed established Seismic Zone 4 Telcordia® GR-63-CORE testing standards. Dynamic (seismic) suggested load capacity of 1,000 lb. (453.6 kg) of equipment installed and 100 lb. (45.4 kg) of simulated cable weight on top for the DCZ4 cabinet and suggested load capacity of 800 lb. (362.9 kg) of equipment installed and 50 lb. (22.7 kg) of simulated cable weight on top for the DRZ4 2 post rack when secured using C4K-Z4 seismic bolt down kit.

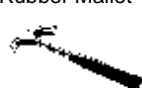
TOOL BOX



Drill



Rubber Mallet



Socket Set



visit our website @ www.hammondmfg.com