



Chipsmall Limited consists of a professional team with an average of over 10 year of expertise in the distribution of electronic components. Based in Hongkong, we have already established firm and mutual-benefit business relationships with customers from,Europe,America and south Asia,supplying obsolete and hard-to-find components to meet their specific needs.

With the principle of “Quality Parts,Customers Priority,Honest Operation,and Considerate Service”,our business mainly focus on the distribution of electronic components. Line cards we deal with include Microchip,ALPS,ROHM,Xilinx,Pulse,ON,Everlight and Freescale. Main products comprise IC,Modules,Potentiometer,IC Socket,Relay,Connector.Our parts cover such applications as commercial,industrial, and automotives areas.

We are looking forward to setting up business relationship with you and hope to provide you with the best service and solution. Let us make a better world for our industry!



Contact us

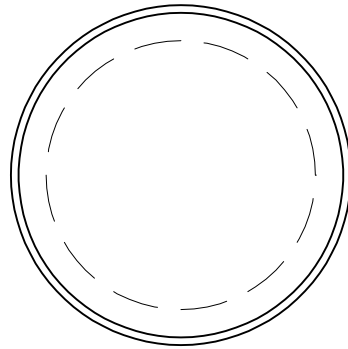
Tel: +86-755-8981 8866 Fax: +86-755-8427 6832

Email & Skype: info@chipsmall.com Web: www.chipsmall.com

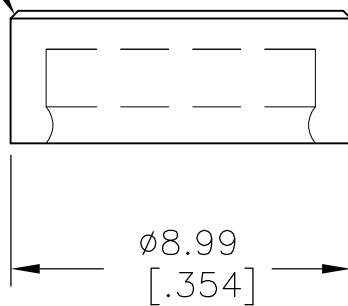
Address: A1208, Overseas Decoration Building, #122 Zhenhua RD., Futian, Shenzhen, China



LOC	DIST	REVISIONS					
—	—	P	LTR	DESCRIPTION	DATE	DWN	APVD
			A	ECO-09-022134	01OCT09	HMR	MW



.008 X 45°
CHAMFER



WHITE	C99	7-1437627-4
RED	C92	7-1437627-2
BLACK	C90	7-1437627-1
COLOR	ALCO PART NO	PART NO

THIS DRAWING IS UNPUBLISHED.

RELEASED FOR PUBLICATION
ALL INTERNATIONAL RIGHTS RESERVED.

BY TYCO ELECTRONICS CORPORATION.

© COPYRIGHT

DIMENSIONS: mm [INCHES]	DWN RAGHAVENDRA	01OCT09	MATERIAL ABS PLASTIC	FINISH —		
	CHK M WILBOURN	01OCT09	Tyco Electronics Corporation Harrisburg, PA 17105-3608			
TOLERANCES UNLESS OTHERWISE SPECIFIED:	APVD M WILBOURN	01OCT09			NAME Cap, C9*	
	0 PLC ± -	PRODUCT SPEC	SIZE A4	CAGE CODE 00779	DRAWING NO C-7-1437627-1	RESTRICTED TO —
1 PLC ± -	APPLICATION SPEC	WEIGHT —	SCALE 5:1		SHEET 1 OF 1	REV A
2 PLC ± -		CUSTOMER DRAWING				
3 PLC ± -						
4 PLC ± -						
ANGLES ± -						

