



Chipsmall Limited consists of a professional team with an average of over 10 year of expertise in the distribution of electronic components. Based in Hongkong, we have already established firm and mutual-benefit business relationships with customers from,Europe,America and south Asia,supplying obsolete and hard-to-find components to meet their specific needs.

With the principle of “Quality Parts,Customers Priority,Honest Operation,and Considerate Service”,our business mainly focus on the distribution of electronic components. Line cards we deal with include Microchip,ALPS,ROHM,Xilinx,Pulse,ON,Everlight and Freescale. Main products comprise IC,Modules,Potentiometer,IC Socket,Relay,Connector.Our parts cover such applications as commercial,industrial, and automotives areas.

We are looking forward to setting up business relationship with you and hope to provide you with the best service and solution. Let us make a better world for our industry!



## Contact us

Tel: +86-755-8981 8866 Fax: +86-755-8427 6832

Email & Skype: info@chipsmall.com Web: www.chipsmall.com

Address: A1208, Overseas Decoration Building, #122 Zhenhua RD., Futian, Shenzhen, China



The Keil Cx51 ANSI C Compiler supports all classic and extended 8051 device variants. Compiler extensions provide full access to all CPU resources and support up to 16MB memory. The Keil Cx51 generates code with the efficiency and speed of hand-optimized assembly. New compiler and linker optimizations shrink programs into the smallest single-chip devices.

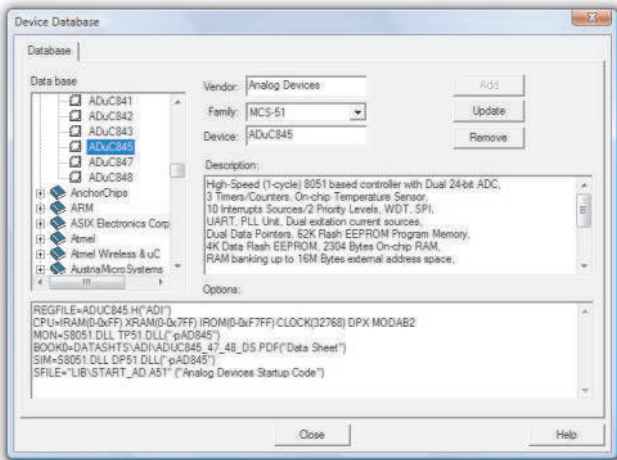
The Keil µVision4 IDE fully integrates Cx51 Version 9 and provides control of the Compiler, Assembler, Real-Time OS, Project Manager, and Debugger in a single, intelligent environment. With support for all 8051 devices and full compatibility with emulators and third-party tools, Keil Cx51 is clearly the best choice for your 8051 project.

**Supports all 8051 Variants  
Up to 16MB Memory**

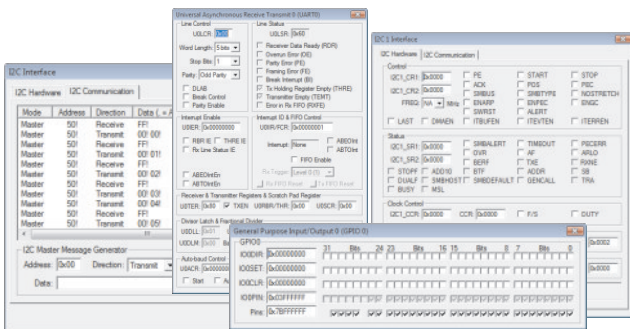
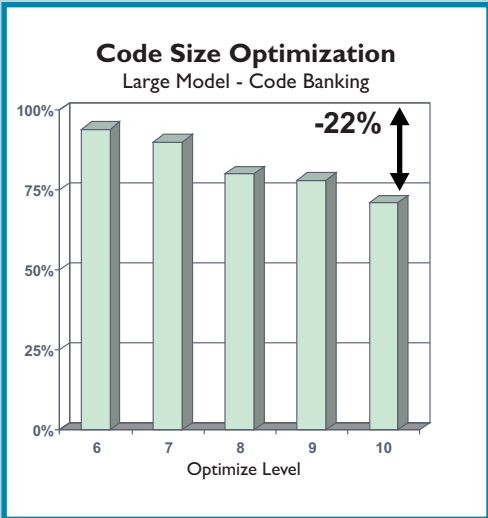
**Easy-to-use IDE Supports  
Complete Development Cycle**

**Complete Device Support  
Including Peripheral Simulation**

**Drivers for Flexible Debugging  
in Target Hardware**



To start your project, just select the device from the µVision Device Database.



For the selected device, µVision Debugger provides dialogs with detailed peripheral information that are available with simulation and target debugging.

Keil Cx51 is the unsurpassed industry standard 8051 C Compiler. 10 optimization levels give you the ability to put more features into less memory space and provide the utmost code density for cost-sensitive single-chip designs.

Using level 10 with the LX51 Extended Linker optimizes a complete application. LX51 creates sub-routines for common code blocks and replaces LJMP/LCALL instructions with shorter AJMP/ACALL instructions wherever possible.

# Cx51



## Cx51 Compiler

The Keil 8051 and 251 development kits contain different C Compilers for optimum support of device variants. Cx51 is used as a generic term for:

- C51 Compiler for classic 8051 devices, 8051 IP cores, Dallas Contiguous Mode, and other extended devices
- CX51 Compiler for Philips 8051 MX and SmartMX
- C251 Compiler for 251 devices and 251 IP cores

The Cx51 Compiler gives complete access to all hardware components within your C source code. For example, you can control peripherals using SFR registers, write optimum interrupt code with CPU register banks, accelerate variable access with the *data*, *idata*, or *pdata* memory type, and use efficient bit operations or atomic bit manipulation.

8051 devices provide various physical memory spaces: fast DATA space, up to 16MB large XDATA space, and CODE space for constants. For flexible memory usage, Cx51 offers:

- Three well-defined memory models that provide the default memory allocation for variables
- Generic pointers that access all memory spaces
- Memory types that control the space for variables or pointer accesses. Memory-specific pointers reduce RAM requirements, and optimize program execution

## LX51 Extended Linker

The standard Code Banking Linker lets you increase the program space of a classic 8051 device beyond 64KB. The LX51 Extended Linker expands device support and adds further functionality to the Keil Cx51 Compiler:

- **Linker Code Packing** analyzes an entire application and generates sub-routines for common code blocks even on code banking applications. Short AJMP and ACALL instructions replace longer LJMP and LCALL when possible
- **Incremental Linkage** allows you to split programs into several functional parts as it is required for multi-application programming or FLASH ROM updates
- **Far Memory Support** gives you access to 16MB of variable space even on a classic 8051 device and the far memory type may be used for special memory types
- Detailed **Data Type Checking** is performed across all public symbol definitions and improves software quality

## Cx51 Compiler Highlights

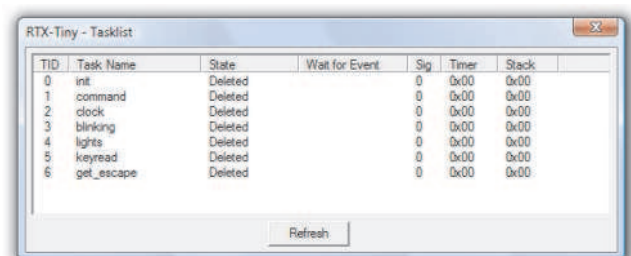
- Support for all 8051 derivatives and variants
- Fast 32-bit IEEE floating-point math
- Efficient interrupt code and direct register bank control
- Bit-addressable objects
- Sophisticated syntax checking and detailed warnings
- Use of AJMP and ACALL instructions
- Memory banking for code and variables beyond 64KB
- Register parameters and dynamic register variables
- Global program-wide register optimization
- Common code block sub-routine optimization
- Use of multiple data pointers
- Use of on-chip arithmetic units
- Generic and memory-specific pointers
- Re-entrant functions and register bank independent code
- Extensive debug and source browse information
- Simple assembly language interface

## RTX Tiny2 Real-Time Kernel

The RTX Tiny2 multi-tasking real-time kernel makes implementing complex, time-critical software projects easy. RTX Tiny2 is royalty-free and is fully integrated into the Keil Cx51 tool chain. It works on all classic 8051 device variants, and supports multiple DPTR and arithmetic units.

RTX Tiny2 is the successor of the popular RTX operating system and provides:

- Single chip and code banking support
- Round robin and cooperative task switching
- Task management with create and delete
- Timeout, Signal, and Ready events for task switching
- Interrupt support for sending signals to tasks



The  $\mu$ Vision debugger includes a kernel-aware dialog for RTX Tiny2 that displays complete information about all the tasks in your program.





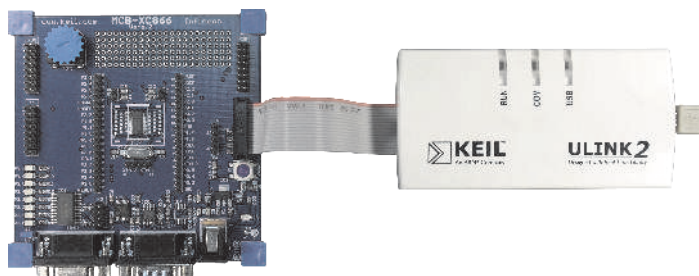
The **Keil PK51 Professional Developer's Kit** is a complete software development environment for classic and extended 8051 microcontrollers. It includes the tools you need to create, translate, and debug C and Assembly source files. Keil PK51 is easy to learn and use, yet powerful enough for the most demanding 8051 applications.

The integrated Device Database<sup>®</sup> configures the tools options for each specific microcontroller. For a complete list of supported devices, refer to [www.keil.com/dd](http://www.keil.com/dd).

Keil µVision combines project management, source editing, program debugging, and accurate device simulation in a single powerful environment. Multiple drivers are included for debugging applications running on target hardware.

- **Monitor-51** for evaluation boards and target hardware
- **MON390** for devices running in Dallas contiguous mode
- **ISD51** in-system debugger runs on standard 8051 hardware and is linked with the user application
- **EPM900** emulator/programmer for Philips LPC900 device series
- **FlashMON** for Atmel single-chip microcontrollers
- **MONADI** for Analog Devices MicroConverter
- **ULINK2** driver for Infineon XC800, NXP 952/954, and STMicroelectronics µPSD3000 devices

*Other target hardware is supported by third-party drivers.*



*The Keil ULINK2 Debug Adapter connects to a wide range of evaluation boards. For more information refer to [www.keil.com/ulink](http://www.keil.com/ulink)*

**Europe:** +49 89/45 60 40 - 20

[sales.intl@keil.com](mailto:sales.intl@keil.com)

[support.intl@keil.com](mailto:support.intl@keil.com)

**United States:**

+1 800 348 8051

[sales.us@keil.com](mailto:sales.us@keil.com)

[support.us@keil.com](mailto:support.us@keil.com)



All brand names or product names are the property of their respective holders. Neither the whole nor any part of the information contained in, or the product described in, this document may be adapted or reproduced in any material form except with the prior written permission of the copyright holder. The product described in this document is subject to continuous developments and improvements. All particulars of the product and its use contained in this document are given in good faith. All warranties implied or expressed, including but not limited to implied warranties of satisfactory quality or fitness for purpose are excluded. This document is intended only to provide information to the reader about the product. To the extent permitted by local laws ARM shall not be liable for any loss or damage arising from the use of any information in this document or any error or omission in such information.

**Program examples and detailed technical information are available from your distributor and our web site ([www.keil.com](http://www.keil.com)).**